

LENTOR  GARDENS
RESIDENCES

鑫 丰 伦 多 花 园

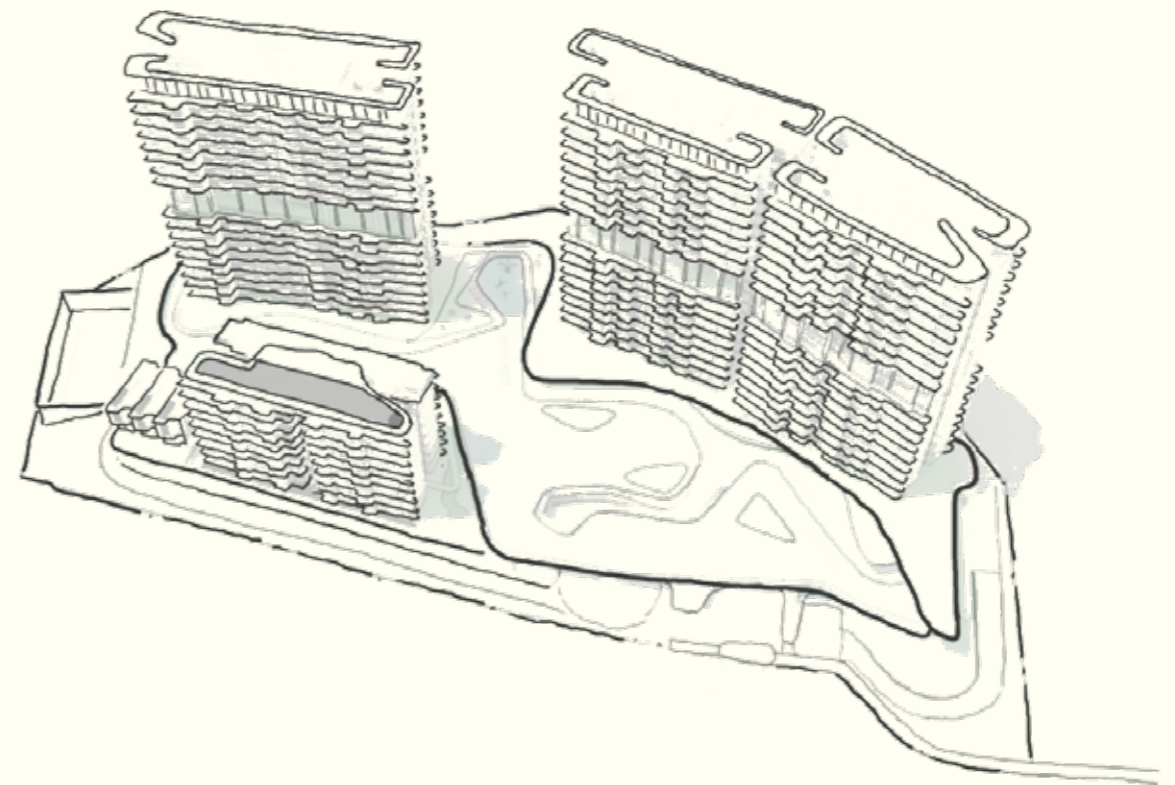


Artist's Impression

ELEVATED LIVING, LUSH HORIZONS

ELEVATED LIVING AMID NATURE

Set on the grounds of elevated terrain within Lantor Hills, Lantor Gardens Residences is thoughtfully designed to blend with its natural surroundings. Framed by open skies and lush greenery, the development offers homes that stay intimately connected with nature.



Artist's Impression

A NEW RESIDENTIAL LANDMARK AT LENTOR

At the heart of the Lentor estate, Lentor Gardens Residences offers 499 residential units across three 16-storey and one 8-storey tower blocks, as well as three exclusive Strata Terrace units. Complementing the extensive residential offering is a comprehensive suite of lifestyle facilities.



AN EMBLEM OF STYLE AND UTILITY



MASSAGE POOL, HYDRO MASSAGE SEAT,
50M LAP POOL

Lower Seletar Reservoir

Hillock Park

Lentor MRT Station

Yio Chu Kang Sport Centre

Presbyterian High School

Mayflower Primary School

Mayflower Market & Food Centre

Upper Peirce Reservoir Park

Nanyang Polytechnic

Anderson Serangoon Junior College

MacRitchie Reservoir

CHIJ St Nicholas Girls' School

Ang Mo Kio 628 Market

Junction 8

Windsor Nature Park

Thomson Nature Park

AMK Hub

Bishan-Ang Mo Kio Park

Thomson Plaza

Lower Peirce Reservoir Park



CONNECTED TO URBAN AND NATURAL AMENITIES

Conveniently close to lush green spaces and a wide array of urban amenities — including educational institutions, transport infrastructure, and shopping and dining destinations — residents of Lentor Gardens Residences can enjoy vibrant lifestyle choices alongside the rustic charm of nature.



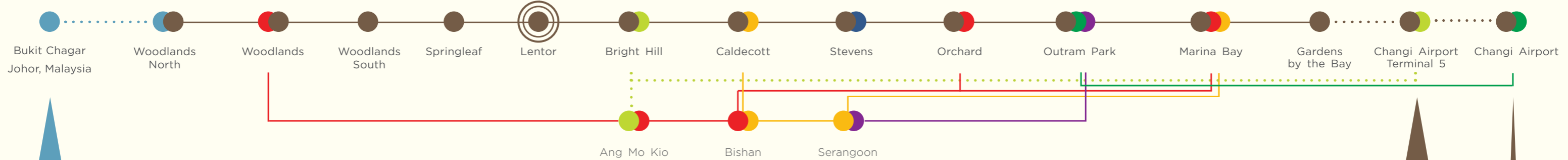
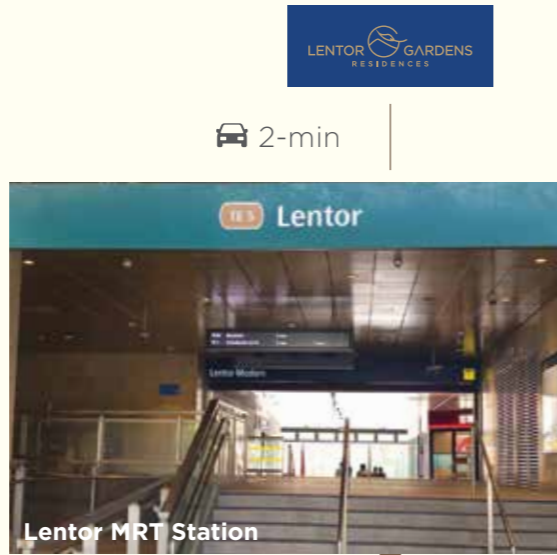
CONNECTED ACROSS THE ISLAND AND BEYOND BORDERS



Singapore's northern region is emerging as a key growth hub, anchored by the North Coast Innovation Corridor.



The North-South Corridor (NSC) will enhance connectivity from the northern region to the city.



Johor Bahru-Singapore Rapid Transit System Link (RTS Link) with Direct Connection to Thomson-East Coast Line (TEL)



The Johor Bahru-Singapore RTS will enhance cross-border connectivity, providing a direct rail link between Johor Bahru and Singapore. With integration into Singapore's MRT network, via the Thomson-East Coast Line, the RTS Link supports convenient travel for work, leisure, or everyday needs in Malaysia.



Thomson-East Coast Line (TEL) to be extended to serve Changi Airport Terminal 5

The TEL will soon offer Lentor residents a direct MRT connection to Changi Airport Terminal 5. This seamless route will link the estate to Singapore's upcoming terminal without transfers.



MRT Legend

- Thomson-East Coast Line
- East-West Line
- North East Line
- Circle Line
- North-South Line
- Downtown Line

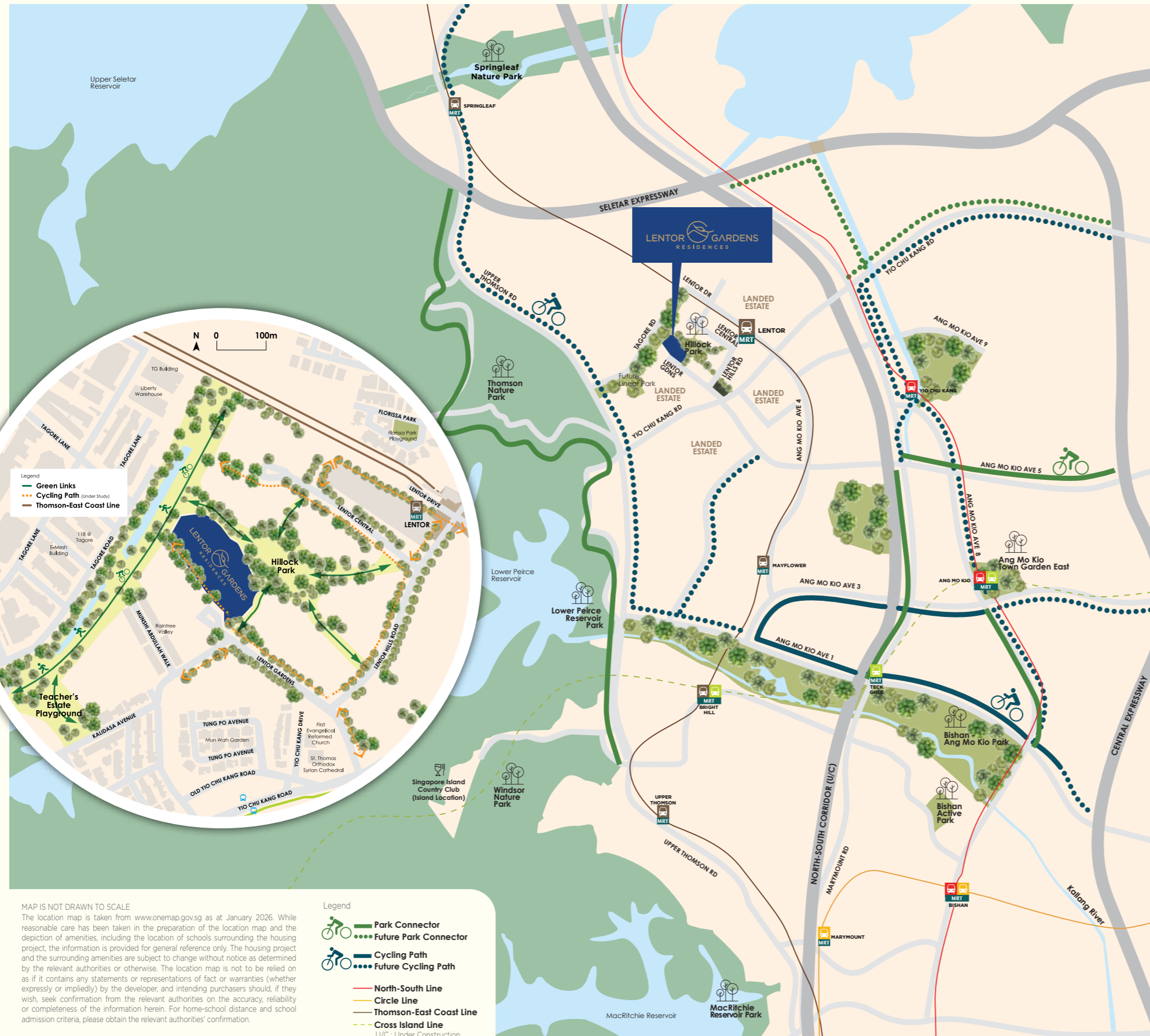
Under Construction

- RTS Link
- Cross Island Line
- Thomson-East Coast Line

Estimated travel times are based on average conditions and may vary depending on traffic and other factors.

RESIDE CLOSE TO GREEN SPACES

Lentor Gardens Residences is seamlessly connected to park connectors and well-linked to the upcoming North-South Corridor — an integrated expressway featuring dedicated cycling and pedestrian routes. From daily commutes to weekend rides, movement across the island becomes faster and greener.



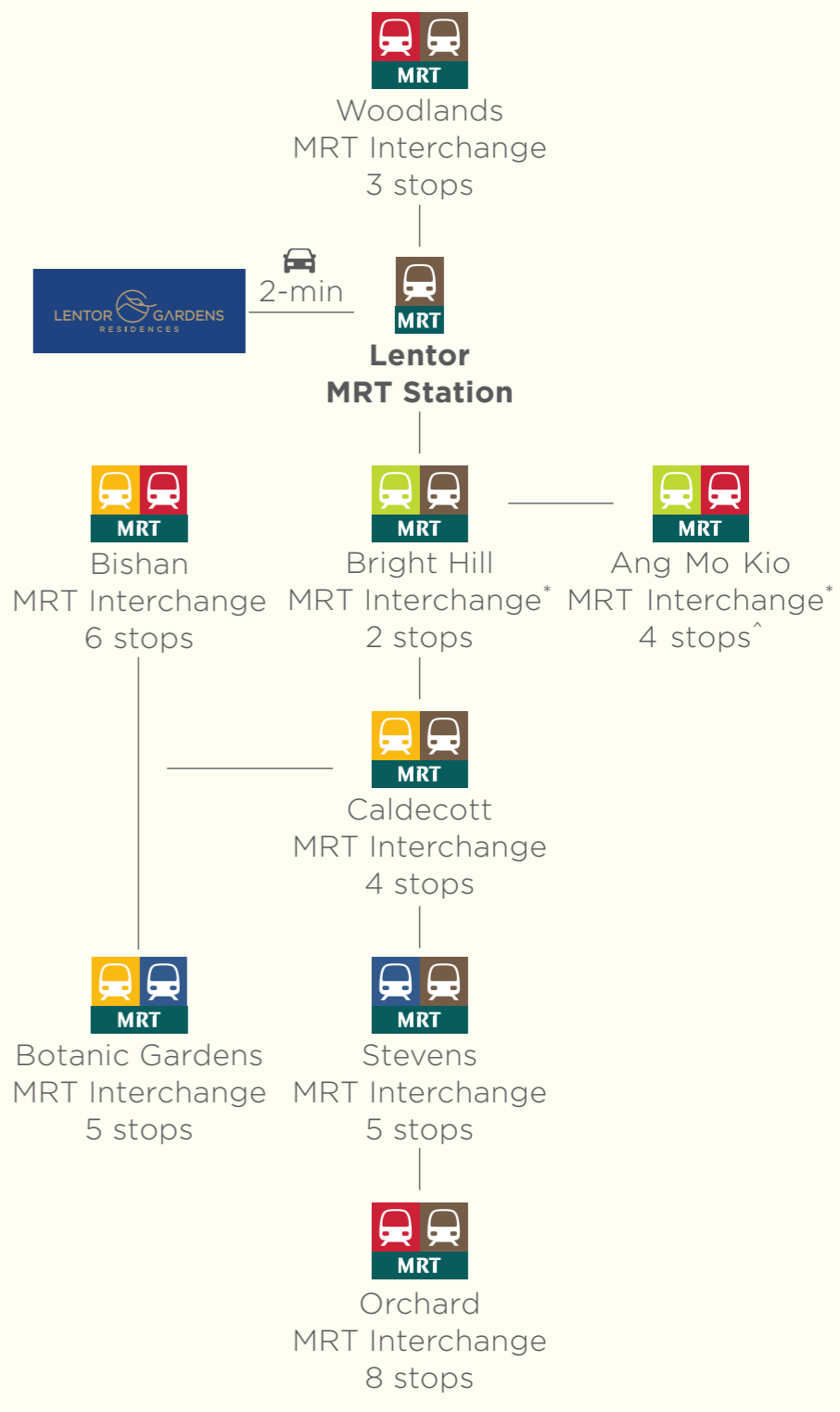
Nature Parks	Direct Access	
	Car	Bike
Hillock Park		
Thomson Nature Park	5-min	8-min
Bishan-Ang Mo Kio Park	6-min	8-min
Lower Peirce Reservoir Park	7-min	6-min
Windsor Nature Park	8-min	12-min
Upper Peirce Reservoir Park	11-min	10-min
Springleaf Nature Park	11-min	17-min
Lower Seletar Reservoir Park	11-min	17-min
Mandai Wildlife Reserve	16-min	40-min
Singapore Botanic Gardens	18-min	40-min

Estimated travel times are based on average conditions and may vary depending on traffic and other factors.

LENTOR GARDENS RESIDENCES



SEAMLESSLY CONNECTED ISLANDWIDE



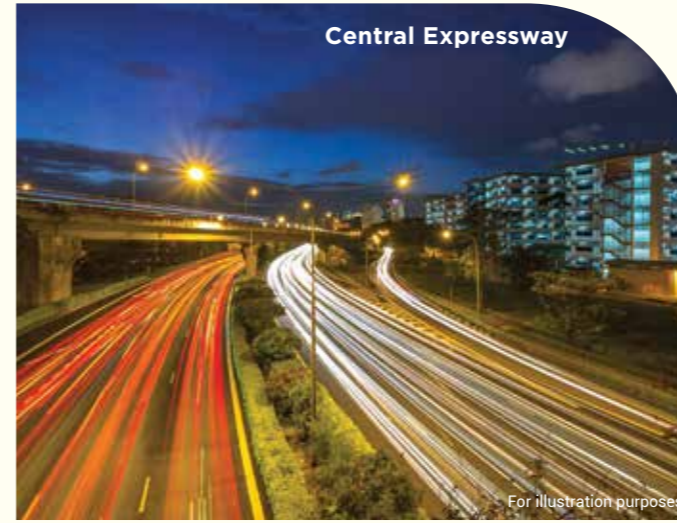
MAP IS NOT DRAWN TO SCALE
 The location map is taken from www.onemap.gov.sg as at January 2026. While reasonable care has been taken in the preparation of the location map and the depiction of amenities, including the location of schools surrounding the housing project, the information is provided for general reference only. The housing project and the surrounding amenities are subject to change without notice as determined by the relevant authorities or otherwise. The location map is not to be relied on as if it contains any statements or representations of fact or warranties (whether expressly or impliedly) by the developer, and intending purchasers should, if they wish, seek confirmation from the relevant authorities on the accuracy, reliability or completeness of the information herein. For home-school distance and school admission criteria, please obtain the relevant authorities' confirmation.

MRT Legend
 — North-South Line
 — Circle Line
 — Downtown Line
 — Thomson-East Coast Line
 U/C : Under Construction
 - - - Cross Island Line

*CRL components are under construction.
 *Based on future connectivity via the Cross Island Line (CRL).
 Walking distances and times are approximate and may vary according to individual pace and route taken.

EVERYWHERE WITHIN EASY REACH


Conveniently close to lush green spaces and a wide array of urban amenities — including educational institutions, transport links, and shopping and dining destinations — Lentor Gardens Residences offers residents vibrant lifestyle choices alongside the rustic charm of nature.



Expressways

North-South Corridor (U/C)



 2-min

Central Expressway

7-min

Seletar Expressway

7-min


Education

Lentor Gardens Residences Childcare



 Direct Access

Lentor Modern Childcare

 3-min

CHIJ St Nicholas Girls' School

6-min

Mayflower Secondary School

7-min

Anderson Primary School

8-min

Ang Mo Kio Primary School

8-min

Presbyterian High School

8-min

Nanyang Polytechnic

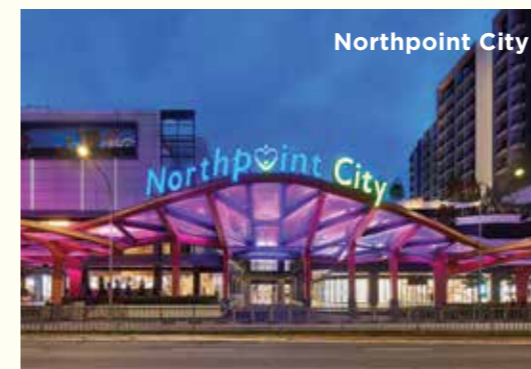
8-min

Anderson Secondary School

9-min

Anderson Serangoon Junior College


9-min



Dining / Shopping



Lentor Modern Mall

 2-min


Sembawang Hills Food Centre

5-min


Ang Mo Kio 628 Market

6-min

Springleaf Eateries

 6-min
(1 MRT stop)

Mayflower Market & Food Centre

 7-min

AMK Hub

9-min


Thomson Plaza & Upper Thomson Eateries

 9-min
(3 MRT stops)

Causeway Point

10-min
(3 MRT stops)

JTC Aerospace @ Seletar Aerospace Park

 11-min

Seletar Aerospace Park

12-min

Junction 8

14-min

Northpoint City

17-min

Novena Square and Square 2

18-min

United Square

18-min

U/C : Under Construction
Estimated travel times are based on average conditions and may vary depending on traffic and other factors.

EVERY DAY IS JUST AS WELCOMING

Every day is just as welcoming, beginning with a stately drop-off that ushers you into a luxurious suite of lifestyle facilities spanning from the first storey to the Sky Terraces above — taking life to the top.



**DROP-OFF & EARLY CHILDHOOD
DEVELOPMENT CENTRE**



75M SKYLINE, HYDROJET POOL,
RIPPLE BOARDWALK

Artist's Impression

A CURATED COLLECTION OF POOLS

A thoughtfully curated collection of pools and water features for relaxation, wellness, and exercise. From tranquil lagoons to skyline lap pools, every space invites residents to unwind, recharge, and enjoy moments together.



GYM

Artist's Impression



For illustration purposes



75M SKYLINE

Artist's Impression

LIMITED-EDITION STRATA TERRACES BY THE 75 METRE POOL

The three covetable Terraces offer the charm of landed living with the comforts of a condominium. Flanked by the 75-metre pool and surrounded by lush greenery, these exclusive homes enjoy enhanced privacy and a tranquil, resort-like setting. Combining generous space with the assurance of gated security, these rare residences present a truly exceptional lifestyle.



50M LAP POOL, HYDRO MASSAGE SEAT
& MASSAGE POOL

Artist's Impression

SWEEPING VIEWS FROM SKY TERRACES

Unwind at the pool deck with expansive park vistas, or savour sunrise and sunset from the Sky Terraces overlooking Lower Seletar Reservoir. From these elevated vantage points, take in sweeping greenery and reservoir views, where light, air, and space come together to create a tranquil, resort-like retreat.



SKY LOUNGE

For illustration purposes



For illustration purposes



Artist's Impression

MAKING ROOM FOR A PERFECT HOME

Lentor Gardens Residences offers extensive choices of 2-, 3- and 4-bedroom units. From couples to generational families, there is always a unit that will suit your needs. There are also terrace units that offer landed living with condominium facilities.



Artist's Impression



Artist's Impression



Artist's Impression

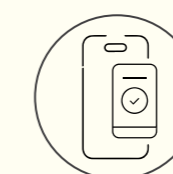
SANCTUARY LIVING, DESIGNED FOR MODERN LIFESTYLES

Experience refined living in a peaceful retreat, thoughtfully crafted to offer calm away from the city's pace. Contemporary interiors with soft, elegant touches create a warm and serene atmosphere. Comfort, security, and seamless connectivity come together to create a home designed for today's lifestyle.



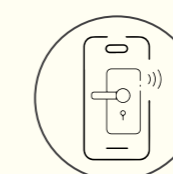
Artist's Impression

LIVE LIFE AT YOUR FINGERTIPS



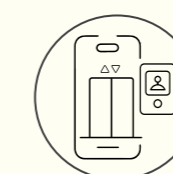
24/7 Facility Booking

Select and book your preferred facility any time.



Digital Lock

Unlock your home easily — no keys, just secure access every time.



Face-To-Face Greetings

Welcome your guests through the lift lobby's video intercom system.



Illustrative only. Model may vary.



SITE PLAN

Facilities at 1st Storey

- 1 Reflexology pool
- 2 Aqua Therapy Bed
- 3 Serenity Lagoon
- 4 Massage Pool
- 5 Hydro Massage Seat
- 6 Tranquil Spa Deck
- 7 50m Lap Pool
- 8 50m Pool Deck
- 9 Central Pool Deck
- 10 BBQ Pavilion 1
- 11 BBQ Pavilion 2
- 12 Splash Cove
- 13 Play Cove
- 14 Family Sun Deck
- 15 Floating Lounger Pool
- 16 75m Skyline
- 17 Hydro Jet Pool
- 18 Infinity Pool Deck
- 19 Ripple Boardwalk
- 20 Viewing Pavilion 1
- 21 Viewing Pavilion 2
- 22 Water Feature
- 23 Gym
- 24 Yoga Studio
- 25 Clubhouse
 - Function Room 1
 - Function Room 2
 - Function Room 3
- 26 Changing Room
- 27 Skyview Deck

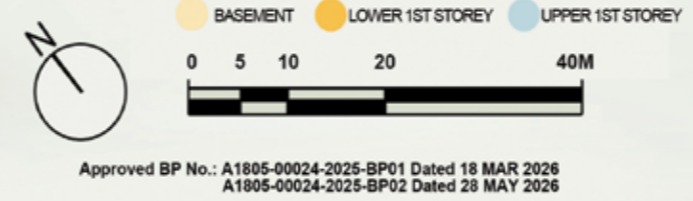
Facilities at Basement

- 28 Early Childhood Development Centre
- 29 Playground 'Early Childhood Development Centre'
- 30 Shops
- 31 Guard House
- 32 Lift from Basement to Edeck
- 33 Lift from Basement to Clubhouse
- 34 Management Office
- 35 Side Gate (Lentor Gardens)
- 36 Side Gate (Green Finger)
- 37 Drop off
- 38 Tennis Court
- 39 Bin Centre
- 40 Substation
- 41 Outdoor Genset
- 42 Ventilation Opening
- Water Tank



Legend

- 2-bedroom Premium | P1, P2, P3, P4
- 2-bedroom Premium + Household Shelter | P(HS)
- 2-bedroom + Study | S1, S2, S3, S4, S5, S6
- 3-bedroom Compact / + Study | C1, C2+S
- 3-bedroom Premium | P3, P4, P5, P6, P1+S, P2+S
- 4-bedroom Compact | C1, C2
- 4-bedroom Premium | P1, P2
- Terrace



Block 74



Facilities At Sky Terrace, On 9th Storey Block 74

- 44 Twilight Lounge
- 45 Floral Promenade
- 46 Skyline Pavilion
- 47 Sunset Serenity Cabana
- 48 Altitude Lounge
- 49 Skyline Grill Lounge
- 50 Alfresco Feast Deck

Block 76



Facilities At Sky Terrace, On 9th Storey Block 76

- 51 Sunset Serenity Cabana
- 52 Altitude Lounge
- 53 Twilight Lounge
- 54 Alfresco Feast Deck
- 55 Floral Promenade

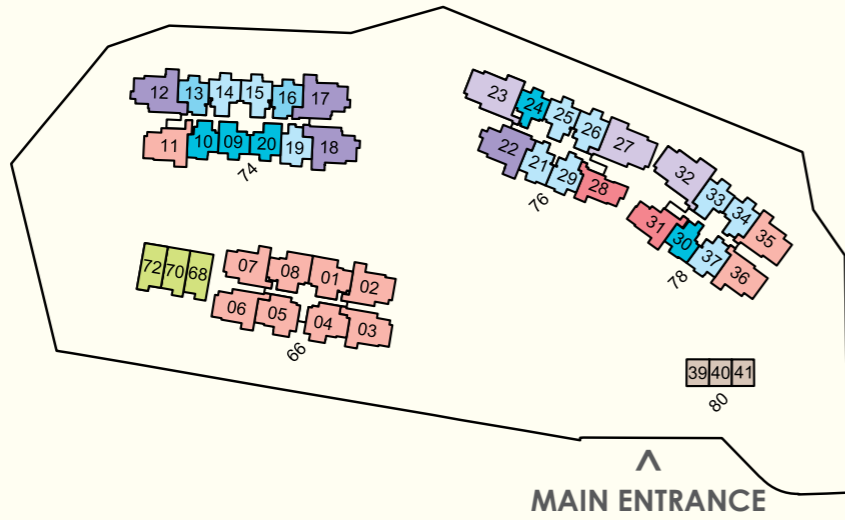
Block 78



Facilities At Sky Terrace, On 9th Storey Block 78

- 56 Gathering Lounge
- 57 Skyline Grill Lounge
- 58 Sunset Serenity Cabana
- 59 Sky Lounge
- 60 Altitude Lounge

UNIT DISTRIBUTION



Legend

- 2-bedroom Premium
P1, P2, P3, P4
- 2-bedroom Premium
+ Household Shelter
P(HS)
- 2-bedroom + Study
S1, S2, S3, S4, S5, S6
- 3-bedroom Compact / + Study
C1, C2+S
- 3-bedroom Premium
P3, P4, P5, P6,
P1+S, P2+S
- 4-bedroom Compact
C1, C2
- 4-bedroom Premium
P1, P2
- Terrace
- Shop

BLK 66 LENTOR GARDENS S(788840)

Stack Level	1	2	3	4	5	6	7	8
8	3BR P1+S	3BR P3	3BR P4	3BR P2+S	3BR P2+S	3BR P4	3BR P3	3BR P1+S
7	3BR P1+S	3BR P3	3BR P4	3BR P2+S	3BR P2+S	3BR P4	3BR P3	3BR P1+S
6	3BR P1+S	3BR P3	3BR P4	3BR P2+S	3BR P2+S	3BR P4	3BR P3	3BR P1+S
5	3BR P1+S	3BR P3	3BR P4	3BR P2+S	3BR P2+S	3BR P4	3BR P3	3BR P1+S
4	3BR P1+S	3BR P3	3BR P4	3BR P2+S	3BR P2+S	3BR P4	3BR P3	3BR P1+S
3	3BR P1+S	3BR P3	3BR P4	3BR P2+S	3BR P2+S	3BR P4	3BR P3	3BR P1+S
2	3BR P1+S	3BR P3	3BR P4	3BR P2+S	3BR P2+S	3BR P4	3BR P3	3BR P1+S
1	3BR P1+S	3BR P3	3BR P4	3BR P2+S	3BR P2+S	3BR P4	3BR P3	3BR P1+S

BLK 76 LENTOR GARDENS S(788798)

Stack Level	21	22	23	24	25	26	27	28	29
16	2BR S3	4BR C1	4BR P2	2BR P1	2BR S2	2BR S2	4BR P2	3BR C1	2BR S5
15	2BR S3	4BR C1	4BR P2	2BR P1	2BR S2	2BR S2	4BR P2	3BR C1	2BR S5
14	2BR S3	4BR C1	4BR P2	2BR P1	2BR S2	2BR S2	4BR P2	3BR C1	2BR S5
13	2BR S3	4BR C1	4BR P2	2BR P1	2BR S2	2BR S2	4BR P2	3BR C1	2BR S5
12	2BR S3	4BR C1	4BR P2	2BR P1	2BR S2	2BR S2	4BR P2	3BR C1	2BR S5
11	2BR S3	4BR C1	4BR P2	2BR P1	2BR S2	2BR S2	4BR P2	3BR C1	2BR S5
10	2BR S3	4BR C1	4BR P2	2BR P1	2BR S2	2BR S2	4BR P2	3BR C1	2BR S5
9	SKY GARDEN								
8	2BR S3	4BR C1	4BR P2	2BR P1	2BR S2	2BR S2	4BR P2	3BR C1	2BR S5
7	2BR S3	4BR C1	4BR P2	2BR P1	2BR S2	2BR S2	4BR P2	3BR C1	2BR S5
6	2BR S3	4BR C1	4BR P2	2BR P1	2BR S2	2BR S2	4BR P2	3BR C1	2BR S5
5	2BR S3	4BR C1	4BR P2	2BR P1	2BR S2	2BR S2	4BR P2	3BR C1	2BR S5
4	2BR S3	4BR C1	4BR P2	2BR P1	2BR S2	2BR S2	4BR P2	3BR C1	2BR S5
3	2BR S3	4BR C1	4BR P2	2BR P1	2BR S2	2BR S2	4BR P2	3BR C1	2BR S5
2	2BR S3	4BR C1	4BR P2	2BR P1	2BR S2	2BR S2	4BR P2	3BR C1	2BR S5
1	2BR S3	4BR C1	4BR P2	2BR P1	2BR S2	4BR P2	3BR C1	2BR S5	

BLK 74 LENTOR GARDENS S(788797)

Stack Level	9	10	11	12	13	14	15	16	17	18	19	20
16	2BR P3	2BR P2	3BR P5	4BR C2	2BR P (HS)	2BR S1	2BR S1	2BR P (HS)	4BR C2	4BR C2	2BR S4	2BR P3
15	2BR P3	2BR P2	3BR P5	4BR C2	2BR P (HS)	2BR S1	2BR S1	2BR P (HS)	4BR C2	4BR C2	2BR S4	2BR P3
14	2BR P3	2BR P2	3BR P5	4BR C2	2BR P (HS)	2BR S1	2BR S1	2BR P (HS)	4BR C2	4BR C2	2BR S4	2BR P3
13	2BR P3	2BR P2	3BR P5	4BR C2	2BR P (HS)	2BR S1	2BR S1	2BR P (HS)	4BR C2	4BR C2	2BR S4	2BR P3
12	2BR P3	2BR P2	3BR P5	4BR C2	2BR P (HS)	2BR S1	2BR S1	2BR P (HS)	4BR C2	4BR C2	2BR S4	2BR P3
11	2BR P3	2BR P2	3BR P5	4BR C2	2BR P (HS)	2BR S1	2BR S1	2BR P (HS)	4BR C2	4BR C2	2BR S4	2BR P3
10	2BR P3	2BR P2	3BR P5	4BR C2	2BR P (HS)	2BR S1	2BR S1	2BR P (HS)	4BR C2	4BR C2	2BR S4	2BR P3
9	SKY GARDEN											
8	2BR P3	2BR P2	3BR P5	4BR C2	2BR P (HS)	2BR S1	2BR S1	2BR P (HS)	4BR C2	4BR C2	2BR S4	2BR P3
7	2BR P3	2BR P2	3BR P5	4BR C2	2BR P (HS)	2BR S1	2BR S1	2BR P (HS)	4BR C2	4BR C2	2BR S4	2BR P3
6	2BR P3	2BR P2	3BR P5	4BR C2	2BR P (HS)	2BR S1	2BR S1	2BR P (HS)	4BR C2	4BR C2	2BR S4	2BR P3
5	2BR P3	2BR P2	3BR P5	4BR C2	2BR P (HS)	2BR S1	2BR S1	2BR P (HS)	4BR C2	4BR C2	2BR S4	2BR P3
4	2BR P3	2BR P2	3BR P5	4BR C2	2BR P (HS)	2BR S1	2BR S1	2BR P (HS)	4BR C2	4BR C2	2BR S4	2BR P3
3	2BR P3	2BR P2	3BR P5	4BR C2	2BR P (HS)	2BR S1	2BR S1	2BR P (HS)	4BR C2	4BR C2	2BR S4	2BR P3
2	2BR P3	2BR P2	3BR P5	4BR C2	2BR P (HS)	2BR S1	2BR S1	2BR P (HS)	4BR C2	4BR C2	2BR S4	2BR P3
1	2BR P3	2BR P2	3BR P5	4BR C2	2BR P (HS)	2BR S1		2BR P (HS)	4BR C2	4BR C2	2BR S4	2BR P3

BLK 78 LENTOR GARDENS S(788799)

Stack Level	30	31	32	33	34	35	36	37
16	2BR P4	3BR C2+S	4BR P1	2BR S1	2BR S6	3BR P6	3BR P6	2BR S5
15	2BR P4	3BR C2+S	4BR P1	2BR S1	2BR S6	3BR P6	3BR P6	2BR S5
14	2BR P4	3BR C2+S	4BR P1	2BR S1	2BR S6	3BR P6	3BR P6	2BR S5
13	2BR P4	3BR C2+S	4BR P1	2BR S1	2BR S6	3BR P6	3BR P6	2BR S5
12	2BR P4	3BR C2+S	4BR P1	2BR S1	2BR S6	3BR P6	3BR P6	2BR S5
11	2BR P4	3BR C2+S	4BR P1	2BR S1	2BR S6	3BR P6	3BR P6	2BR S5
10	2BR P4	3BR C2+S	4BR P1	2BR S1	2BR S6	3BR P6	3BR P6	2BR S5
9	SKY GARDEN							
8	2BR P4	3BR C2+S	4BR P1	2BR S1	2BR S6	3BR P6	3BR P6	2BR S5
7	2BR P4	3BR C2+S	4BR P1	2BR S1	2BR S6	3BR P6	3BR P6	2BR S5
6	2BR P4	3BR C2+S	4BR P1	2BR S1	2BR S6	3BR P6	3BR P6	2BR S5
5	2BR P4	3BR C2+S	4BR P1	2BR S1	2BR S6	3BR P6	3BR P6	2BR S5
4	2BR P4	3BR C2+S	4BR P1	2BR S1	2BR S6	3BR P6	3BR P6	2BR S5
3	2BR P4	3BR C2+S	4BR P1	2BR S1	2BR S6	3BR P6	3BR P6	2BR S5
2	2BR P4	3BR C2+S	4BR P1	2BR S1	2BR S6	3BR P6	3BR P6	2BR S5
1	2BR P4	3BR C2+S	4BR P1	2BR S1		3BR P6	3BR P6	2BR S5

TERRACE LENTOR GARDENS

72 S(788843)	70 S(788842)	68 S(788841)
-----------------	-----------------	-----------------

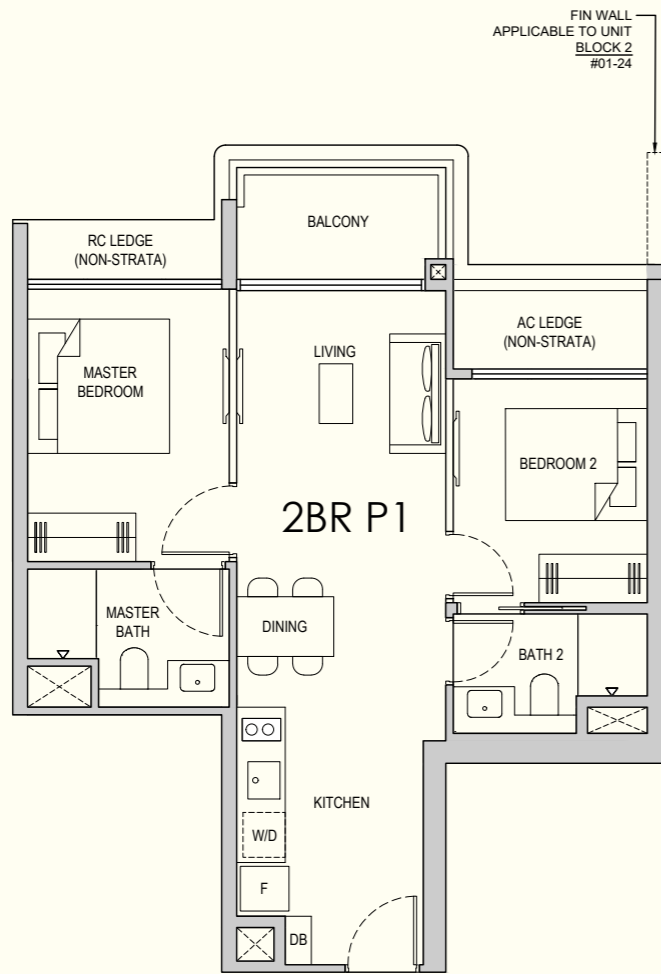
BLK 80 LENTOR GARDENS S(788800)

#B1-39	#B1-40	#B1-41
--------	--------	--------

2-BEDROOM

TYPE 2BR P1
60 sqm / 646 sqft

#01-24 to #08-24
#10-24 to #16-24



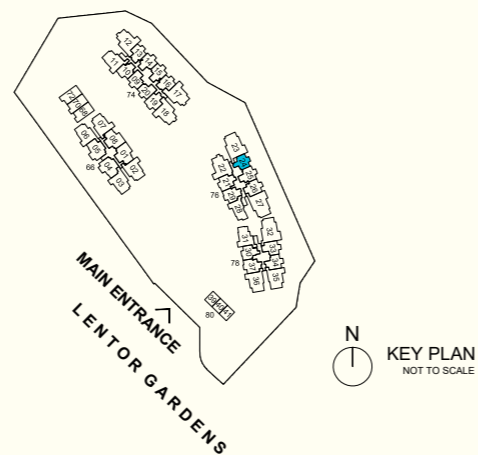
BP NO. :
A1805-00024-2025-BP01 - 18 MAR 2026
A1805-00024-2025-BP02 - 28 MAY 2026



- Legend
- F Fridge
 - W/D Washer cum Dryer
 - DB Distribution Board
 - HS Household Shelter
 - AC LEDGE Air-Conditioner Ledge (Excluded from Strata Area)
 - RC LEDGE Reinforced Concrete Ledge (Excluded from Strata Area)
 - ⊠ Void Space / Rainwater Down Pipe (Excluded from Strata Area)

Wall not allowed to be hacked or altered (including by way of drilling)

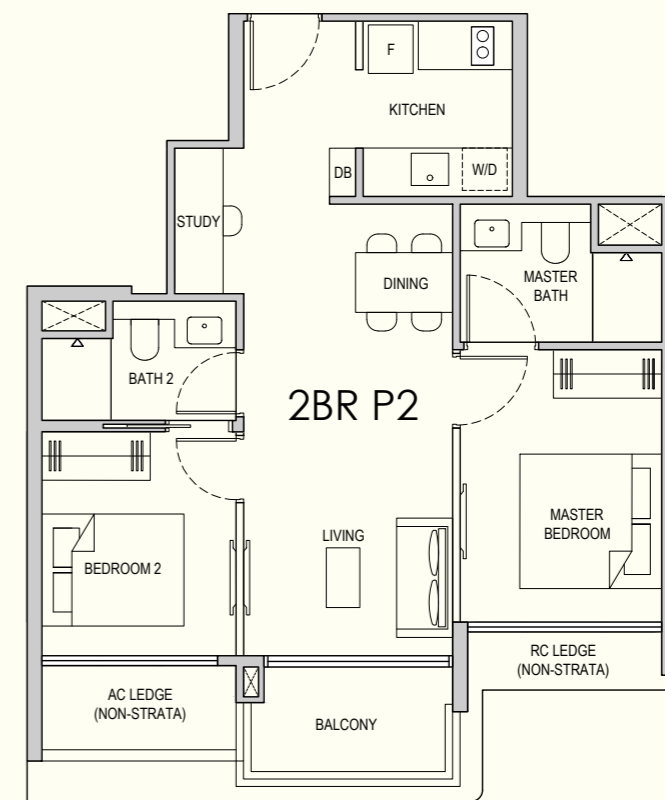
Area includes balcony, where applicable. All AC ledges and RC ledges are excluded from strata area. All RC ledges are non-load bearing. The plans are subjected to change as required by relevant authorities. All areas and measurements stated herein are approximate and subject to final survey.



2-BEDROOM

TYPE 2BR P2
63 sqm / 678 sqft

#01-10 to #08-10
#10-10 to #16-10



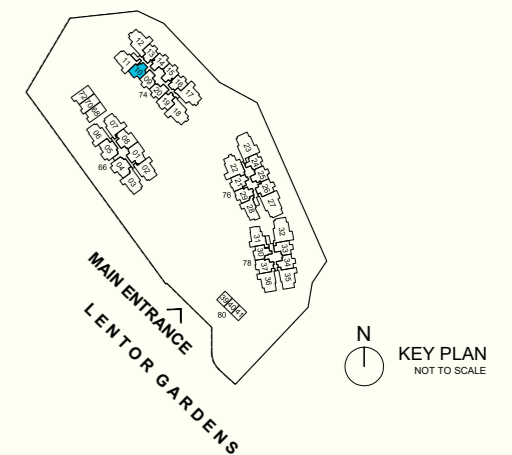
BP NO. :
A1805-00024-2025-BP01 - 18 MAR 2026
A1805-00024-2025-BP02 - 28 MAY 2026



- Legend
- F Fridge
 - W/D Washer cum Dryer
 - DB Distribution Board
 - HS Household Shelter
 - AC LEDGE Air-Conditioner Ledge (Excluded from Strata Area)
 - RC LEDGE Reinforced Concrete Ledge (Excluded from Strata Area)
 - ⊠ Void Space / Rainwater Down Pipe (Excluded from Strata Area)

Wall not allowed to be hacked or altered (including by way of drilling)

Area includes balcony, where applicable. All AC ledges and RC ledges are excluded from strata area. All RC ledges are non-load bearing. The plans are subjected to change as required by relevant authorities. All areas and measurements stated herein are approximate and subject to final survey.



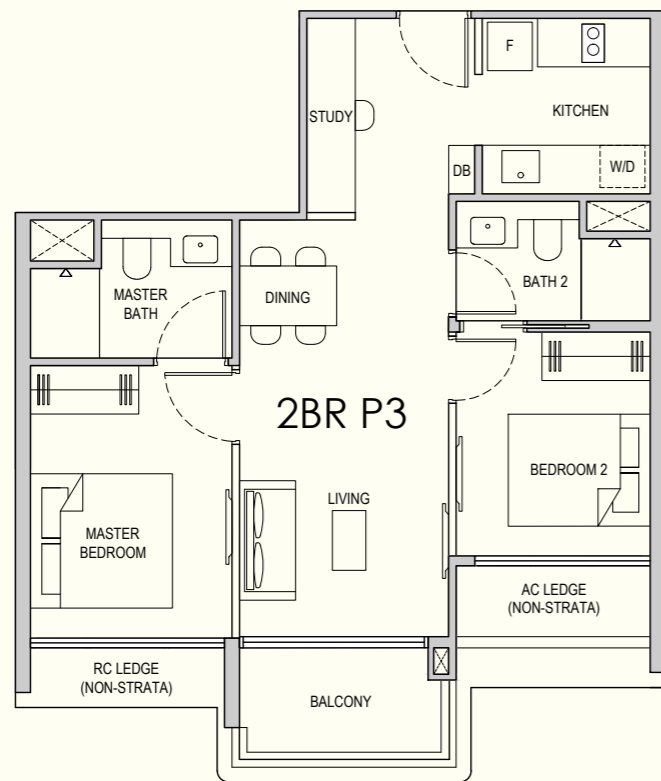
2-BEDROOM

TYPE 2BR P3

63 sqm / 678 sqft

#01-09 to #08-09
#10-09 to #16-09

#01-20 to #08-20* (Mirror)
#10-20 to #16-20* (Mirror)



BP NO. :
A1805-00024-2025-BP01 - 18 MAR 2026
A1805-00024-2025-BP02 - 28 MAY 2026

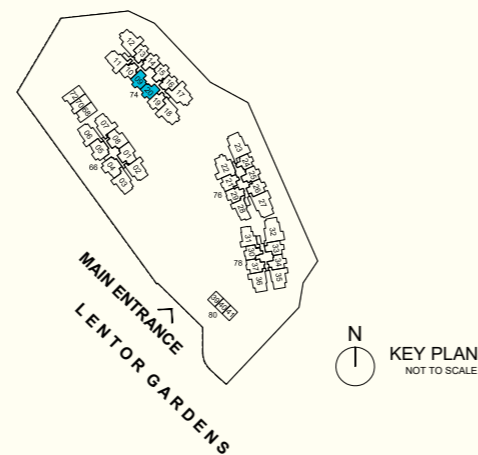


Legend

F	Fridge
W/D	Washer cum Dryer
DB	Distribution Board
HS	Household Shelter
AC LEDGE	Air-Conditioner Ledge (Excluded from Strata Area)
RC LEDGE	Reinforced Concrete Ledge (Excluded from Strata Area)
⊠	Void Space / Rainwater Down Pipe (Excluded from Strata Area)

Wall not allowed to be hacked or altered (including by way of drilling)

Area includes balcony, where applicable. All AC ledges and RC ledges are excluded from strata area. All RC ledges are non-load bearing. The plans are subjected to change as required by relevant authorities. All areas and measurements stated herein are approximate and subject to final survey.

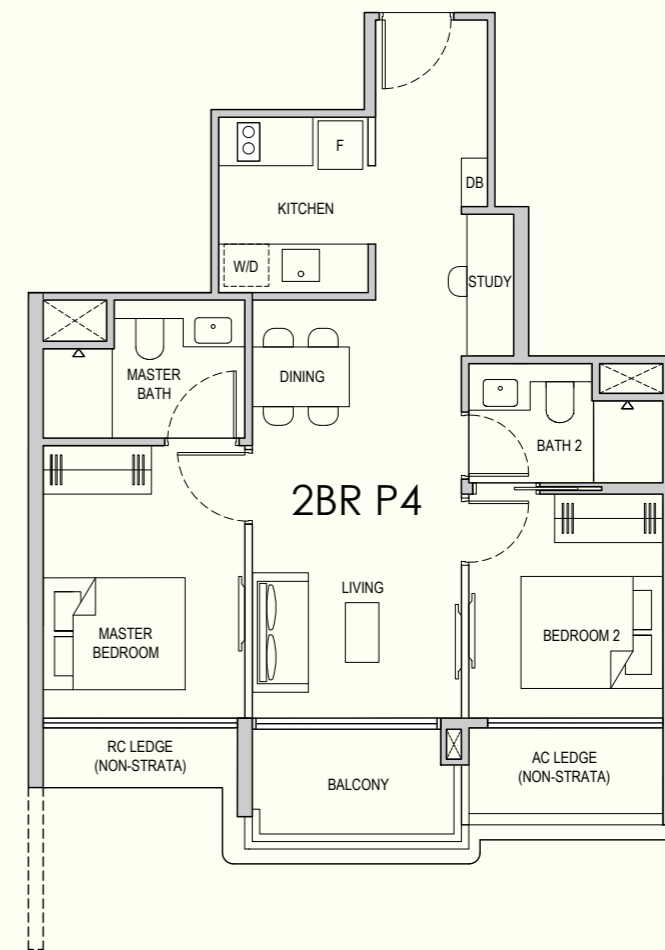


2-BEDROOM

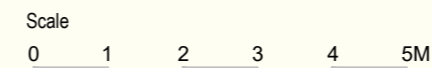
TYPE 2BR P4

63 sqm / 678 sqft

#01-30 to #08-30
#10-30 to #16-30



BP NO. :
A1805-00024-2025-BP01 - 18 MAR 2026
A1805-00024-2025-BP02 - 28 MAY 2026

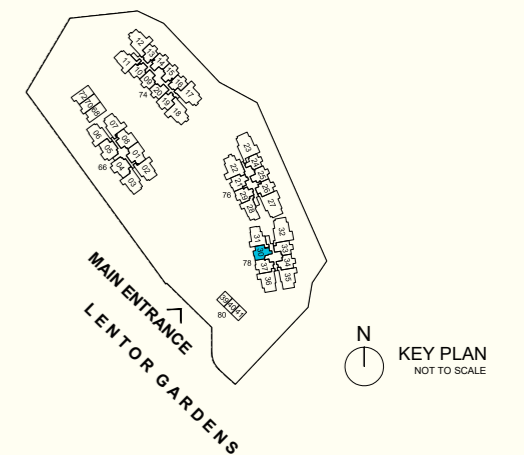


Legend

F	Fridge
W/D	Washer cum Dryer
DB	Distribution Board
HS	Household Shelter
AC LEDGE	Air-Conditioner Ledge (Excluded from Strata Area)
RC LEDGE	Reinforced Concrete Ledge (Excluded from Strata Area)
⊠	Void Space / Rainwater Down Pipe (Excluded from Strata Area)

Wall not allowed to be hacked or altered (including by way of drilling)

Area includes balcony, where applicable. All AC ledges and RC ledges are excluded from strata area. All RC ledges are non-load bearing. The plans are subjected to change as required by relevant authorities. All areas and measurements stated herein are approximate and subject to final survey.

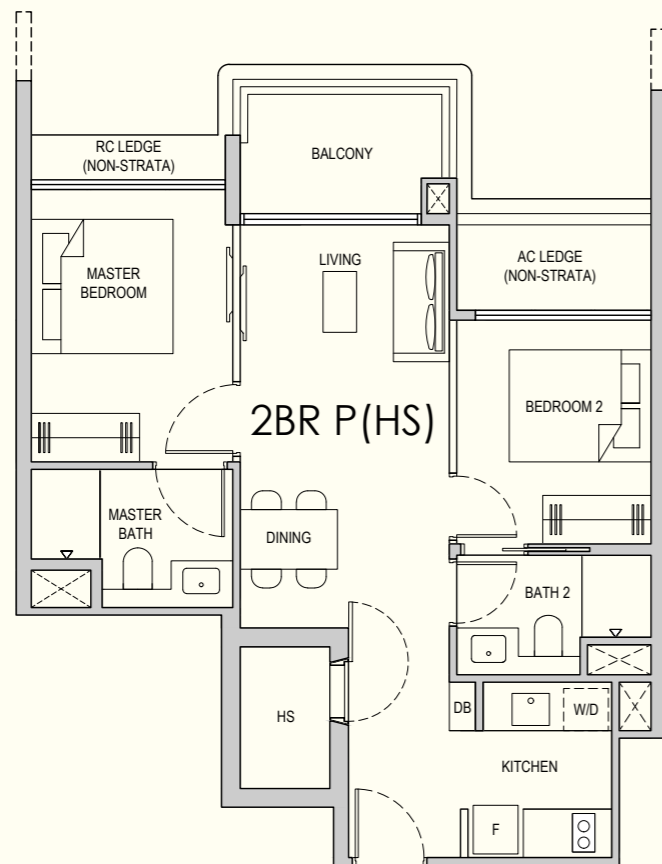


2-BEDROOM

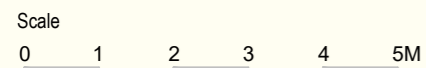
TYPE 2BR P(HS)
64 sqm / 689 sqft

#01-13 to #08-13
#10-13 to #16-13

#01-16 to #08-16* (Mirror)
#10-16 to #16-16* (Mirror)



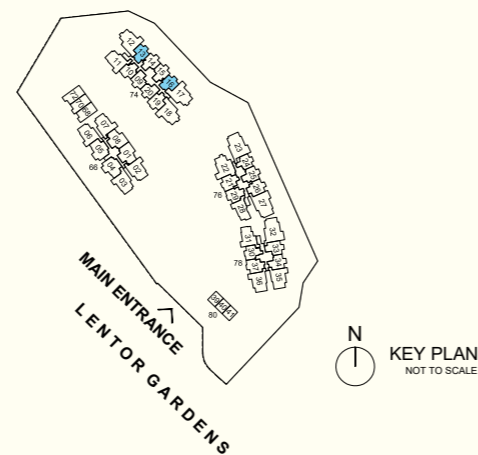
BP NO. :
A1805-00024-2025-BP01 - 18 MAR 2026
A1805-00024-2025-BP02 - 28 MAY 2026



- Legend
- F Fridge
 - W/D Washer cum Dryer
 - DB Distribution Board
 - HS Household Shelter
 - AC LEDGE Air-Conditioner Ledge (Excluded from Strata Area)
 - RC LEDGE Reinforced Concrete Ledge (Excluded from Strata Area)
 - ⊠ Void Space / Rainwater Down Pipe (Excluded from Strata Area)

Wall not allowed to be hacked or altered (including by way of drilling)

Area includes balcony, where applicable. All AC ledges and RC ledges are excluded from strata area. All RC ledges are non-load bearing. The plans are subjected to change as required by relevant authorities. All areas and measurements stated herein are approximate and subject to final survey.



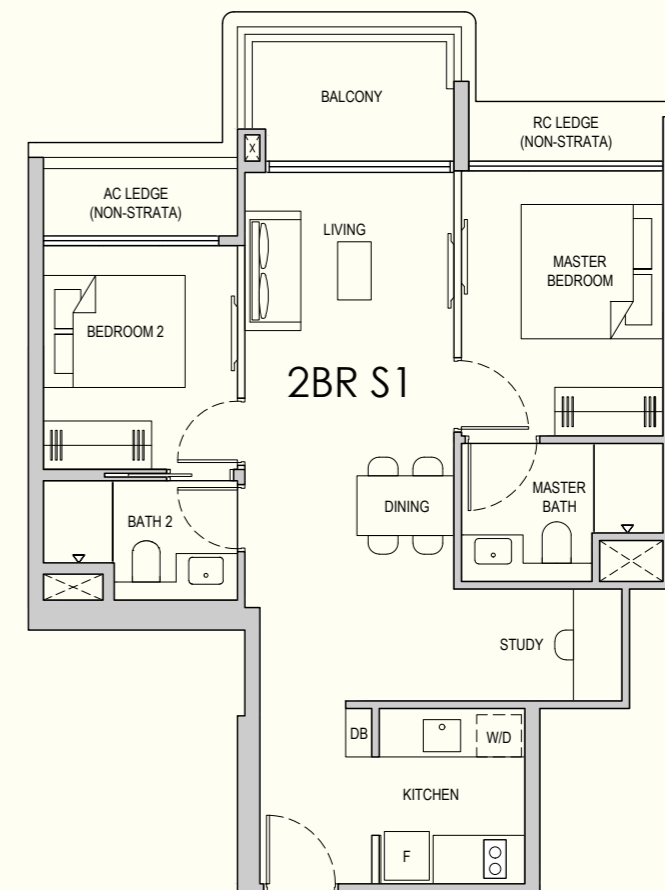
2-BEDROOM

TYPE 2BR S1
68 sqm / 732 sqft

#01-14 to #08-14* (Mirror)
#10-14 to #16-14* (Mirror)

#02-15 to #08-15
#10-15 to #16-15

#01-33 to #08-33* (Mirror)
#10-33 to #16-33* (Mirror)



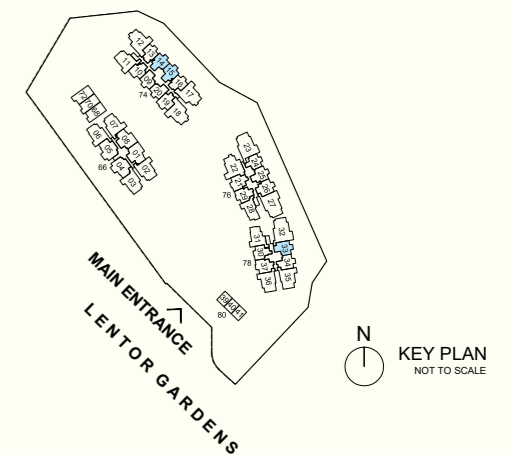
BP NO. :
A1805-00024-2025-BP01 - 18 MAR 2026
A1805-00024-2025-BP02 - 28 MAY 2026



- Legend
- F Fridge
 - W/D Washer cum Dryer
 - DB Distribution Board
 - HS Household Shelter
 - AC LEDGE Air-Conditioner Ledge (Excluded from Strata Area)
 - RC LEDGE Reinforced Concrete Ledge (Excluded from Strata Area)
 - ⊠ Void Space / Rainwater Down Pipe (Excluded from Strata Area)

Wall not allowed to be hacked or altered (including by way of drilling)

Area includes balcony, where applicable. All AC ledges and RC ledges are excluded from strata area. All RC ledges are non-load bearing. The plans are subjected to change as required by relevant authorities. All areas and measurements stated herein are approximate and subject to final survey.



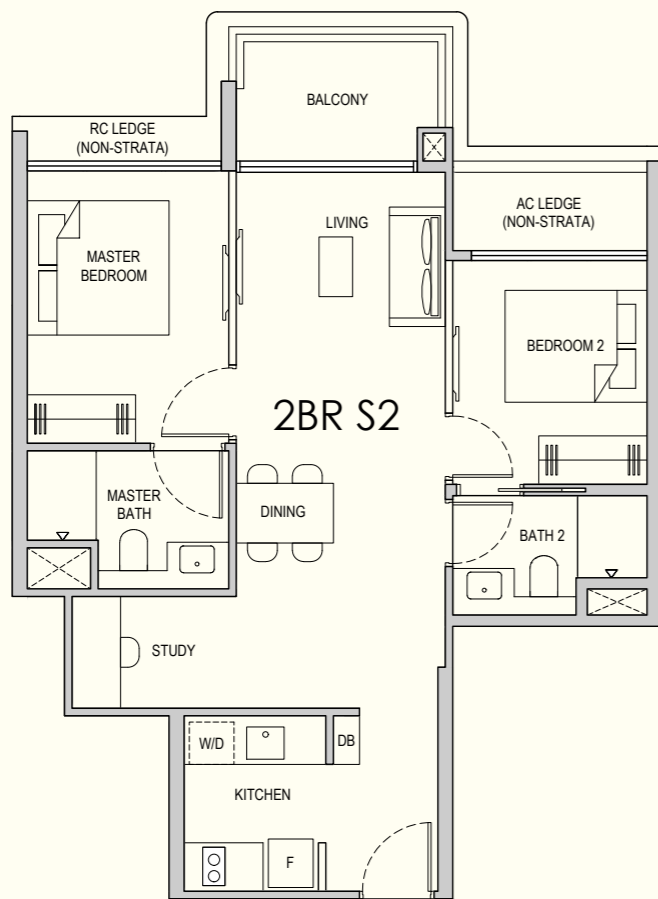
2-BEDROOM

TYPE 2BR S2

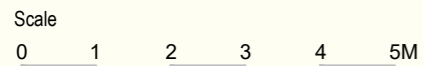
68 sqm / 732 sqft

#02-25 to #08-25* (Mirror)
#10-25 to #16-25* (Mirror)

#01-26 to #08-26
#10-26 to #16-26



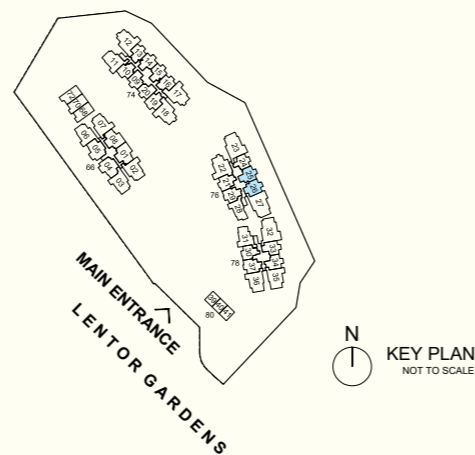
BP NO. :
A1805-00024-2025-BP01 - 18 MAR 2026
A1805-00024-2025-BP02 - 28 MAY 2026



- Legend
- F Fridge
 - W/D Washer cum Dryer
 - DB Distribution Board
 - HS Household Shelter
 - AC LEDGE Air-Conditioner Ledge (Excluded from Strata Area)
 - RC LEDGE Reinforced Concrete Ledge (Excluded from Strata Area)
 - ⊠ Void Space / Rainwater Down Pipe (Excluded from Strata Area)

Wall not allowed to be hacked or altered (including by way of drilling)

Area includes balcony, where applicable. All AC ledges and RC ledges are excluded from strata area. All RC ledges are non-load bearing. The plans are subjected to change as required by relevant authorities. All areas and measurements stated herein are approximate and subject to final survey.

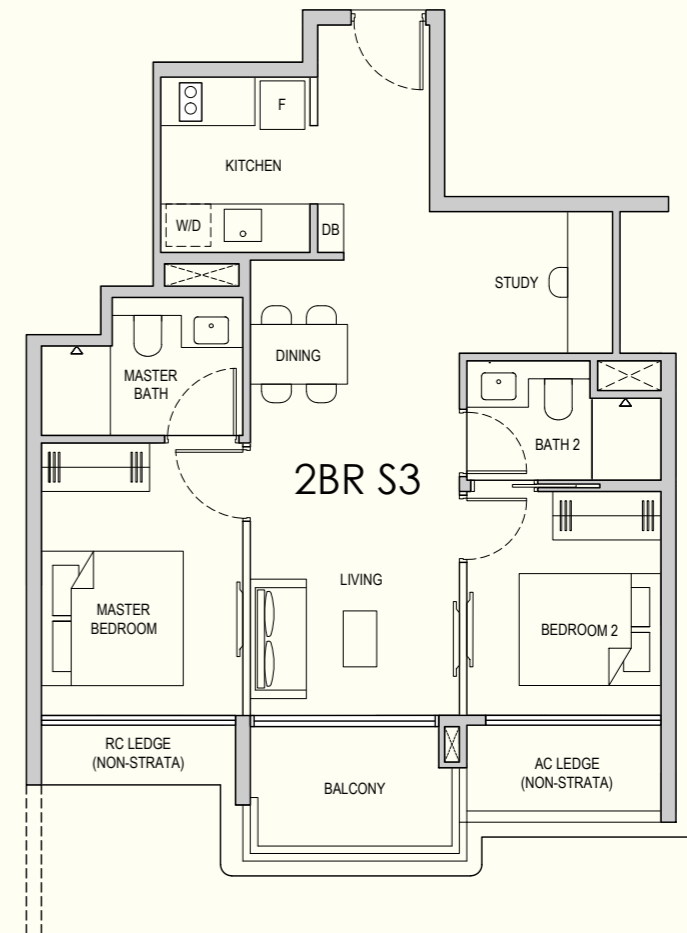


2-BEDROOM

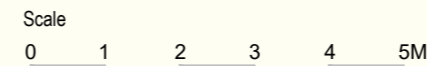
TYPE 2BR S3

68 sqm / 732 sqft

#01-21 to #08-21
#10-21 to #16-21



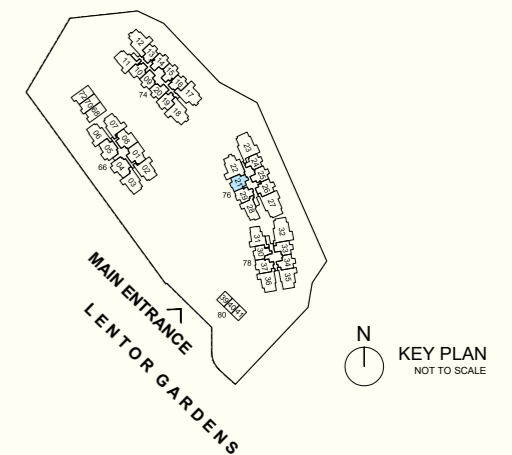
BP NO. :
A1805-00024-2025-BP01 - 18 MAR 2026
A1805-00024-2025-BP02 - 28 MAY 2026



- Legend
- F Fridge
 - W/D Washer cum Dryer
 - DB Distribution Board
 - HS Household Shelter
 - AC LEDGE Air-Conditioner Ledge (Excluded from Strata Area)
 - RC LEDGE Reinforced Concrete Ledge (Excluded from Strata Area)
 - ⊠ Void Space / Rainwater Down Pipe (Excluded from Strata Area)

Wall not allowed to be hacked or altered (including by way of drilling)

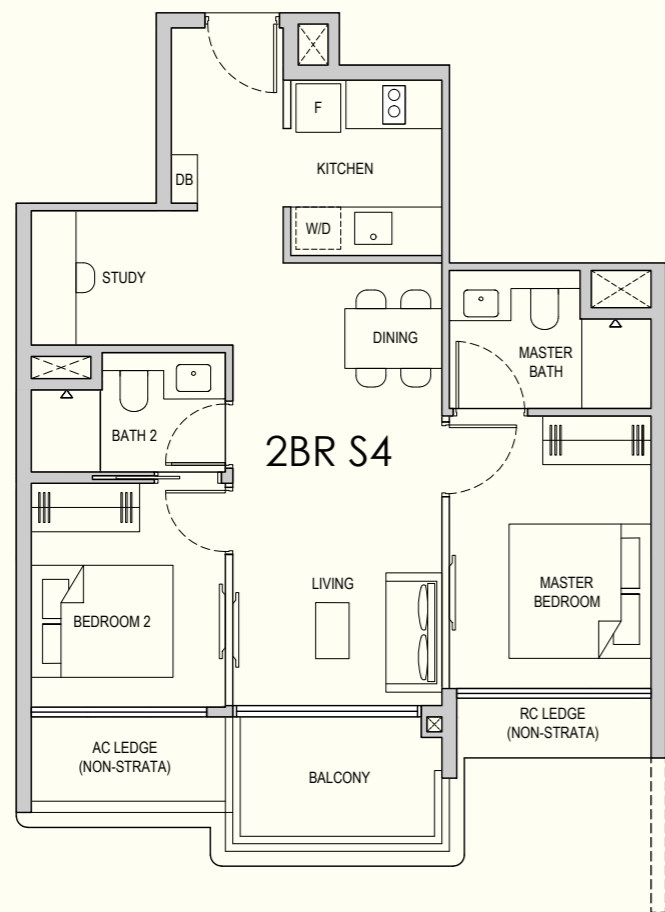
Area includes balcony, where applicable. All AC ledges and RC ledges are excluded from strata area. All RC ledges are non-load bearing. The plans are subjected to change as required by relevant authorities. All areas and measurements stated herein are approximate and subject to final survey.



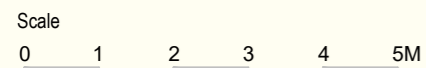
2-BEDROOM

TYPE 2BR S4
68 sqm / 732 sqft

#01-19 to #08-19
#10-19 to #16-19



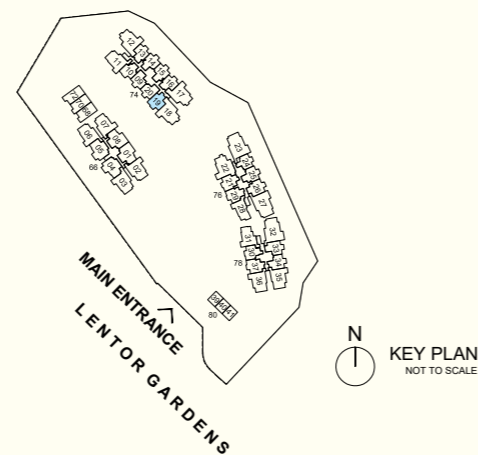
BP NO. :
A1805-00024-2025-BP01 - 18 MAR 2026
A1805-00024-2025-BP02 - 28 MAY 2026



- Legend
- F Fridge
 - W/D Washer cum Dryer
 - DB Distribution Board
 - HS Household Shelter
 - AC LEDGE Air-Conditioner Ledge (Excluded from Strata Area)
 - RC LEDGE Reinforced Concrete Ledge (Excluded from Strata Area)
 - ⊠ Void Space / Rainwater Down Pipe (Excluded from Strata Area)

Wall not allowed to be hacked or altered (including by way of drilling)

Area includes balcony, where applicable. All AC ledges and RC ledges are excluded from strata area. All RC ledges are non-load bearing. The plans are subjected to change as required by relevant authorities. All areas and measurements stated herein are approximate and subject to final survey.



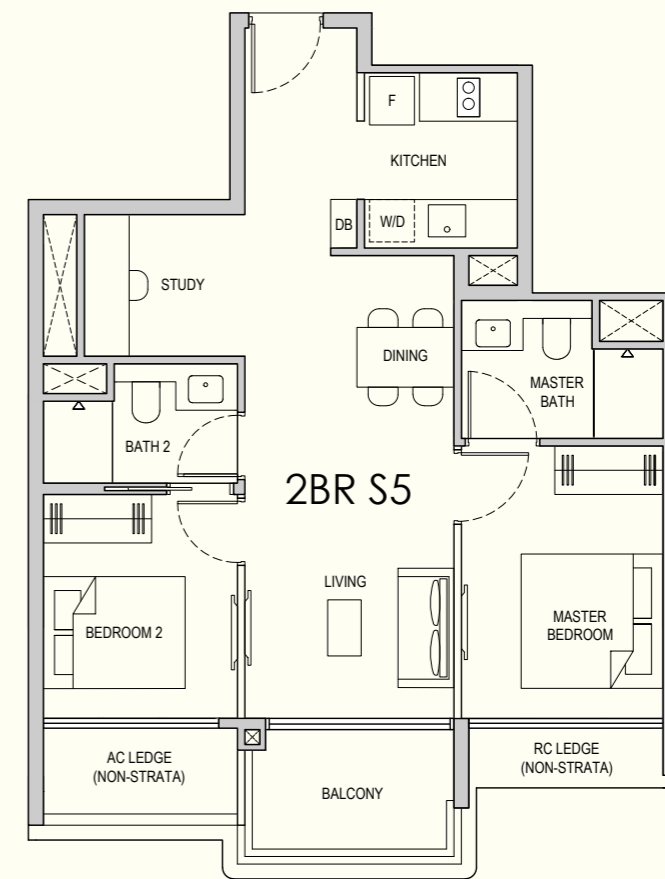
N
KEY PLAN
NOT TO SCALE

2-BEDROOM

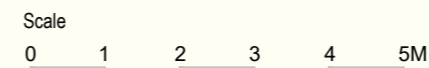
TYPE 2BR S5
68 sqm / 732 sqft

#01-29 to #08-29
#10-29 to #16-29

#01-37 to #08-37
#10-37 to #16-37



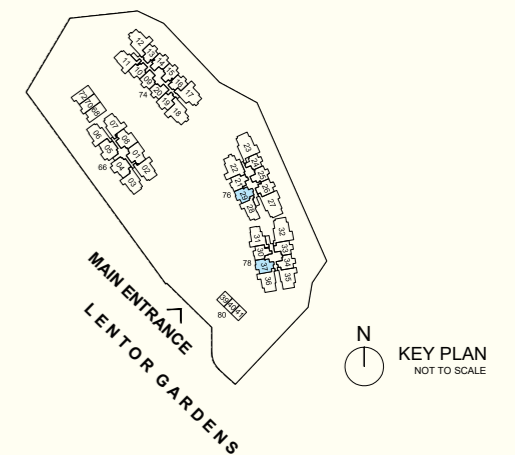
BP NO. :
A1805-00024-2025-BP01 - 18 MAR 2026
A1805-00024-2025-BP02 - 28 MAY 2026



- Legend
- F Fridge
 - W/D Washer cum Dryer
 - DB Distribution Board
 - HS Household Shelter
 - AC LEDGE Air-Conditioner Ledge (Excluded from Strata Area)
 - RC LEDGE Reinforced Concrete Ledge (Excluded from Strata Area)
 - ⊠ Void Space / Rainwater Down Pipe (Excluded from Strata Area)

Wall not allowed to be hacked or altered (including by way of drilling)

Area includes balcony, where applicable. All AC ledges and RC ledges are excluded from strata area. All RC ledges are non-load bearing. The plans are subjected to change as required by relevant authorities. All areas and measurements stated herein are approximate and subject to final survey.

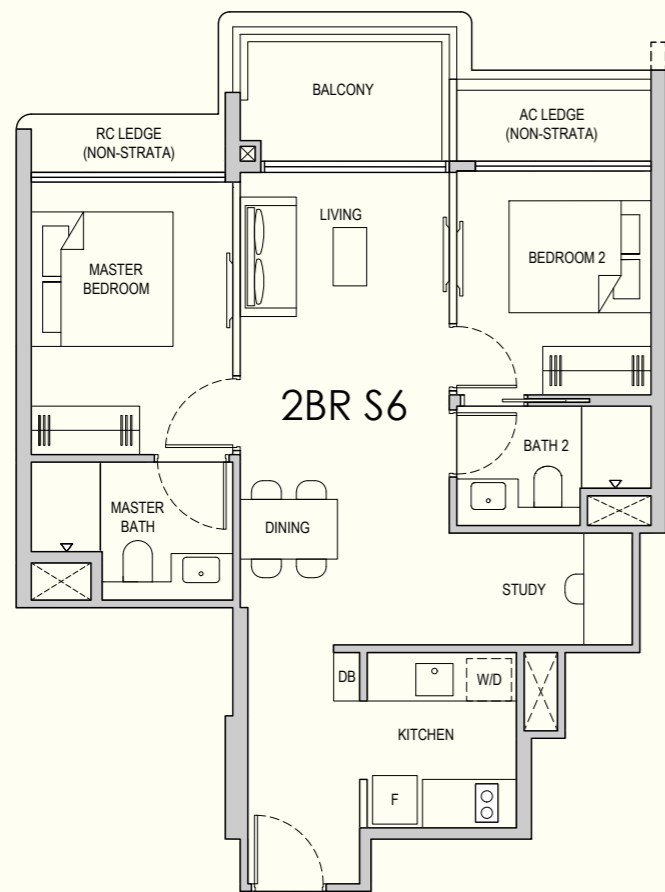


N
KEY PLAN
NOT TO SCALE

2-BEDROOM

TYPE 2BR S6
68 sqm / 732 sqft

#02-34 to #08-34
#10-34 to #16-34



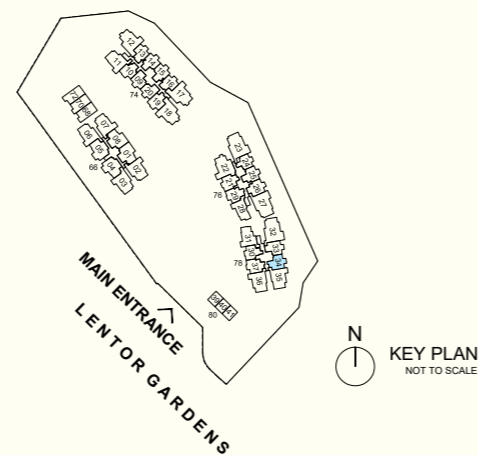
BP NO. :
A1805-00024-2025-BP01 - 18 MAR 2026
A1805-00024-2025-BP02 - 28 MAY 2026



- Legend
- F Fridge
 - W/D Washer cum Dryer
 - DB Distribution Board
 - HS Household Shelter
 - AC LEDGE Air-Conditioner Ledge (Excluded from Strata Area)
 - RC LEDGE Reinforced Concrete Ledge (Excluded from Strata Area)
 - ⊠ Void Space / Rainwater Down Pipe (Excluded from Strata Area)

Wall not allowed to be hacked or altered (including by way of drilling)

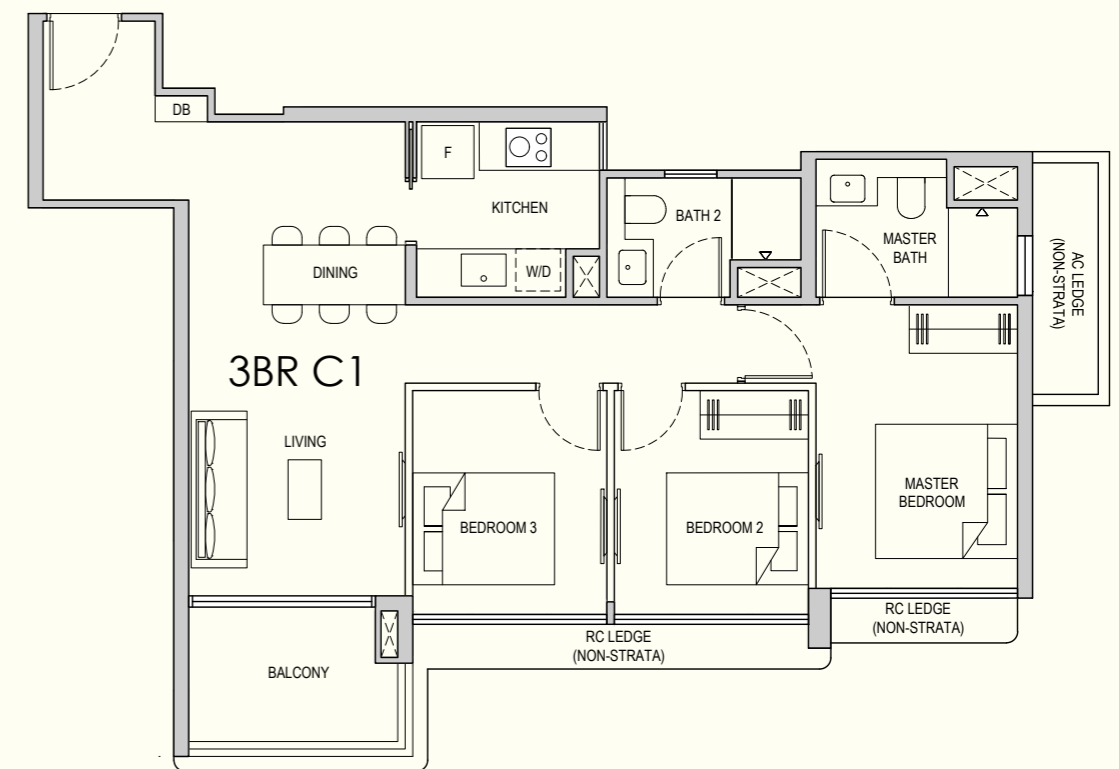
Area includes balcony, where applicable. All AC ledges and RC ledges are excluded from strata area. All RC ledges are non-load bearing. The plans are subjected to change as required by relevant authorities. All areas and measurements stated herein are approximate and subject to final survey.



3-BEDROOM

TYPE 3BR C1
81 sqm / 872 sqft

#01-28 to #08-28
#10-28 to #16-28



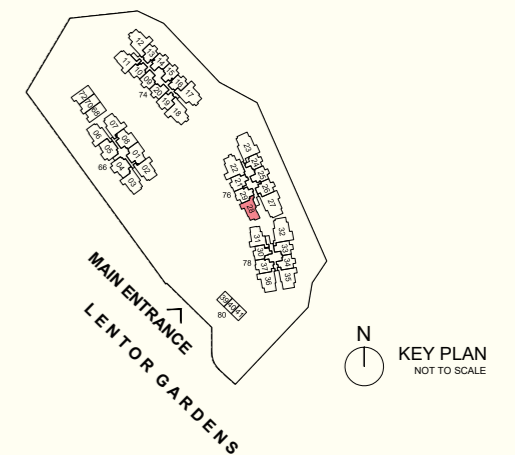
BP NO. :
A1805-00024-2025-BP01 - 18 MAR 2026
A1805-00024-2025-BP02 - 28 MAY 2026



- Legend
- F Fridge
 - W/D Washer cum Dryer
 - DB Distribution Board
 - HS Household Shelter
 - AC LEDGE Air-Conditioner Ledge (Excluded from Strata Area)
 - RC LEDGE Reinforced Concrete Ledge (Excluded from Strata Area)
 - ⊠ Void Space / Rainwater Down Pipe (Excluded from Strata Area)

Wall not allowed to be hacked or altered (including by way of drilling)

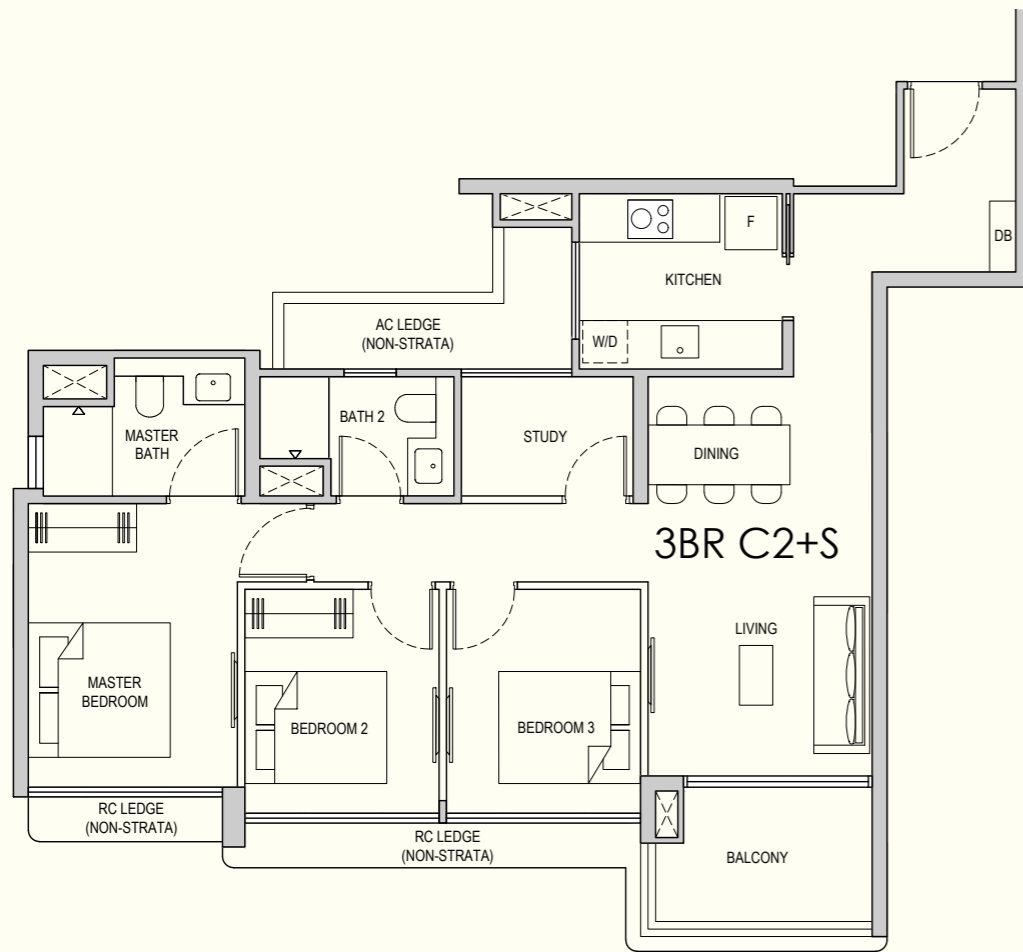
Area includes balcony, where applicable. All AC ledges and RC ledges are excluded from strata area. All RC ledges are non-load bearing. The plans are subjected to change as required by relevant authorities. All areas and measurements stated herein are approximate and subject to final survey.



3-BEDROOM

TYPE 3BR C2+S
87 sqm / 936 sqft

#01-31 to #08-31
#10-31 to #16-31



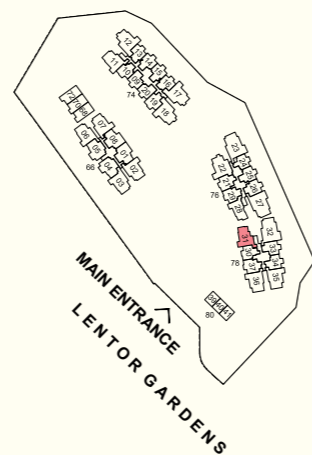
BP NO. :
A1805-00024-2025-BP01 - 18 MAR 2026
A1805-00024-2025-BP02 - 28 MAY 2026



- Legend
- F Fridge
 - W/D Washer cum Dryer
 - DB Distribution Board
 - HS Household Shelter
 - AC LEDGE Air-Conditioner Ledge (Excluded from Strata Area)
 - RC LEDGE Reinforced Concrete Ledge (Excluded from Strata Area)
 - ⊠ Void Space / Rainwater Down Pipe (Excluded from Strata Area)

Wall not allowed to be hacked or altered (including by way of drilling)

Area includes balcony, where applicable. All AC ledges and RC ledges are excluded from strata area. All RC ledges are non-load bearing. The plans are subjected to change as required by relevant authorities. All areas and measurements stated herein are approximate and subject to final survey.

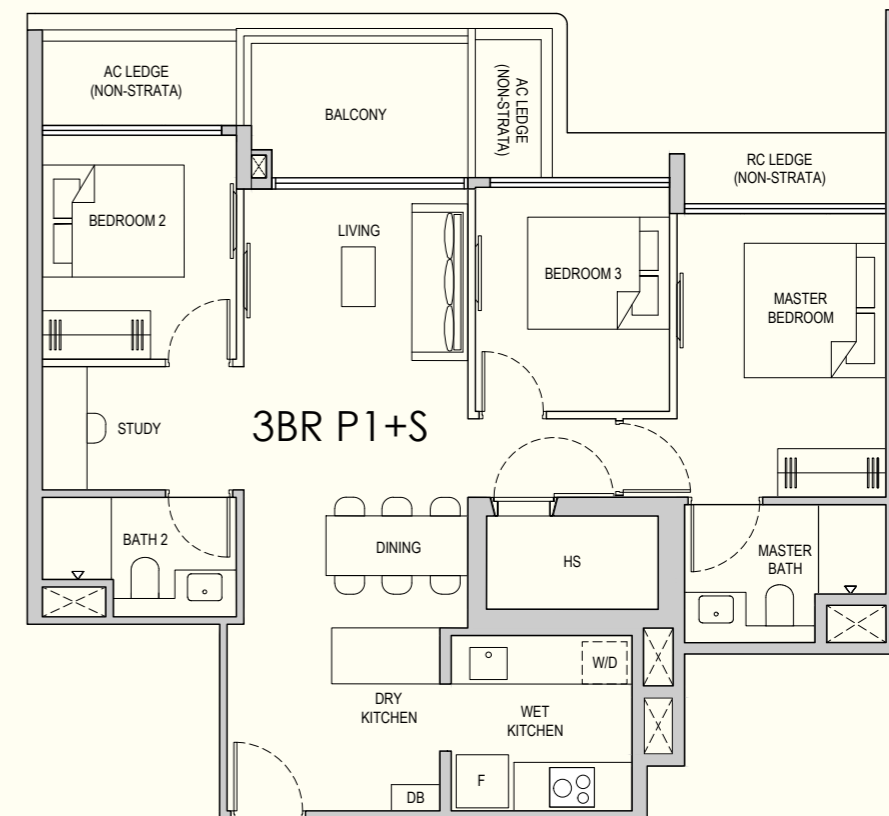


N
KEY PLAN
NOT TO SCALE

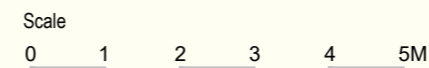
3-BEDROOM

TYPE 3BR P1+S
90 sqm / 969 sqft

#01-01 to #08-01
#01-08 to #08-08* (Mirror)



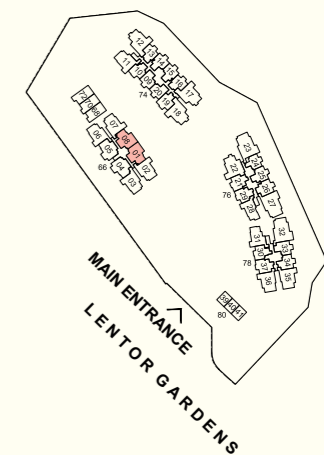
BP NO. :
A1805-00024-2025-BP01 - 18 MAR 2026
A1805-00024-2025-BP02 - 28 MAY 2026



- Legend
- F Fridge
 - W/D Washer cum Dryer
 - DB Distribution Board
 - HS Household Shelter
 - AC LEDGE Air-Conditioner Ledge (Excluded from Strata Area)
 - RC LEDGE Reinforced Concrete Ledge (Excluded from Strata Area)
 - ⊠ Void Space / Rainwater Down Pipe (Excluded from Strata Area)

Wall not allowed to be hacked or altered (including by way of drilling)

Area includes balcony, where applicable. All AC ledges and RC ledges are excluded from strata area. All RC ledges are non-load bearing. The plans are subjected to change as required by relevant authorities. All areas and measurements stated herein are approximate and subject to final survey.



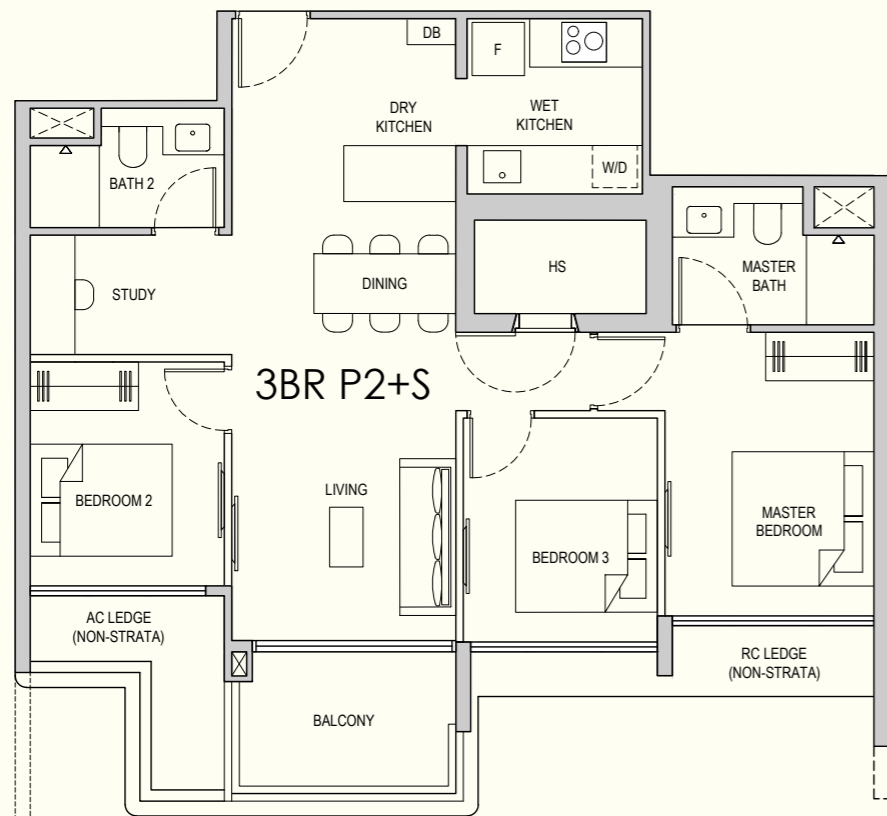
N
KEY PLAN
NOT TO SCALE

3-BEDROOM

TYPE 3BR P2+S
90 sqm / 969 sqft

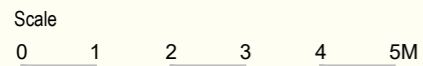
#01-04 to #08-04

#01-05 to #08-05* (Mirror)



FIN WALL
APPLICABLE TO UNIT
BLOCK 4
#01-04
#01-05 (Mirror)

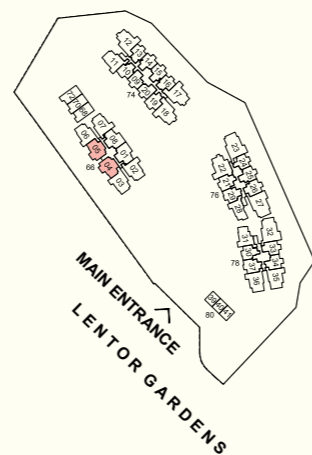
BP NO. :
A1805-00024-2025-BP01 - 18 MAR 2026
A1805-00024-2025-BP02 - 28 MAY 2026



- Legend
- F Fridge
 - W/D Washer cum Dryer
 - DB Distribution Board
 - HS Household Shelter
 - AC LEDGE Air-Conditioner Ledge (Excluded from Strata Area)
 - RC LEDGE Reinforced Concrete Ledge (Excluded from Strata Area)
 - ⊠ Void Space / Rainwater Down Pipe (Excluded from Strata Area)

Wall not allowed to be hacked or altered (including by way of drilling)

Area includes balcony, where applicable. All AC ledges and RC ledges are excluded from strata area. All RC ledges are non-load bearing. The plans are subjected to change as required by relevant authorities. All areas and measurements stated herein are approximate and subject to final survey.



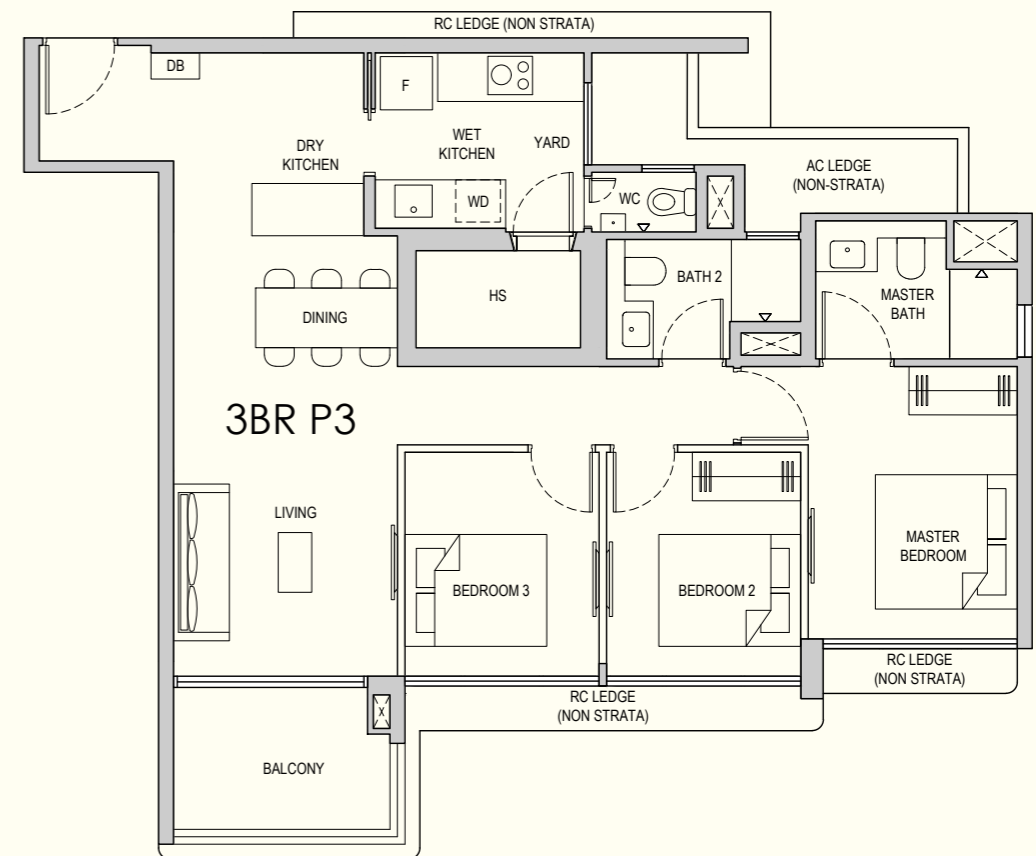
N
KEY PLAN
NOT TO SCALE

3-BEDROOM

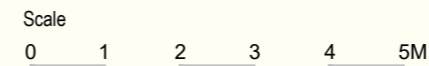
TYPE 3BR P3
93 sqm / 1001 sqft

#01-02 to #08-02* (Mirror)

#01-07 to #08-07



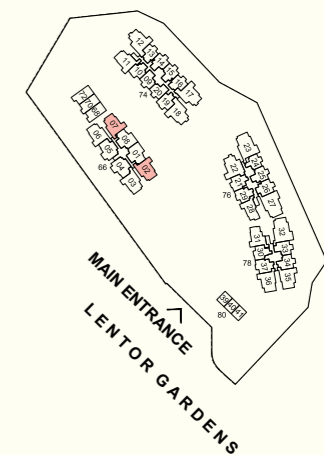
BP NO. :
A1805-00024-2025-BP01 - 18 MAR 2026
A1805-00024-2025-BP02 - 28 MAY 2026



- Legend
- F Fridge
 - W/D Washer cum Dryer
 - DB Distribution Board
 - HS Household Shelter
 - AC LEDGE Air-Conditioner Ledge (Excluded from Strata Area)
 - RC LEDGE Reinforced Concrete Ledge (Excluded from Strata Area)
 - ⊠ Void Space / Rainwater Down Pipe (Excluded from Strata Area)

Wall not allowed to be hacked or altered (including by way of drilling)

Area includes balcony, where applicable. All AC ledges and RC ledges are excluded from strata area. All RC ledges are non-load bearing. The plans are subjected to change as required by relevant authorities. All areas and measurements stated herein are approximate and subject to final survey.



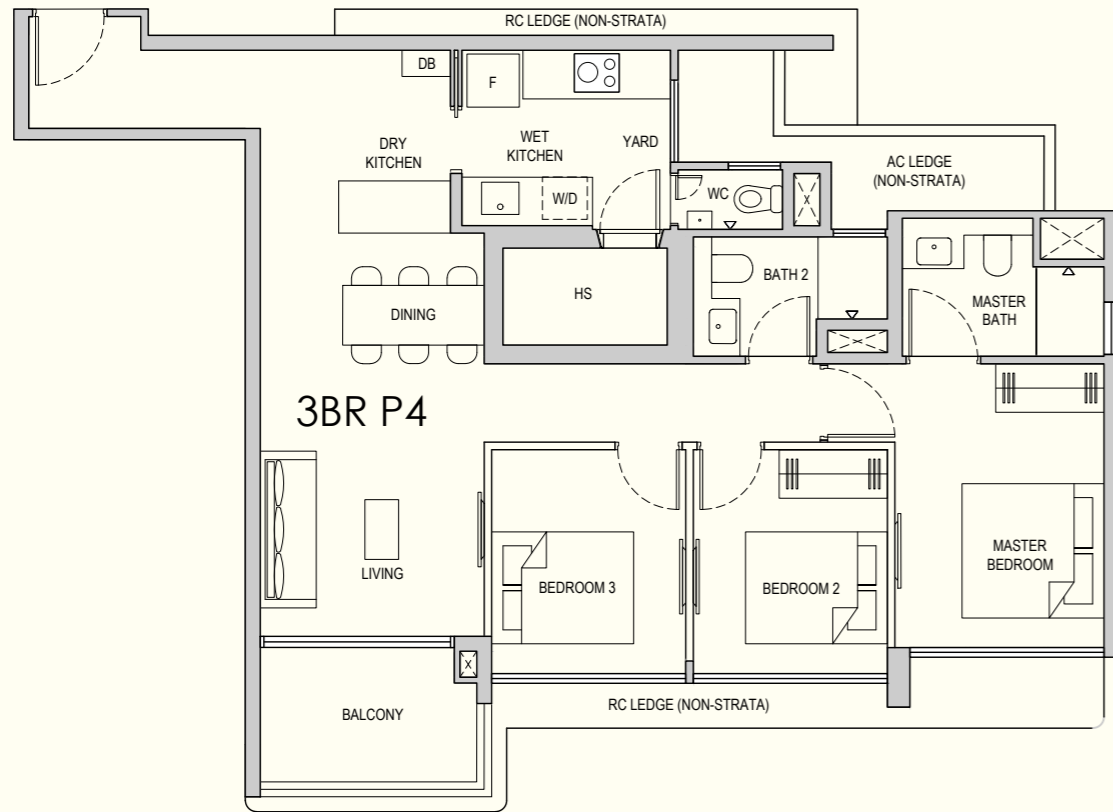
N
KEY PLAN
NOT TO SCALE

3-BEDROOM

TYPE 3BR P4
93 sqm / 1001 sqft

#01-03 to #08-03

#01-06 to #08-06* (Mirror)



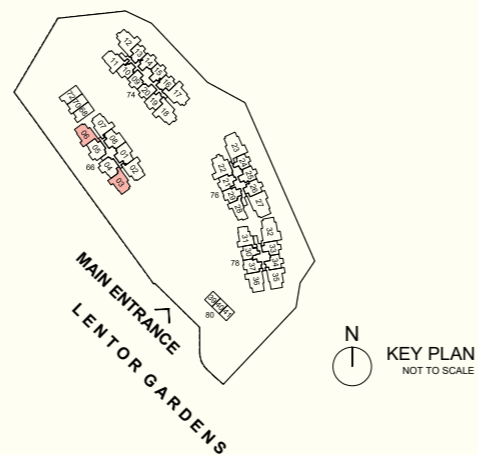
BP NO. :
A1805-00024-2025-BP01 - 18 MAR 2026
A1805-00024-2025-BP02 - 28 MAY 2026



- Legend
- F Fridge
 - W/D Washer cum Dryer
 - DB Distribution Board
 - HS Household Shelter
 - AC LEDGE Air-Conditioner Ledge (Excluded from Strata Area)
 - RC LEDGE Reinforced Concrete Ledge (Excluded from Strata Area)
 - ⊠ Void Space / Rainwater Down Pipe (Excluded from Strata Area)

Wall not allowed to be hacked or altered (including by way of drilling)

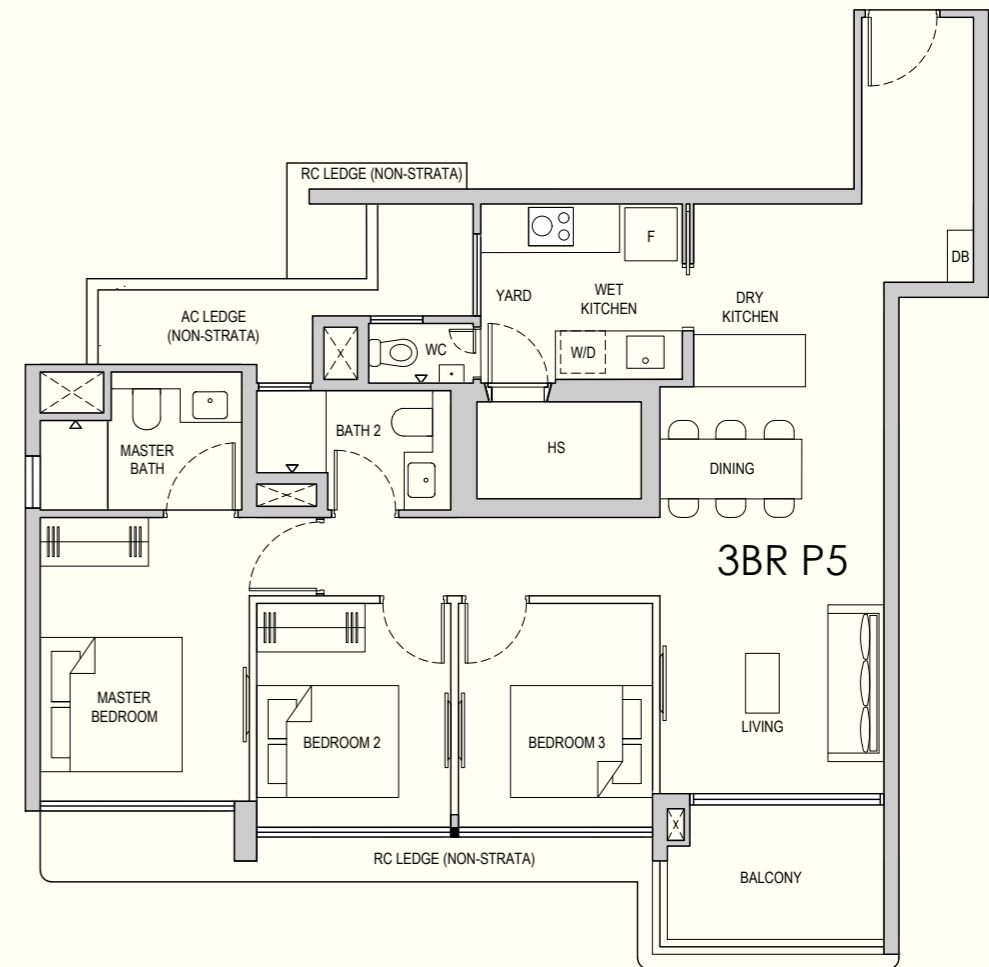
Area includes balcony, where applicable. All AC ledges and RC ledges are excluded from strata area. All RC ledges are non-load bearing. The plans are subjected to change as required by relevant authorities. All areas and measurements stated herein are approximate and subject to final survey.



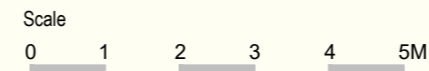
3-BEDROOM

TYPE 3BR P5
94 sqm / 1012 sqft

#01-11 to #08-11
#10-11 to #16-11



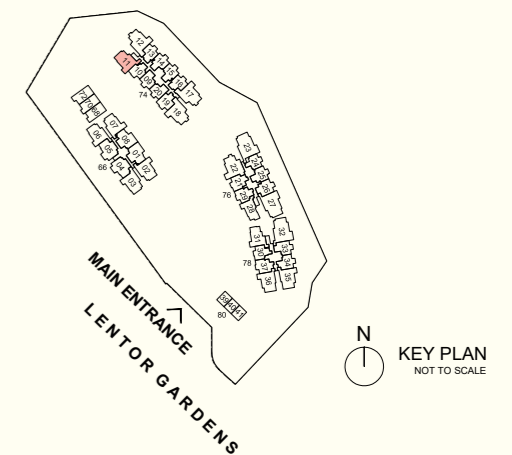
BP NO. :
A1805-00024-2025-BP01 - 18 MAR 2026
A1805-00024-2025-BP02 - 28 MAY 2026



- Legend
- F Fridge
 - W/D Washer cum Dryer
 - DB Distribution Board
 - HS Household Shelter
 - AC LEDGE Air-Conditioner Ledge (Excluded from Strata Area)
 - RC LEDGE Reinforced Concrete Ledge (Excluded from Strata Area)
 - ⊠ Void Space / Rainwater Down Pipe (Excluded from Strata Area)

Wall not allowed to be hacked or altered (including by way of drilling)

Area includes balcony, where applicable. All AC ledges and RC ledges are excluded from strata area. All RC ledges are non-load bearing. The plans are subjected to change as required by relevant authorities. All areas and measurements stated herein are approximate and subject to final survey.



3-BEDROOM

TYPE 3BR P6
93 sqm / 1001 sqft

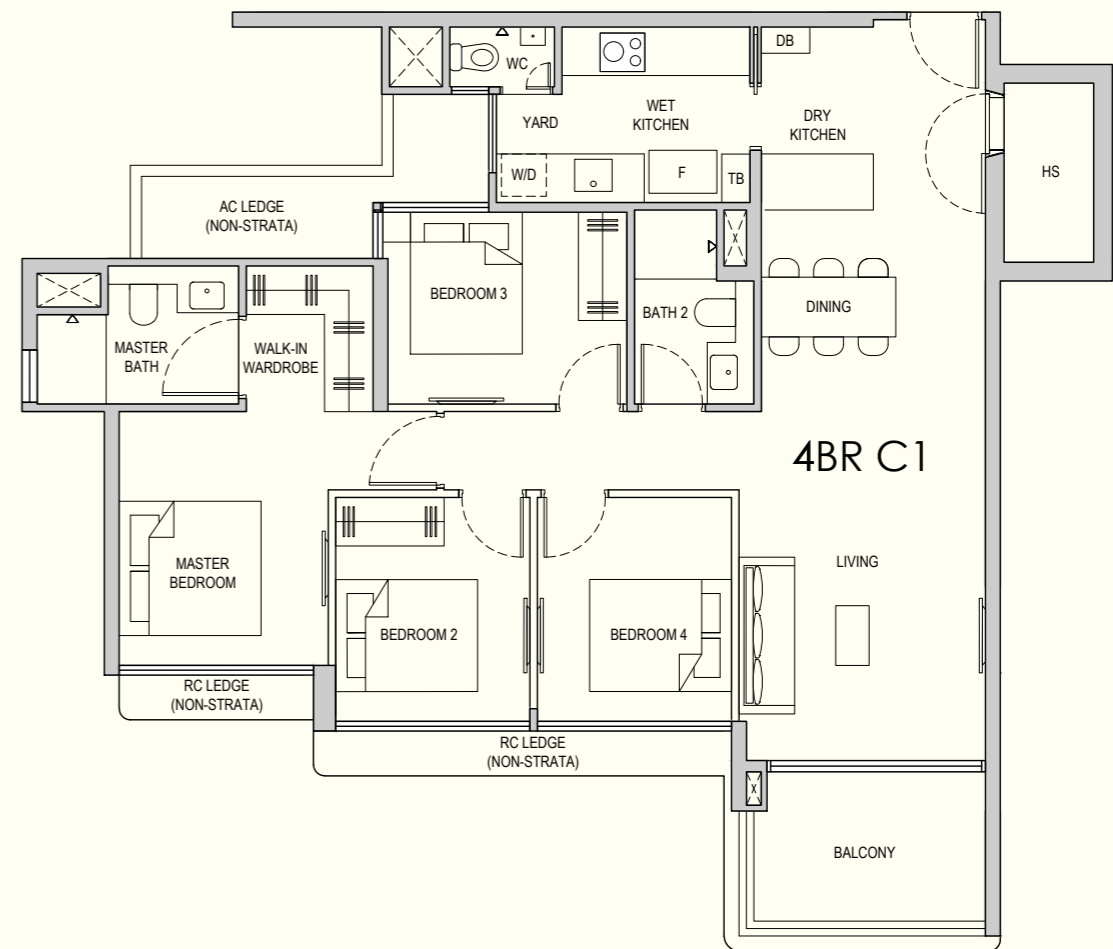
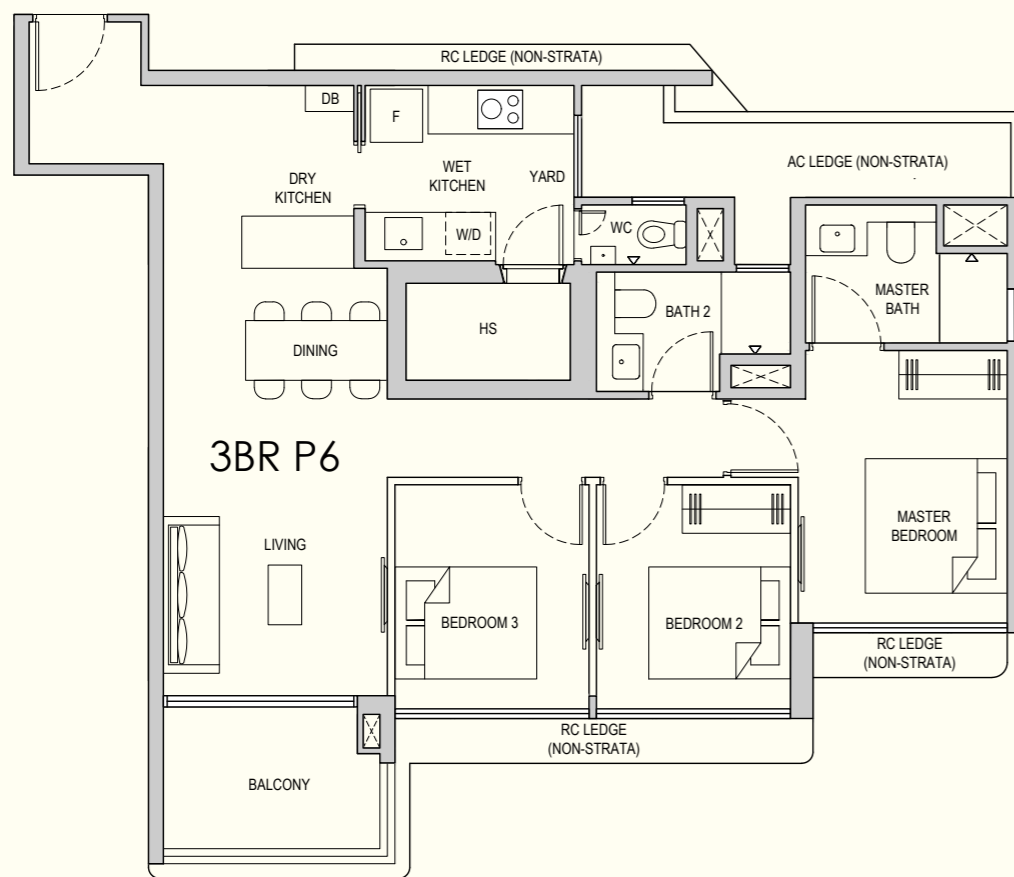
#01-35 to #08-35* (Mirror)
#10-35 to #16-35* (Mirror)

#01-36 to #08-36
#10-36 to #16-36

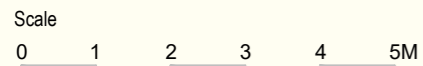
4-BEDROOM

TYPE 4BR C1
110 sqm / 1184 sqft

#01-22 to #08-22
#10-22 to #16-22



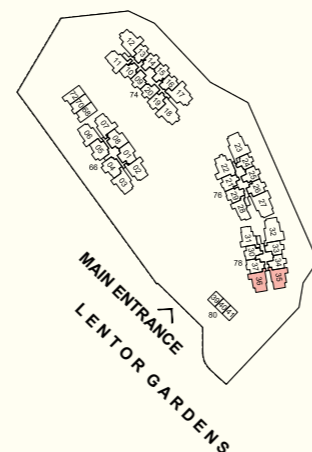
BP NO. :
A1805-00024-2025-BP01 - 18 MAR 2026
A1805-00024-2025-BP02 - 28 MAY 2026



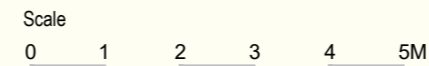
- Legend
- F Fridge
 - W/D Washer cum Dryer
 - DB Distribution Board
 - HS Household Shelter
 - AC LEDGE Air-Conditioner Ledge (Excluded from Strata Area)
 - RC LEDGE Reinforced Concrete Ledge (Excluded from Strata Area)
 - ⊠ Void Space / Rainwater Down Pipe (Excluded from Strata Area)

Wall not allowed to be hacked or altered (including by way of drilling)

Area includes balcony, where applicable. All AC ledges and RC ledges are excluded from strata area. All RC ledges are non-load bearing. The plans are subjected to change as required by relevant authorities. All areas and measurements stated herein are approximate and subject to final survey.



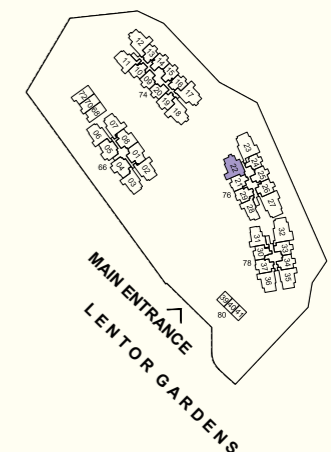
BP NO. :
A1805-00024-2025-BP01 - 18 MAR 2026
A1805-00024-2025-BP02 - 28 MAY 2026



- Legend
- F Fridge
 - W/D Washer cum Dryer
 - DB Distribution Board
 - HS Household Shelter
 - AC LEDGE Air-Conditioner Ledge (Excluded from Strata Area)
 - RC LEDGE Reinforced Concrete Ledge (Excluded from Strata Area)
 - ⊠ Void Space / Rainwater Down Pipe (Excluded from Strata Area)

Wall not allowed to be hacked or altered (including by way of drilling)

Area includes balcony, where applicable. All AC ledges and RC ledges are excluded from strata area. All RC ledges are non-load bearing. The plans are subjected to change as required by relevant authorities. All areas and measurements stated herein are approximate and subject to final survey.



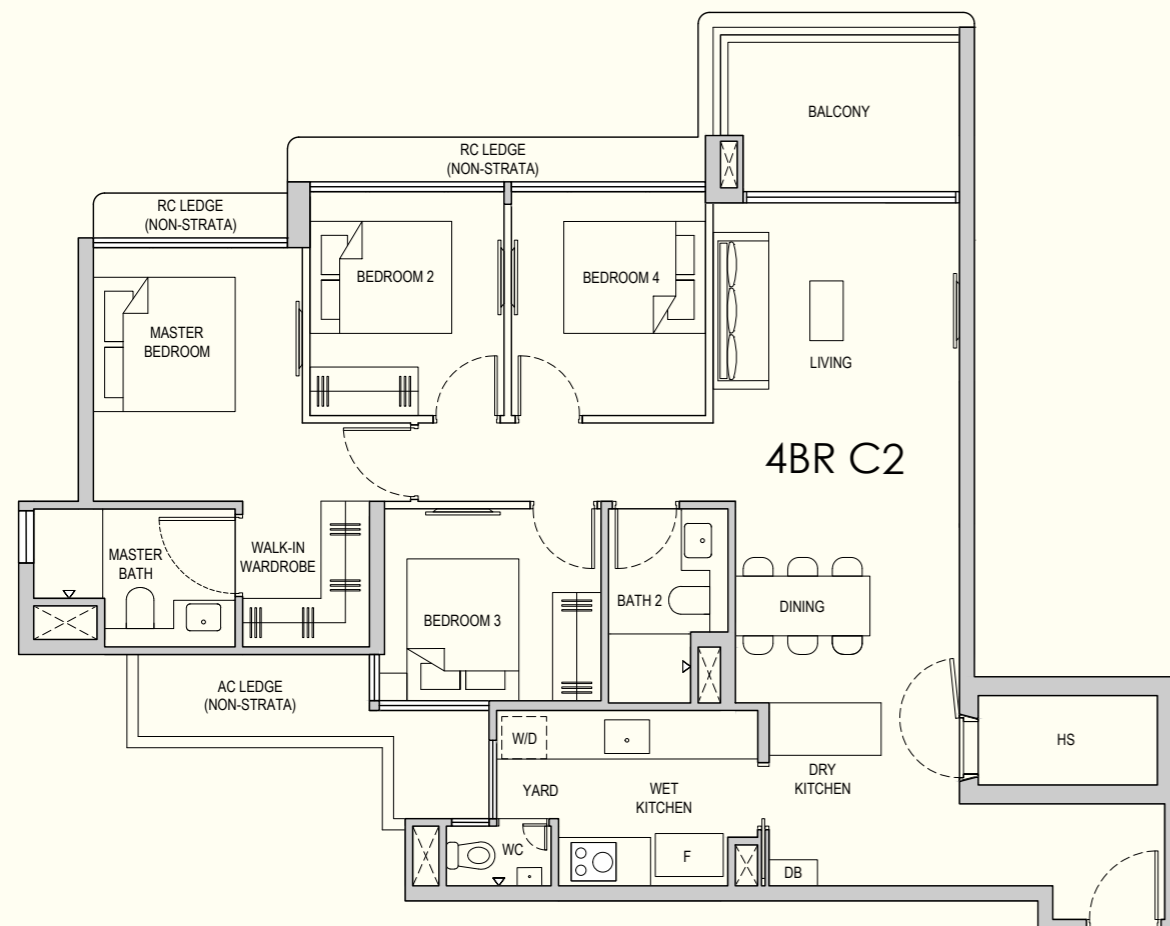
4-BEDROOM

TYPE 4BR C2
110 sqm / 1184 sqft

#01-12 to #08-12
#10-12 to #16-12

#01-17 to #08-17* (Mirror)
#10-17 to #16-17* (Mirror)

#01-18 to #08-18
#10-18 to #16-18



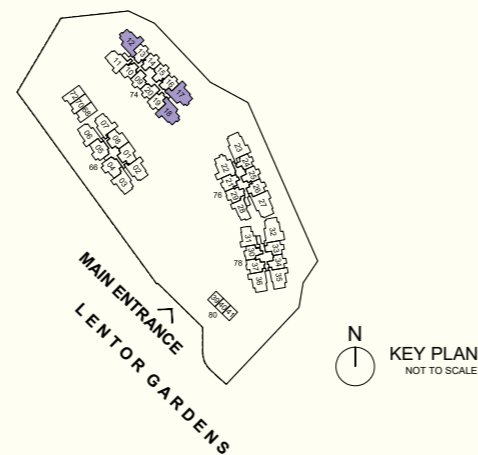
BP NO. :
A1805-00024-2025-BP01 - 18 MAR 2026
A1805-00024-2025-BP02 - 28 MAY 2026



- Legend
- F Fridge
 - W/D Washer cum Dryer
 - DB Distribution Board
 - HS Household Shelter
 - AC LEDGE Air-Conditioner Ledge (Excluded from Strata Area)
 - RC LEDGE Reinforced Concrete Ledge (Excluded from Strata Area)
 - ⊠ Void Space / Rainwater Down Pipe (Excluded from Strata Area)

Wall not allowed to be hacked or altered (including by way of drilling)

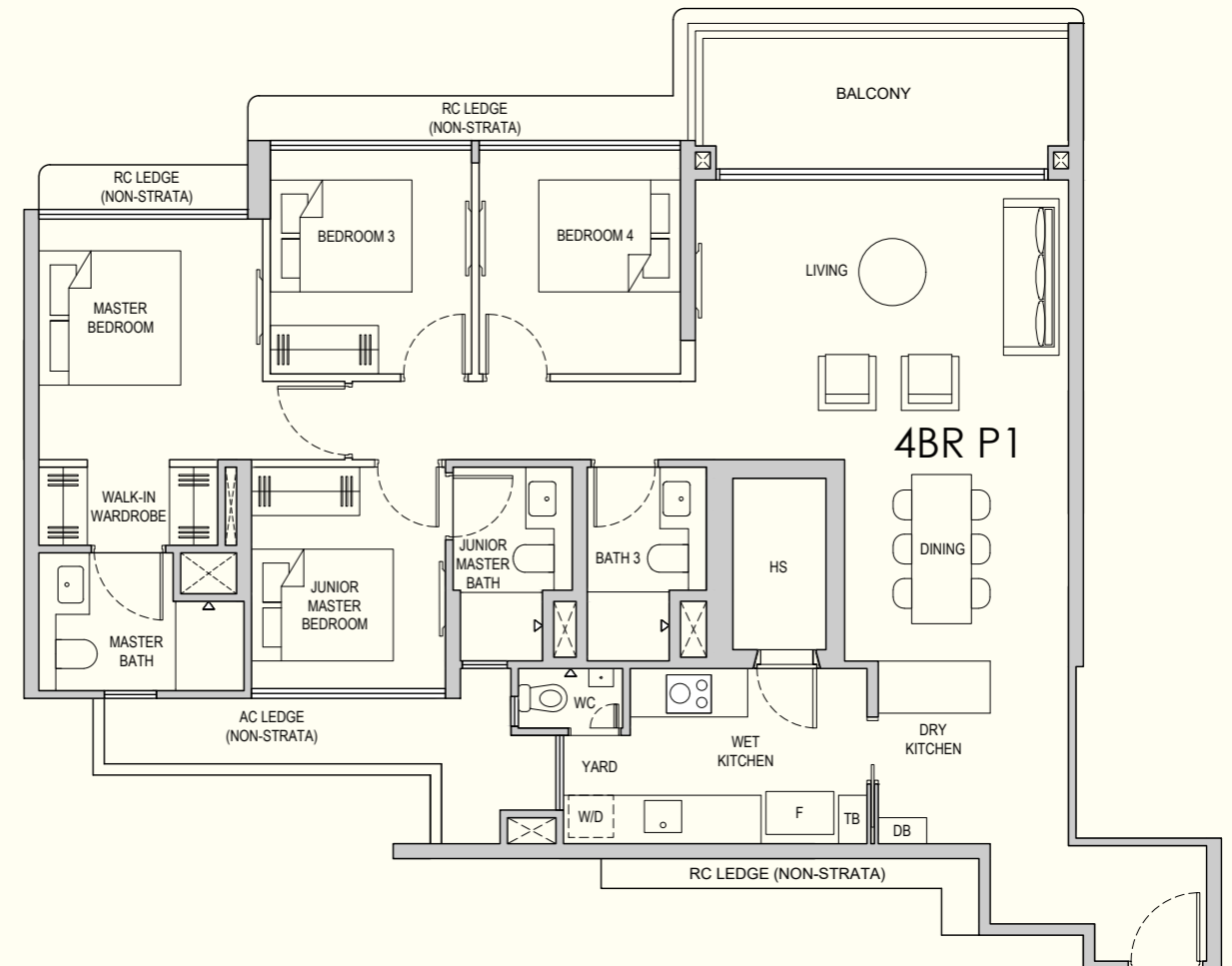
Area includes balcony, where applicable. All AC ledges and RC ledges are excluded from strata area. All RC ledges are non-load bearing. The plans are subjected to change as required by relevant authorities. All areas and measurements stated herein are approximate and subject to final survey.



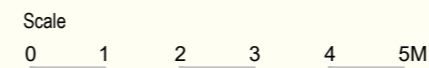
4-BEDROOM

TYPE 4BR P1
126 sqm / 1356 sqft

#01-32 to #08-32
#10-32 to #16-32



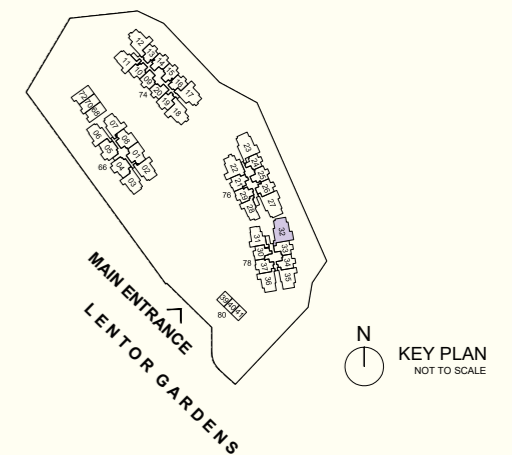
BP NO. :
A1805-00024-2025-BP01 - 18 MAR 2026
A1805-00024-2025-BP02 - 28 MAY 2026



- Legend
- F Fridge
 - W/D Washer cum Dryer
 - DB Distribution Board
 - HS Household Shelter
 - AC LEDGE Air-Conditioner Ledge (Excluded from Strata Area)
 - RC LEDGE Reinforced Concrete Ledge (Excluded from Strata Area)
 - ⊠ Void Space / Rainwater Down Pipe (Excluded from Strata Area)

Wall not allowed to be hacked or altered (including by way of drilling)

Area includes balcony, where applicable. All AC ledges and RC ledges are excluded from strata area. All RC ledges are non-load bearing. The plans are subjected to change as required by relevant authorities. All areas and measurements stated herein are approximate and subject to final survey.



4-BEDROOM

TYPE 4BR P2
125 sqm / 1346 sqft

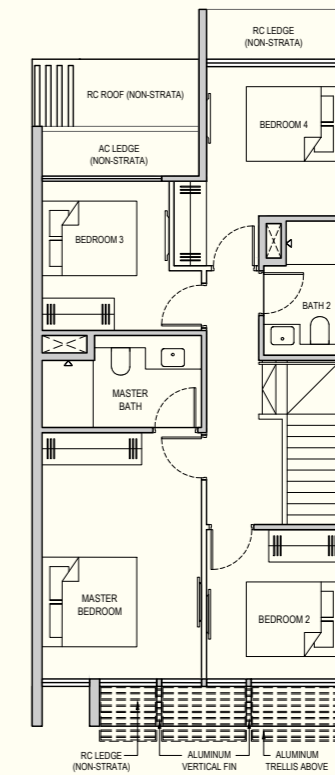
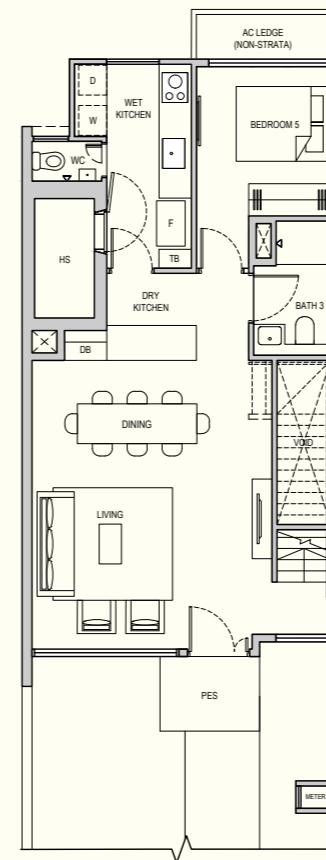
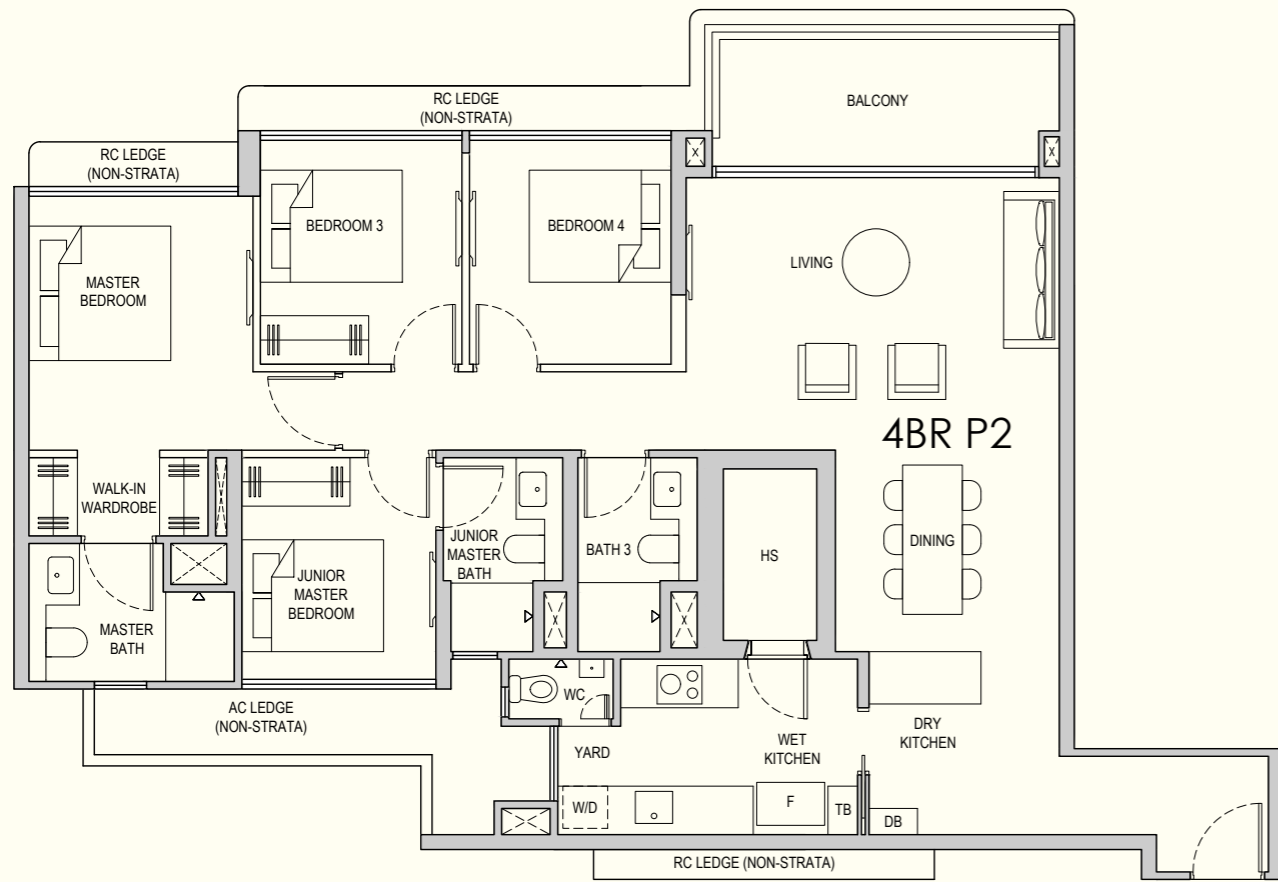
#01-23 to #08-23
#10-23 to #16-23

#01-27 to #08-27* (Mirror)
#10-27 to #16-27* (Mirror)

TERRACE

TERRACE 1
139 sqm / 1496 sqft

#72



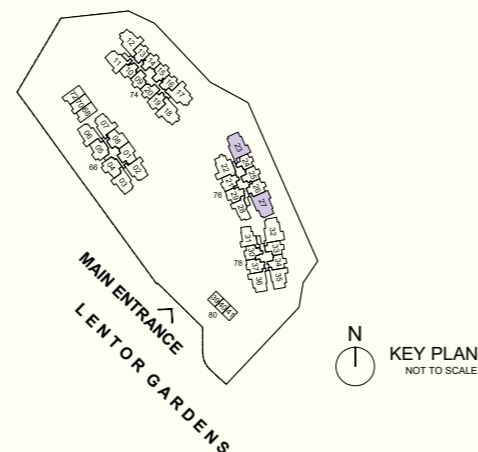
BP NO. :
A1805-00024-2025-BP01 - 18 MAR 2026
A1805-00024-2025-BP02 - 28 MAY 2026



- Legend
- F Fridge
 - W/D Washer cum Dryer
 - DB Distribution Board
 - HS Household Shelter
 - AC LEDGE Air-Conditioner Ledge (Excluded from Strata Area)
 - RC LEDGE Reinforced Concrete Ledge (Excluded from Strata Area)
 - ⊠ Void Space / Rainwater Down Pipe (Excluded from Strata Area)

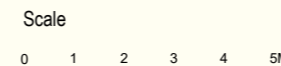
Wall not allowed to be hacked or altered (including by way of drilling)

Area includes balcony, where applicable. All AC ledges and RC ledges are excluded from strata area. All RC ledges are non-load bearing. The plans are subjected to change as required by relevant authorities. All areas and measurements stated herein are approximate and subject to final survey.



N
KEY PLAN
NOT TO SCALE

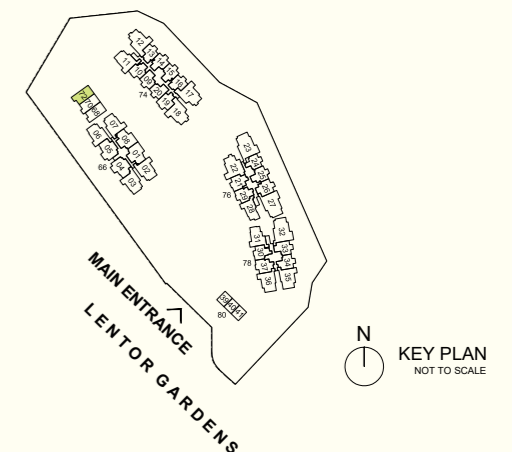
BP NO. :
A1805-00024-2025-BP01 - 18 MAR 2026
A1805-00024-2025-BP02 - 28 MAY 2026



- Legend
- F Fridge
 - W Washer
 - D Dryer
 - DB Distribution Board
 - AC LEDGE Air-Conditioner Ledge (Excluded from Strata Area)
 - RC LEDGE Reinforced Concrete Ledge (Excluded from Strata Area)
 - ⊠ Void Space / Rainwater Down Pipe (Excluded from Strata Area)

Wall not allowed to be hacked or altered (including by way of drilling)

Area includes balcony, where applicable. All AC ledges and RC ledges are excluded from strata area. All RC ledges are non-load bearing. The plans are subjected to change as required by relevant authorities. All areas and measurements stated herein are approximate and subject to final survey.

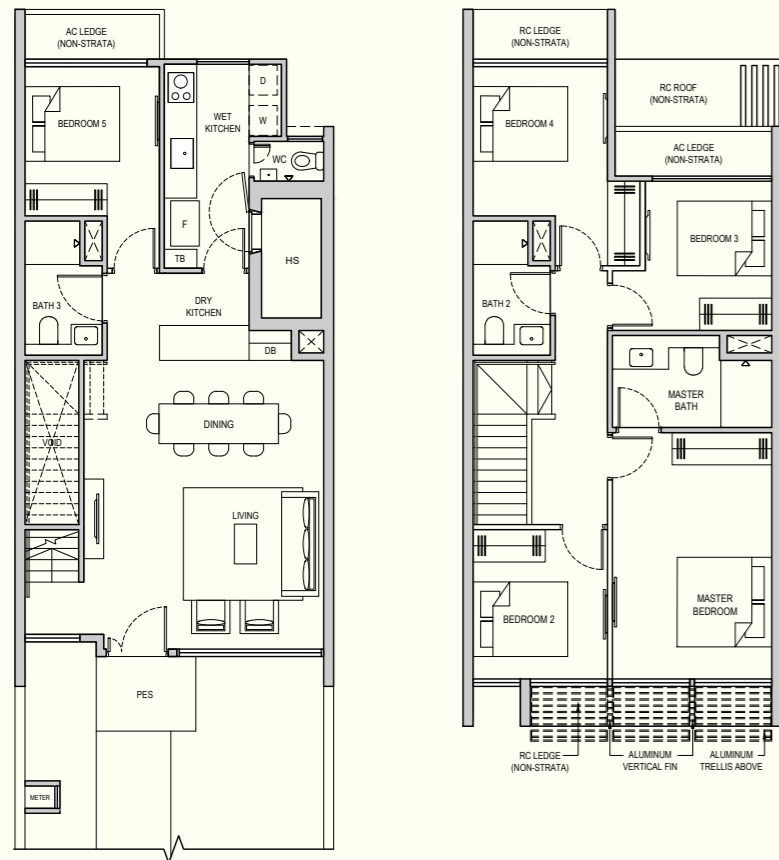


N
KEY PLAN
NOT TO SCALE

TERRACE

TERRACE 2
139 sqm / 1496 sqft

#70



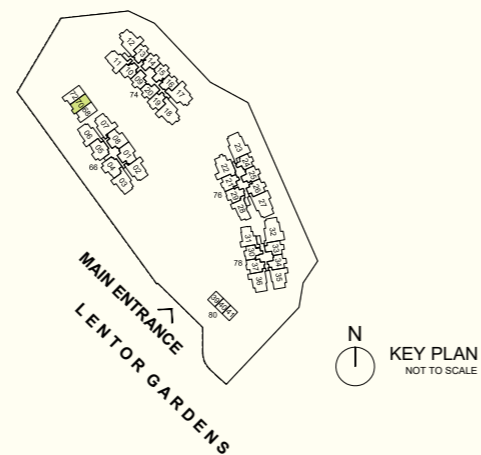
BP NO. :
A1805-00024-2025-BP01 - 18 MAR 2026
A1805-00024-2025-BP02 - 28 MAY 2026



- Legend
- F Fridge
 - W Washer
 - D Dryer
 - DB Distribution Board
 - AC LEDGE Air-Conditioner Ledge (Excluded from Strata Area)
 - RC LEDGE Reinforced Concrete Ledge (Excluded from Strata Area)
 - ⊠ Void Space / Rainwater Down Pipe (Excluded from Strata Area)

Wall not allowed to be hacked or altered (including by way of drilling)

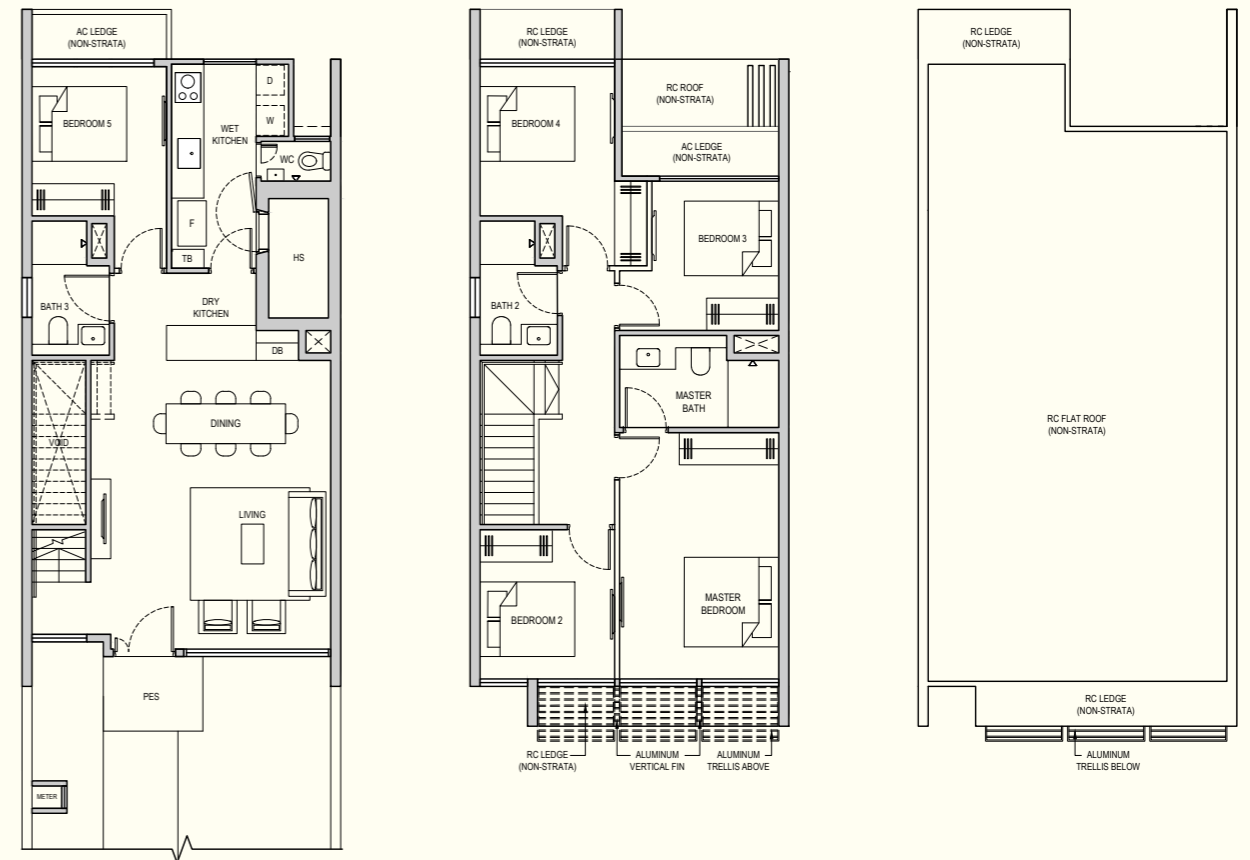
Area includes balcony, where applicable. All AC ledges and RC ledges are excluded from strata area. All RC ledges are non-load bearing. The plans are subjected to change as required by relevant authorities. All areas and measurements stated herein are approximate and subject to final survey.



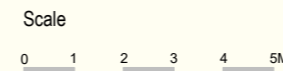
TERRACE

TERRACE 3
139 sqm / 1496 sqft

#68



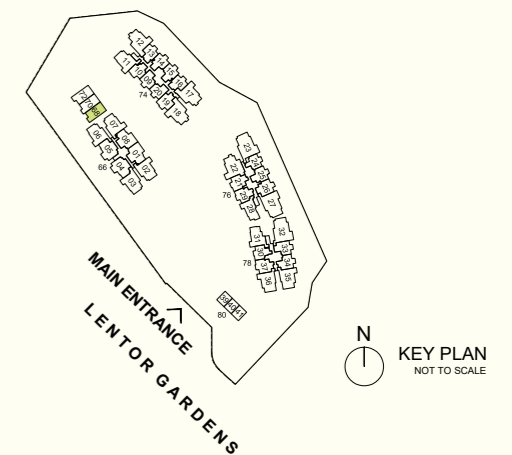
BP NO. :
A1805-00024-2025-BP01 - 18 MAR 2026
A1805-00024-2025-BP02 - 28 MAY 2026



- Legend
- F Fridge
 - W Washer
 - D Dryer
 - DB Distribution Board
 - AC LEDGE Air-Conditioner Ledge (Excluded from Strata Area)
 - RC LEDGE Reinforced Concrete Ledge (Excluded from Strata Area)
 - ⊠ Void Space / Rainwater Down Pipe (Excluded from Strata Area)

Wall not allowed to be hacked or altered (including by way of drilling)

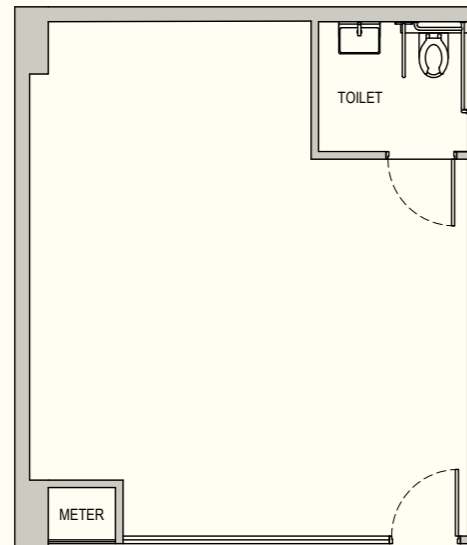
Area includes balcony, where applicable. All AC ledges and RC ledges are excluded from strata area. All RC ledges are non-load bearing. The plans are subjected to change as required by relevant authorities. All areas and measurements stated herein are approximate and subject to final survey.



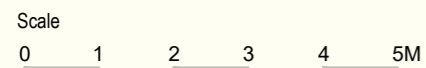
SHOP

SHOP 1
43 sqm / 463 sqft

#B1-39



BP NO. :
A1805-00024-2025-BP01 - 18 MAR 2026
A1805-00024-2025-BP02 - 28 MAY 2026

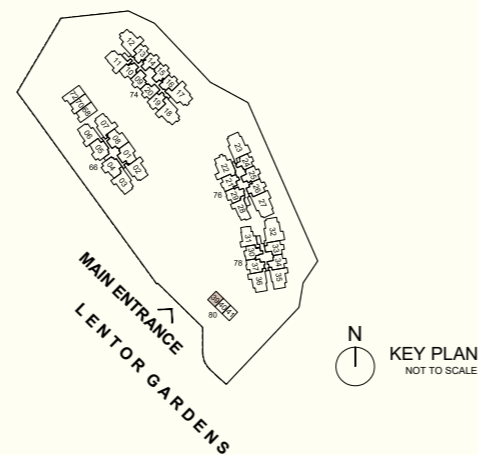


Legend

F	Fridge
W/D	Washer cum Dryer
DB	Distribution Board
HS	Household Shelter
AC LEDGE	Air-Conditioner Ledge (Excluded from Strata Area)
RC LEDGE	Reinforced Concrete Ledge (Excluded from Strata Area)
⊠	Void Space / Rainwater Down Pipe (Excluded from Strata Area)

Wall not allowed to be hacked or altered (including by way of drilling)

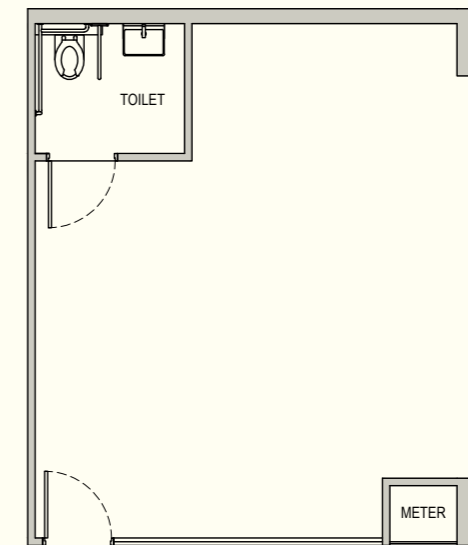
Area includes balcony, where applicable. All AC ledges and RC ledges are excluded from strata area. All RC ledges are non-load bearing. The plans are subjected to change as required by relevant authorities. All areas and measurements stated herein are approximate and subject to final survey.



SHOP

SHOP 2
43 sqm / 463 sqft

#B1-40



BP NO. :
A1805-00024-2025-BP01 - 18 MAR 2026
A1805-00024-2025-BP02 - 28 MAY 2026

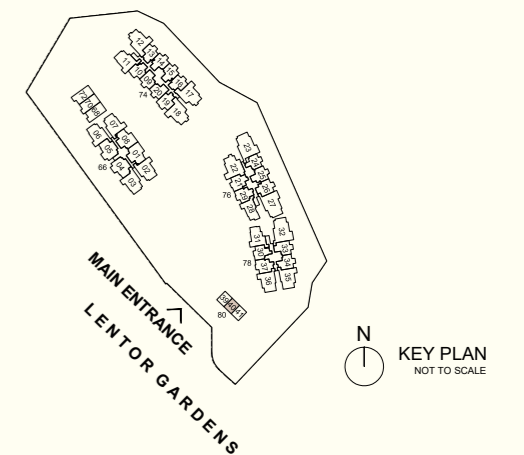


Legend

F	Fridge
W/D	Washer cum Dryer
DB	Distribution Board
HS	Household Shelter
AC LEDGE	Air-Conditioner Ledge (Excluded from Strata Area)
RC LEDGE	Reinforced Concrete Ledge (Excluded from Strata Area)
⊠	Void Space / Rainwater Down Pipe (Excluded from Strata Area)

Wall not allowed to be hacked or altered (including by way of drilling)

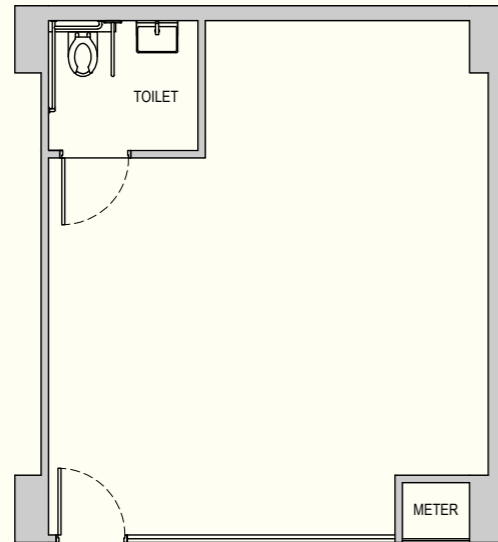
Area includes balcony, where applicable. All AC ledges and RC ledges are excluded from strata area. All RC ledges are non-load bearing. The plans are subjected to change as required by relevant authorities. All areas and measurements stated herein are approximate and subject to final survey.



SHOP

SHOP 3
43 sqm / 463 sqft

#B1-41



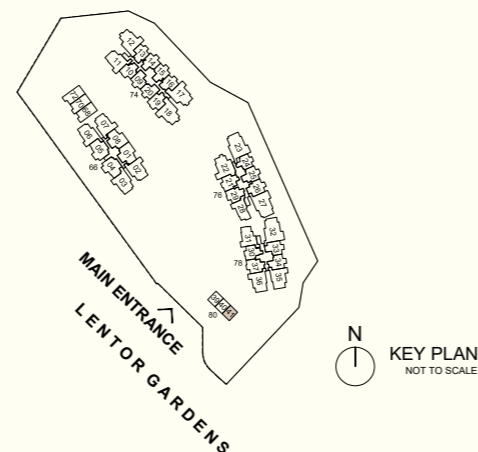
BP NO. :
A1805-00024-2025-BP01 - 18 MAR 2026
A1805-00024-2025-BP02 - 28 MAY 2026



Legend	
F	Fridge
W/D	Washer cum Dryer
DB	Distribution Board
HS	Household Shelter
AC LEDGE	Air-Conditioner Ledge (Excluded from Strata Area)
RC LEDGE	Reinforced Concrete Ledge (Excluded from Strata Area)
⊠	Void Space / Rainwater Down Pipe (Excluded from Strata Area)

Wall not allowed to be hacked or altered (including by way of drilling)

Area includes balcony, where applicable. All AC ledges and RC ledges are excluded from strata area. All RC ledges are non-load bearing. The plans are subjected to change as required by relevant authorities. All areas and measurements stated herein are approximate and subject to final survey.



CREATING A BETTER LANDSCAPE FOR TOMORROW

Established in 2011, the Kingsford Group ("the Group") is well known for its strong commitment to reliable quality in property development. Over the years, the Group has delivered a number of notable projects: the 512-unit Kingsford Hillview Peak, the 1,165-unit Kingsford Waterbay and the 1,862-unit Normanton Park.

Currently, the Group's ongoing projects are the 142-unit The Hill @ One-North, the 916-unit Chuan Park, the 937-unit One Marina Gardens, the 502-unit Lenton Gardens Residences and a 741-unit Telok Blangah Road.

In recognition of its excellence in property development, the Group has received numerous industry accolades, including the Singapore Prestige Brand Award-Global Brands in 2019; the Best Mega-Scale Condominium Development and Best Mega-Scale Landscape Architectural for Normanton Park in 2021 at the 11th PropertyGuru Asia Property Awards (Singapore); Best Transnational Developer, Best Mega-Scale Condominium Development for Chuan Park and Best Boutique Condominium Development for The Hill @ One-North in 2024 at the 14th PropertyGuru Asia Property Awards (Singapore); and the Best Mega-Scale Luxury Condominium Development for One Marina Gardens in 2025 at the 15th PropertyGuru Asia Property Awards (Singapore).



ONE MARINA GARDENS



CHUAN PARK



THE HILL @ ONE-NORTH



NORMANTON PARK



KINGSFORD HILLVIEW PEAK



KINGSFORD WATERBAY



Developer: Kingsford Lenton Project Pte Ltd (UEN No.: 202514965M) • Housing Developer's Licence No.: C1550 • Tenure of Land: 99 Years with effect from 7 July 2025 • Lot No.: Lot 05456V of Mukim 20 • Expected Date of Vacant Possession: 31 December 2030 • Expected Date of Legal Completion: 31 December 2033.

While reasonable care has been taken in the preparation of this brochure, neither the developer nor its agent(s) assume any responsibility for any inaccuracies or omissions. The statements, information and depictions in this brochure are not to be relied upon as statements or representations of fact, offers or warranties (whether expressly or impliedly) by the developer or the developer's agent(s) and they are not intended to form any part of the contract for the sale of the housing units. Visual representations such as renderings, illustrations, pictures and drawings are artist's impressions only and photographs are only decor suggestions and cannot be regarded as representations of fact. The brand, colour and model of all materials, fittings, equipment, finishes, installations and appliances to be supplied shall be provided subject to the developer's architect's selection, market availability and at the sole discretion of the developer.

All information, including but not limited to, equipment, materials, fittings, finishes, installations and appliances, descriptions, plans and specifications contained in this brochure are current at the time of publishing and are subject to such changes as are required by the relevant authorities or the developer.

OFFICIAL MARKETING AGENCY

Huttons

SINGAPORE'S LARGEST
PRIVATE REAL ESTATE AGENCY

ESTATE AGENT LICENCE NO. L3008899K