

1-Bedroom with Study

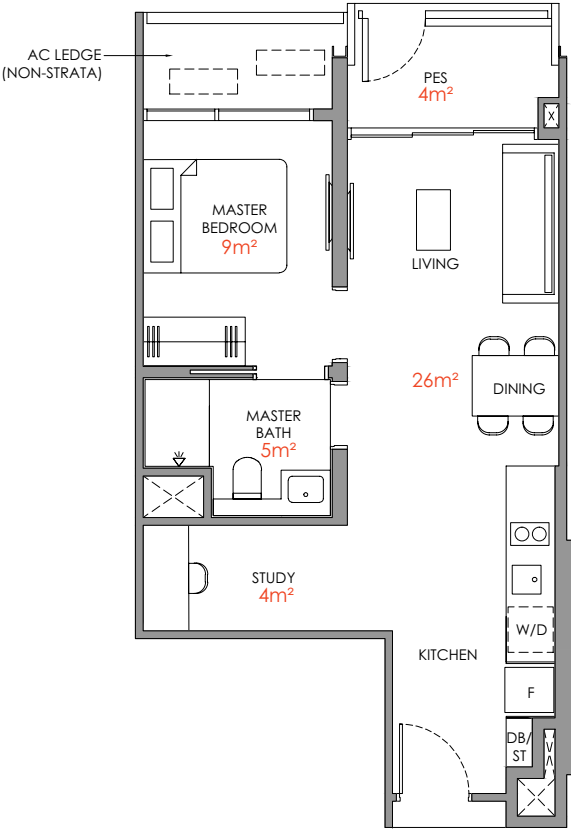
Type A1S - PES

48 sqm / 517 sqft

BLK 58
#01- 30

BLK 60
#01-39*

BLK 62
#01-46

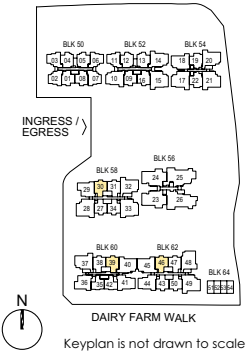


Legend (Where Applicable) :

- | | | |
|------------------------|------------------------|--------------------------------------|
| F - Fridge | WC - Water Closet | SC / ST - Shoe Cabinet / Store |
| W/D - Washer cum Dryer | HS - Household Shelter | DB / ST - Distribution Board / Store |
| TB - Tallboy | WD - Washer & Dryer | RC Ledge - Reinforced Concrete Ledge |
| * Mirror Image | WI - Wine Chiller | AC Ledge - Air-conditioner Ledge |

- Air-Conditioning condenser unit
- Wall not allowed to be hacked or altered (including by way of drilling)
- Services void space (excluded from strata area)
- Rainwater downpipe shaft space (excluded from strata area)

DISCLAIMER: Area includes balcony where applicable, and excludes among others, the air-conditioner (AC) ledge and RC - Reinforced Concrete Ledge. Please refer to the key plan for orientation. All floor plans are approximate measurements only and are subject to government re-survey. The Balcony shall not be enclosed unless with the approved balcony screen. The cost of screen and installation shall be borne by the Purchaser.



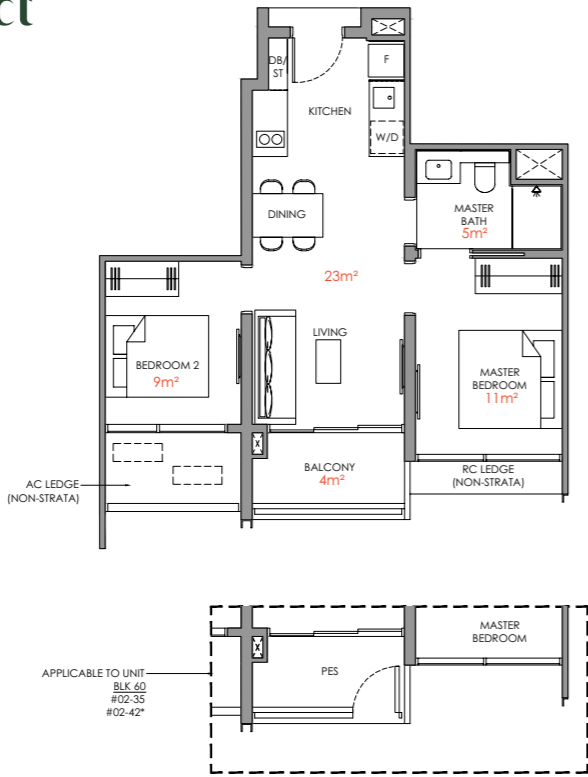
2-Bedroom Compact

Type B1
52 sqm / 560 sqft

BLK 60
#03-35 to #16-35
#03-42 to #16-42*

Type B1- PES
52 sqm / 560 sqft

BLK 60
#02-35
#02-42*



2-Bedroom with HS

Type B3H
64 sqm / 689 sqft

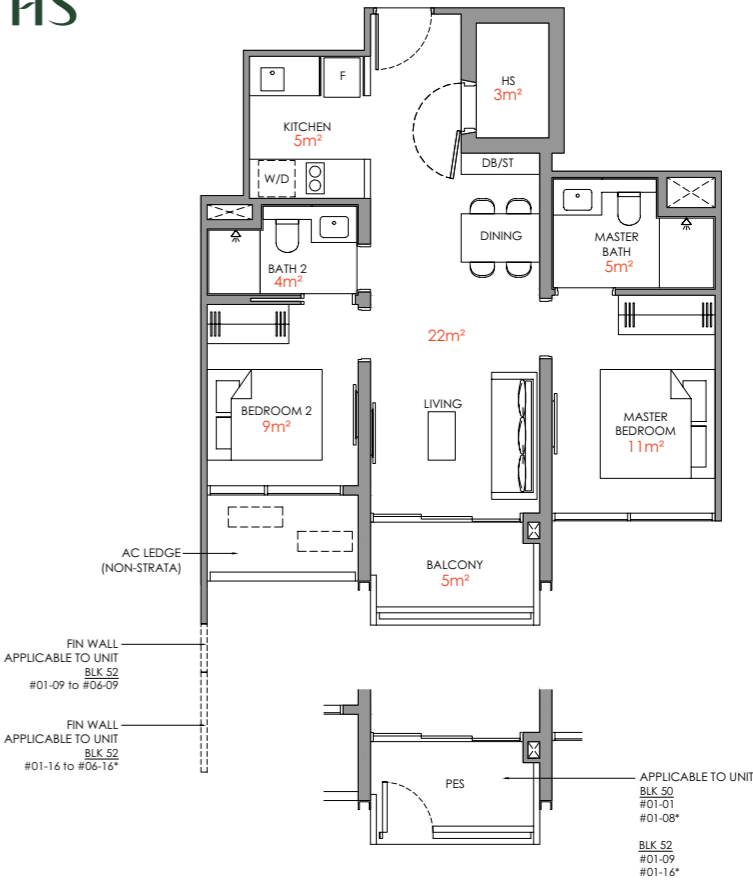
BLK 50
#02-01 to #06-01
#02-08 to #06-08*

BLK 52
#02-09 to #06-09
#02-16 to #06-16*

Type B3H - PES
64 sqm / 689 sqft

BLK 50
#01-01
#01-08*

BLK 52
#01-09
#01-16*



2-Bedroom Premium

Type B2P
60 sqm / 646 sqft

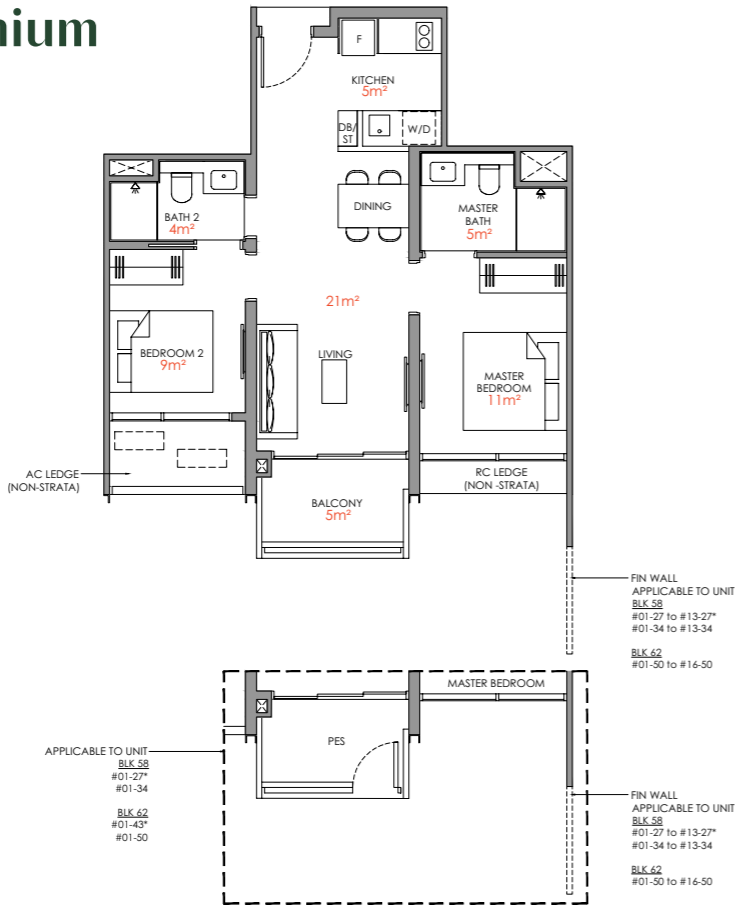
BLK 58
#02-27 to #13-27*
#02-34 to #13-34

BLK 62
#02-43 to #16-43*
#02-50 to #16-50

Type B2P - PES
60 sqm / 646 sqft

BLK 58
#01-27*
#01-34

BLK 62
#01-43*
#01-50



Legend (Where Applicable) :

F - Fridge	WC - Water Closet	SC / ST - Shoe Cabinet / Store
W/D - Washer cum Dryer	HS - Household Shelter	DB / ST - Distribution Board / Store
TB - Tallboy	WD - Washer & Dryer	RC Ledge - Reinforced Concrete Ledge
* Mirror Image	WI - Wine Chiller	AC Ledge - Air-conditioner Ledge

- Air-Conditioning condenser unit
- Wall not allowed to be hacked or altered (including by way of drilling)
- Services void space (excluded from strata area)
- Rainwater downpipe shaft space (excluded from strata area)

DISCLAIMER: Area includes balcony where applicable, and excludes among others, the air-conditioner (AC) ledge and RC - Reinforced Concrete Ledge. Please refer to the key plan for orientation. All floor plans are approximate measurements only and are subject to government re-survey. The Balcony shall not be enclosed unless with the approved balcony screen. The cost of screen and installation shall be borne by the Purchaser.



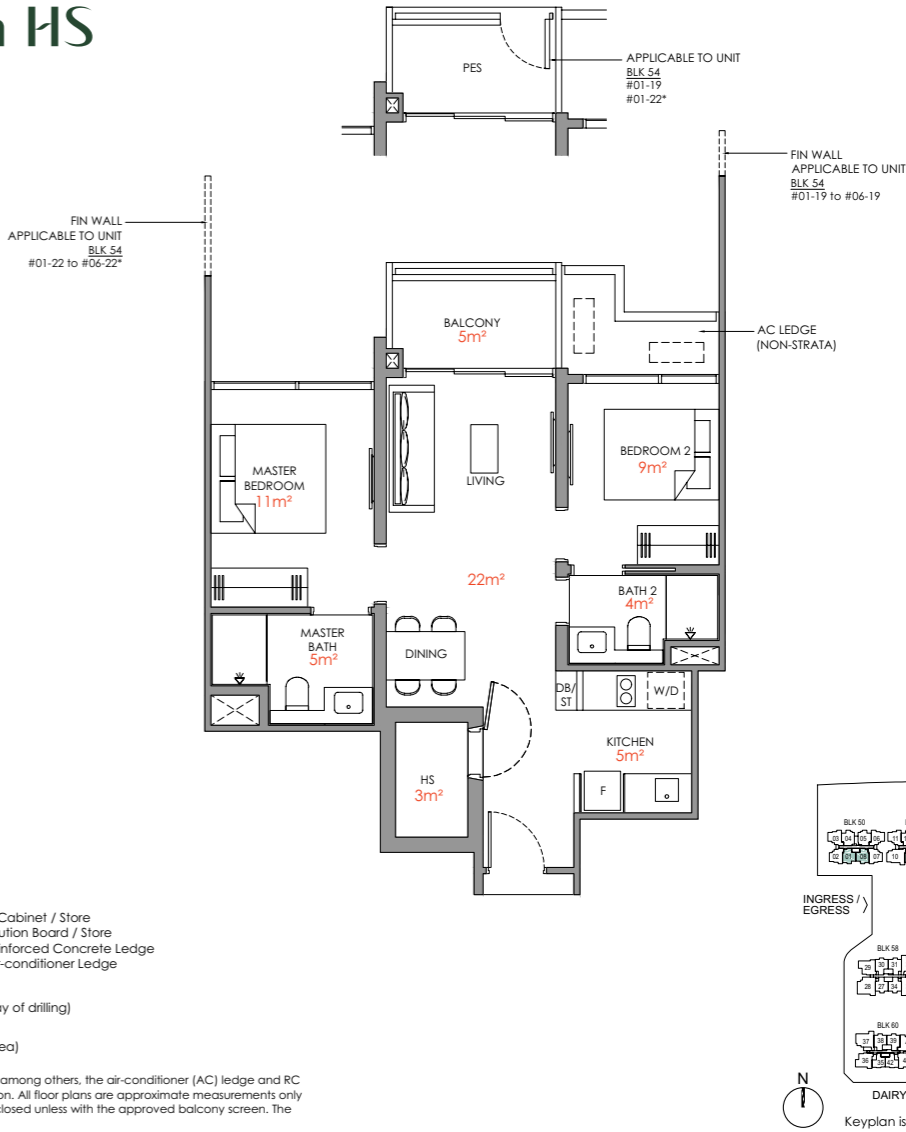
2-Bedroom with HS

Type B4H
64 sqm / 689 sqft

BLK 54
#02-19 to #06-19
#02-22 to #06-22*

Type B4H - PES
64 sqm / 689 sqft

BLK 54
#01-19
#01-22*

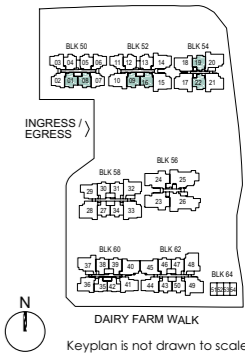


Legend (Where Applicable) :

F - Fridge	WC - Water Closet	SC / ST - Shoe Cabinet / Store
W/D - Washer cum Dryer	HS - Household Shelter	DB / ST - Distribution Board / Store
TB - Tallboy	WD - Washer & Dryer	RC Ledge - Reinforced Concrete Ledge
* Mirror Image	WI - Wine Chiller	AC Ledge - Air-conditioner Ledge

- Air-Conditioning condenser unit
- Wall not allowed to be hacked or altered (including by way of drilling)
- Services void space (excluded from strata area)
- Rainwater downpipe shaft space (excluded from strata area)

DISCLAIMER: Area includes balcony where applicable, and excludes among others, the air-conditioner (AC) ledge and RC - Reinforced Concrete Ledge. Please refer to the key plan for orientation. All floor plans are approximate measurements only and are subject to government re-survey. The Balcony shall not be enclosed unless with the approved balcony screen. The cost of screen and installation shall be borne by the Purchaser.



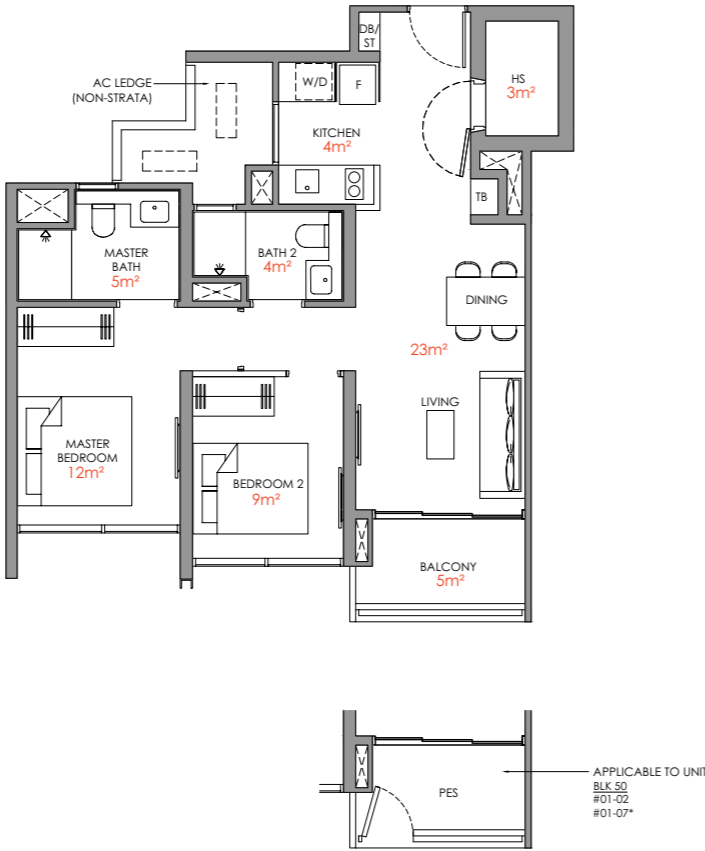
2-Bedroom with HS

Type B5H
65 sqm / 700 sqft

BLK 50
#02-02 to #06-02
#02-07 to #06-07*

Type B5H - PES
65 sqm / 700 sqft

BLK 50
#01-02
#01-07*



2-Bedroom with HS

Type B6H
65 sqm / 700 sqft

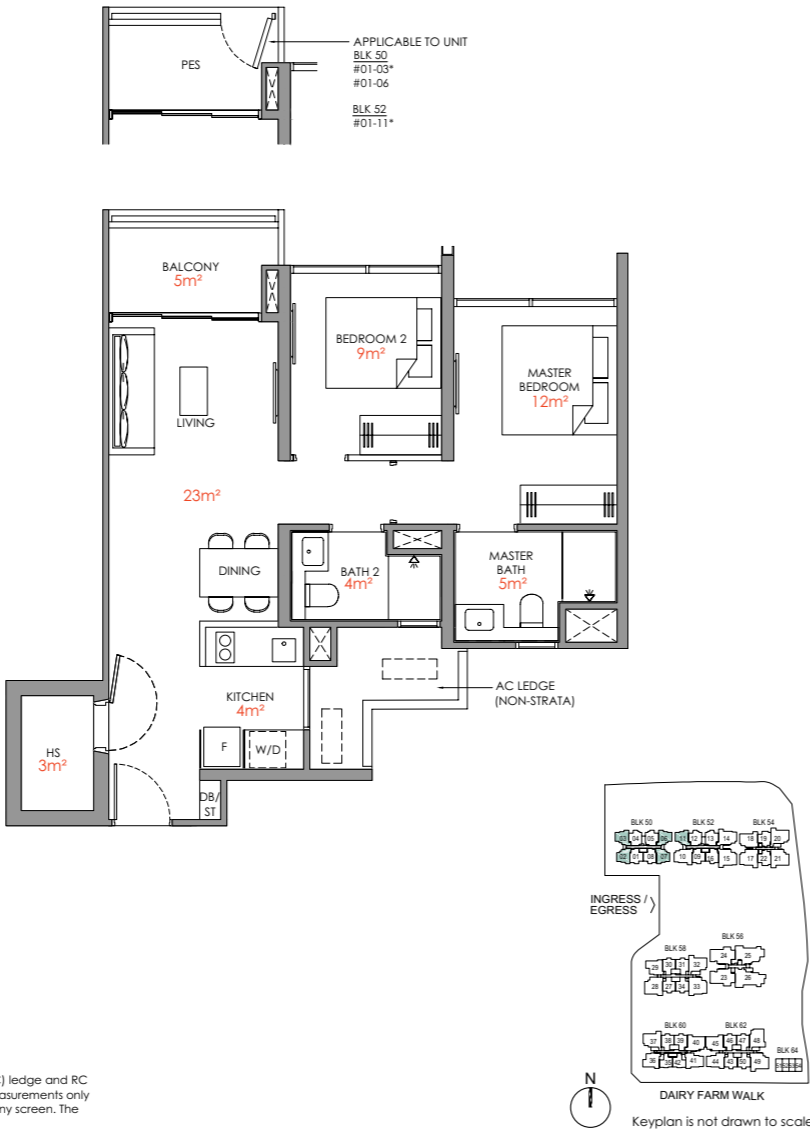
BLK 50
#02-03 to #06-03*
#02-06 to #06-06

BLK 52
#02-11 to #06-11*

Type B6H - PES
65 sqm / 700 sqft

BLK 50
#01-03*
#01-06

BLK 52
#01-11*



0 1 2 3 4 5M

Legend (Where Applicable) :

F - Fridge WC - Water Closet SC / ST - Shoe Cabinet / Store
W/D - Washer cum Dryer HS - Household Shelter DB / ST - Distribution Board / Store
TB - Tallboy WD - Washer & Dryer RC Ledge - Reinforced Concrete Ledge
* Mirror Image WI - Wine Chiller AC Ledge - Air-conditioner Ledge

--- Air-Conditioning condenser unit
--- Wall not allowed to be hacked or altered (including by way of drilling)
--- Services void space (excluded from strata area)
--- Rainwater downpipe shaft space (excluded from strata area)

DISCLAIMER: Area includes balcony where applicable, and excludes among others, the air-conditioner (AC) ledge and RC - Reinforced Concrete Ledge. Please refer to the key plan for orientation. All floor plans are approximate measurements only and are subject to government re-survey. The Balcony shall not be enclosed unless with the approved balcony screen. The cost of screen and installation shall be borne by the Purchaser.

2-Bedroom with HS + Study

Type B7H-S
67 sqm / 721 sqft

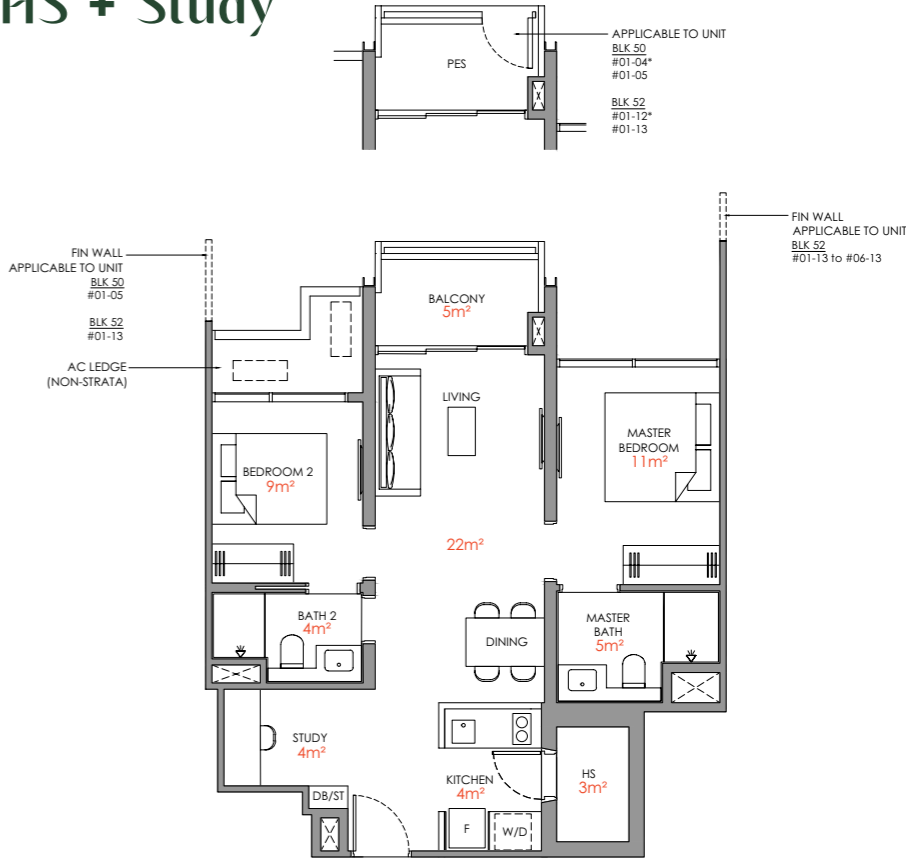
BLK 50
#02-04 to #06-04*
#02-05 to #06-05

BLK 52
#02-12 to #06-12*
#02-13 to #06-13

Type B7H-S - PES
67 sqm / 721 sqft

BLK 50
#01-04*
#01-05

BLK 52
#01-12*
#01-13



2-Bedroom with Study

Type B8S
67 sqm / 721 sqft

BLK 58
#02-30 to #13-30*
#02-31 to #13-31

BLK 60
#02-38 to #16-38*
#02-39 to #16-39

BLK 62
#02-46 to #16-46*
#02-47 to #16-47

Type B8S - PES
67 sqm / 721 sqft

BLK 58
#01-31

BLK 60
#01-38*

BLK 62
#01-47

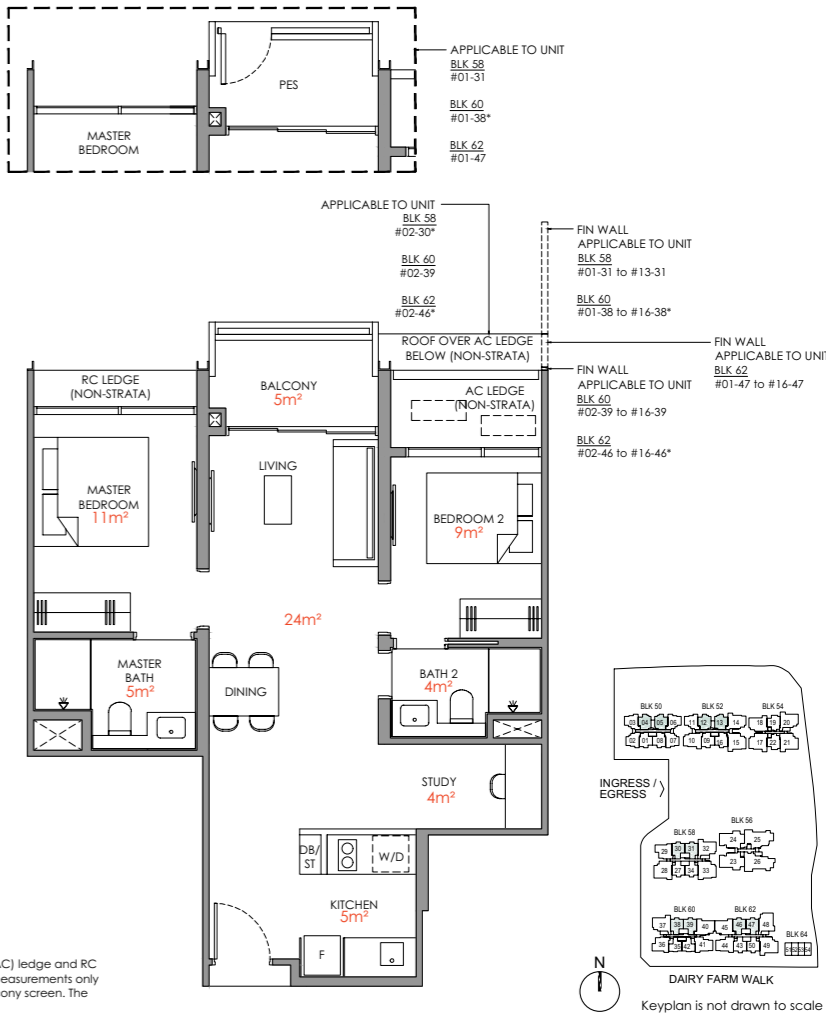
0 1 2 3 4 5M

Legend (Where Applicable) :

F - Fridge WC - Water Closet SC / ST - Shoe Cabinet / Store
W/D - Washer cum Dryer HS - Household Shelter DB / ST - Distribution Board / Store
TB - Tallboy WD - Washer & Dryer RC Ledge - Reinforced Concrete Ledge
* Mirror Image WI - Wine Chiller AC Ledge - Air-conditioner Ledge

--- Air-Conditioning condenser unit
--- Wall not allowed to be hacked or altered (including by way of drilling)
--- Services void space (excluded from strata area)
--- Rainwater downpipe shaft space (excluded from strata area)

DISCLAIMER: Area includes balcony where applicable, and excludes among others, the air-conditioner (AC) ledge and RC - Reinforced Concrete Ledge. Please refer to the key plan for orientation. All floor plans are approximate measurements only and are subject to government re-survey. The Balcony shall not be enclosed unless with the approved balcony screen. The cost of screen and installation shall be borne by the Purchaser.



3-Bedroom Compact

Type C1

76 sqm / 818 sqft

BLK 58
#02-29 to #13-29*

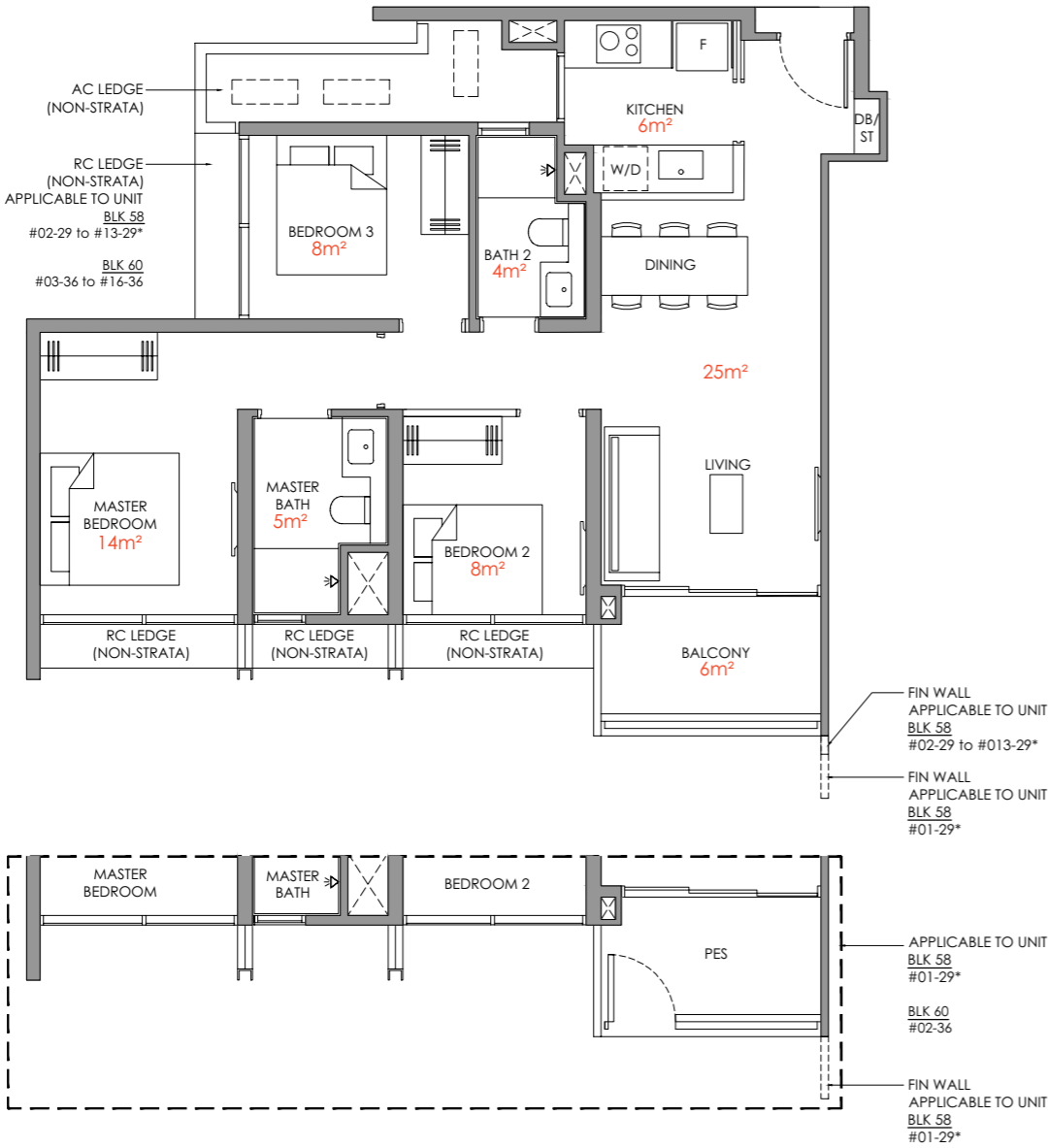
BLK 60
#03-36 to #16-36

Type C1 - PES

76 sqm / 818 sqft

BLK 58
#01-29*

BLK 60
#02-36



3-Bedroom Flexi

Type C2

81 sqm / 872 sqft

BLK 60
#03-41 to #16-41*

BLK 62
#02-44 to #16-44

Type C2 - PES

81 sqm / 872 sqft

BLK 60
#02-41*

BLK 62
#01-44



0 1 2 3 4 5M

Legend (Where Applicable) :

F - Fridge WC - Water Closet SC / ST - Shoe Cabinet / Store
W/D - Washer cum Dryer HS - Household Shelter DB / ST - Distribution Board / Store
TB - Tallboy WD - Washer & Dryer RC Ledge - Reinforced Concrete Ledge
* Mirror Image WI - Wine Chiller AC Ledge - Air-conditioner Ledge

□ Air-Conditioning condenser unit
▨ Wall not allowed to be hacked or altered (including by way of drilling)
⊞ Services void space (excluded from strata area)
⊞ Rainwater downpipe shaft space (excluded from strata area)

DISCLAIMER: Area includes balcony where applicable, and excludes among others, the air-conditioner (AC) ledge and RC - Reinforced Concrete Ledge. Please refer to the key plan for orientation. All floor plans are approximate measurements only and are subject to government re-survey. The Balcony shall not be enclosed unless with the approved balcony screen. The cost of screen and installation shall be borne by the Purchaser.



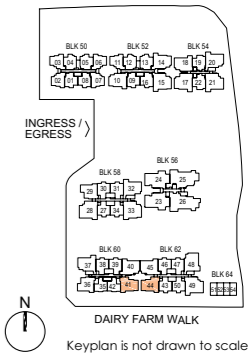
0 1 2 3 4 5M

Legend (Where Applicable) :

F - Fridge WC - Water Closet SC / ST - Shoe Cabinet / Store
W/D - Washer cum Dryer HS - Household Shelter DB / ST - Distribution Board / Store
TB - Tallboy WD - Washer & Dryer RC Ledge - Reinforced Concrete Ledge
* Mirror Image WI - Wine Chiller AC Ledge - Air-conditioner Ledge

□ Air-Conditioning condenser unit
▨ Wall not allowed to be hacked or altered (including by way of drilling)
⊞ Services void space (excluded from strata area)
⊞ Rainwater downpipe shaft space (excluded from strata area)

DISCLAIMER: Area includes balcony where applicable, and excludes among others, the air-conditioner (AC) ledge and RC - Reinforced Concrete Ledge. Please refer to the key plan for orientation. All floor plans are approximate measurements only and are subject to government re-survey. The Balcony shall not be enclosed unless with the approved balcony screen. The cost of screen and installation shall be borne by the Purchaser.



3-Bedroom Premium

Type C3P
93 sqm / 1001 sqft

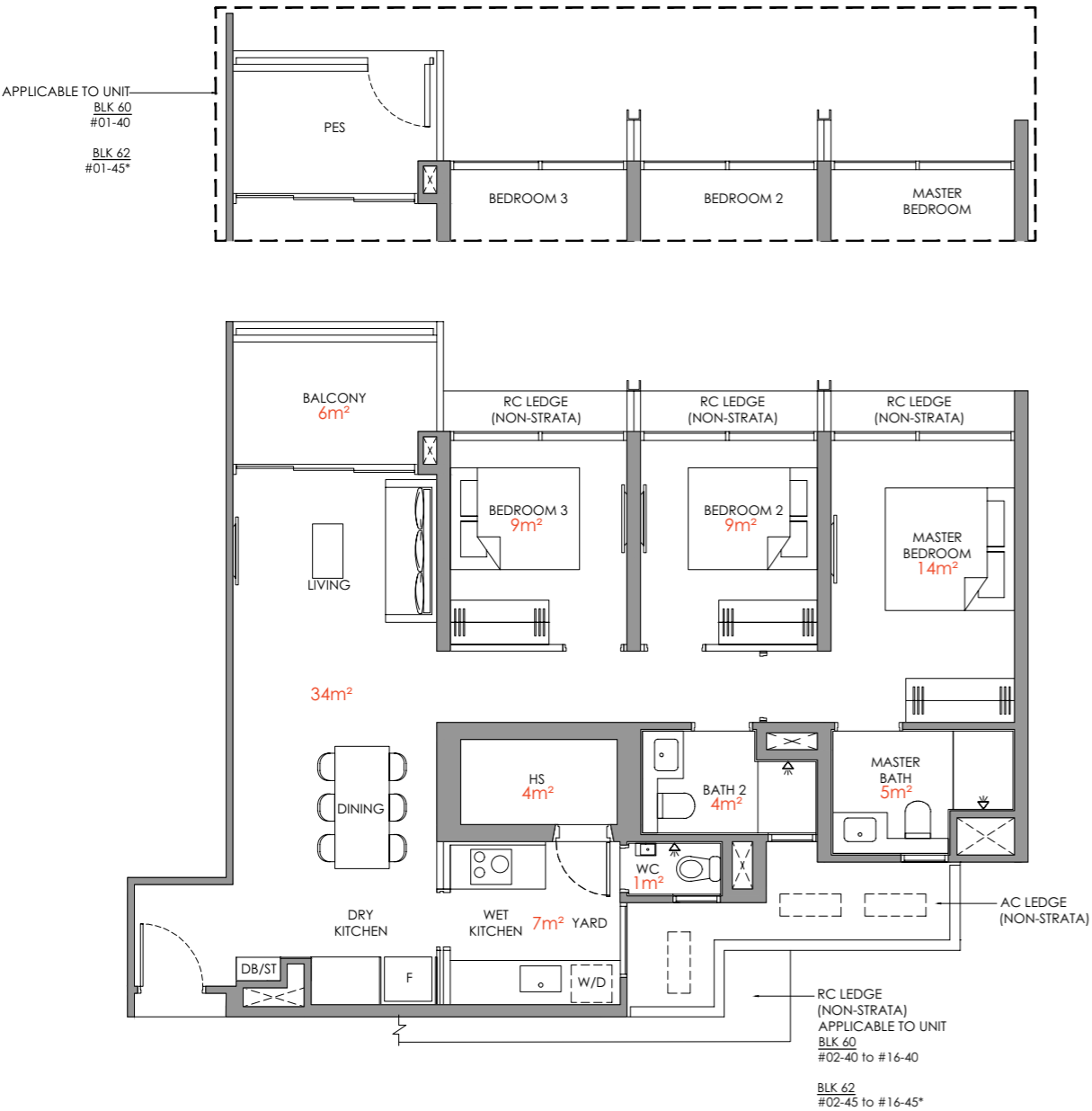
BLK 60
#02-40 to #16-40

BLK 62
#02-45 to #16-45*

Type C3P - PES
93 sqm / 1001 sqft

BLK 60
#01-40

BLK 62
#01-45*

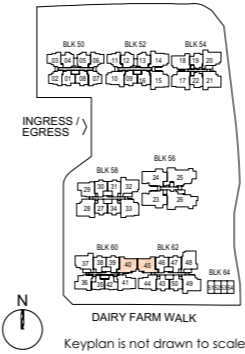


Legend (Where Applicable) :

F - Fridge	WC - Water Closet	SC / ST - Shoe Cabinet / Store
W/D - Washer cum Dryer	HS - Household Shelter	DB / ST - Distribution Board / Store
TB - Tallboy	WD - Washer & Dryer	RC Ledge - Reinforced Concrete Ledge
* Mirror Image	WI - Wine Chiller	AC Ledge - Air-conditioner Ledge

--- Air-Conditioning condenser unit
--- Wall not allowed to be hacked or altered (including by way of drilling)
--- Services void space (excluded from strata area)
--- Rainwater downpipe shaft space (excluded from strata area)

DISCLAIMER: Area includes balcony where applicable, and excludes among others, the air-conditioner (AC) ledge and RC - Reinforced Concrete Ledge. Please refer to the key plan for orientation. All floor plans are approximate measurements only and are subject to government re-survey. The Balcony shall not be enclosed unless with the approved balcony screen. The cost of screen and installation shall be borne by the Purchaser.



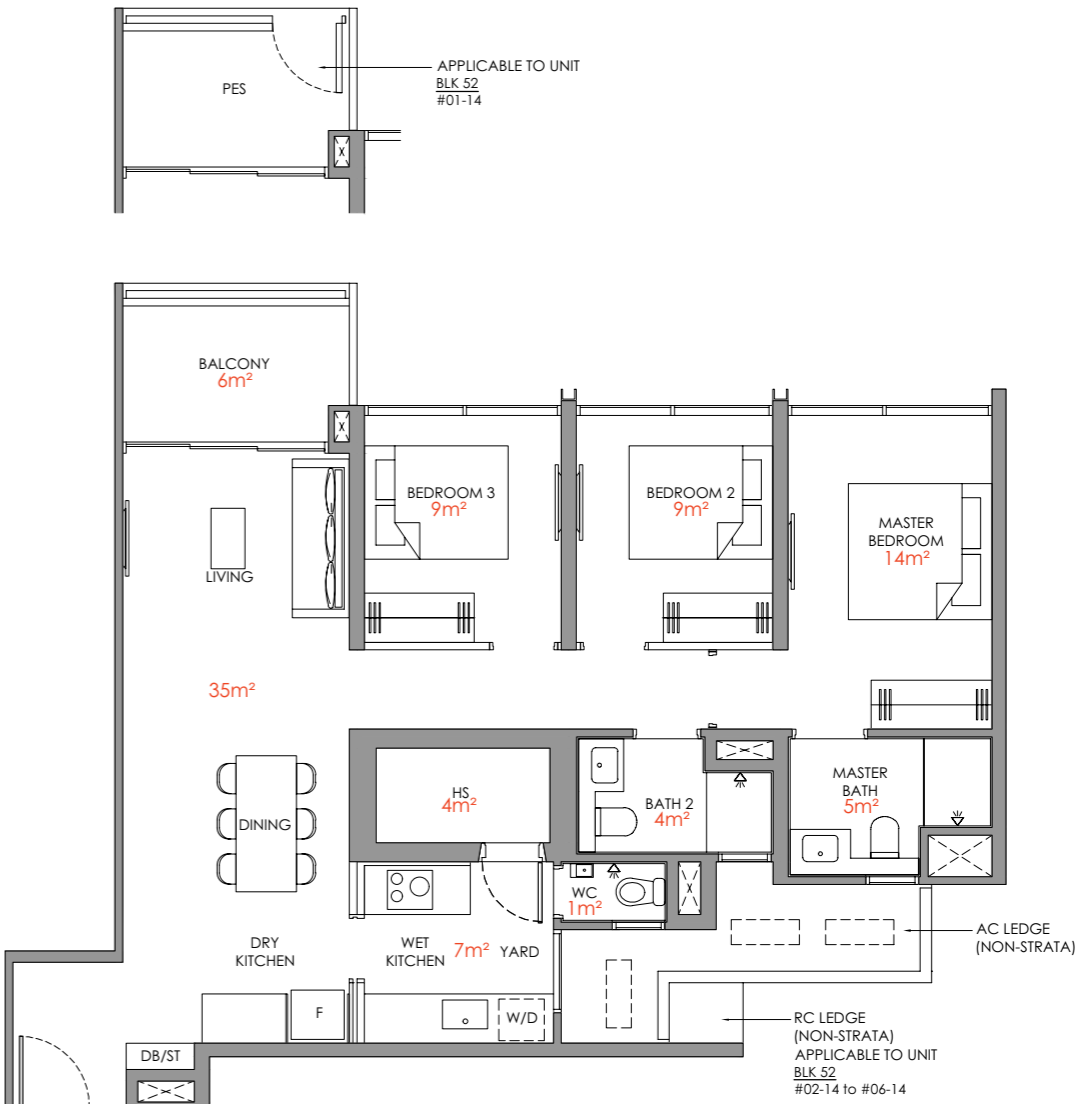
3-Bedroom Premium

Type C4P
94 sqm / 1012 sqft

BLK 52
#02-14 to #06-14

Type C4P - PES
94 sqm / 1012 sqft

BLK 52
#01-14

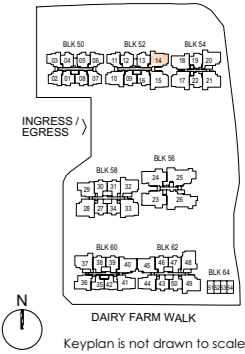


Legend (Where Applicable) :

F - Fridge	WC - Water Closet	SC / ST - Shoe Cabinet / Store
W/D - Washer cum Dryer	HS - Household Shelter	DB / ST - Distribution Board / Store
TB - Tallboy	WD - Washer & Dryer	RC Ledge - Reinforced Concrete Ledge
* Mirror Image	WI - Wine Chiller	AC Ledge - Air-conditioner Ledge

--- Air-Conditioning condenser unit
--- Wall not allowed to be hacked or altered (including by way of drilling)
--- Services void space (excluded from strata area)
--- Rainwater downpipe shaft space (excluded from strata area)

DISCLAIMER: Area includes balcony where applicable, and excludes among others, the air-conditioner (AC) ledge and RC - Reinforced Concrete Ledge. Please refer to the key plan for orientation. All floor plans are approximate measurements only and are subject to government re-survey. The Balcony shall not be enclosed unless with the approved balcony screen. The cost of screen and installation shall be borne by the Purchaser.



3-Bedroom Premium

Type C5P

95 sqm / 1023 sqft

BLK 54
#02-20 to #06-20*

BLK 58
#02-32 to #13-32*

BLK 60
#02-37 to #16-37

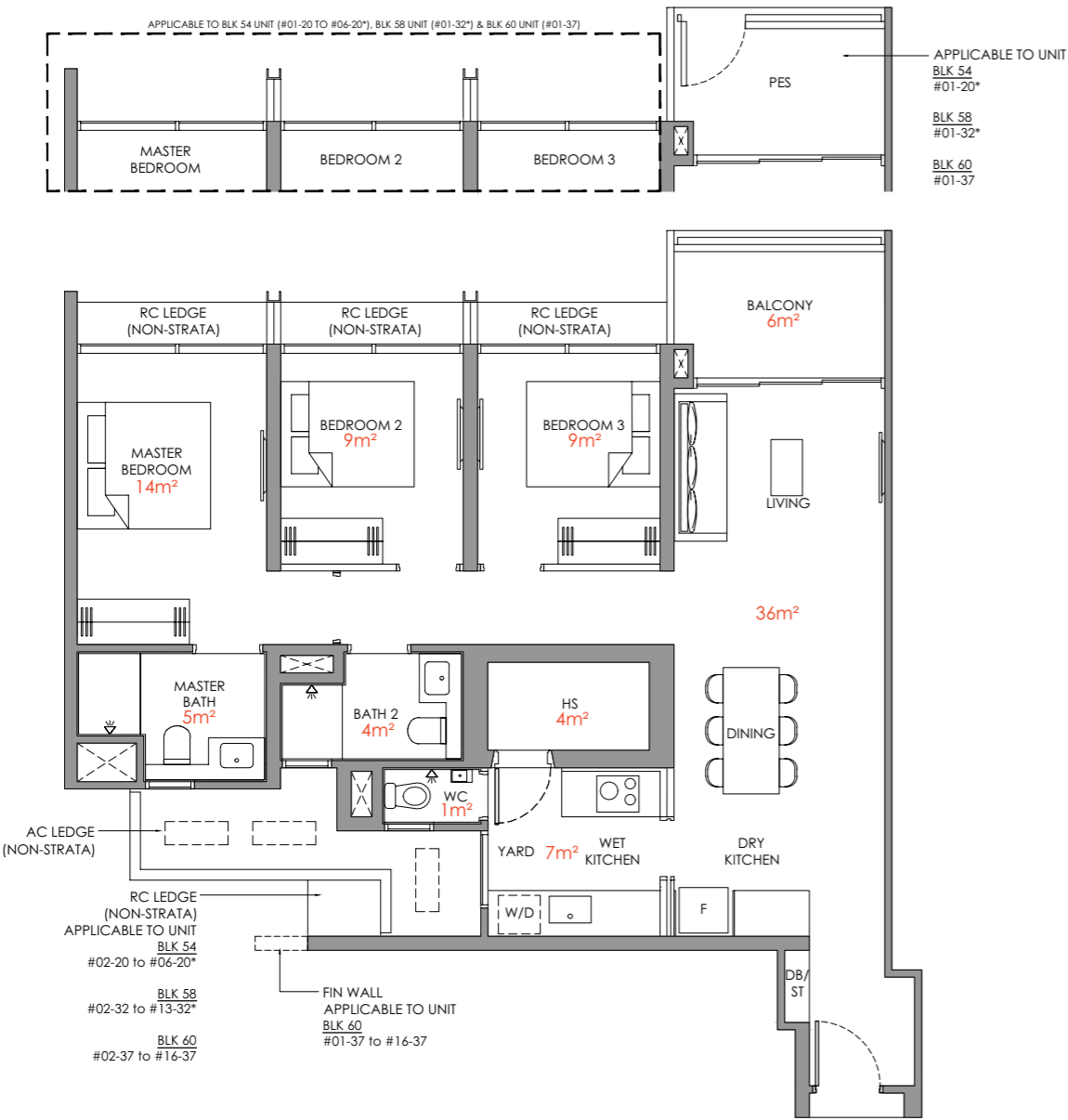
Type C5P - PES

95 sqm / 1023 sqft

BLK 54
#01-20*

BLK 58
#01-32*

BLK 60
#01-37



Legend (Where Applicable) :

F - Fridge	WC - Water Closet	SC / ST - Shoe Cabinet / Store
W/D - Washer cum Dryer	HS - Household Shelter	DB / ST - Distribution Board / Store
TB - Tallboy	WD - Washer & Dryer	RC Ledge - Reinforced Concrete Ledge
* Mirror Image	WI - Wine Chiller	AC Ledge - Air-conditioner Ledge

--- Air-Conditioning condenser unit
--- Wall not allowed to be hacked or altered (including by way of drilling)
--- Services void space (excluded from strata area)
--- Rainwater downpipe shaft space (excluded from strata area)

DISCLAIMER: Area includes balcony where applicable, and excludes among others, the air-conditioner (AC) ledge and RC ledge. Reinforced Concrete Ledge. Please refer to the key plan for orientation. All floor plans are approximate measurements only and are subject to government re-survey. The Balcony shall not be enclosed unless with the approved balcony screen. The cost of screen and installation shall be borne by the Purchaser.



3-Bedroom Premium

Type C6P

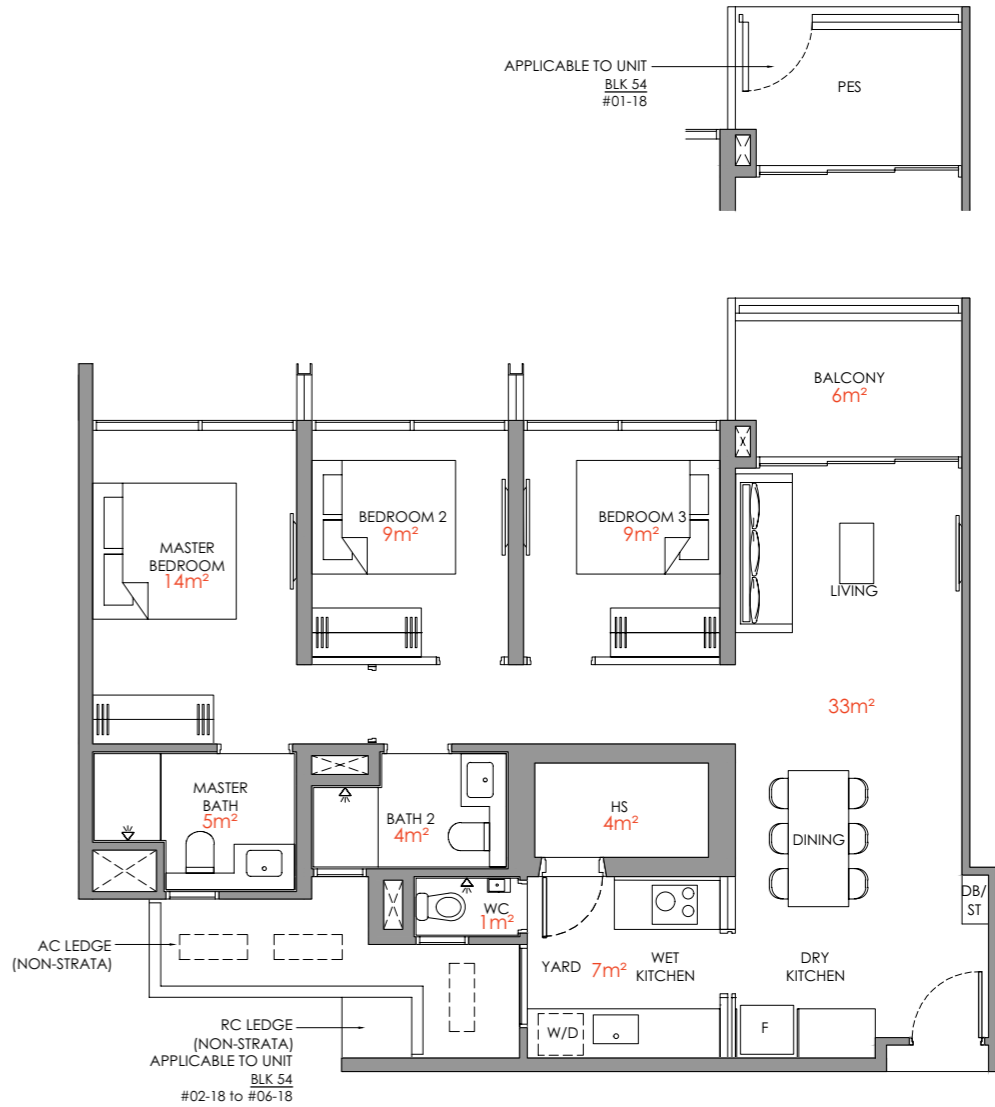
92 sqm / 990 sqft

BLK 54
#02-18 to #06-18

Type C6P - PES

92 sqm / 990 sqft

BLK 54
#01-18

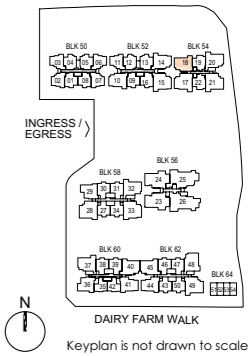


Legend (Where Applicable) :

F - Fridge	WC - Water Closet	SC / ST - Shoe Cabinet / Store
W/D - Washer cum Dryer	HS - Household Shelter	DB / ST - Distribution Board / Store
TB - Tallboy	WD - Washer & Dryer	RC Ledge - Reinforced Concrete Ledge
* Mirror Image	WI - Wine Chiller	AC Ledge - Air-conditioner Ledge

--- Air-Conditioning condenser unit
--- Wall not allowed to be hacked or altered (including by way of drilling)
--- Services void space (excluded from strata area)
--- Rainwater downpipe shaft space (excluded from strata area)

DISCLAIMER: Area includes balcony where applicable, and excludes among others, the air-conditioner (AC) ledge and RC ledge. Reinforced Concrete Ledge. Please refer to the key plan for orientation. All floor plans are approximate measurements only and are subject to government re-survey. The Balcony shall not be enclosed unless with the approved balcony screen. The cost of screen and installation shall be borne by the Purchaser.



3-Bedroom Premium

Type C7P

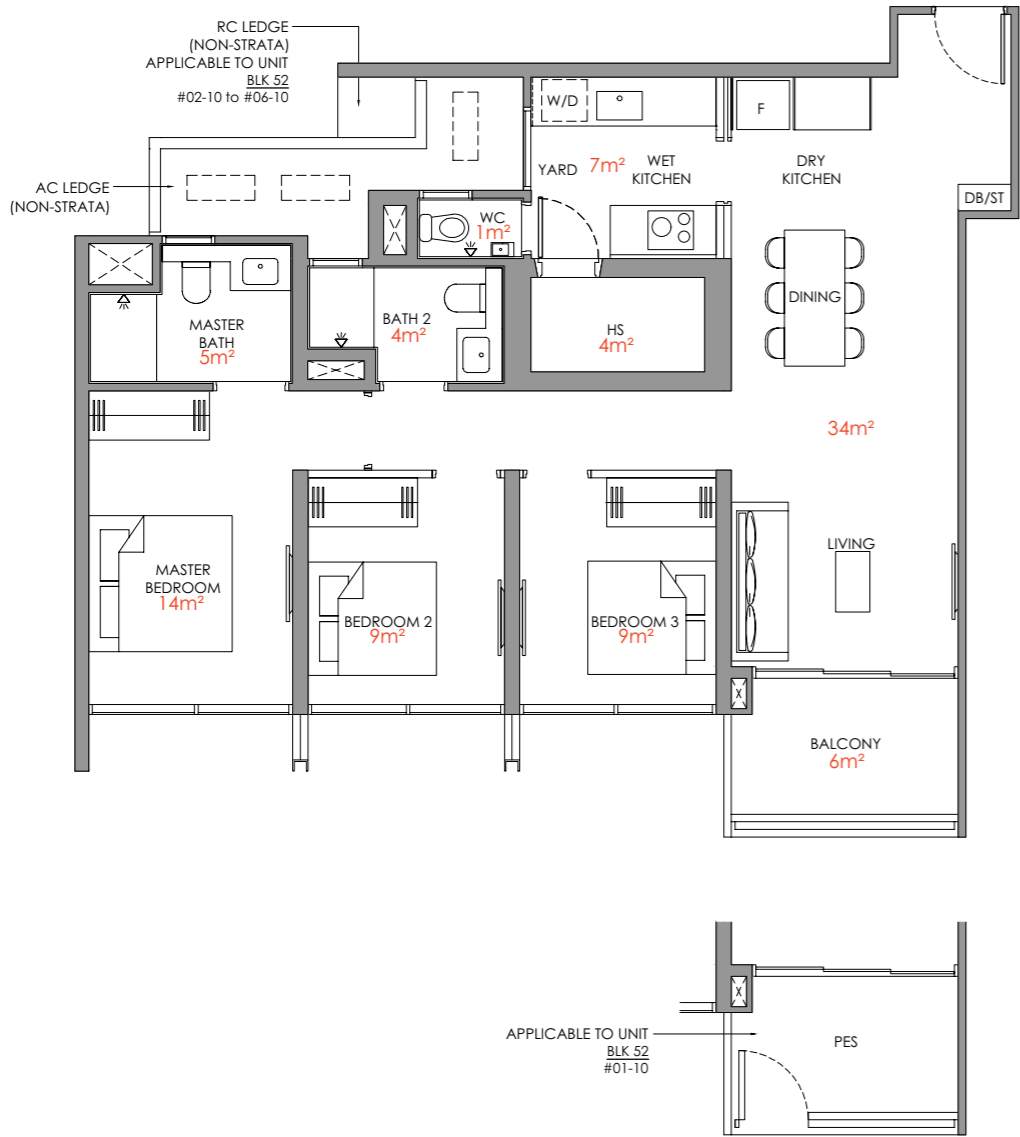
93 sqm / 1001 sqft

BLK 52
#02-10 to #06-10

Type C7P - PES

93 sqm / 1001 sqft

BLK 52
#01-10



- Legend (Where Applicable) :
- F - Fridge
 - W/D - Washer cum Dryer
 - TB - Tallboy
 - * Mirror Image
 - WC - Water Closet
 - HS - Household Shelter
 - WD - Washer & Dryer
 - WI - Wine Chiller
 - SC / ST - Shoe Cabinet / Store
 - DB / ST - Distribution Board / Store
 - RC Ledge - Reinforced Concrete Ledge
 - AC Ledge - Air-conditioner Ledge
 - Air-Conditioning condenser unit
 - Wall not allowed to be hacked or altered (including by way of drilling)
 - Services void space (excluded from strata area)
 - Rainwater downpipe shaft space (excluded from strata area)

DISCLAIMER: Area includes balcony where applicable, and excludes among others, the air-conditioner (AC) ledge and RC - Reinforced Concrete Ledge. Please refer to the key plan for orientation. All floor plans are approximate measurements only and are subject to government re-survey. The Balcony shall not be enclosed unless with the approved balcony screen. The cost of screen and installation shall be borne by the Purchaser.



3-Bedroom Premium

Type C8P

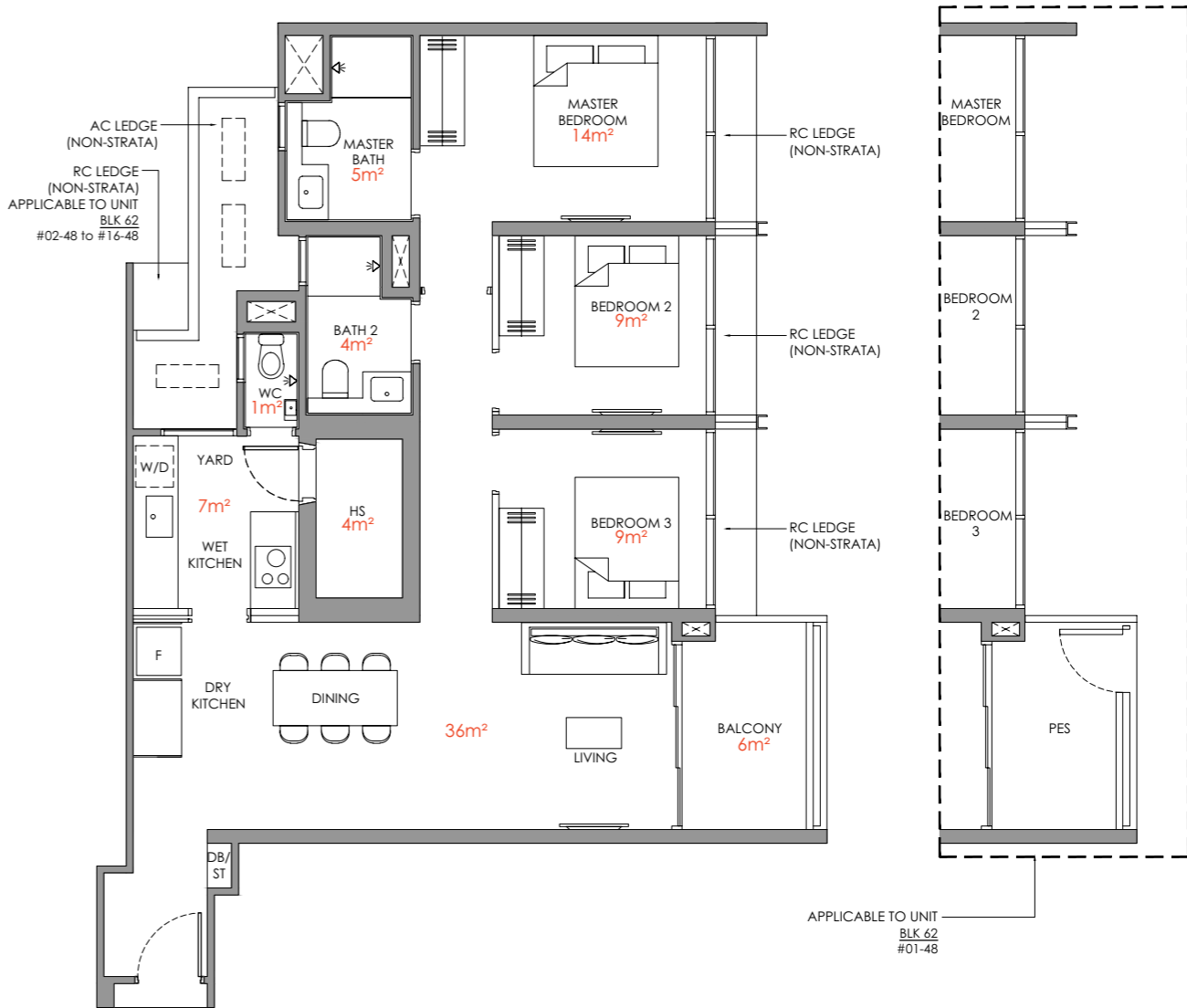
95 sqm / 1023 sqft

BLK 62
#02-48 to #16-48

Type C8P - PES

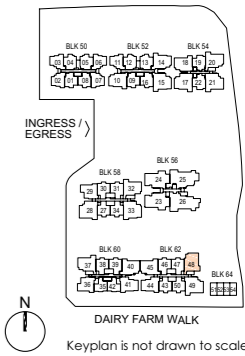
95 sqm / 1023 sqft

BLK 62
#01-48



- Legend (Where Applicable) :
- F - Fridge
 - W/D - Washer cum Dryer
 - TB - Tallboy
 - * Mirror Image
 - WC - Water Closet
 - HS - Household Shelter
 - WD - Washer & Dryer
 - WI - Wine Chiller
 - SC / ST - Shoe Cabinet / Store
 - DB / ST - Distribution Board / Store
 - RC Ledge - Reinforced Concrete Ledge
 - AC Ledge - Air-conditioner Ledge
 - Air-Conditioning condenser unit
 - Wall not allowed to be hacked or altered (including by way of drilling)
 - Services void space (excluded from strata area)
 - Rainwater downpipe shaft space (excluded from strata area)

DISCLAIMER: Area includes balcony where applicable, and excludes among others, the air-conditioner (AC) ledge and RC - Reinforced Concrete Ledge. Please refer to the key plan for orientation. All floor plans are approximate measurements only and are subject to government re-survey. The Balcony shall not be enclosed unless with the approved balcony screen. The cost of screen and installation shall be borne by the Purchaser.



3-Bedroom with Study

Type C9S
107 sqm / 1152 sqft

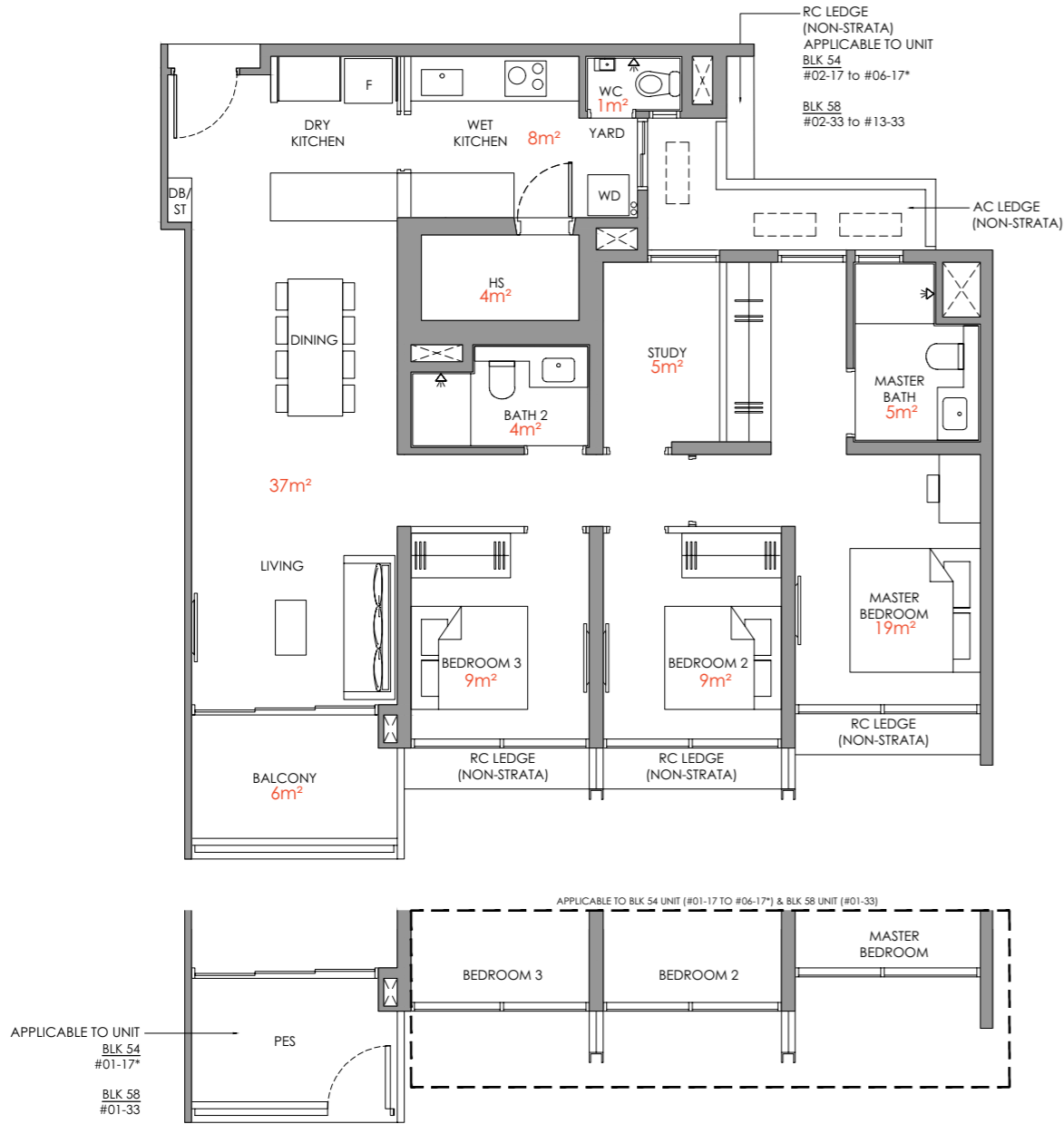
BLK 54
#02-17 to #06-17*

BLK 58
#02-33 to #13-33

Type C9S - PES
107 sqm / 1152 sqft

BLK 54
#01-17*

BLK 58
#01-33

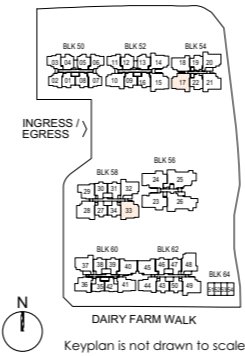


Legend (Where Applicable) :

F - Fridge WC - Water Closet SC / ST - Shoe Cabinet / Store
W/D - Washer cum Dryer HS - Household Shelter DB / ST - Distribution Board / Store
TB - Tallboy WD - Washer & Dryer RC Ledge - Reinforced Concrete Ledge
* Mirror Image WI - Wine Chiller AC Ledge - Air-conditioner Ledge

--- Air-Conditioning condenser unit
--- Wall not allowed to be hacked or altered (including by way of drilling)
--- Services void space (excluded from strata area)
--- Rainwater downpipe shaft space (excluded from strata area)

DISCLAIMER: Area includes balcony where applicable, and excludes among others, the air-conditioner (AC) ledge and RC - Reinforced Concrete Ledge. Please refer to the key plan for orientation. All floor plans are approximate measurements only and are subject to government re-survey. The Balcony shall not be enclosed unless with the approved balcony screen. The cost of screen and installation shall be borne by the Purchaser.



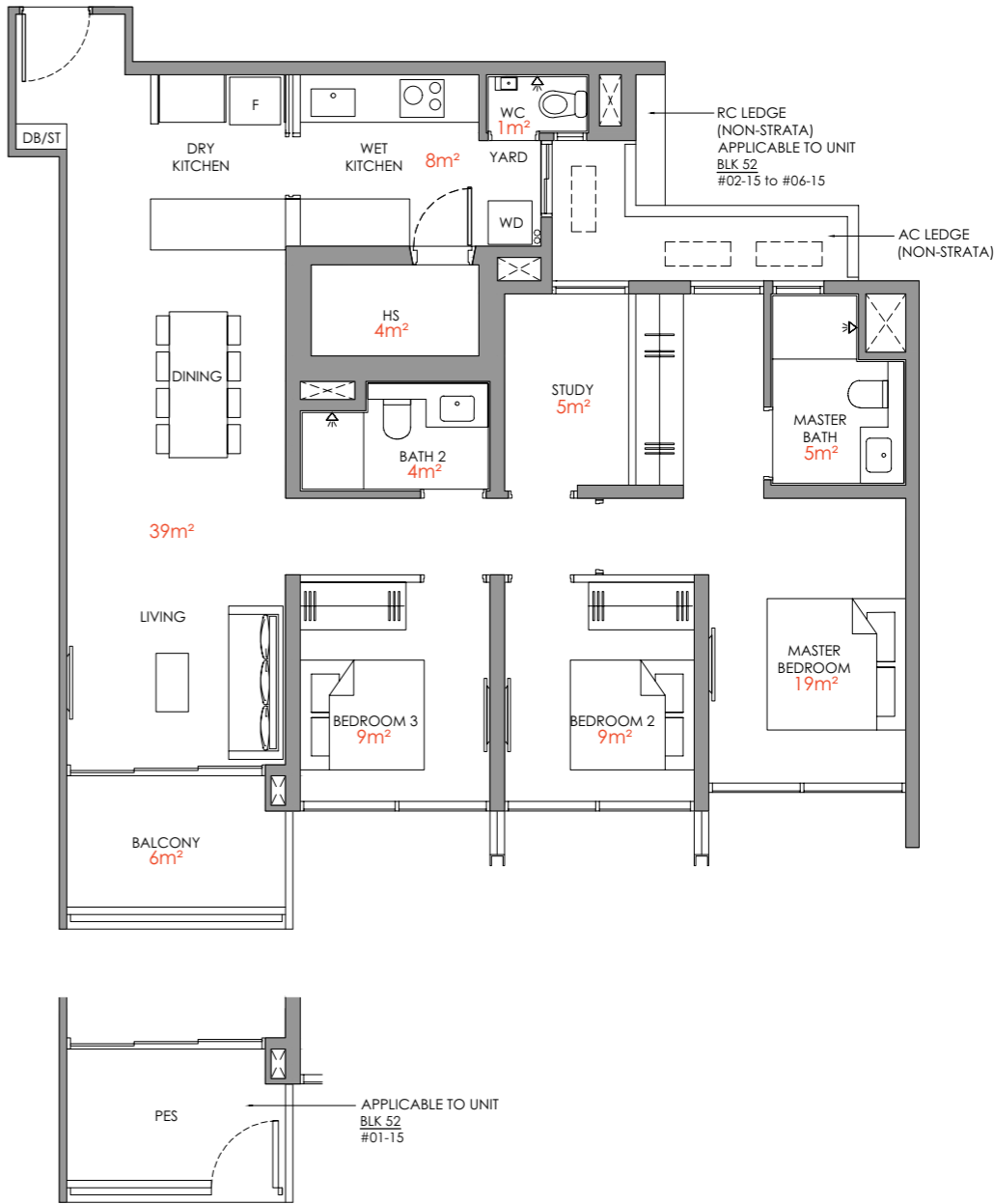
3-Bedroom with Study

Type C10S
109 sqm / 1173 sqft

BLK 52
#02-15 to #06-15

Type C10S - PES
109 sqm / 1173 sqft

BLK 52
#01-15

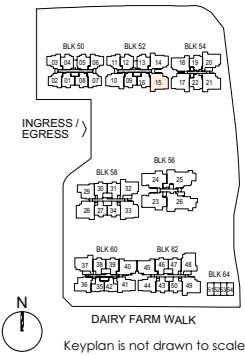


Legend (Where Applicable) :

F - Fridge WC - Water Closet SC / ST - Shoe Cabinet / Store
W/D - Washer cum Dryer HS - Household Shelter DB / ST - Distribution Board / Store
TB - Tallboy WD - Washer & Dryer RC Ledge - Reinforced Concrete Ledge
* Mirror Image WI - Wine Chiller AC Ledge - Air-conditioner Ledge

--- Air-Conditioning condenser unit
--- Wall not allowed to be hacked or altered (including by way of drilling)
--- Services void space (excluded from strata area)
--- Rainwater downpipe shaft space (excluded from strata area)

DISCLAIMER: Area includes balcony where applicable, and excludes among others, the air-conditioner (AC) ledge and RC - Reinforced Concrete Ledge. Please refer to the key plan for orientation. All floor plans are approximate measurements only and are subject to government re-survey. The Balcony shall not be enclosed unless with the approved balcony screen. The cost of screen and installation shall be borne by the Purchaser.



4-Bedroom Compact

Type D1

107 sqm / 1152 sqft

BLK 54
#02-21 to #06-21

BLK 58
#02-28 to #13-28*

BLK 62
#02-49 to #16-49

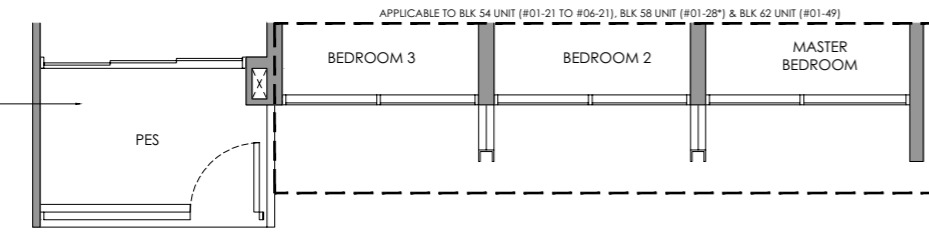
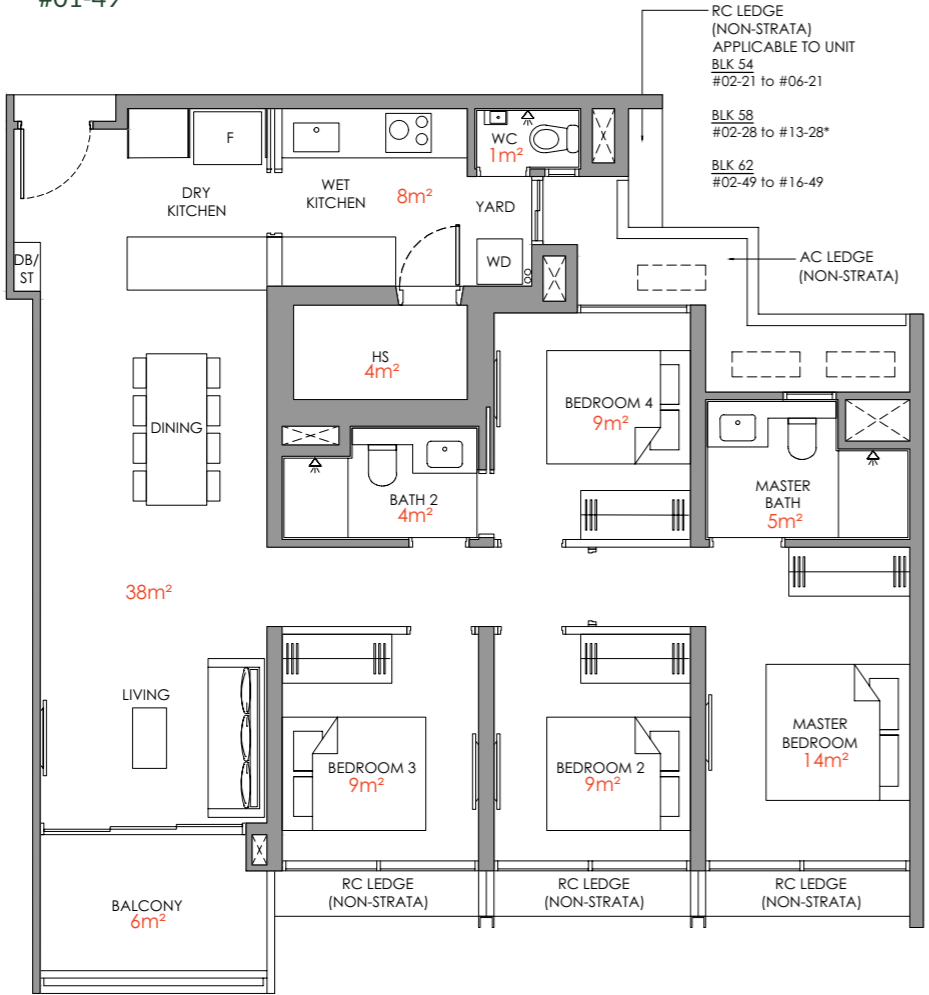
Type D1 - PES

107 sqm / 1152 sqft

BLK 54
#01-21

BLK 58
#01-28*

BLK 62
#01-49



- Legend (Where Applicable) :
- F - Fridge
 - W/D - Washer cum Dryer
 - TB - Tallboy
 - * Mirror Image
 - WC - Water Closet
 - HS - Household Shelter
 - WD - Washer & Dryer
 - WI - Wine Chiller
 - SC / ST - Shoe Cabinet / Store
 - DB / ST - Distribution Board / Store
 - RC Ledge - Reinforced Concrete Ledge
 - AC Ledge - Air-conditioner Ledge
 - Air-Conditioning condenser unit
 - Wall not allowed to be hacked or altered (including by way of drilling)
 - Services void space (excluded from strata area)
 - Rainwater downpipe shaft space (excluded from strata area)

DISCLAIMER: Area includes balcony where applicable, and excludes among others, the air-conditioner (AC) ledge and RC - Reinforced Concrete Ledge. Please refer to the key plan for orientation. All floor plans are approximate measurements only and are subject to government re-survey. The Balcony shall not be enclosed unless with the approved balcony screen. The cost of screen and installation shall be borne by the Purchaser.



4-Bedroom Premium

Type D2P

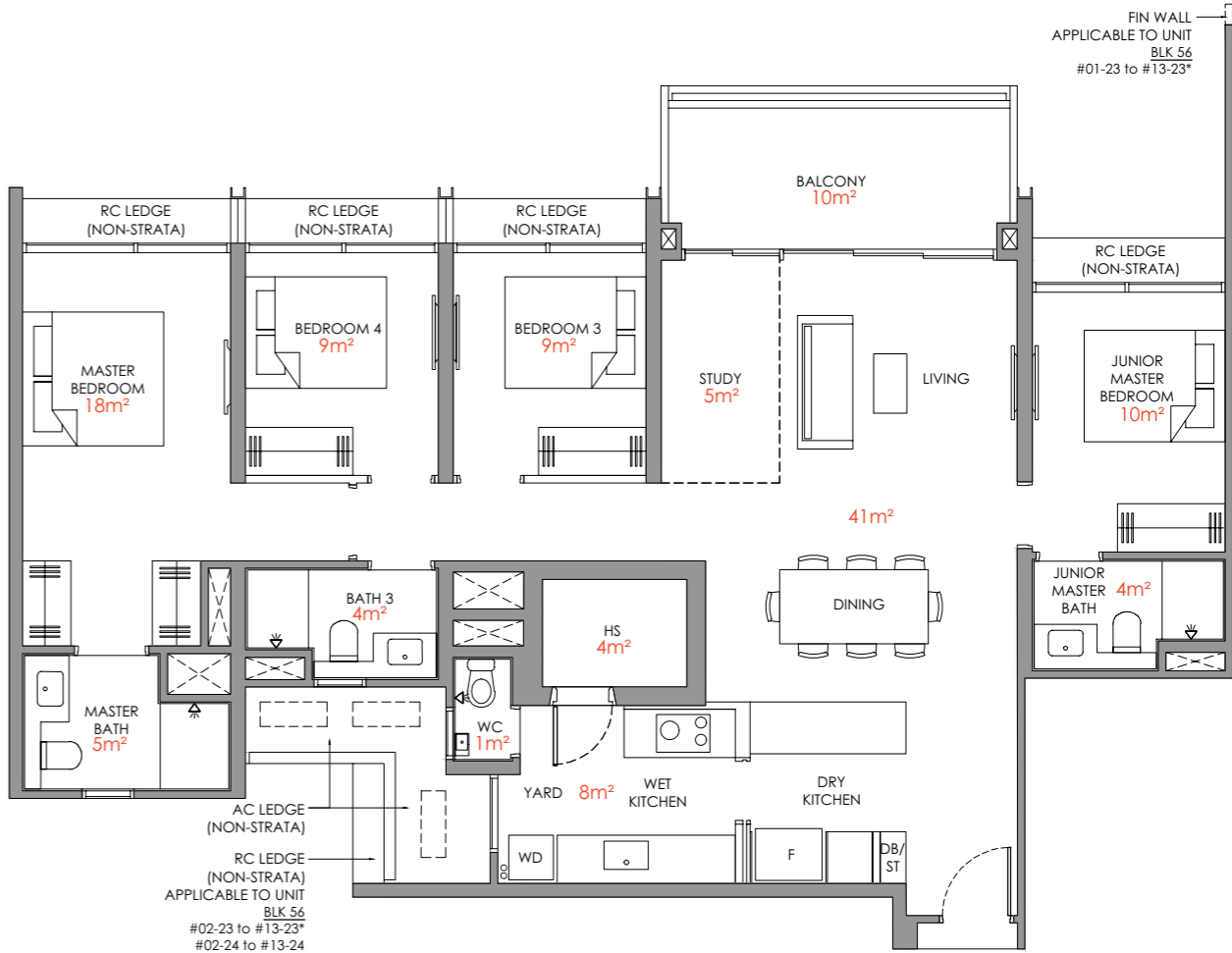
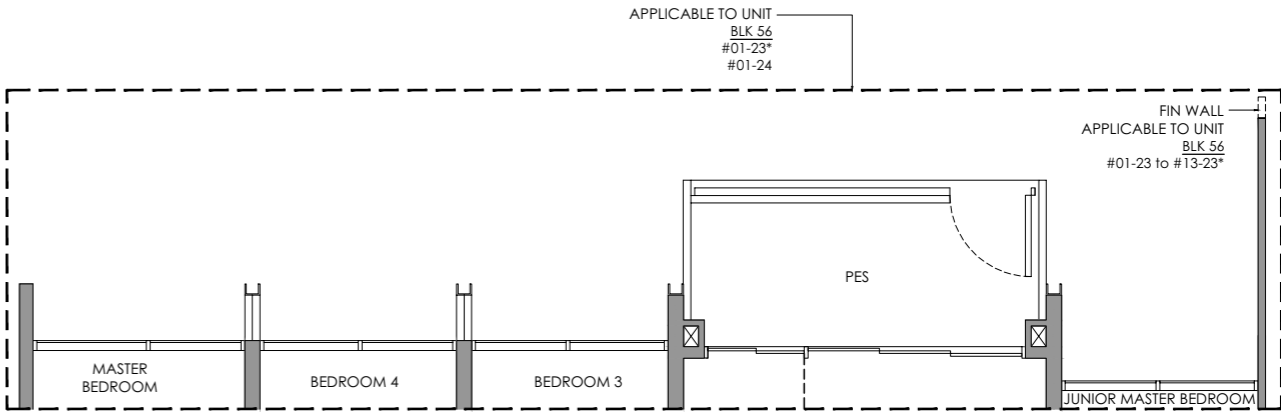
128 sqm / 1378 sqft

BLK 56
#02-23 to #13-23*
#02-24 to #13-24

Type D2P - PES

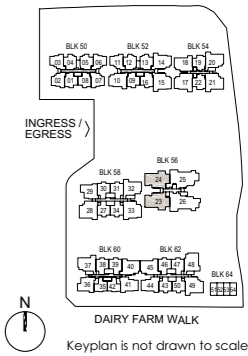
128 sqm / 1378 sqft

BLK 56
#01-23*
#01-24



- Legend (Where Applicable) :
- F - Fridge
 - W/D - Washer cum Dryer
 - TB - Tallboy
 - * Mirror Image
 - WC - Water Closet
 - HS - Household Shelter
 - WD - Washer & Dryer
 - WI - Wine Chiller
 - SC / ST - Shoe Cabinet / Store
 - DB / ST - Distribution Board / Store
 - RC Ledge - Reinforced Concrete Ledge
 - AC Ledge - Air-conditioner Ledge
 - Air-Conditioning condenser unit
 - Wall not allowed to be hacked or altered (including by way of drilling)
 - Services void space (excluded from strata area)
 - Rainwater downpipe shaft space (excluded from strata area)

DISCLAIMER: Area includes balcony where applicable, and excludes among others, the air-conditioner (AC) ledge and RC - Reinforced Concrete Ledge. Please refer to the key plan for orientation. All floor plans are approximate measurements only and are subject to government re-survey. The Balcony shall not be enclosed unless with the approved balcony screen. The cost of screen and installation shall be borne by the Purchaser.



5-Bedroom with Private Lift

Type E1

154 sqm / 1658 sqft

BLK 56

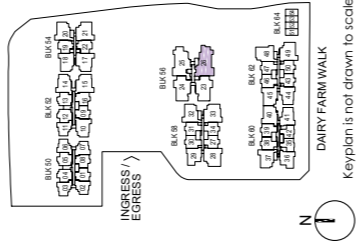
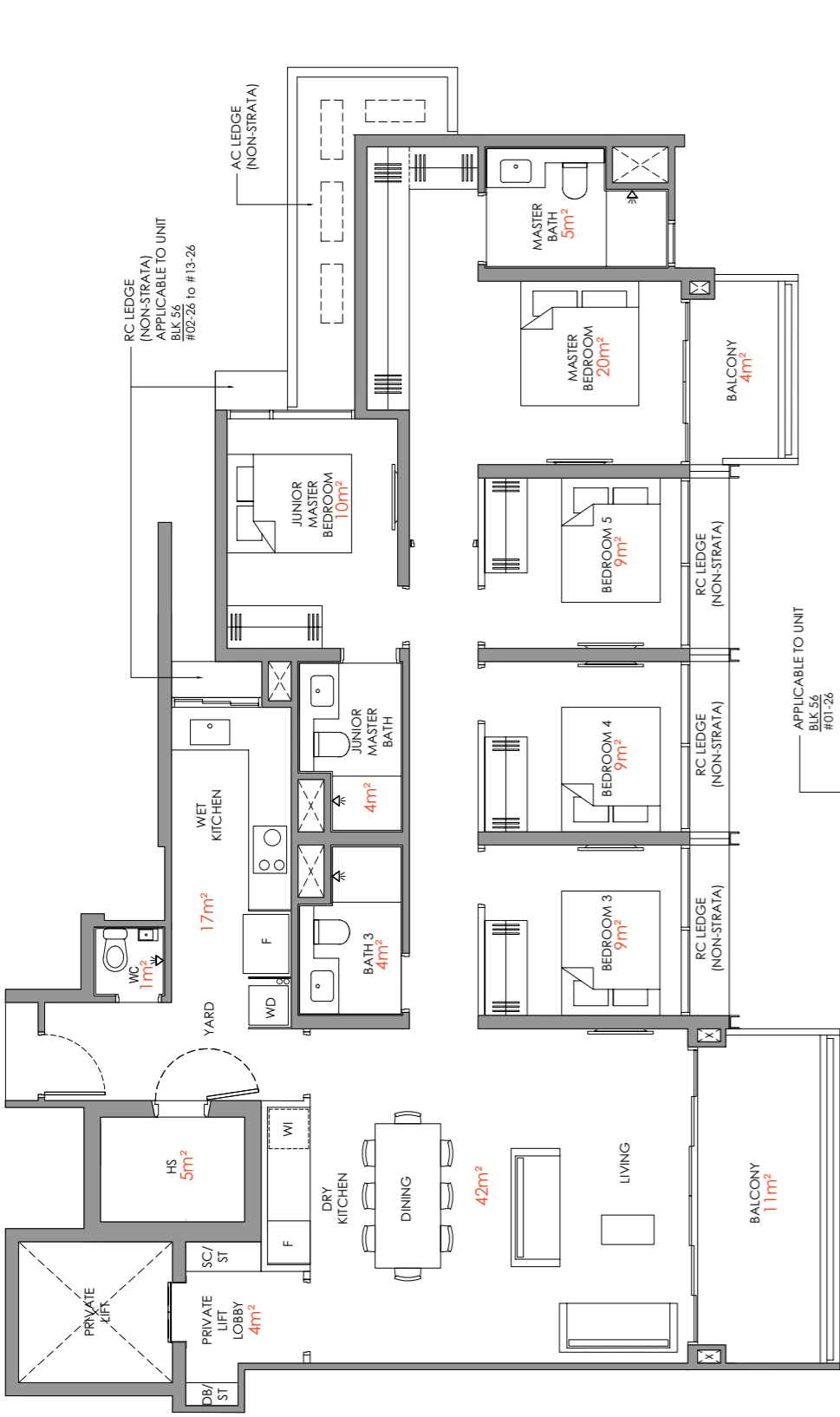
#02-26 to #13-26

Type E1 - PES

154 sqm / 1658 sqft

BLK 56

#01-26



Legend (Where Applicable) :
F - Fridge
WC - Water Closet
SC / ST - Shoe Cabinet / Store
WD - Washer cum Dryer
HS - Household Shelter
DB / ST - Distribution Board / Store
TB - Tallboy
WD - Washer & Dryer
RC Ledge - Reinforced Concrete Ledge
* Mirror Image
WI - Wine Chiller
AC Ledge - Air-conditioner Ledge

At-Conditioning condenser unit
Wall not allowed to be hacked or altered (including by way of drilling)
Services void space (excluded from strata area)

Rainwater downpipe shaft space (excluded from strata area)

DISCLAIMER: Area includes balcony where applicable, and excludes among others, the air-conditioner (AC) ledge and RC - Reinforced Concrete Ledge. Please refer to the key plan for orientation. All floor plans are approximate measurements only and are not intended to be used for construction purposes. The actual measurements may vary from the approximate measurements shown on the floor plan. The actual measurements shall be taken by the Purchaser.

5-Bedroom with Private Lift

Type E2

156 sqm / 1679 sqft

BLK 56

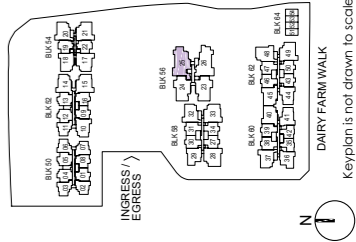
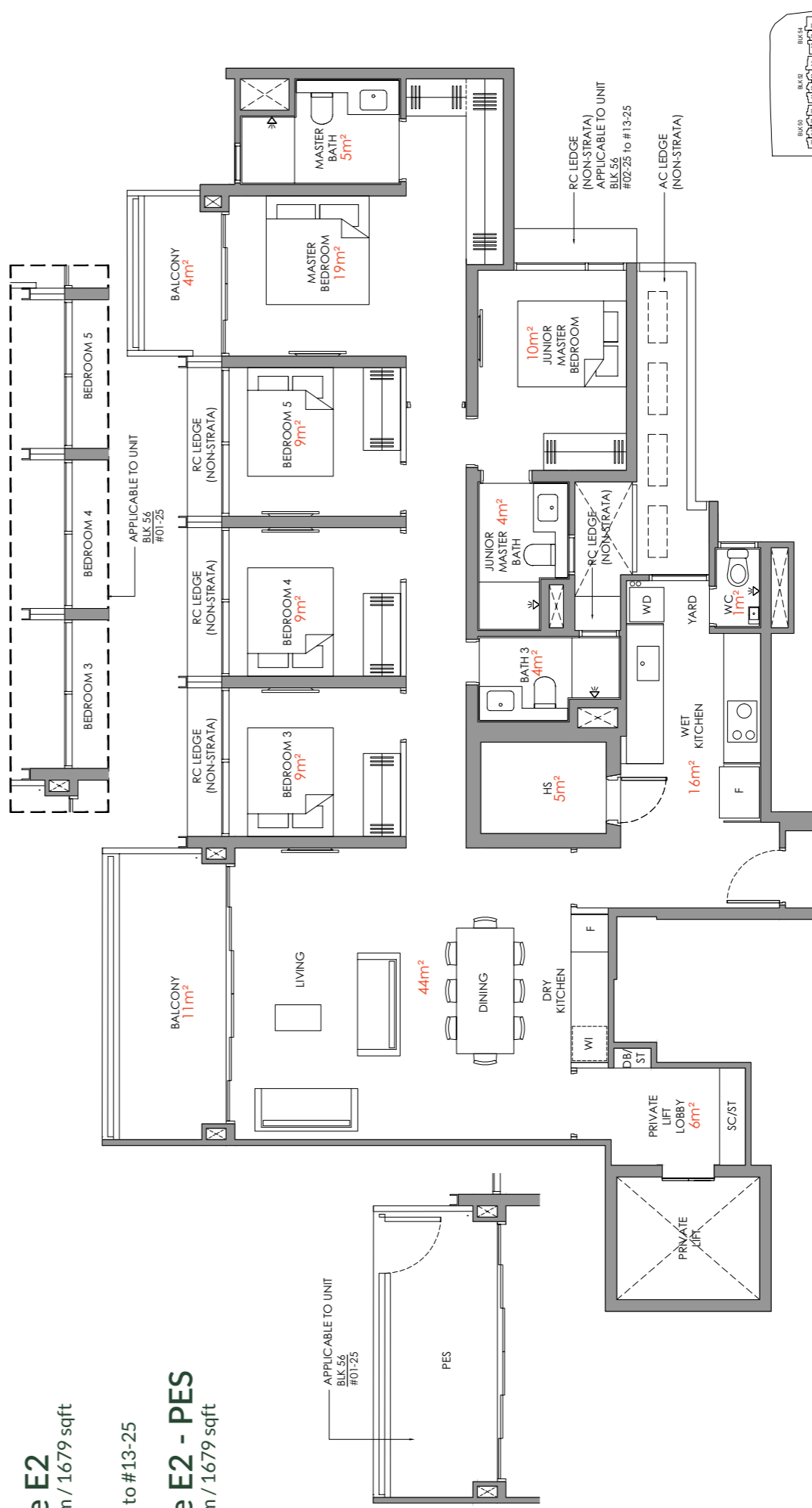
#02-25 to #13-25

Type E2 - PES

156 sqm / 1679 sqft

BLK 56

#01-25



Legend (Where Applicable) :
F - Fridge
WC - Water Closet
SC / ST - Shoe Cabinet / Store
WD - Washer cum Dryer
HS - Household Shelter
DB / ST - Distribution Board / Store
TB - Tallboy
WD - Washer & Dryer
RC Ledge - Reinforced Concrete Ledge
* Mirror Image
WI - Wine Chiller
AC Ledge - Air-conditioner Ledge

At-Conditioning condenser unit
Wall not allowed to be hacked or altered (including by way of drilling)
Services void space (excluded from strata area)

Rainwater downpipe shaft space (excluded from strata area)

DISCLAIMER: Area includes balcony where applicable, and excludes among others, the air-conditioner (AC) ledge and RC - Reinforced Concrete Ledge. Please refer to the key plan for orientation. All floor plans are approximate measurements only and are not intended to be used for construction purposes. The actual measurements may vary from the approximate measurements shown on the floor plan. The actual measurements shall be taken by the Purchaser.