

VILLAS

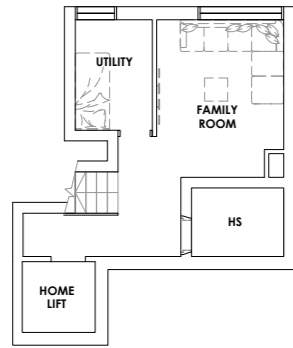
@ OLD TAMPINES ROAD



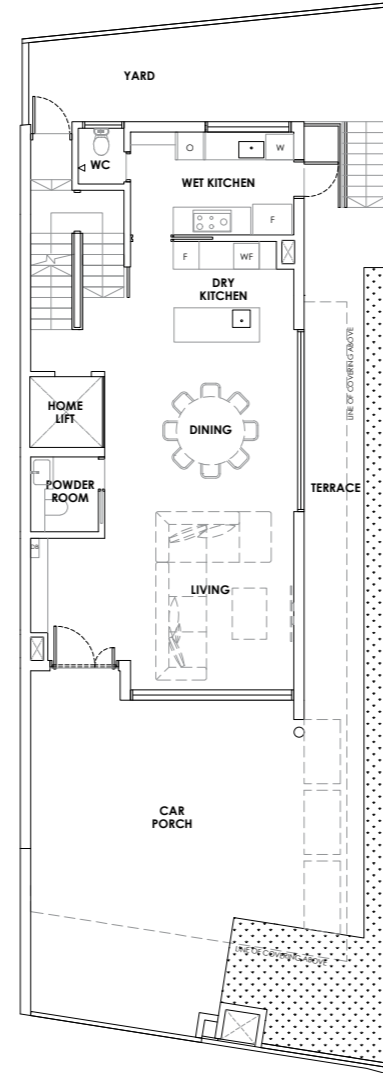
30 Old Tampines Road Singapore 509190

FLOOR PLAN

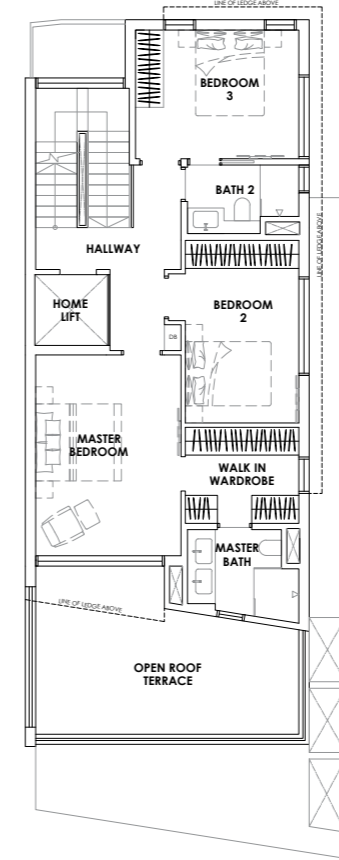
BASEMENT
34 sqm / 366 sqft



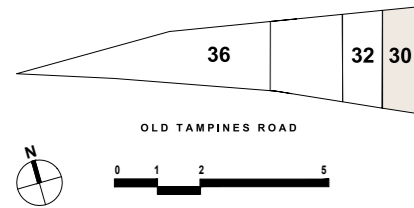
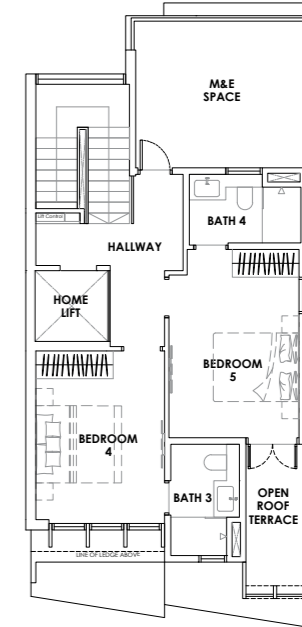
1ST STOREY
164 sqm / 1,765 sqft



2ND STOREY
107 sqm / 1,152 sqft



ATTIC
79 sqm / 850 sqft



LEGEND

- DB DISTRIBUTION BOARD
- WC WATER CLOSET
- HS HOUSEHOLD SHELTER
- M&E MECHANICAL & ELECTRICAL
- W WASHER CUM DRYER
- F REFRIGERATOR
- O OVEN
- WF WINE FRIDGE

All areas are inclusive of car porch, yard, terrace, open roof terraces, M&E space and voids. Furniture are indicative only and not provided. All plans are subject to amendment as approved by the relevant authorities. Floor areas are approximate measurements only and are subject to final survey.

SEMI-DETACHED



Artist's Impression

ESTIMATED BUILT-UP AREA FOR 30 OLD TAMPINES ROAD INCLUDES ALL COVERED AREAS, CAR PORCH, YARD, TERRACE, OPEN ROOF TERRACES, M&E SPACE AND VOIDS. (LAND SIZE: 202.9 SQM / 2,184 SQFT)

BASEMENT	1 ST STOREY	2 ND STOREY	ATTIC	ESTIMATED BUILT-UP AREA
34 sqm / 366 sqft	164 sqm / 1,765 sqft	107 sqm / 1,152 sqft	79 sqm / 850 sqft	384 sqm / 4,133 sqft

Huttons
SINGAPORE'S LARGEST
PRIVATE REAL ESTATE AGENCY

While all reasonable care has been taken in preparing this brochure, the Developer and agents shall not be held responsible for any inaccuracies or omissions, including but not limited to any variations arising from any change of facts or circumstances occurring after the date of print of this brochure. All visual representations including models, drawings, photographs, art renderings and illustrations are intended to portray only an artist's impression of the development and shall not be regarded as representations of fact. All information, specifications, renderings, visual representations and plans are current at the time of print of this brochure and are subject to such changes as may be required by the Developer and/or required or approved by the relevant authorities and notified to the Developer after the date of print of this brochure and shall not form part of any offer or contract nor constitute any warranty by the Developer. All floor areas and other measurements are approximate measurements only and are subject to final survey. The Sale and Purchase Agreement shall form the entire agreement between the Developer and the purchaser and supersedes and cancels in all respects all previous representations, warranties, promises, inducements or statements of intention, expressions of opinion, whether written or oral made by the Developer and / or its agents which are not embodied in the Sale and Purchase Agreement, unless approved by the Controller of Housing and expressly agreed to in writing between the parties.

Developer: Tong Eng Brothers Pte Ltd (Co Reg 196000160W) • Location: LOT MK31-05434W, MK31-05435V, MK31-05436P and MK31-05437T AT OLD TAMPINES ROAD (PASIR RIS PLANNING AREA) • Tenure of Land: Estate in Perpetuity • Expected Date of Vacant Possession: 31 Dec 2028 • Expected Date of Legal Completion: 31 Dec 2030 • Building Plan Approval No: A1553-00106-2021-BP01 dated 01 June 2023, A1553-00106-2021-BP03 dated 02 April 2024

teb
TONG ENG GROUP