

T H E
O R I E



Huttons
SINGAPORE'S LARGEST
PRIVATE REAL ESTATE AGENCY

Where timeless charms
meets modern luxury

FACT SHEET

'The Orie' takes inspiration from the Japanese words, "ORI" and "IE"– meaning "fold or origami" and "home" respectively. The Orie will exude a sense of quiet luxury, with depth & layers of shapes to unfold and experience.

Project Name	THE ORIE
Developer	Transcend Residential (Toa Payoh) Pte. Ltd. (Jointly developed - CDL, Frasers Property and Sekisui House)
Description	2 blocks of 40 storey apartments with landscaped deck, basement carpark and communal facilities
Region	RCR – District 12
Address	10 Lorong 1 Toa Payoh S319974 12 Lorong 1 Toa Payoh S319975
Tenure	99 years leasehold
Est. Land Area	15,743 sqm / 169,458 sq ft
Number of units	777
Expected Date of Vacant Possession	31 May 2030
Est. Number of Carpark Lots	Estimated 627 lots including 19 electrical lots and 5 accessible lots
Architect	ADDP Architects LLP
Landscape Consultant	Tinderbox Pte Ltd
Builder	Woh Hup Pte Ltd
Project Interior Designer	2 nd Edition Pte Ltd

Where anticipation
meets aspirations



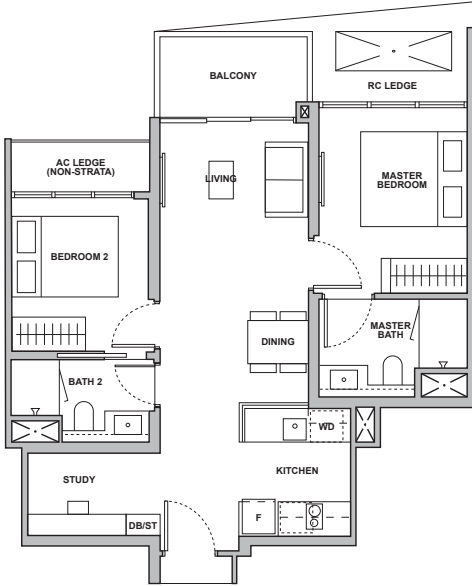
UNIT MIX

Unit Type	Type	Area (Sqft)	Area (Sqm)	No. of Units	% Unit Mix
1 BR + Study	A1S	517	48	78	60%
2 BR (1 Bath)	B1	592	55	78	
2 BR (2 Bath)	B2	646	60	77	
2 BR Premium	B3	678	63	77	
2 BR Premium + Study	B4S	700	65	78	
3 BR	C1	850	79	78	40%
3 BR Premium	C2 & C2A	1,023-1,044	95-97	78	
3 BR (Dual Key)	C3DK	1,130	105	39	
4 BR	D1 & D2	1,216	113	79	
4 BR Premium + Study	D3S	1,367	127	39	
5 BR (with Private Lift)	E1	1,453	135	77	
TOTAL 777 units					

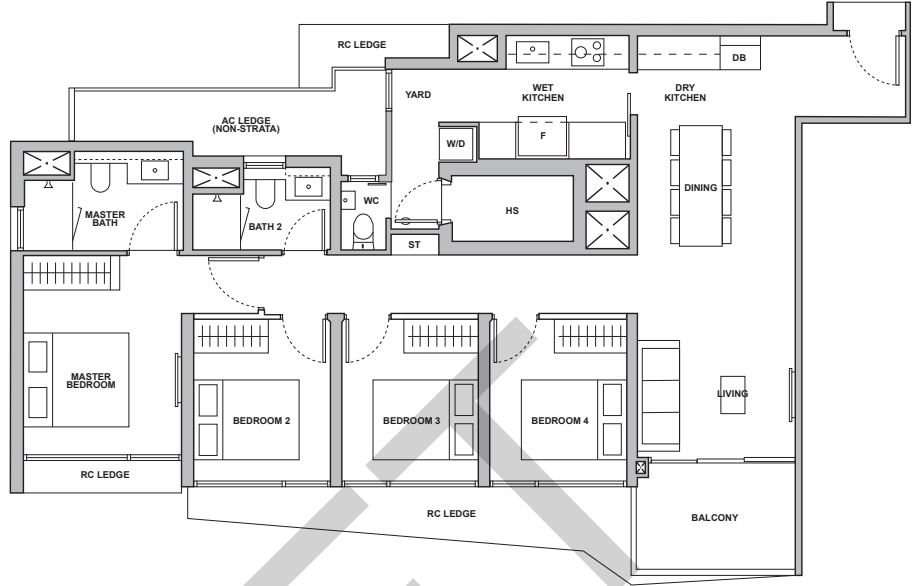
***Areas are estimates only and are subject to change and final survey

SHOWFLAT UNIT TYPES

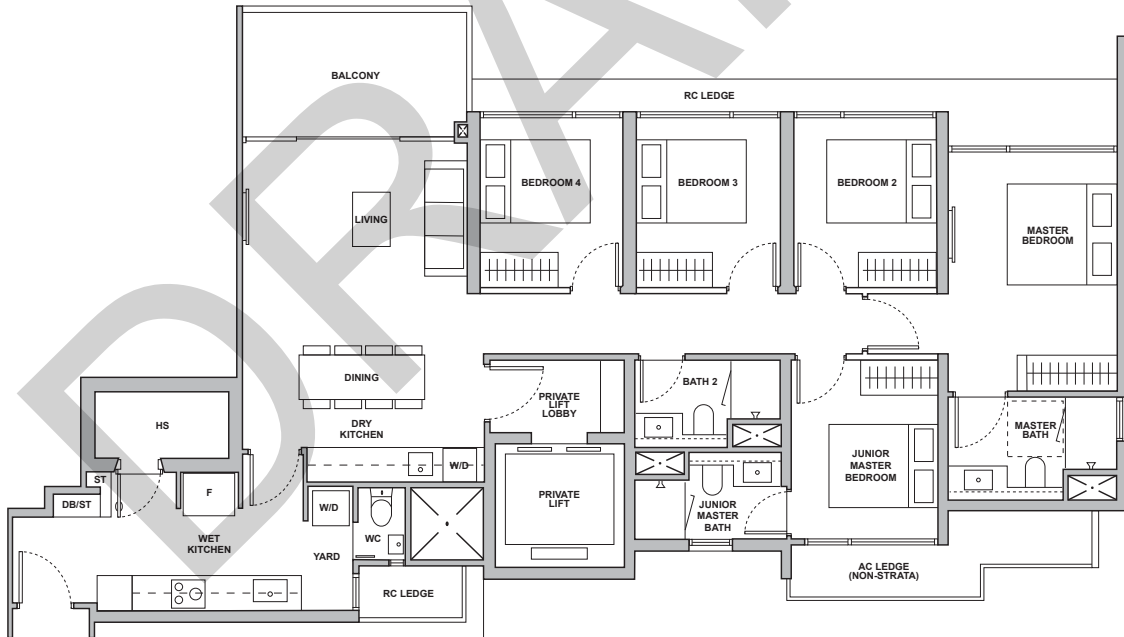
2 Bedroom Premium + Study
65sqm | 699sqft



4 Bedroom Premium
113sqm | 1,220sqft



5 Bedroom (With Private Lift)
135sqm | 1,453sqft



**Disclaimer All Plans are subjected to changes as may be approved by the relevant authorities. Floor area are approximately measurements and are subjected to government survey. "Key Plans are Not Drawn To Scale"*

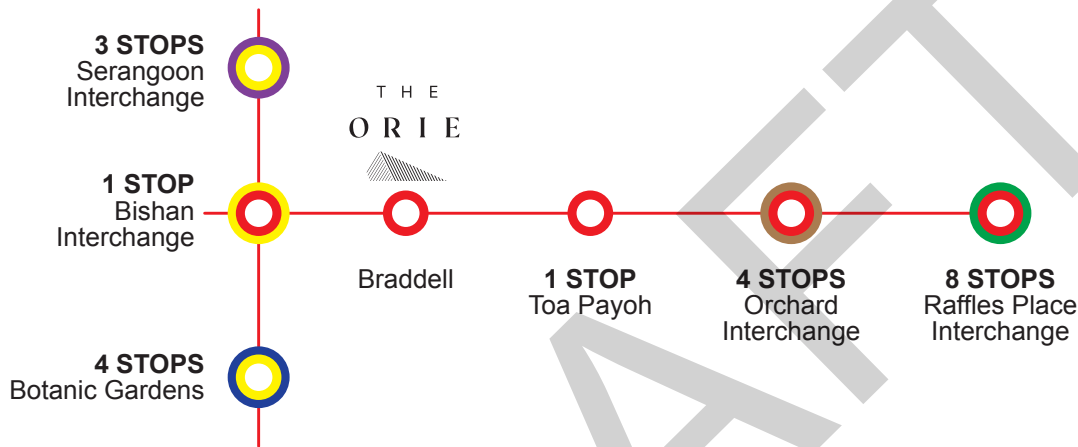
10 UNIQUE SELLING POINTS

Huttons

SINGAPORE'S LARGEST PRIVATE REAL ESTATE AGENCY

- 2 blocks of majestic 40-storey high towers with panoramic views of the City.
- Jointly developed by 3 renowned developers – CDL, Fraser Property and Sekisui House.
- Comprehensive facilities and thoughtful residential services to cater to the needs of the residents.
- Efficient layout with branded provisions from De Dietrich, Samsung, Hansgrohe, Duravit.
- Poised to achieve BCA's Green Mark Platinum Super Low Energy (SLE) Building Certificate with 100% landscape replacement area.
- First luxurious residential launch in Toa Payoh since 2016.
- 5-min walk to Braddell MRT Station and 1 stop to Bishan MRT Interchange (North South/Circle Line).
- Junction 8 Shopping Mall, TPY HDB Hub and upcoming Toa Payoh Intergrated Development within reach.
- Close proximity to popular schools, including Pei Chun Public School, Raffles Girls Secondary and SJI International.
- Accessible to major expressways (PIE and CTE) as well as the upcoming North-South Corridor.

****Strictly Private and Confidential. Information subject to change without prior notice. Not for circulation.*

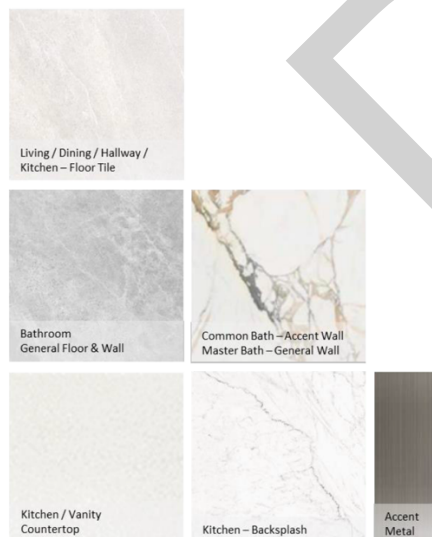


UNIT PALETTE & FINISHES

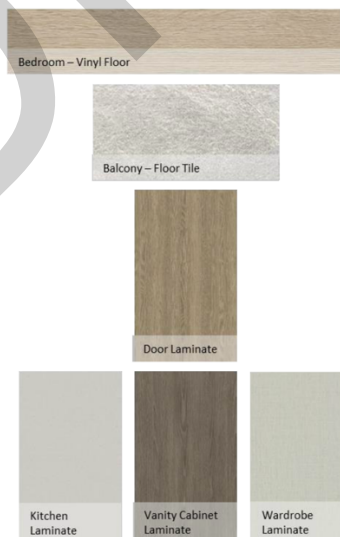
TIER 1 – SLEEK URBAN TONES

Modern, urban hues exuding sophistication and metropolitan charm.

TYPE 1, 2 & 3 BR UNIT



APPLICABLE FOR ALL UNIT TYPES



TIER 2 – RADIANT WARMTH

Inviting hues glowing with warmth and radiance, evoking comfort.

TYPE 4 & 5 BR UNIT



PREMIUM PROVISION

De Dietrich

DURAVIT

SAMSUNG

hansgrohe