

Reignwood
HAMILTON
scotts

The most famous residences
IN THE WORLD
世界最著名的公寓

FREEHOLD 永久地契



“From stunning city views to luxurious appointments, Hamilton Scotts is filled with sensational attractions.”

— Robb Report

One of the world's tallest freehold residence with en-suite sky garage
Every generation has its go-getters. The ones at the top of their game. The ones who seize once-in-a-lifetime opportunities. The ones in pursuit of the exceptional today, tomorrow, forever. Here is where you belong — Hamilton Scotts, home to one of the tallest en-suite sky garage in the world

全世界最高的空中私车门廊永久地契寓所之一

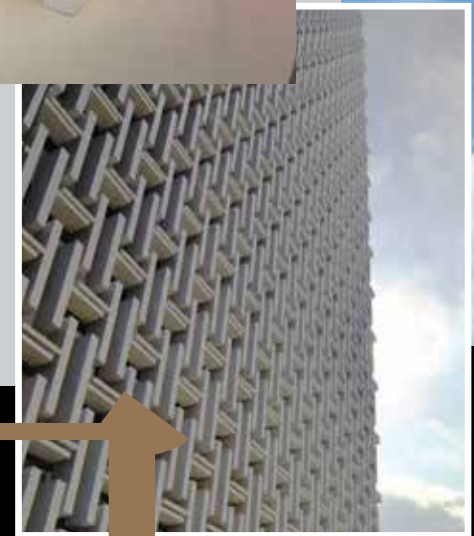
每一代人都有自己的追求。无论是站在行业领域最高点的人、紧紧抓住千载难逢机遇的人、或是那些追求卓越生活的人 — 今天、明天、永远。汉美登公寓，世界最高的空中私车门廊永久地契寓所之一 — 就是您的归属。

家

The height of
ULTRA LUXURY
极致的奢华

Every masterpiece has its centrepiece. At Hamilton Scotts, all eyes will be on your prized four-wheel trophy with one of the world's tallest en-suite sky garage in your living room. Clad in a sleek glass facade, Hamilton Scotts' spacious residences are the ultimate expression of ultra luxury. The ceiling is raised. So is the bar.

每项杰作都有吸睛的焦点。在汉美登公寓，您尊贵的四轮座驾，停放在全世界最高的空中私车门廊，也即是您的客厅中，绝对吸引所有人的目光。宽敞的住宅被光滑的玻璃幕墙包裹，是超豪华生活的终极体现。挑高的不仅仅是天花板，更是您的奢华生活享受。



One of the world's tallest
en-suite sky garage
全世界最高的空中
私车门廊永久地契寓所

天际

An A-list
ADDRESS
顶级住址



Experience cosmopolitan living at full throttle with the sleepless glitz of Orchard Road just a heartbeat away. Commanding a prestigious District 9 address on Scotts Road, Hamilton Scotts is where you can count Michelin-starred restaurants, nightlife destinations and a world-renowned shopping belt as your neighbours. A spectacular vista of Goodwood Hill's verdant foliage completes your portrait of privilege.

灯光闪烁夜不眠，近在咫尺的乌节路，让您尽享大都会精彩生活。
位于黄金地段第9邮区诗阁路上的汉美登公寓，毗邻米其林星级
餐馆、夜生活场所和举世闻名的购物商圈。周围良木山翠绿的景色，
闹中取静，浑然天成，让您鱼与熊掌皆可得。



A coveted
LIFESTYLE
让人艳羡的生活方式



Synonymous with success, Hamilton Scotts is perfect for those seeking a landmark lifestyle. Hamilton Scotts is a home with great investment potential with the upcoming master plan for Orchard Road's rejuvenation unfolding at its doorstep.

汉美登公寓是所有成功的代名词，
为追求顶级生活方式的人，提供了无可比拟的享受。
重塑乌节路的计划，将在这个购物商圈注入新的活力，
也大大提振了汉美登公寓的投资潜能。

事



The epitome of EXTRAVAGANCE

奢华生活的缩影



Nothing says luxury quite like a complimentary breakfast and dedicated concierge service to start the day. The indulgence continues within the walls of your home with lavish appointments and designer fittings, starting from a spacious 2,756 sq ft. This is life at its picture-perfect best.

由免费早餐和专业礼宾服务开启新的一天，还有什么比得上这样奢侈豪华的享受？公寓内奢华的装置和设计师发挥巧思的装潢，在2756平方英尺的宽敞空间里，挥洒出别样的情调，将您笼罩在其优雅氛围中。这是最完美的生活写照。

Spacious layouts with marble flooring
铺设大理石地板的宽敞格局

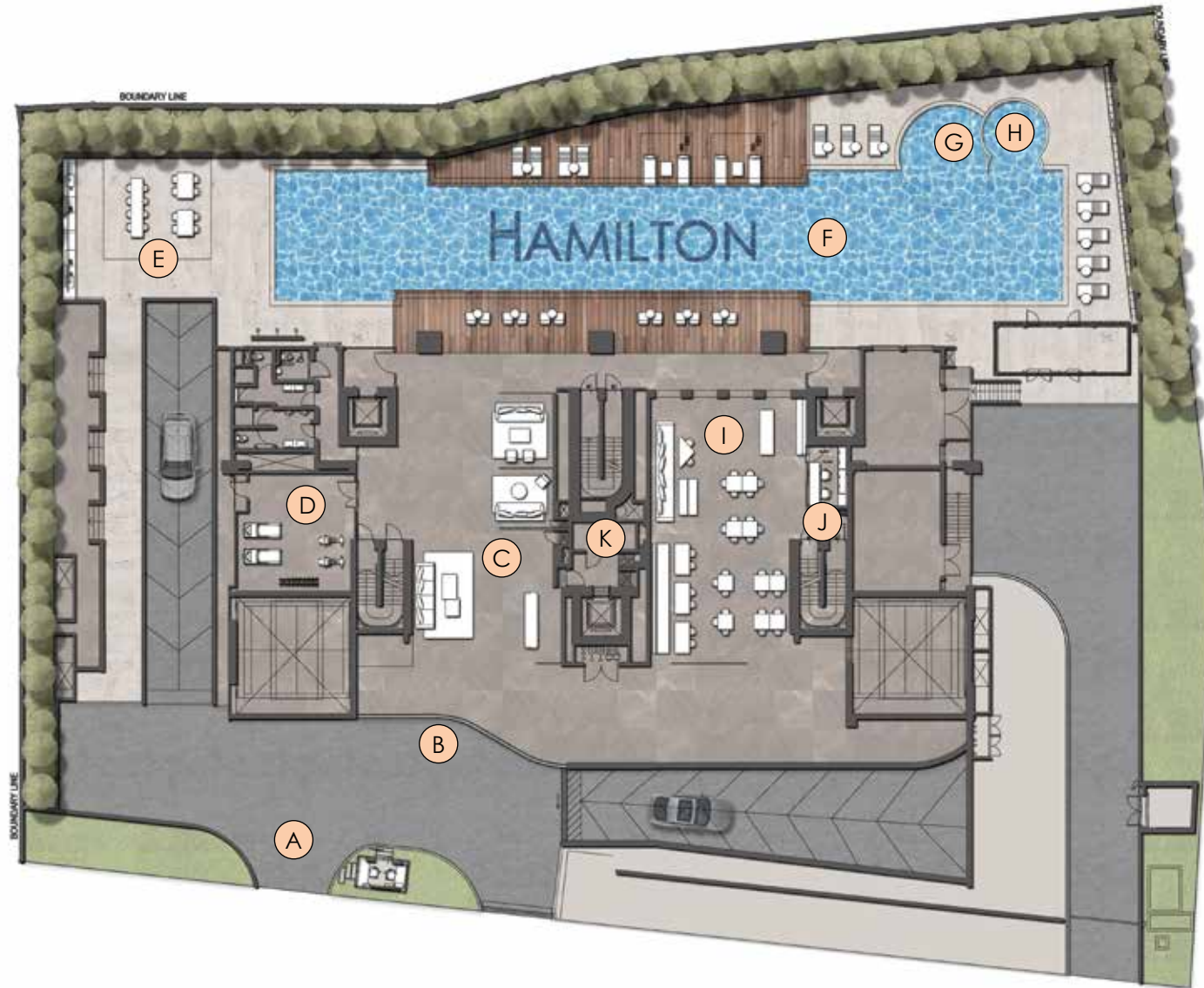


Designer fittings from
international lifestyle brands
国际生活品牌的 设计装潢



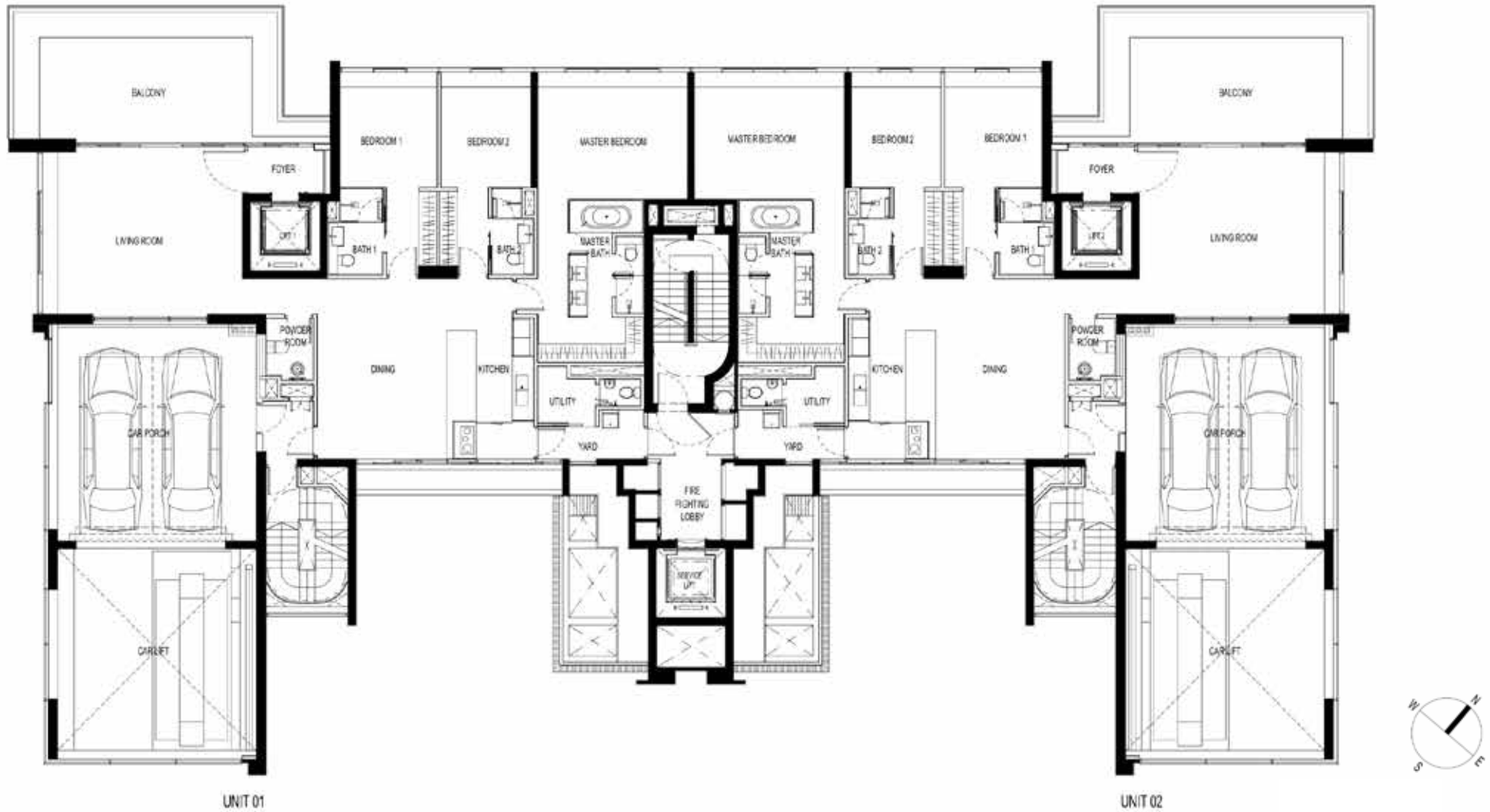
SITE & LAYOUT

地段与格局



LEGEND 图例

- A – Main Entrance
主要入口处
- B – Entrance Pavilion
入口亭
- C – Lobby Lounge
电梯大厅
- D – Gym
健身房
- E – Garden Grill
花园烧烤台
- F – Swimming Pool
游泳池
- G – Play Pool
戏水池
- H – Jacuzzi
水力按摩池
- I – Monaco Lounge
摩纳哥贵宾室
- J – Management Office
管理处
- K – Fire Command Centre
火患控制中心



Not drawn to scale

OVERVIEW 总览

Site Area 地段面积	36,000 sqft (approx.) 约36,000平方英尺
Elevation 高度	30 Storeys 30层
Tenure 地契租约	Freehold 永久地契
Total Units 单位总数	56

UNIT MIX 单位

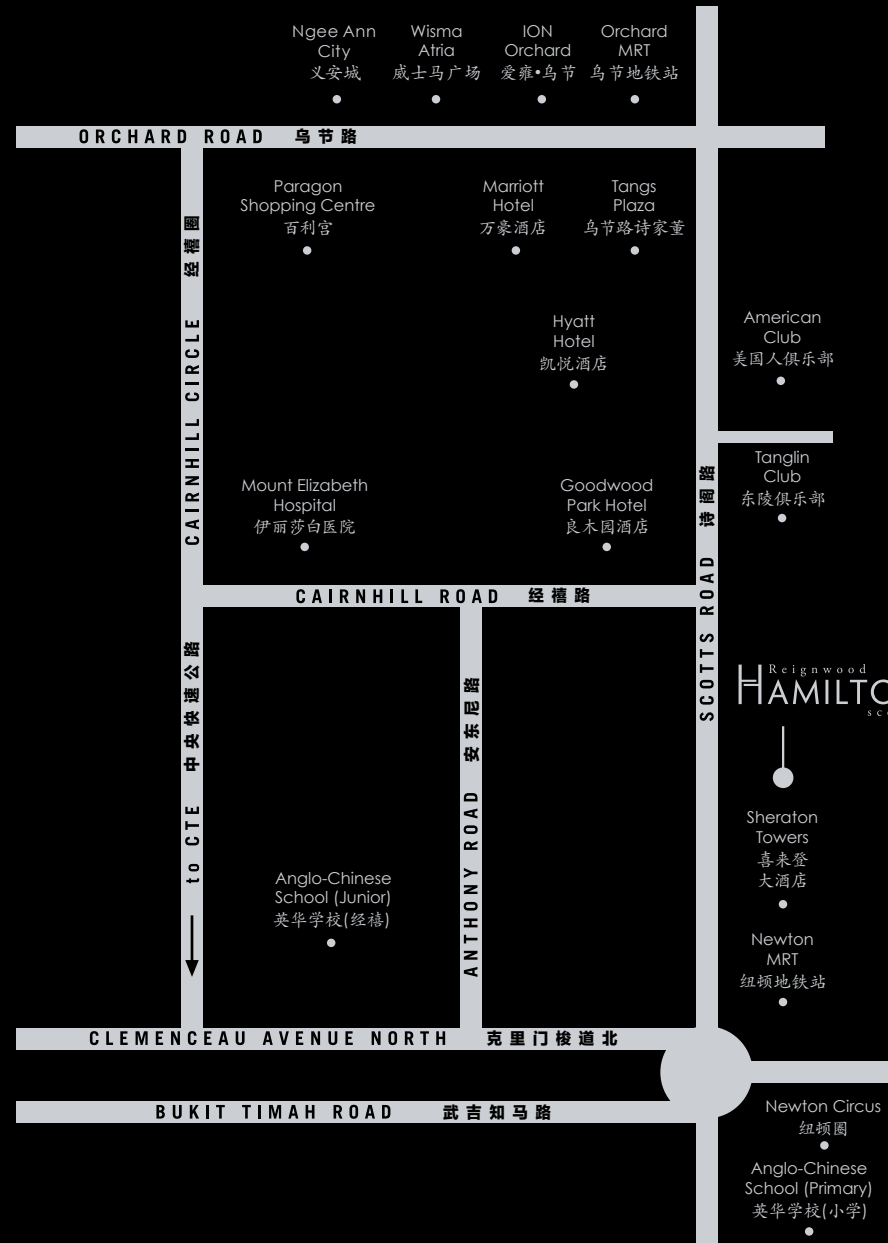
Type 种类	Number 数量	Size 面积	Location 楼层
3-Bedroom Apartment 3卧房公寓	52	2,756 sqft 平方英尺	Level 2-27
Junior Penthouse 小型顶层公寓	2	3,229 sqft 平方英尺	Level 28
Penthouse 顶层公寓	2	6,975 sqft 平方英尺	Level 29, 30 & Terrace



REIGNWOOD 华彬集团

Founded in 1984, Reignwood Group is an international and diversified multinational company with more than 100 branches and subsidiaries in Asia, Europe and North America. Investing in areas such as fast-moving consumer goods, green health industry, strategic investment industry and financial leasing, Reignwood Group has built a health, business and lifestyle platform for global elites.

华彬集团于1984年创建，是一家国际化、多元化的跨国企业，在亚洲、欧洲、北美等地，分布着百余家分支机构与子公司。华彬集团的产业结构，包括快速消费品、绿色健康产业、战略投资性产业、金融租赁等。华彬集团为国际精英，构建了保健和现代化休闲商务生活平台。



Newton MRT
纽顿地铁站
3-min walk
步行3分钟

Singapore Botanic Gardens
新加坡植物园
7-min drive
7分钟车程

Anglo-Chinese School (Junior) / (Primary)
英华学校
Within 1km
在1公里以内

Marina Bay Financial Centre
滨海湾金融中心
10-min drive
10分钟车程

Orchard Road
乌节路
1-min drive
1分钟车程

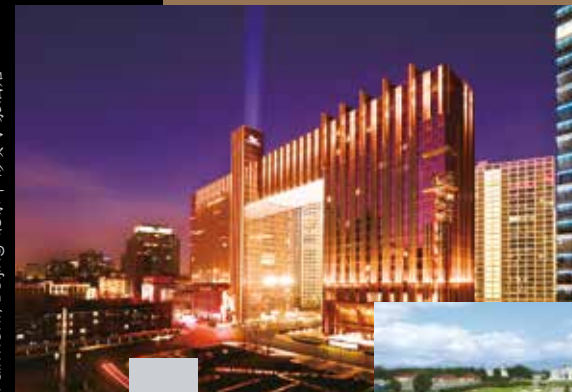
Dempsey Hill
登布西山
9-min drive
9分钟车程

Central Business District
中央商业区
9-min drive
9分钟车程

Wentworth Club, London
伦敦温特沃斯高尔夫球俱乐部



Fairmont, Beijing
北京华彬费尔蒙酒店



Ten Trinity Square, London
伦敦三一广场10号



Reignwood Pine Valley, Beijing
北京华彬庄园

