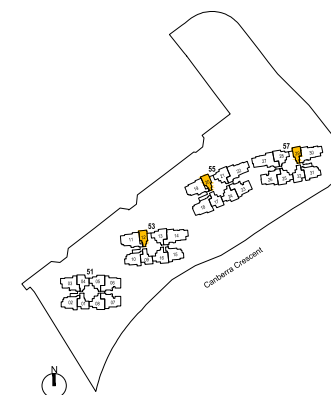
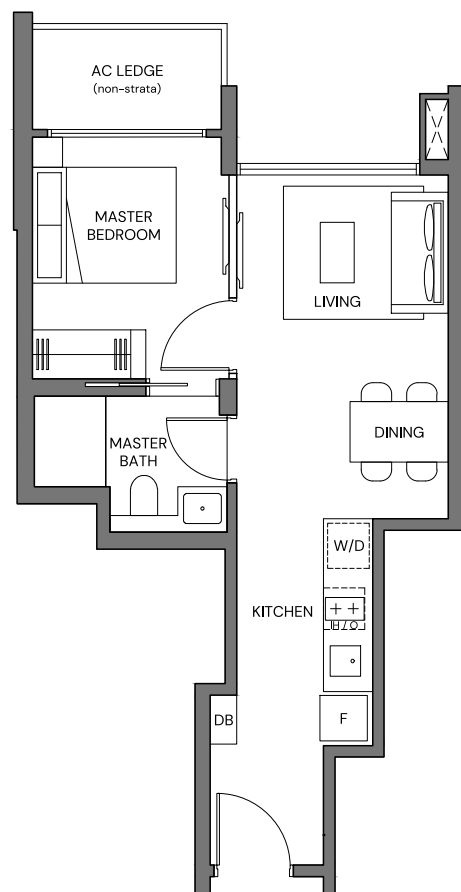


1-Bedroom

TYPE 1BR
38 sqm / 409 sqft

BLK 53 #01-12
BLK 55 #01-20
BLK 57 #01-29*

*Mirrored unit



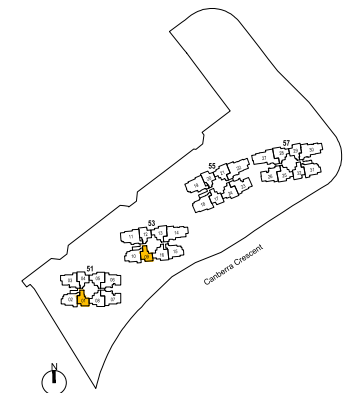
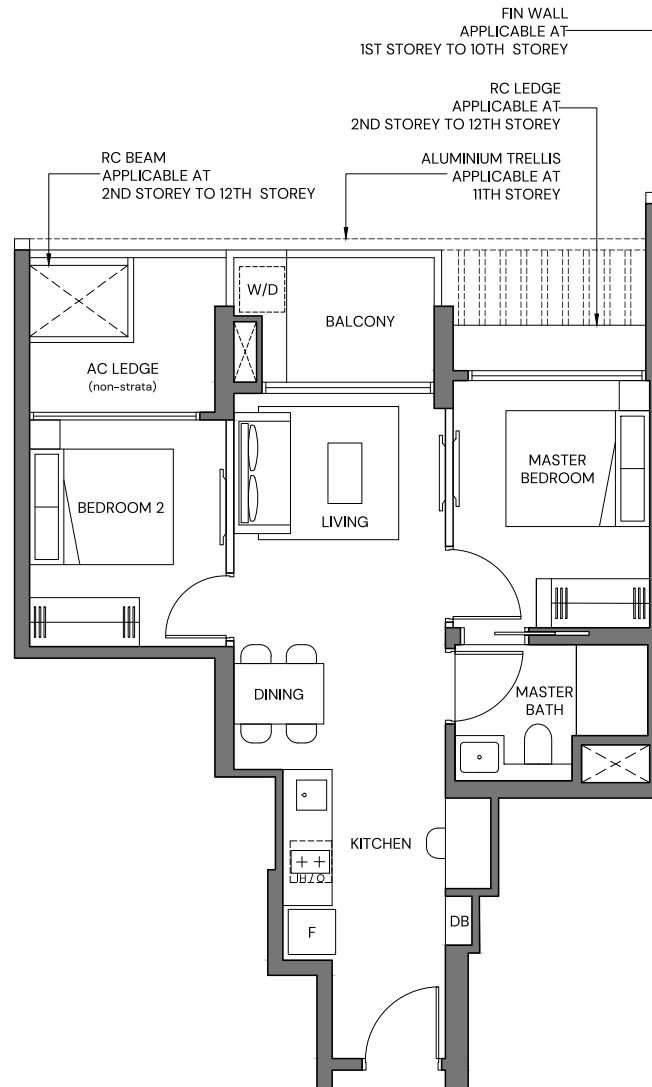
0 1 5M

AREA INCLUDES PRIVATE ENCLOSED SPACE (PES) OR BALCONY, WHERE APPLICABLE. ALL AC LEDGES AND RC LEDGES (NON-LOAD BEARING) ARE EXCLUDED FROM STRATA AREA. THE PLANS ARE SUBJECT TO CHANGE AS MAY BE REQUIRED BY RELEVANT AUTHORITIES. ALL AREAS AND MEASUREMENTS STATED HEREIN AS APPROXIMATE AND SUBJECT TO FINAL SURVEY.

2-Bedroom Compact

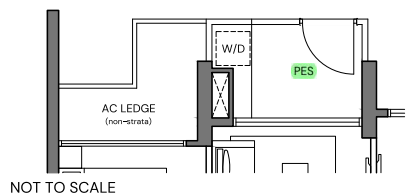
TYPE 2BR-C (PES) BLK 53 #01-09
53 sqm / 570 sqft

TYPE 2BR-C BLK 51 #02-01 - #12-01
53 sqm / 570 sqft BLK 53 #02-09 - #12-09



0 1 5M

AREA INCLUDES PRIVATE ENCLOSED SPACE (PES) OR BALCONY, WHERE APPLICABLE. ALL AC LEDGES AND RC LEDGES (NON-LOAD BEARING) ARE EXCLUDED FROM STRATA AREA. THE PLANS ARE SUBJECT TO CHANGE AS MAY BE REQUIRED BY RELEVANT AUTHORITIES. ALL AREAS AND MEASUREMENTS STATED HEREIN AS APPROXIMATE AND SUBJECT TO FINAL SURVEY.

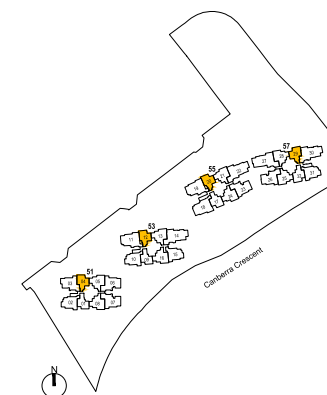
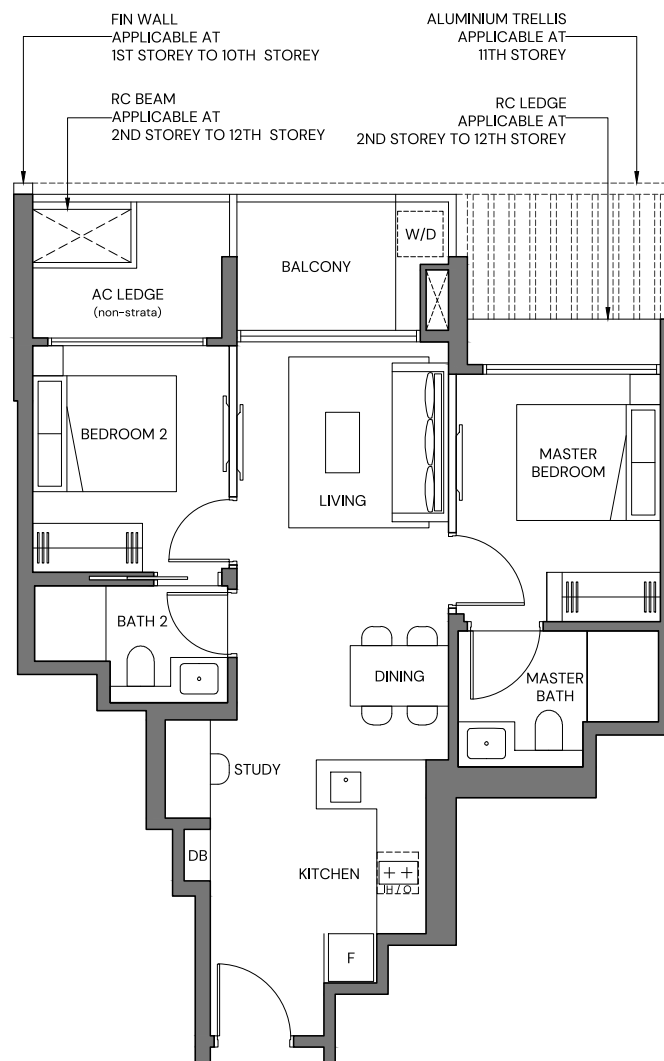


2-Bedroom Premium

TYPE 2BR-Pa
62 sqm / 667 sqft

BLK 51 #02-04 - #12-04
BLK 53 #02-12 - #12-12
BLK 55 #02-20 - #12-20
BLK 57 #02-29* - #12-29*

*Mirrored unit



0 1 5M

AREA INCLUDES PRIVATE ENCLOSED SPACE (PES) OR BALCONY, WHERE APPLICABLE. ALL AC LEDGES AND RC LEDGES (NON-LOAD BEARING) ARE EXCLUDED FROM STRATA AREA. THE PLANS ARE SUBJECT TO CHANGE AS MAY BE REQUIRED BY RELEVANT AUTHORITIES. ALL AREAS AND MEASUREMENTS STATED HEREIN AS APPROXIMATE AND SUBJECT TO FINAL SURVEY.

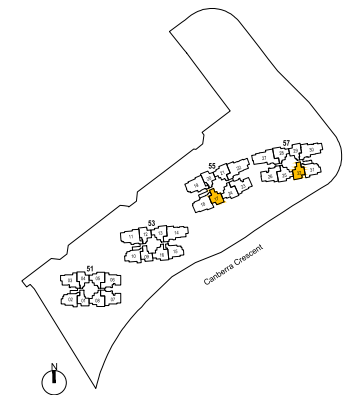
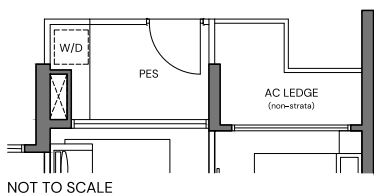
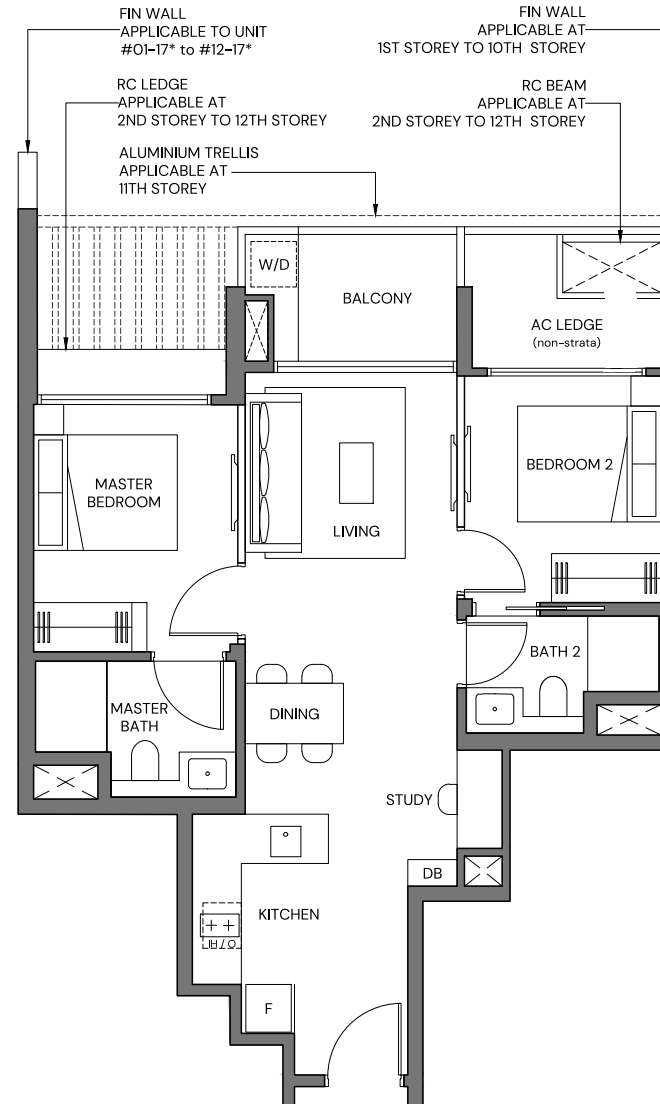
2-Bedroom Premium

TYPE 2BR-Pb (PES) BLK 55 #01-17*
62 sqm / 667 sqft BLK 57 #01-32

TYPE 2BR-Pb BLK 55 #02-17* - #12-17*
62 sqm / 667 sqft BLK 57 #02-32 - #12-32

*Mirrored unit

SHOW UNIT
BLK 55 #02-17 - #10-17 (MIRRORED UNIT)



0 1 5M

AREA INCLUDES PRIVATE ENCLOSED SPACE (PES) OR BALCONY, WHERE APPLICABLE. ALL AC LEDGES AND RC LEDGES (NON-LOAD BEARING) ARE EXCLUDED FROM STRATA AREA. THE PLANS ARE SUBJECT TO CHANGE AS MAY BE REQUIRED BY RELEVANT AUTHORITIES. ALL AREAS AND MEASUREMENTS STATED HEREIN AS APPROXIMATE AND SUBJECT TO FINAL SURVEY.

3-Bedroom Compact

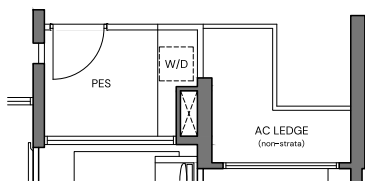
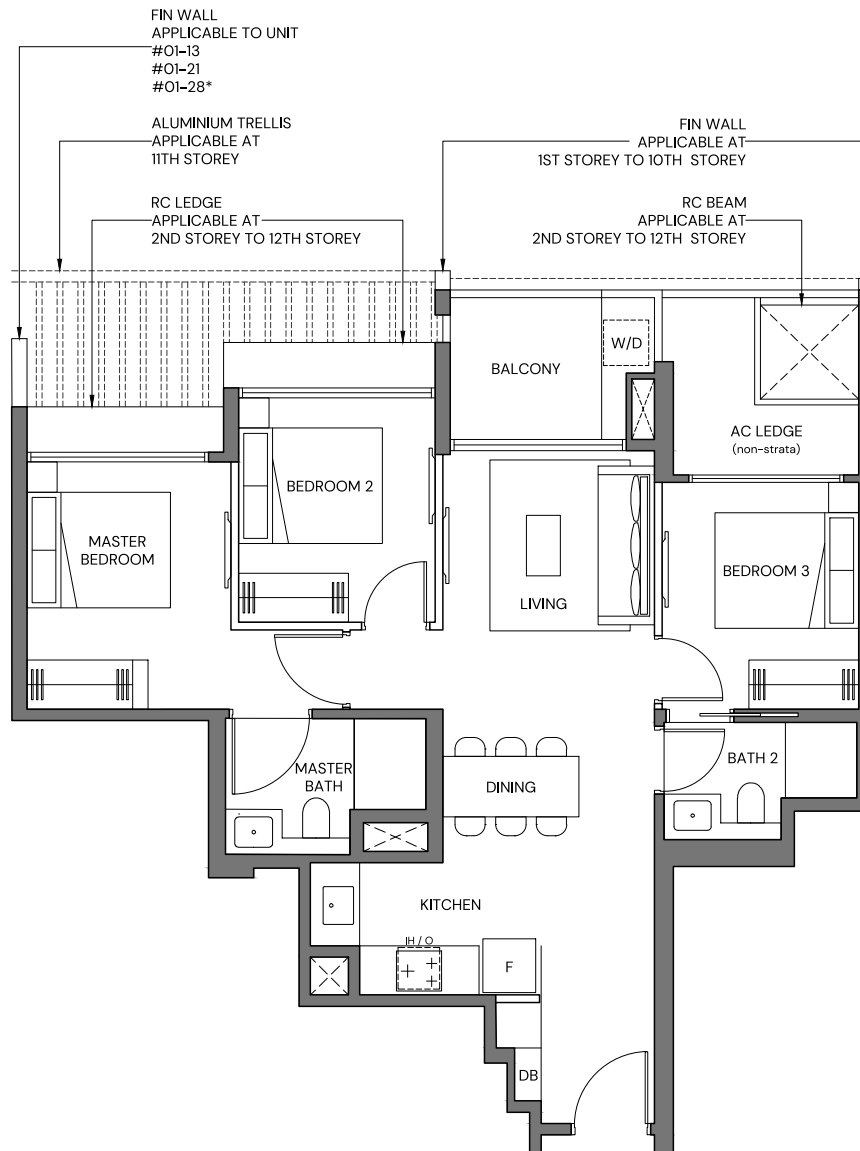
TYPE 3BR-Ca (PES)
74 sqm / 797 sqft

BLK 53 #01-13
BLK 55 #01-21
BLK 57 #01-28*

TYPE 3BR-Ca
74 sqm / 797 sqft

BLK 51 #02-05 - #11-05
BLK 53 #02-13 - #11-13
BLK 55 #02-21 - #11-21
BLK 57 #02-28* - #11-28*

*Mirrored unit



NOT TO SCALE



0 1 5M

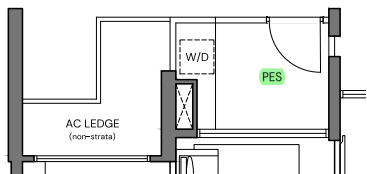
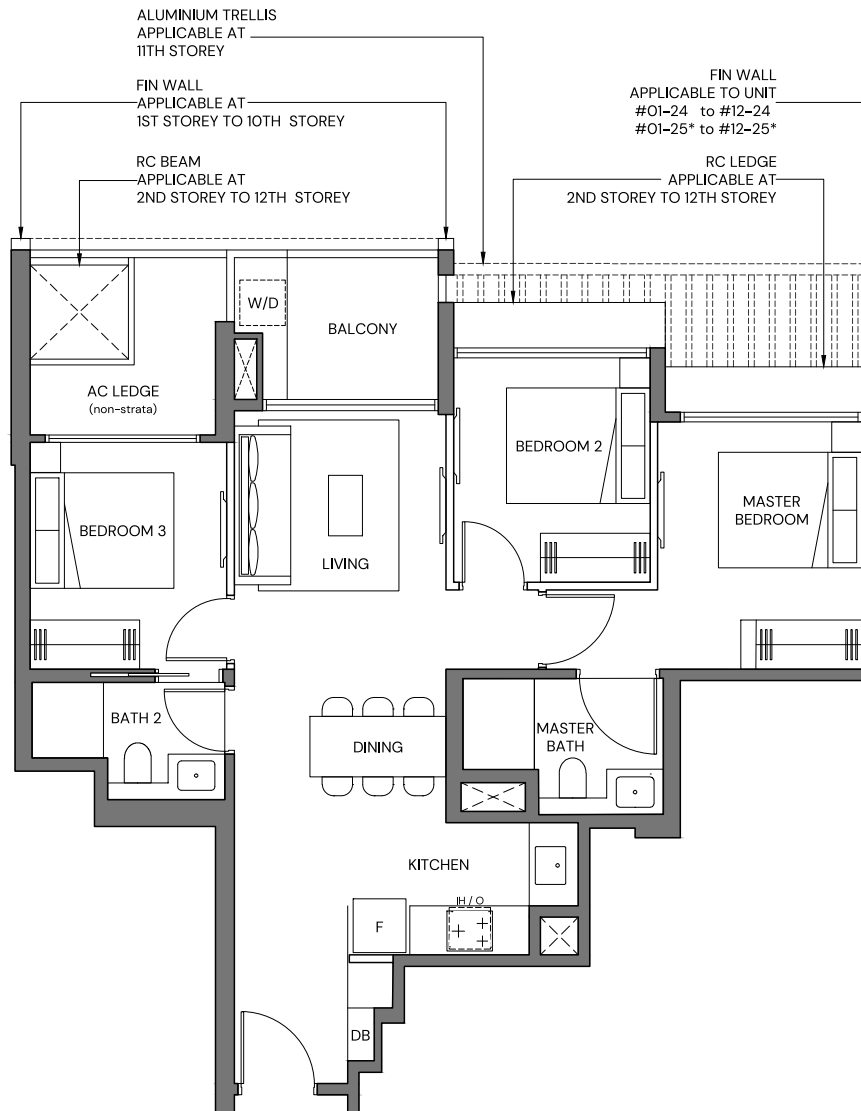
AREA INCLUDES PRIVATE ENCLOSED SPACE (PES) OR BALCONY, WHERE APPLICABLE. ALL AC LEDGES AND RC LEDGES (NON-LOAD BEARING) ARE EXCLUDED FROM STRATA AREA. THE PLANS ARE SUBJECT TO CHANGE AS MAY BE REQUIRED BY RELEVANT AUTHORITIES. ALL AREAS AND MEASUREMENTS STATED HEREIN AS APPROXIMATE AND SUBJECT TO FINAL SURVEY.

3-Bedroom Compact

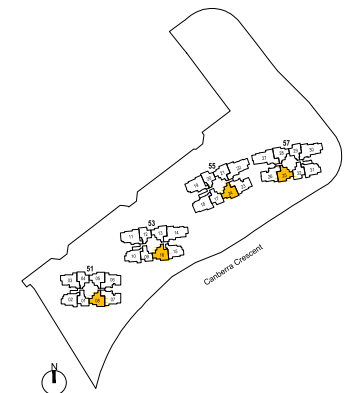
TYPE 3BR-Ca (PES) BLK 53 #01-16
74 sqm / 797 sqft BLK 55 #01-24
BLK 57 #01-25*

TYPE 3BR-Ca BLK 51 #02-08 - #12-08
74 sqm / 797 sqft BLK 53 #02-16 - #12-16
BLK 55 #02-24 - #12-24
BLK 57 #02-25* - #12-25*

*Mirrored unit



NOT TO SCALE



0 1 5M

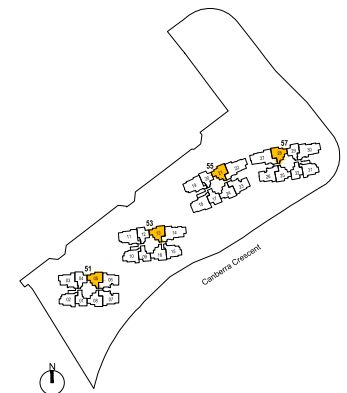
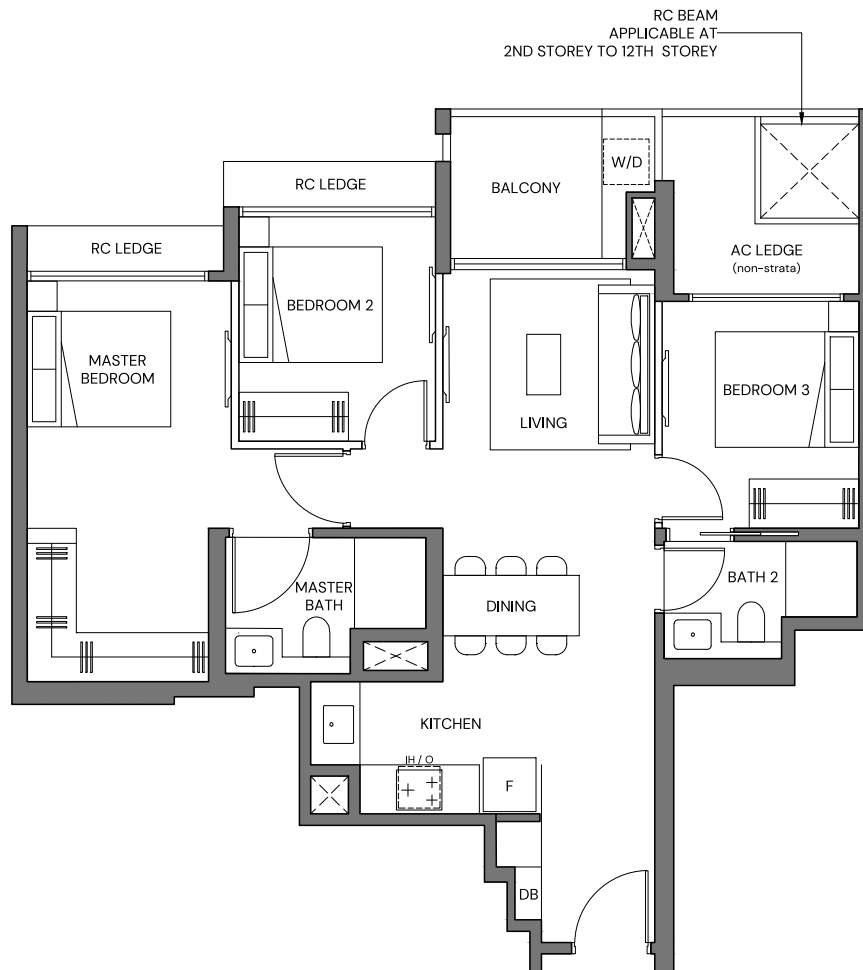
AREA INCLUDES PRIVATE ENCLOSED SPACE (PES) OR BALCONY, WHERE APPLICABLE. ALL AC LEDGES AND RC LEDGES (NON-LOAD BEARING) ARE EXCLUDED FROM STRATA AREA. THE PLANS ARE SUBJECT TO CHANGE AS MAY BE REQUIRED BY RELEVANT AUTHORITIES. ALL AREAS AND MEASUREMENTS STATED HEREIN AS APPROXIMATE AND SUBJECT TO FINAL SURVEY.

3-Bedroom Compact

TYPE 3BR-Ca (P)
81 sqm / 872 sqft

BLK 51 #12-05
BLK 53 #12-13
BLK 55 #12-21
BLK 57 #12-28*

*Mirrored unit



0 1 5M

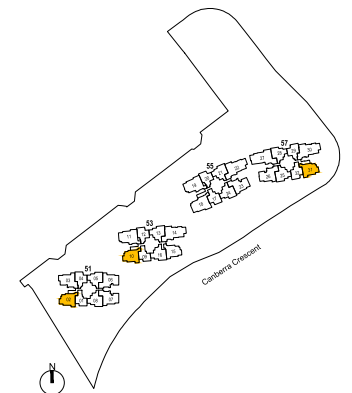
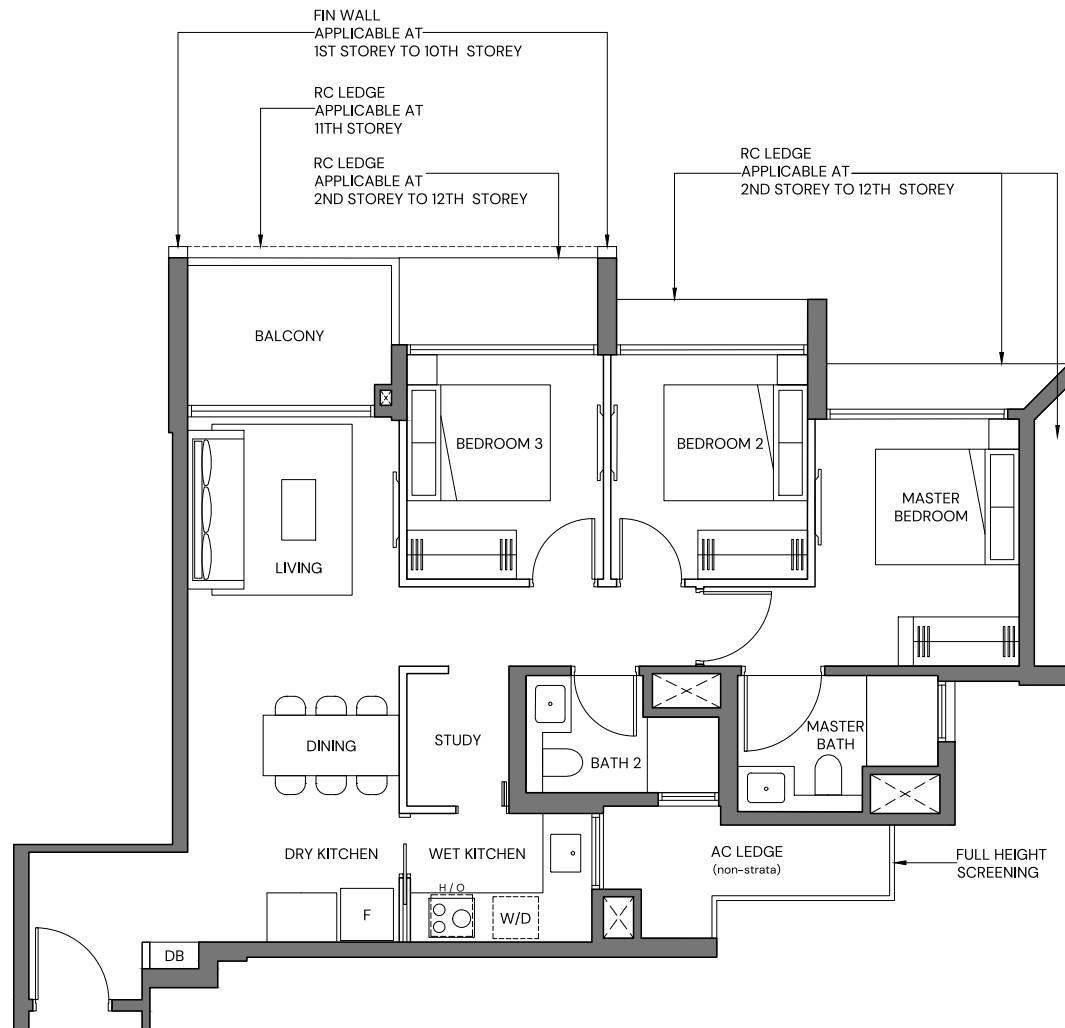
AREA INCLUDES PRIVATE ENCLOSED SPACE (PES) OR BALCONY, WHERE APPLICABLE. ALL AC LEDGES AND RC LEDGES (NON-LOAD BEARING) ARE EXCLUDED FROM STRATA AREA. THE PLANS ARE SUBJECT TO CHANGE AS MAY BE REQUIRED BY RELEVANT AUTHORITIES. ALL AREAS AND MEASUREMENTS STATED HEREIN AS APPROXIMATE AND SUBJECT TO FINAL SURVEY.

3-Bedroom Compact

TYPE 3BR-Cb (PES) BLK 53 #01-10
82 sqm / 883 sqft BLK 57 #01-31*

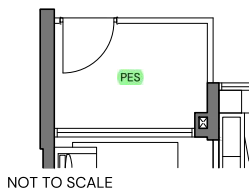
TYPE 3BR-Cb BLK 51 #02-02 - #12-02
82 sqm / 883 sqft BLK 53 #02-10 - #12-10
BLK 57 #02-31* - #12-31*

*Mirrored unit



0 1 5M

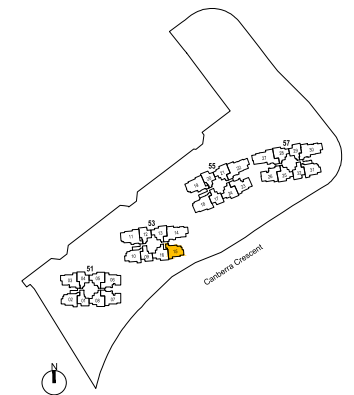
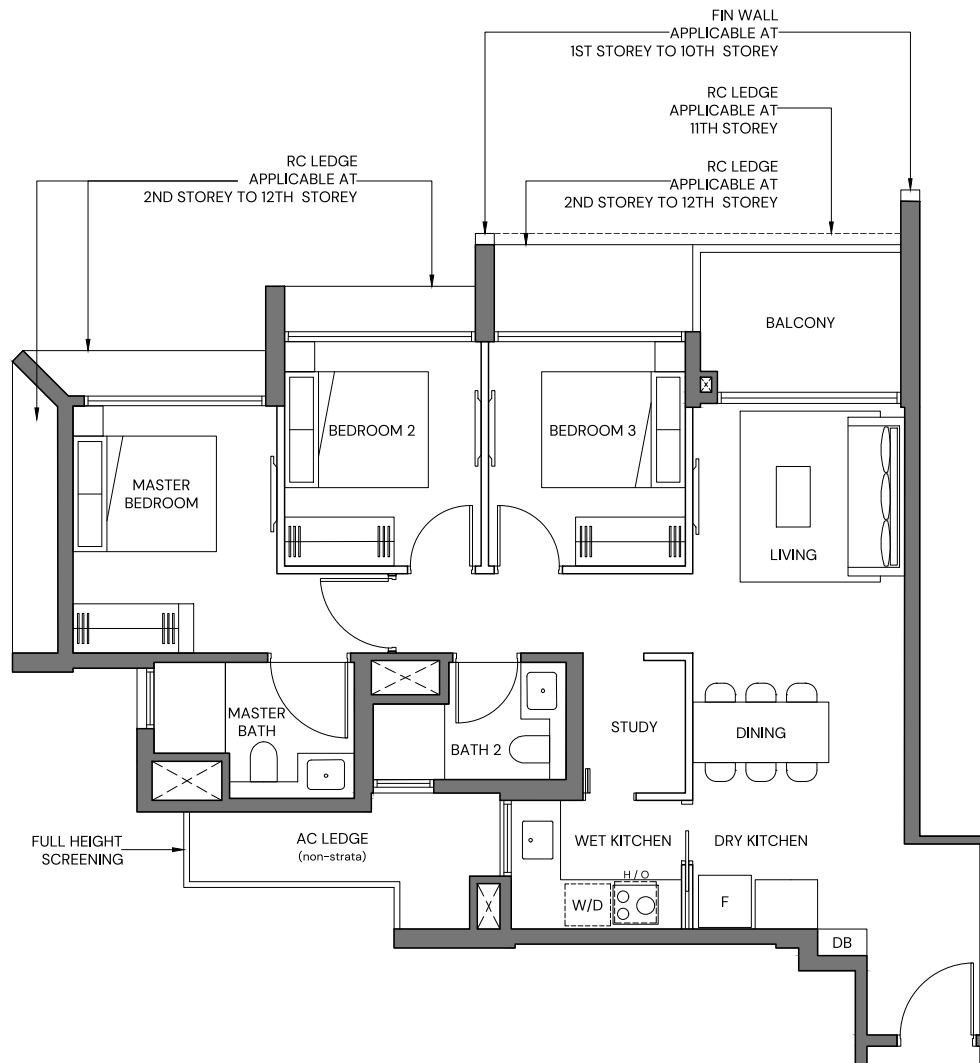
AREA INCLUDES PRIVATE ENCLOSED SPACE (PES) OR BALCONY, WHERE APPLICABLE. ALL AC LEDGES AND RC LEDGES (NON-LOAD BEARING) ARE EXCLUDED FROM STRATA AREA. THE PLANS ARE SUBJECT TO CHANGE AS MAY BE REQUIRED BY RELEVANT AUTHORITIES. ALL AREAS AND MEASUREMENTS STATED HEREIN AS APPROXIMATE AND SUBJECT TO FINAL SURVEY.



3-Bedroom Compact

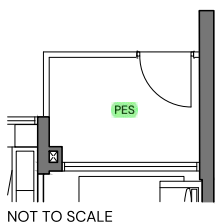
TYPE 3BR-Cc (PES) BLK 53 #01-15
81 sqm / 872 sqft

TYPE 3BR-Cc BLK 53 #02-15 - #12-15
81 sqm / 872 sqft



0 1 5M

AREA INCLUDES PRIVATE ENCLOSED SPACE (PES) OR BALCONY, WHERE APPLICABLE. ALL AC LEDGES AND RC LEDGES (NON-LOAD BEARING) ARE EXCLUDED FROM STRATA AREA. THE PLANS ARE SUBJECT TO CHANGE AS MAY BE REQUIRED BY RELEVANT AUTHORITIES. ALL AREAS AND MEASUREMENTS STATED HEREIN AS APPROXIMATE AND SUBJECT TO FINAL SURVEY.

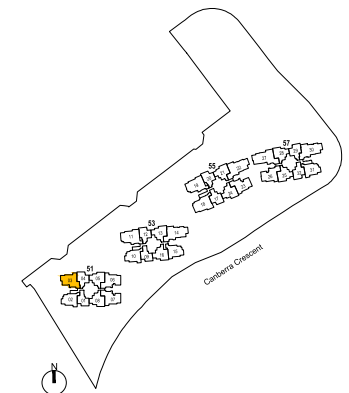
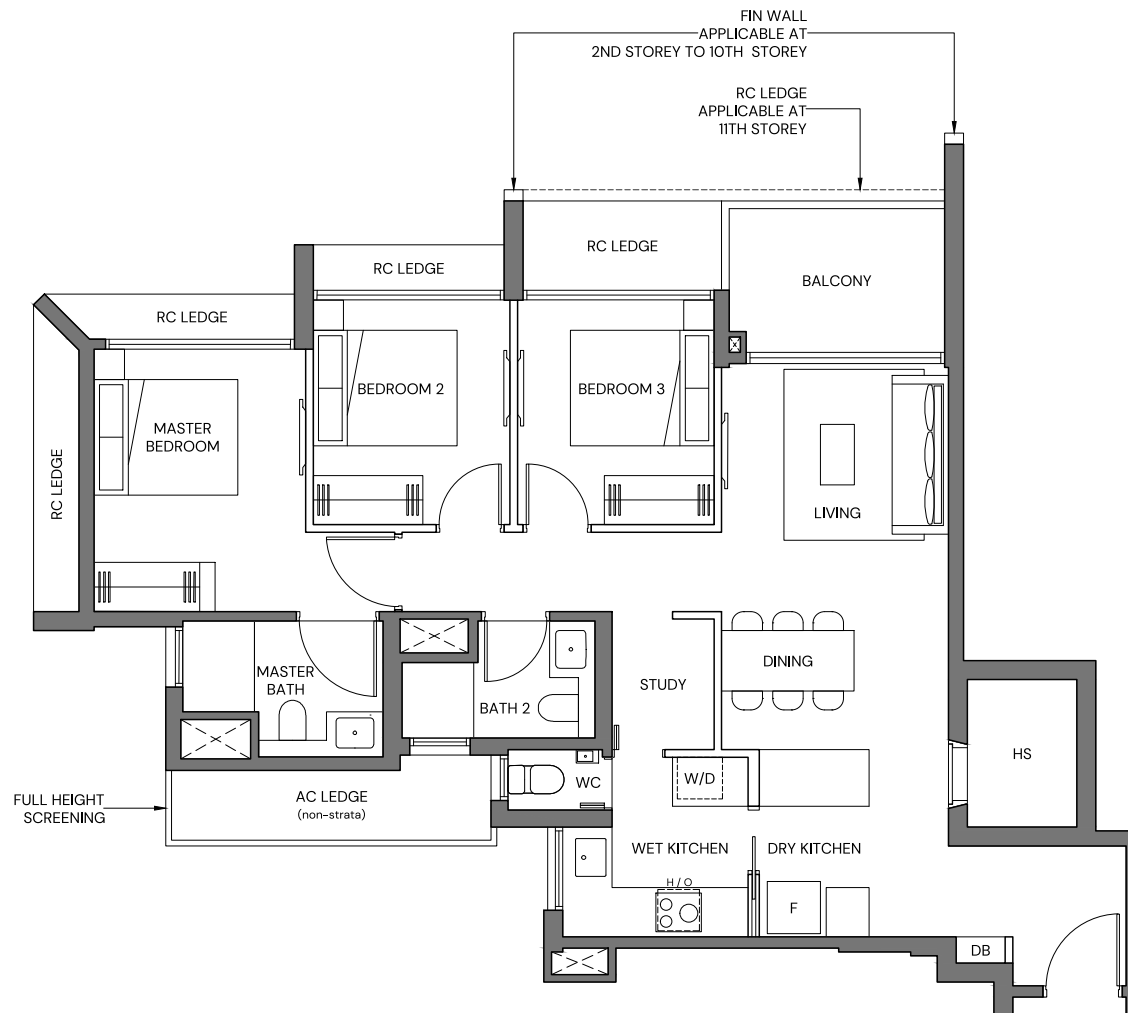


3-Bedroom Premium

TYPE 3BR-Sa

BLK 51 #02-03 - #12-03

92 sqm / 990 sqft



AREA INCLUDES PRIVATE ENCLOSED SPACE (PES) OR BALCONY, WHERE APPLICABLE. ALL AC LEDGES AND RC LEDGES (NON-LOAD BEARING) ARE EXCLUDED FROM STRATA AREA. THE PLANS ARE SUBJECT TO CHANGE AS MAY BE REQUIRED BY RELEVANT AUTHORITIES. ALL AREAS AND MEASUREMENTS STATED HEREIN AS APPROXIMATE AND SUBJECT TO FINAL SURVEY.

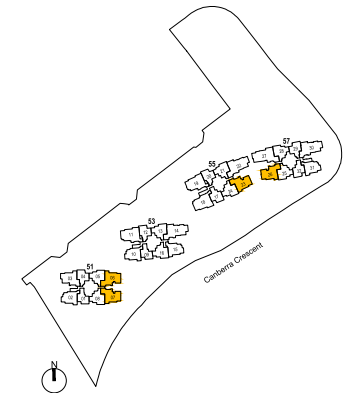
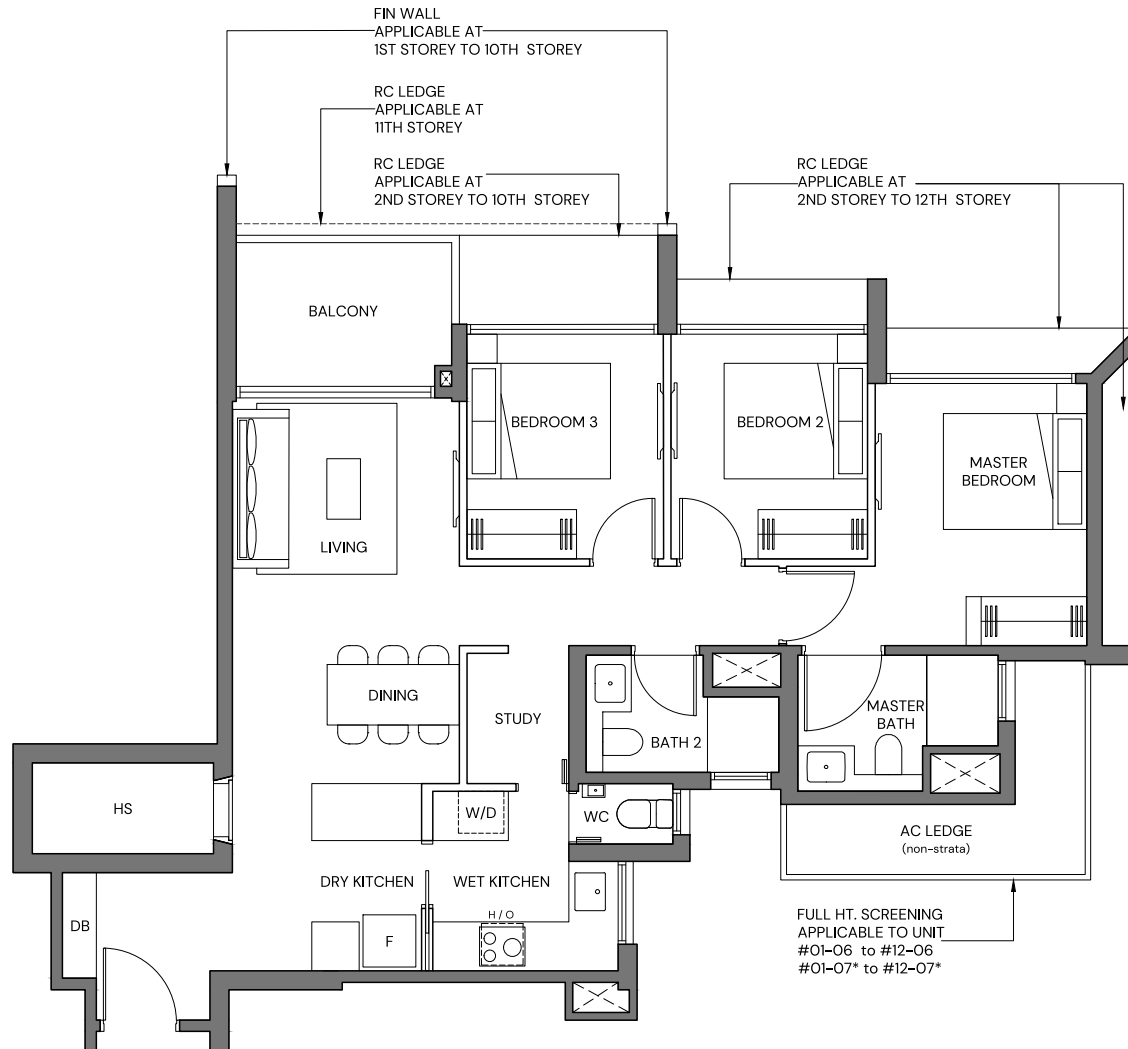
3-Bedroom Premium

TYPE 3BR-Sb (PES) BLK 55 #01-23*
92 sqm / 990 sqft BLK 57 #01-26

TYPE 3BR-Sb BLK 51 #02-06 - #12-06
92 sqm / 990 sqft BLK 51 #02-07* - #12-07*
 BLK 55 #02-23* - #12-23*
 BLK 57 #02-26 - #12-26

*Mirrored unit

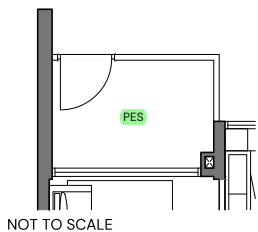
SHOW UNIT
BLK 51 #02-07 - #12-07 (MIRRORED UNIT)



0 1 5M

| | |

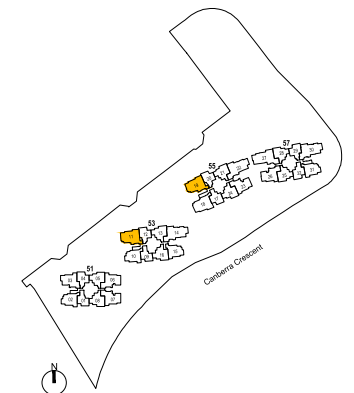
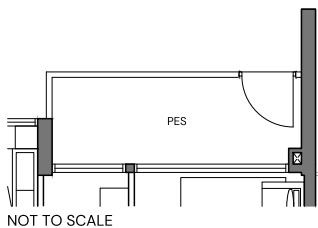
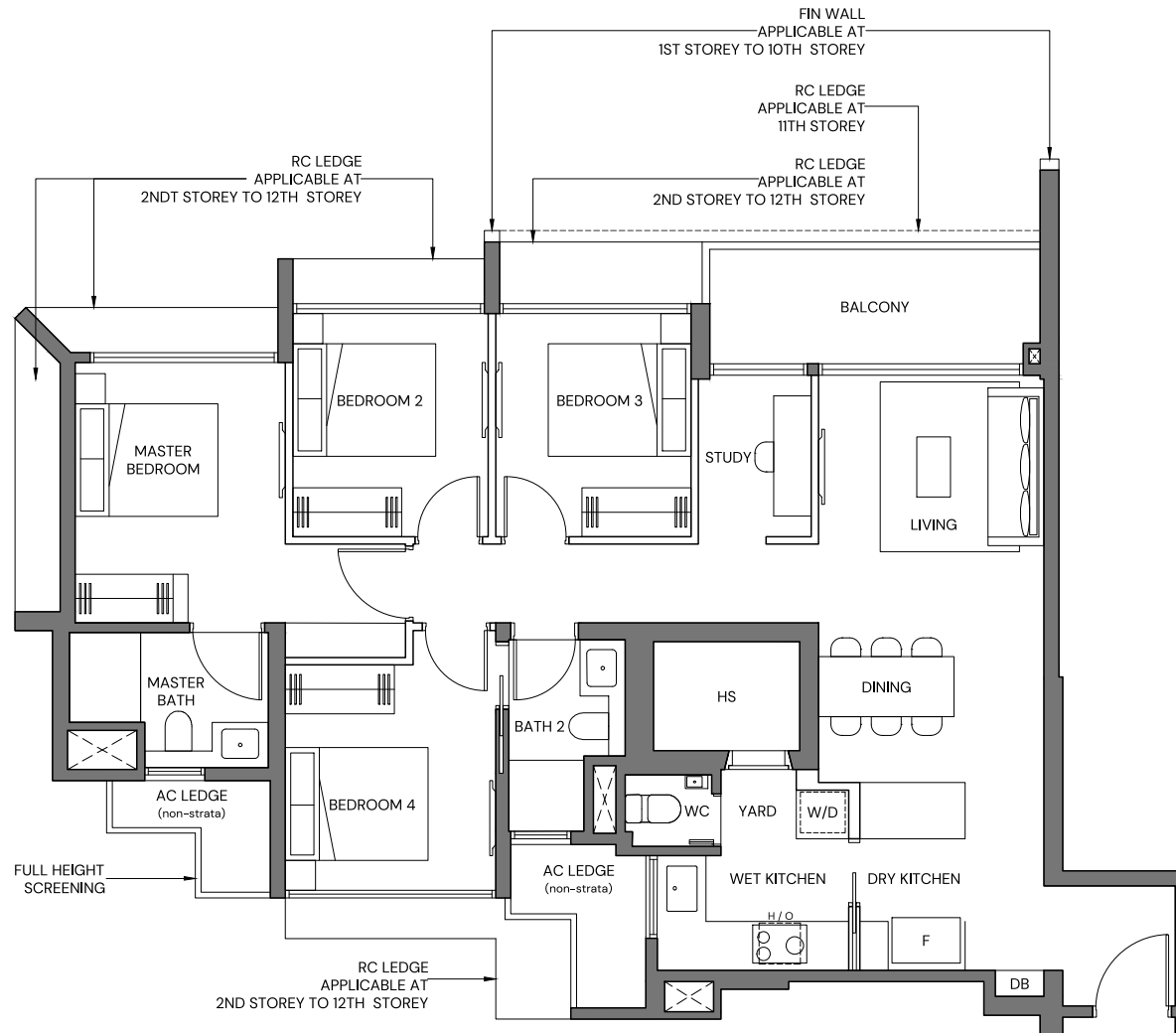
AREA INCLUDES PRIVATE ENCLOSED SPACE (PES) OR BALCONY, WHERE APPLICABLE. ALL AC LEDGES AND RC LEDGES (NON-LOAD BEARING) ARE EXCLUDED FROM STRATA AREA. THE PLANS ARE SUBJECT TO CHANGE AS MAY BE REQUIRED BY RELEVANT AUTHORITIES. ALL AREAS AND MEASUREMENTS STATED HEREIN AS APPROXIMATE AND SUBJECT TO FINAL SURVEY.



4-Bedroom Compact

TYPE 4BR-Ca (PES) BLK 53 #01-11
108 sqm / 1163 sqft BLK 55 #01-19

TYPE 4BR-Ca BLK 53 #02-11 - #12-11
108 sqm / 1163 sqft BLK 55 #02-19 - #12-19

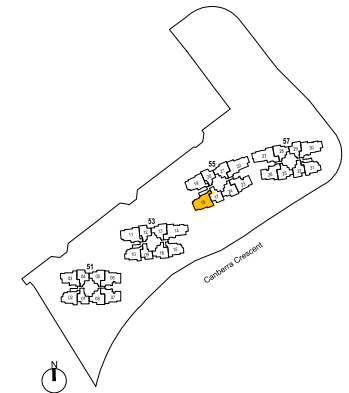
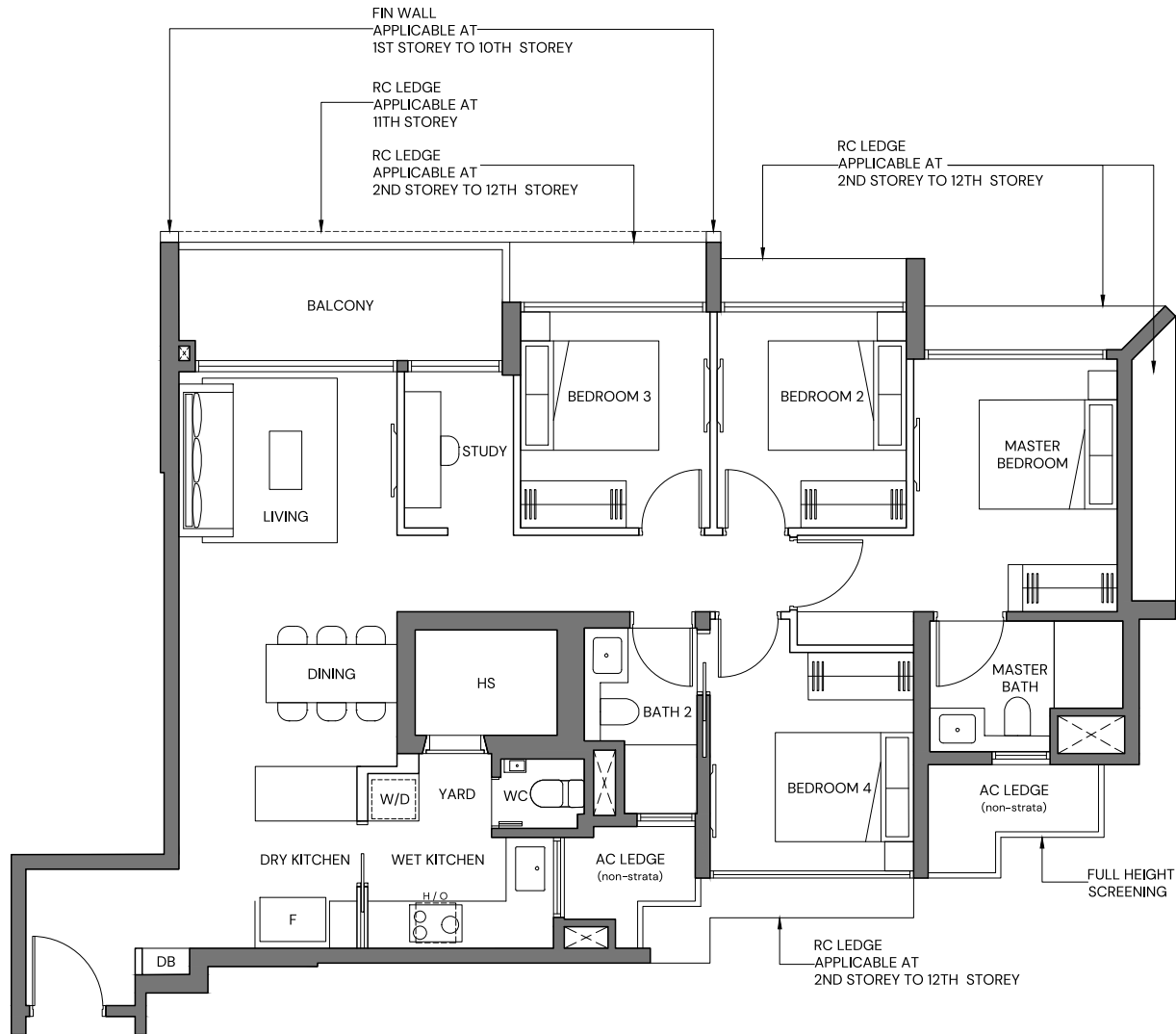


AREA INCLUDES PRIVATE ENCLOSED SPACE (PES) OR BALCONY, WHERE APPLICABLE. ALL AC LEDGES AND RC LEDGES (NON-LOAD BEARING) ARE EXCLUDED FROM STRATA AREA. THE PLANS ARE SUBJECT TO CHANGE AS MAY BE REQUIRED BY RELEVANT AUTHORITIES. ALL AREAS AND MEASUREMENTS STATED HEREIN AS APPROXIMATE AND SUBJECT TO FINAL SURVEY.

4-Bedroom Compact

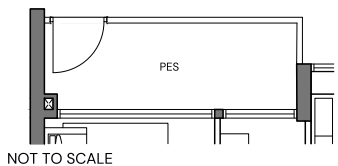
TYPE 4BR-Cb (PES) BLK 55 #01-18
109 sqm / 1173 sqft

TYPE 4BR-Cb BLK 55 #02-18 - #12-18
109 sqm / 1173 sqft



A horizontal timeline with three tick marks labeled 0, 1, and 5M from left to right.

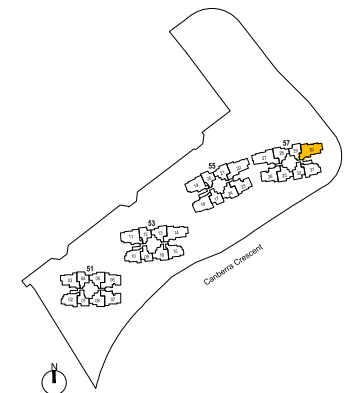
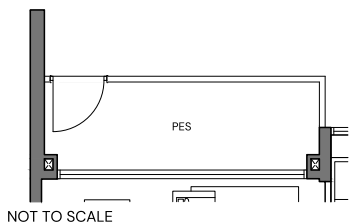
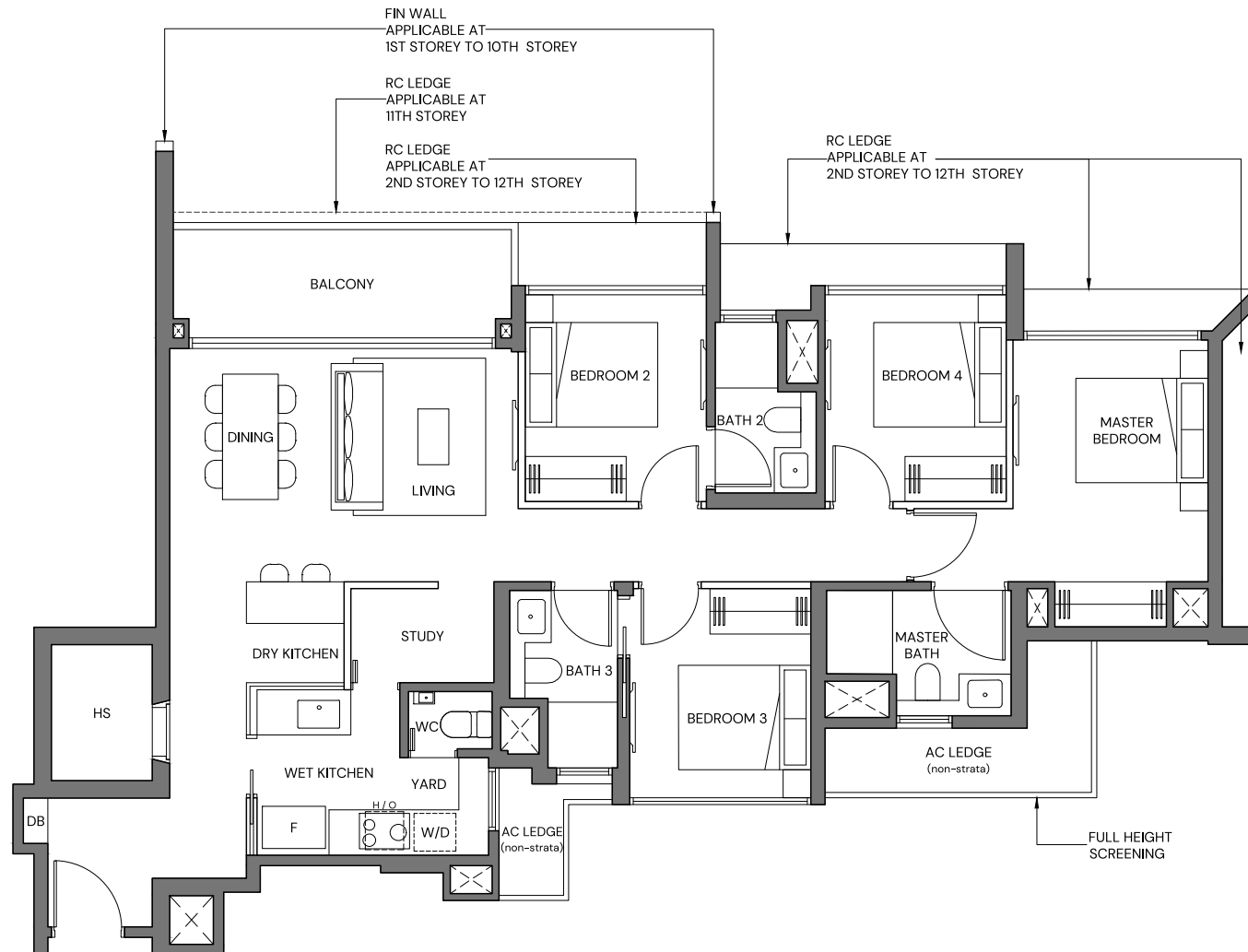
AREA INCLUDES PRIVATE ENCLOSED SPACE (PES) OR BALCONY, WHERE APPLICABLE. ALL AC LEDGES AND RC LEDGES (NON-LOAD BEARING) ARE EXCLUDED FROM STRATA AREA. THE PLANS ARE SUBJECT TO CHANGE AS MAY BE REQUIRED BY RELEVANT AUTHORITIES. ALL AREAS AND MEASUREMENTS STATED HEREIN AS APPROXIMATE AND SUBJECT TO FINAL SURVEY.



4-Bedroom Standard

TYPE 4BR-Sa (PES) BLK 57 #01-30
113 sqm / 1216 sqft

TYPE 4BR-Sa BLK 57 #02-30 - #12-30
113 sqm / 1216 sqft



0 1 5M

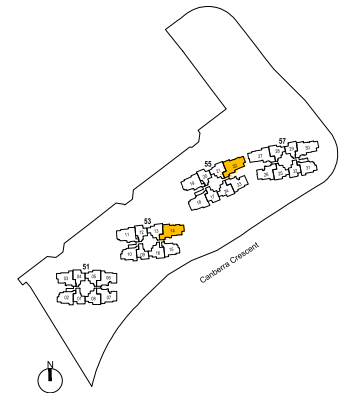
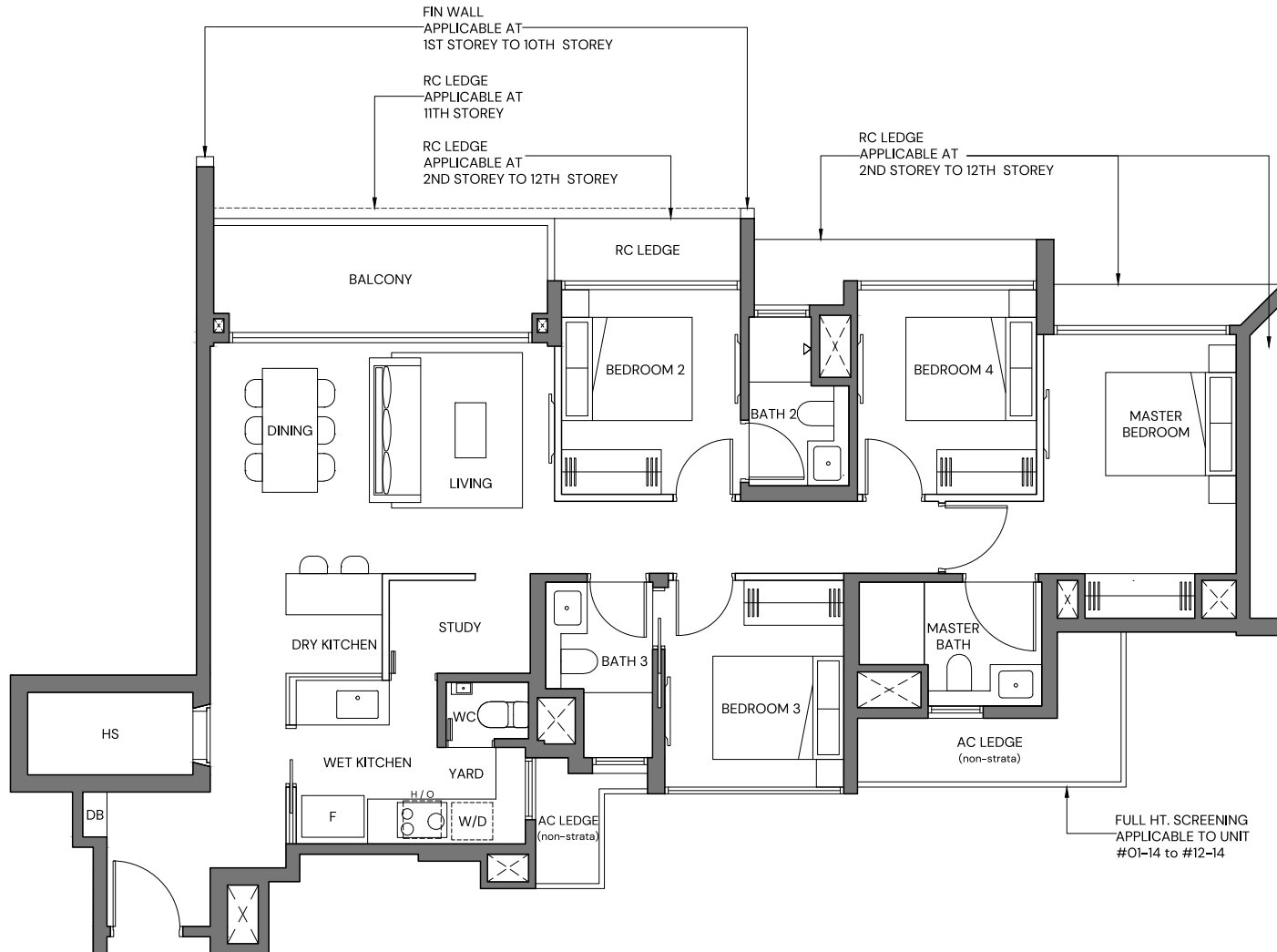
AREA INCLUDES PRIVATE ENCLOSED SPACE (PES) OR BALCONY, WHERE APPLICABLE. ALL AC LEDGES AND RC LEDGES (NON-LOAD BEARING) ARE EXCLUDED FROM STRATA AREA. THE PLANS ARE SUBJECT TO CHANGE AS MAY BE REQUIRED BY RELEVANT AUTHORITIES. ALL AREAS AND MEASUREMENTS STATED HEREIN AS APPROXIMATE AND SUBJECT TO FINAL SURVEY.

4-Bedroom Standard

TYPE 4BR-Sb (PES) BLK 53 #01-14
113 sqm / 1216 sqft BLK 55 #01-22

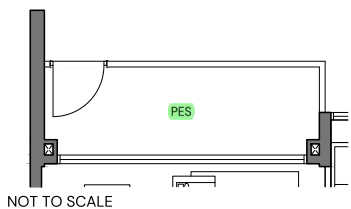
TYPE 4BR-Sb BLK 53 #02-14 - #12-14
113 sqm / 1216 sqft BLK 55 #02-22 - #12-22

SHOW UNIT
BLK 53 #02-14 - #12-14



0 1 5M

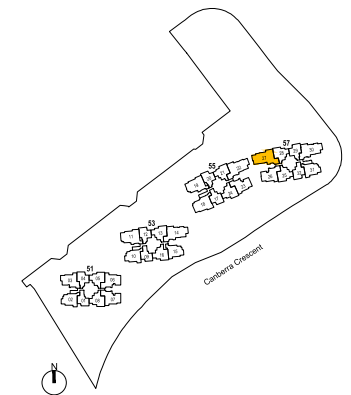
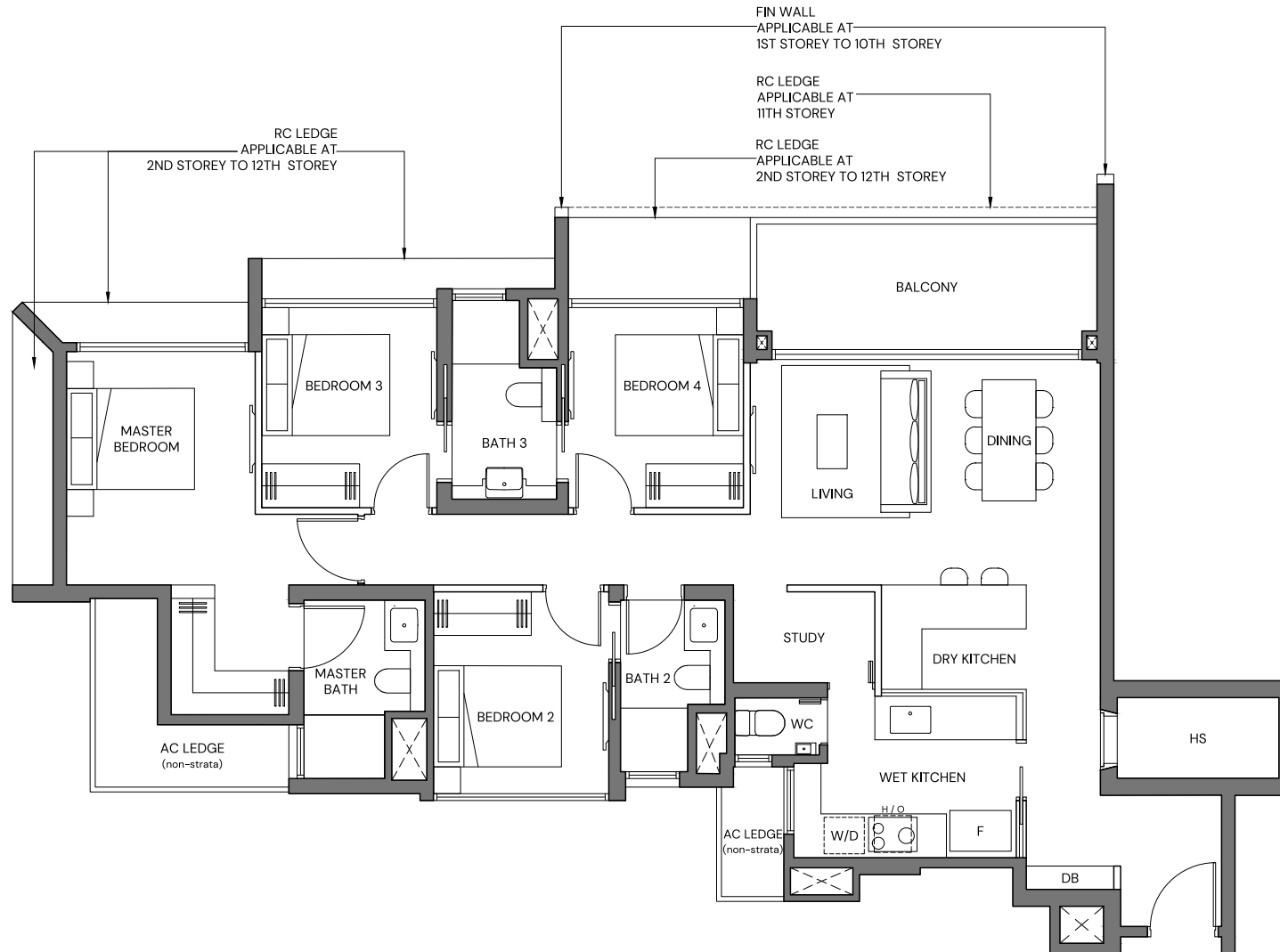
AREA INCLUDES PRIVATE ENCLOSED SPACE (PES) OR BALCONY, WHERE APPLICABLE. ALL AC LEDGES AND RC LEDGES (NON-LOAD BEARING) ARE EXCLUDED FROM STRATA AREA. THE PLANS ARE SUBJECT TO CHANGE AS MAY BE REQUIRED BY RELEVANT AUTHORITIES. ALL AREAS AND MEASUREMENTS STATED HEREIN AS APPROXIMATE AND SUBJECT TO FINAL SURVEY.



4-Bedroom Premium

TYPE 4BR-P (PES) BLK 57 #01-27
123 sqm / 1324 sqft

TYPE 4BR-P BLK 57 #02-27 - #12-27
123 sqm / 1324 sqft



0 1 5M

AREA INCLUDES PRIVATE ENCLOSED SPACE (PES) OR BALCONY, WHERE APPLICABLE. ALL AC LEDGES AND RC LEDGES (NON-LOAD BEARING) ARE EXCLUDED FROM STRATA AREA. THE PLANS ARE SUBJECT TO CHANGE AS MAY BE REQUIRED BY RELEVANT AUTHORITIES. ALL AREAS AND MEASUREMENTS STATED HEREIN AS APPROXIMATE AND SUBJECT TO FINAL SURVEY.

