

# CANBERRA

## Crescent Residences



Enter a world where every detail  
elevates your experience





Imagine what you've always  
wanted in a home

A space where contemporary living  
coexists with considerate design

Where each day will be  
better than the next

# CANBERRA Crescent Residences *Elevate your every day*

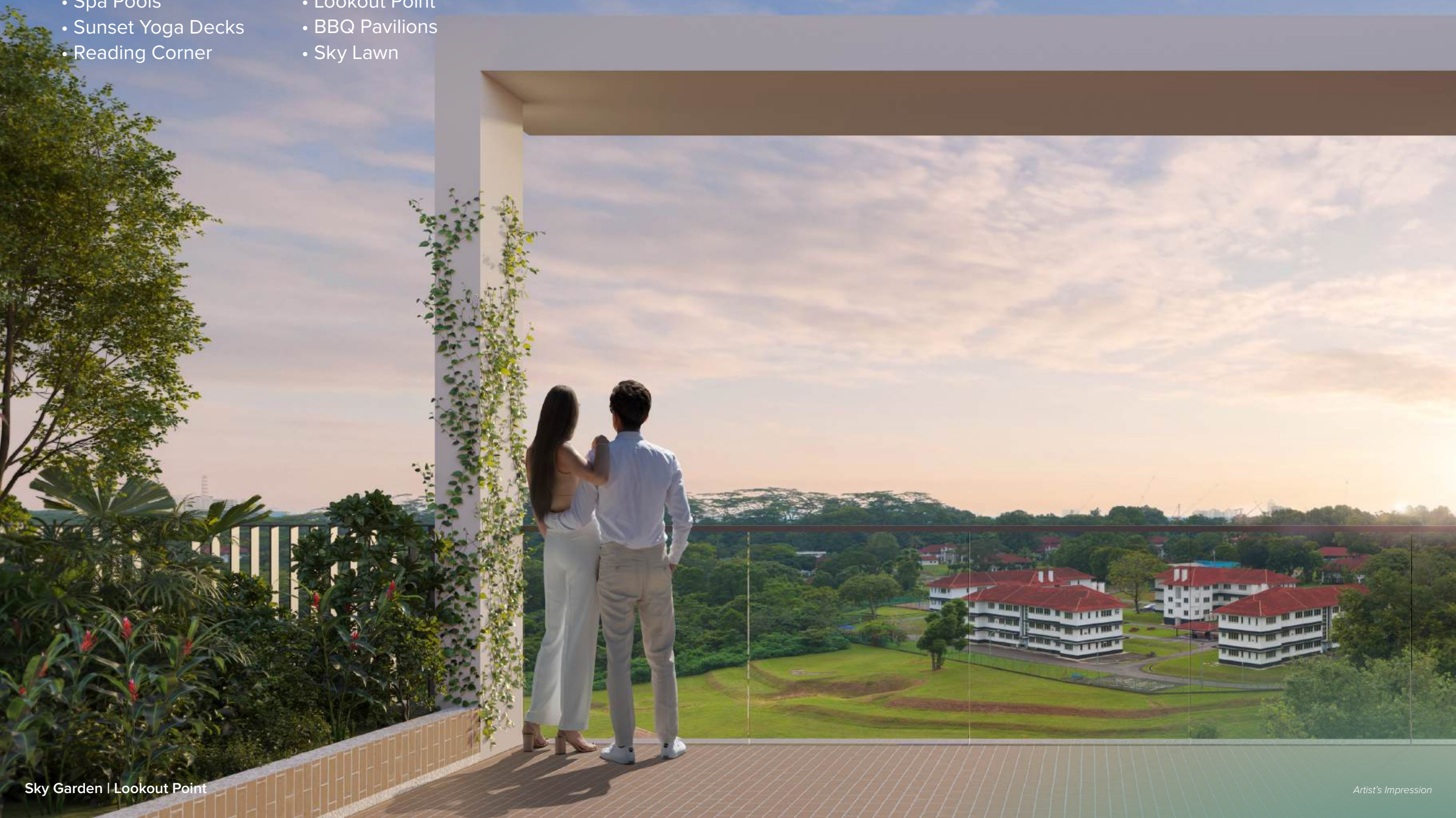




# Mondays are for living it up

Come up to the Sky Garden and soak in lush greenery with stunning views of Sembawang Estate. Experience the beauty of Sembawang's heritage charm from the Lookout Point. Unwind with a good book at the Sky Lounge. Up here, relaxation comes easy!

- 100m Sky Garden
- Spa Pools
- Sunset Yoga Decks
- Reading Corner
- Sky Lounge
- Lookout Point
- BBQ Pavilions
- Sky Lawn





# Sky Garden Plan

## Legend

- |                      |                     |
|----------------------|---------------------|
| 1 Reading Corner     | 7 Lookout Point     |
| 2 Couple Spa Pool    | 8 Gourmet Pavilion  |
| 3 Family Spa Pool    | 9 Culinary Pavilion |
| 4 Sunset Yoga Deck 1 | 10 BBQ Pavilion     |
| 5 Sunset Yoga Deck 2 | 11 Sky Lawn         |
| 6 Sky Lounge         |                     |



0 15 30 45 60m



A 1805-00015-2024-BP01 APPROVED ON 19 MAY 2025  
A 1805-00015-2024-BP02 APPROVED ON 16 JUNE 2025



BBQ Pavilion

Artist's Impression



Family Spa Pool

Artist's Impression



# Tuesdays are for endless adventures

Explore over 170,000 sq ft of open space with five new exciting zones. Stargaze at the Camper's Hut and reconnect with nature at the Floating Meadow. Find adventure and fresh air here.

- Camper's Hut
- Forest Foraging Garden
- BBQ Pavilion
- Meadow Trail
- Meadow Garden
- Floating Meadow



Artist's Impression



Floating Meadow

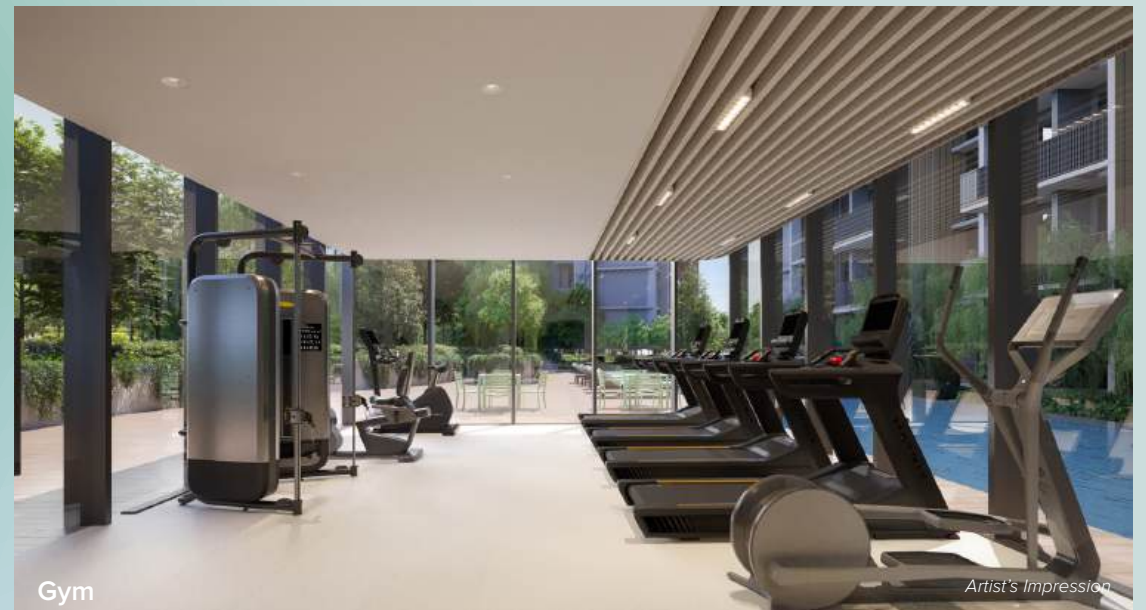
Artist's Impression



# Wednesdays are for making a splash

Discover your oasis of pure bliss. Dive into the 50m lap pool, framed by beautifully crafted decks ideal for an energising swim or a peaceful dip. Work out in the fully equipped gym with a fantastic view of the serene pool. Midweek sure feels like a mini-vacation!

- 50m Lap Pool
- Poolside Deck
- Gym
- Blossom Garden





# Thursdays are for work and play at Canberra Club

Transform your work-from-home routine with our comfortable Social Working Space. Need a break? Recharge at the Entertainment Rooms. When it's time to take it easy, the Canberra Club is the place to be. Find your perfect blend of productivity and fun.

- Clubhouse Lawn
- Function Rooms
- Social Working Space
- Entertainment Rooms







Canberra Club | Lifestyle Zone

Artist's Impression

## *Step into a unique experience at Canberra Club's Lifestyle Zone*

Beyond its diverse leisure, dining and fun offerings, the club cultivates a sense of community. It's a place for connecting and sharing life's moments, where your guests are embraced in a stylish and welcoming atmosphere.

- Family Pool
- Cabanas
- Poolside BBQs
- Mini Golf



Canberra Club | Family Pool

Artist's Impression



Mini Golf

For Illustration Only



# Friday's are for exploring and learning

Step into the exciting Kid's Zone at Canberra Club, a dynamic world where young adventurers explore, learn and engage in fun, physical activities within a thoughtfully designed space that sparks curiosity and creativity.

Located within the residential compound, the Childcare Centre is a convenient sanctuary where your children can thrive in a safe and nurturing environment. It lets you relax, knowing your little ones are just steps away.





## *Find fun at the Kid's Zone of Canberra Club*

Watch your children grow and forge lasting friendships in this safe, welcoming space, where exciting activities and creative play are always on offer.

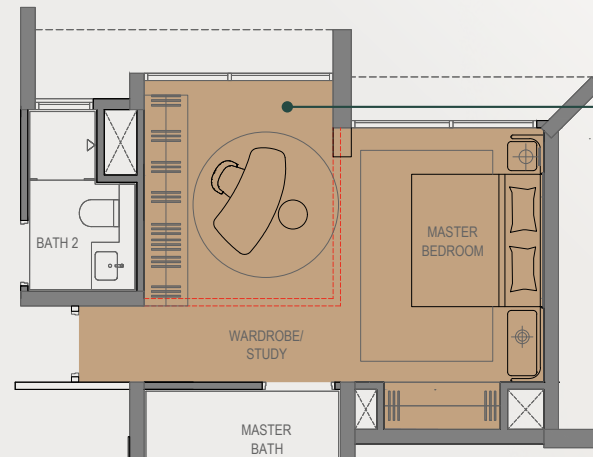
- Kid's Club Hut
- Kid's Pool
- Kid's Water Slide
- Forest Playground





# Saturdays are for seizing the day, surrounded by everything you desire in a home

Picture this: a relaxing Saturday unfolds at home with loved ones, where laughter echoes through a comfortable living space, weaving lasting memories. Beyond these cherished moments, the unit's flexible layout empowers you to effortlessly tailor the space to your evolving needs and personal style.



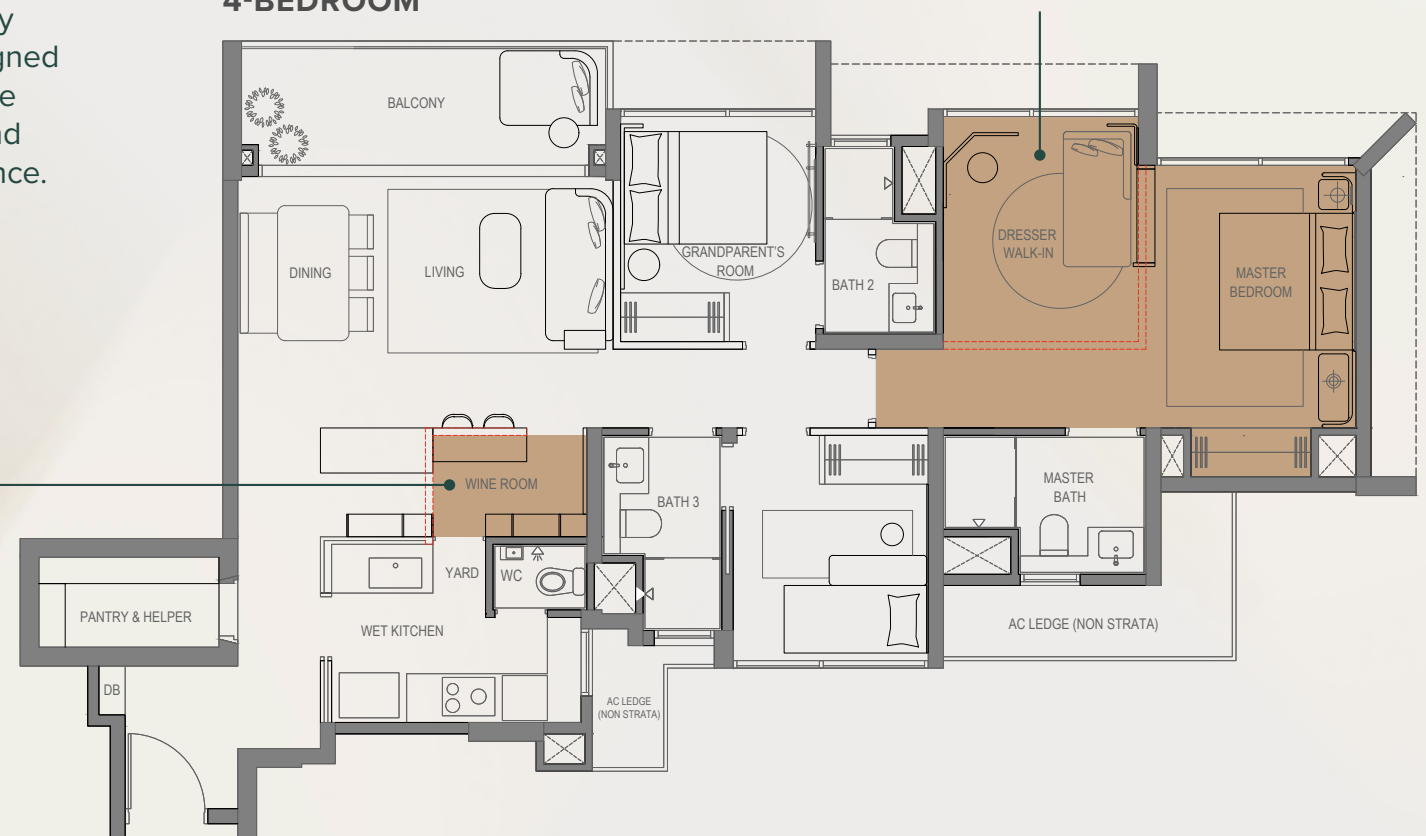
This adaptable layout allows you to combine the Common and Master Bedrooms, creating space for a luxurious walk-in wardrobe, a private dresser and a chic study area.



With a hackable wall, the study effortlessly transforms into an elegant wine room beside the dry kitchen, designed for memorable gatherings and daily indulgence.



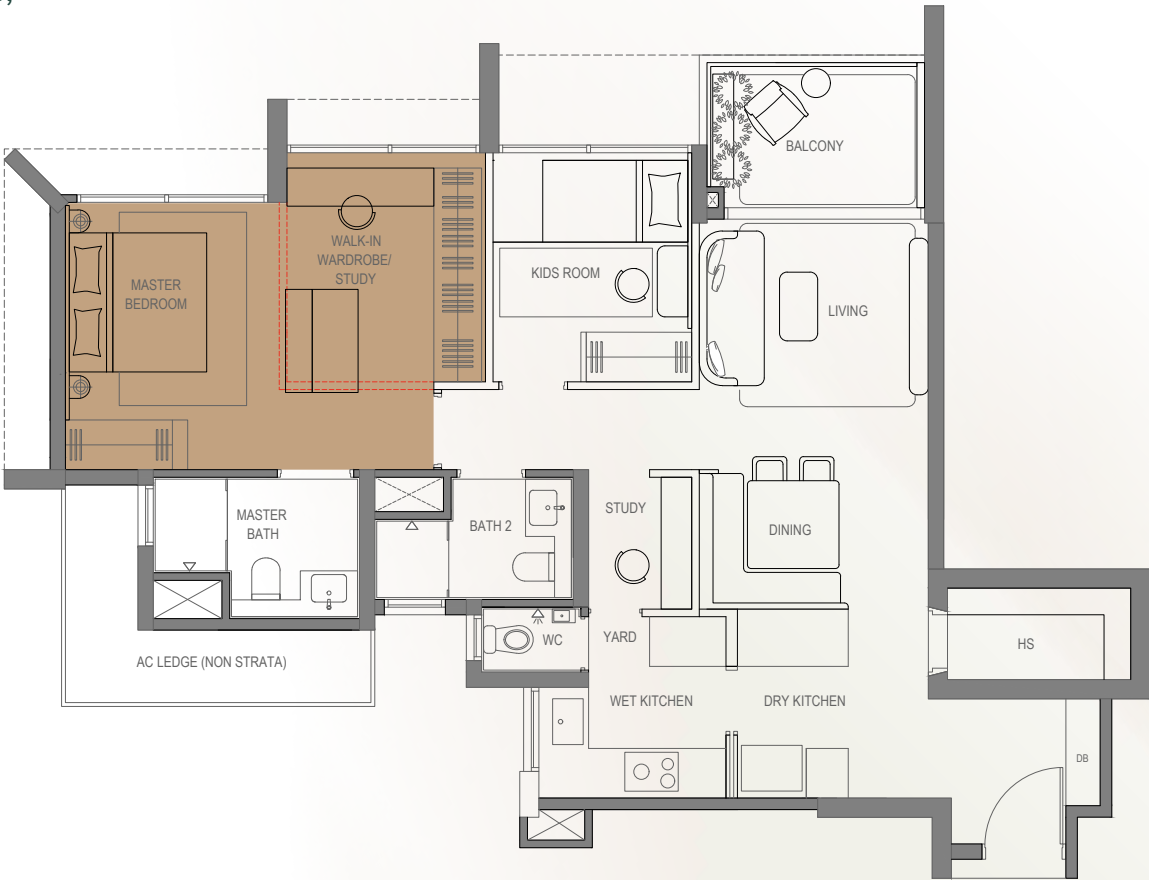
## 4-BEDROOM



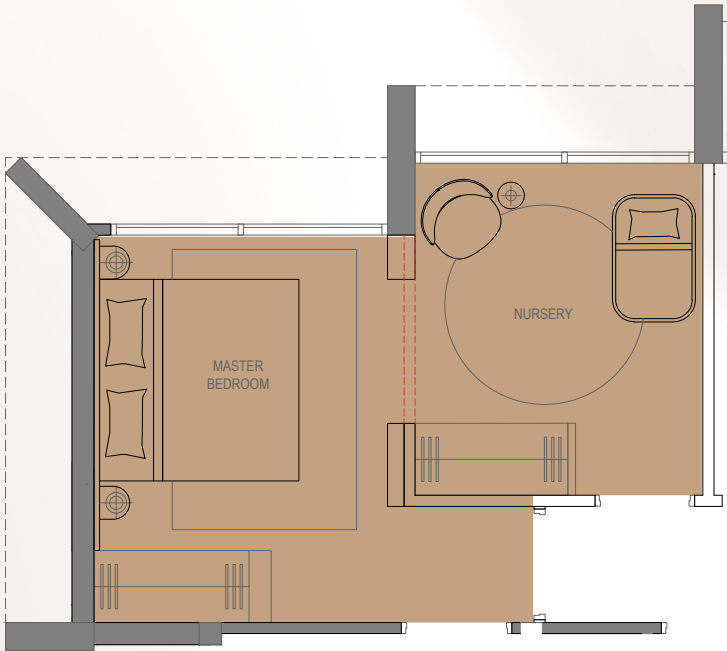


3-BEDROOM

The thoughtful layout allows you to seamlessly combine the Common and Master Bedrooms, transforming the entire space into a lavish walk-in closet and exclusive dressing suite.



Designed with flexibility in mind, a hackable wall allows you to merge the Common and Master Bedrooms, producing a generously sized nursery perfect for close-knit family living.





# Designed for your comfort, styled for your life

State-of-the-art **SMEG appliances** elevate every culinary experience, from snacks to gourmet meals. Thoughtful design touches throughout your home add ease and comfort to everyday life, making each moment feel more special.



Fully-equipped kitchen with SMEG appliances

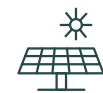
For Illustration Only



Energy-saving appliances



Premium Grohe fittings from Germany and Geberit sanitary wares from Switzerland



Solar powered lighting in common areas



Bespoke balcony cabinet with SMEG washing machine for selected unit types.

For Illustration Only



Premium fittings from Grohe and Geberit

For Illustration Only



## Control and comfort at your fingertips

Smart technology keeps your property secure with automated systems and real-time alerts. Control everything from your phone, whether home or away, effortlessly for complete peace of mind. Relax, knowing your home is always protected.



For Illustration Only

### Smart Home



#### SMART HOME GATEWAY

Control all smart appliances remotely with the Smart Home App



#### SMART DIGITAL LOCKSET

Unlock your door with your mobile app, fingerprint, PIN, key or access card



#### SMART HOME EXPANSION

Unlock the potential of your smart home with future expansions: IP cameras, lighting control and more



#### SMART AIR CONDITIONER CONTROL

Turn on your AC as you leave your office or check if you left it running, all with the app



#### SMART INVITATION

Pre-register visitors for easy QR code entry to the development



#### SMART BOOKING

Easily check availability and book facilities in advance



#### SMART AUDIO VIDEO TELEPHONY

Grant lift lobby access to visitors with a simple tap

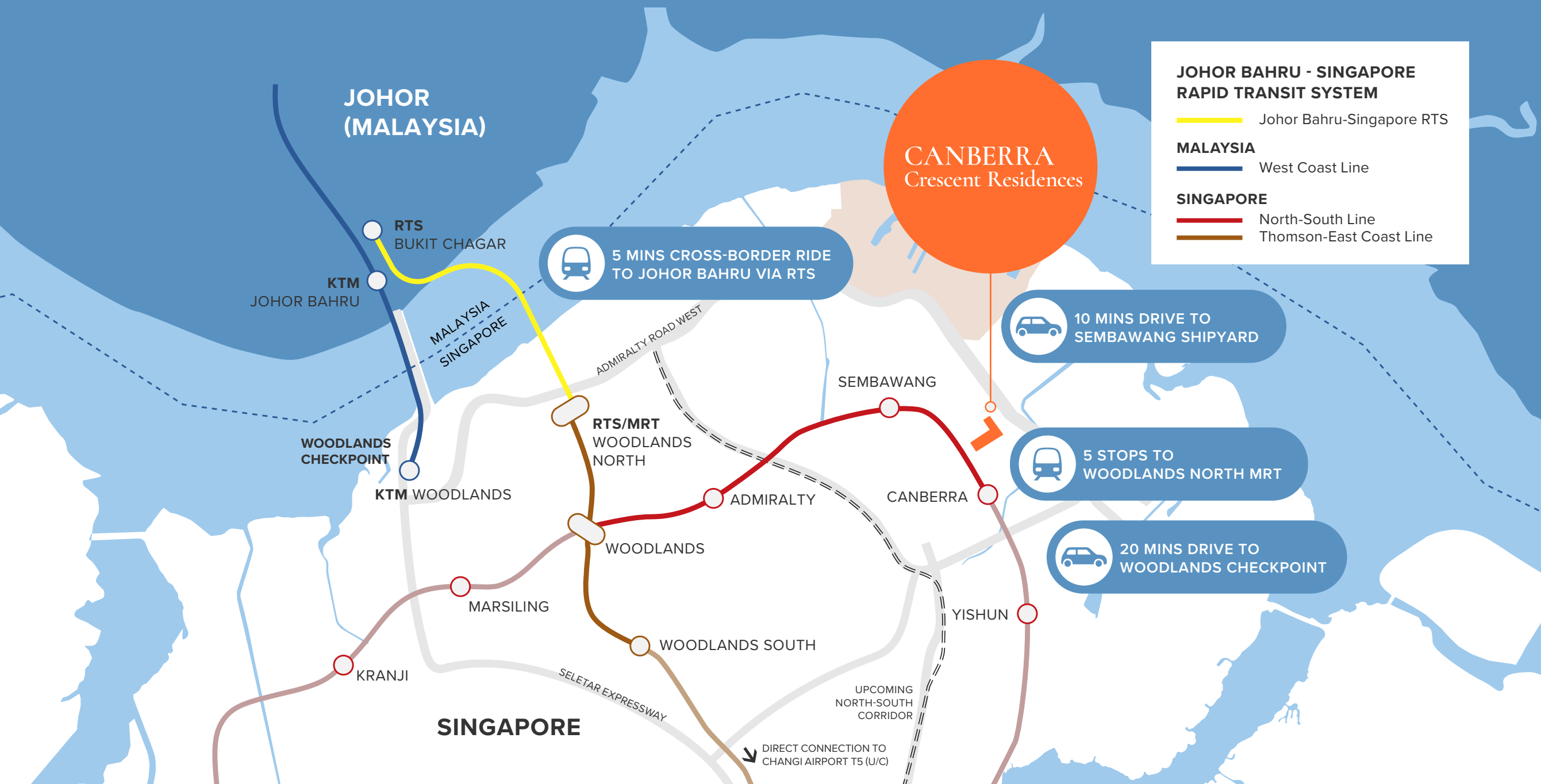


# Sundays are for convenience and nearby discoveries

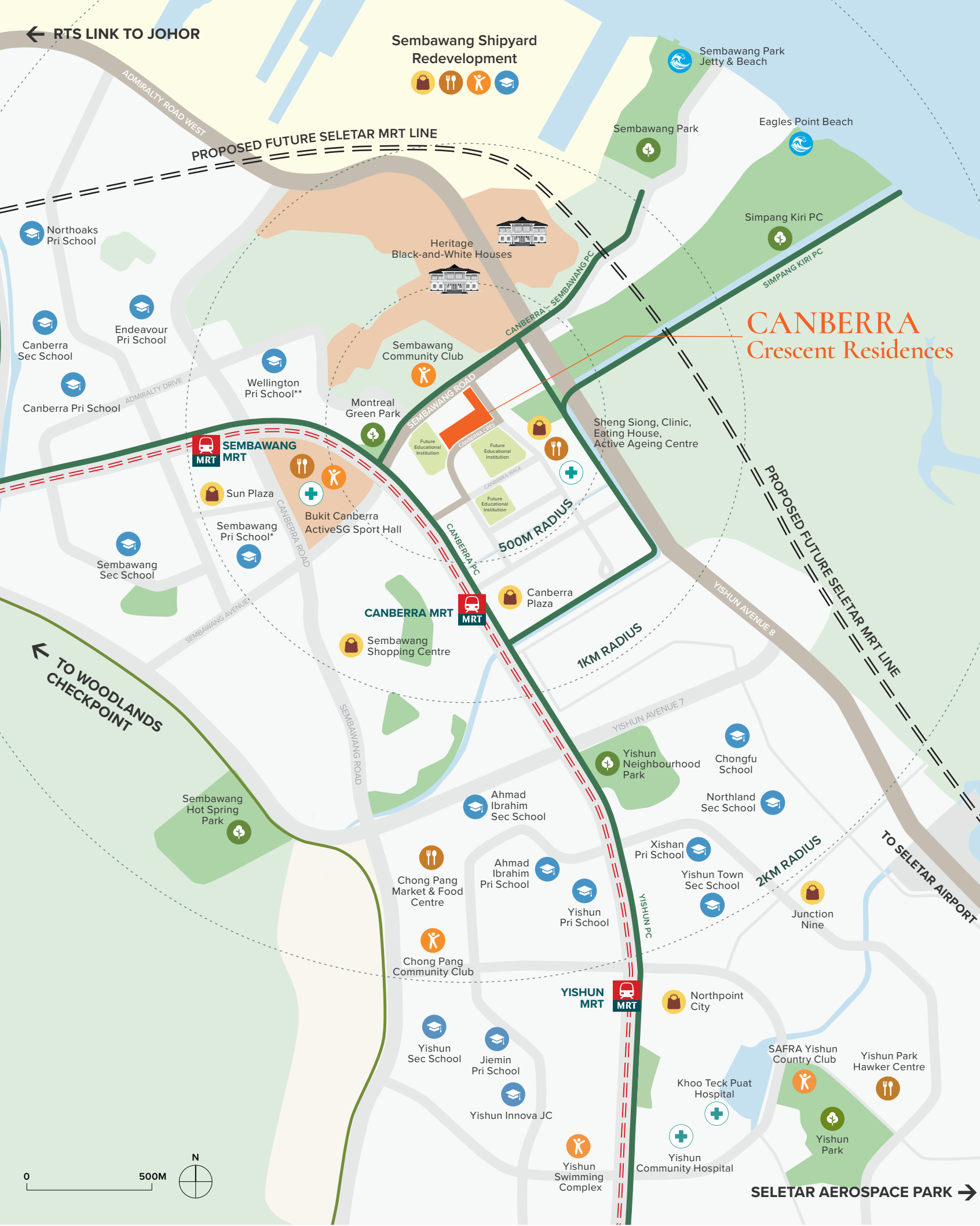
Live at the heart of it all. You are seamlessly connected to MRT stations, major expressways and vibrant shopping districts, everything you need is within easy reach.

## SMOOTHER JOURNEYS TO JB WITH THE RTS LINK

The Johor Bahru-Singapore RTS Link, a dedicated LRT elevated 25 meters above the Straits of Johor from Woodlands North (Singapore) to Bukit Chagar (JB), promises to revolutionise cross-border travel. Easing Causeway congestion and boasting a capacity of 10,000 commuters per hour in each direction will significantly enhance connectivity and foster closer ties and shared growth.







# A vibrant neighbourhood alive with possibilities



## CONNECTIVITY

Canberra MRT (NSL)	10 mins
Sembawang MRT (NSL)	6 mins
Seletar Expressway (SLE)	25 mins to Changi Airport
	15 mins to Seletar Airport
North-South Corridor (NSC)	30 mins from downtown
RTS Link to Johor Bahru	15 mins to Woodlands North MRT
	5 mins to JB via RTS

## Proposed Future Seletar MRT Line

The Seletar Line could serve areas such as Woodlands, Sembawang, Sengkang West, Serangoon North, Whampoa, Kallang and the Greater Southern Waterfront.



## SHOPPING, ENTERTAINMENT & DINING



Sheng Siong  
Bukit Canberra Hawker Centre  
Canberra Plaza (57 outlets, green spaces and water play park)  
Sembawang Shopping Centre  
Sun Plaza  
Chong Pang Market and Food Centre  
Northpoint City  
Junction Nine  
Yishun Park Hawker Centre  
Wisteria Mall



## EDUCATION

Wellington Pri School\*\*  
Endeavour Pri School  
Northoaks Pri School  
Canberra Pri & Sec School  
Sembawang Pri\* & Sec School  
Chongfu School  
Ahmad Ibrahim Pri & Sec School  
Northland Sec School  
Xishan Pri School  
Yishun Pri & Sec School  
Yishun Town Sec School  
Jiemin Pri School  
Yishun Innova JC  
Chung Cheng High School (Yishun)



## RECREATION

Sembawang Community Club  
Bukit Canberra ActiveSG Sport Hall  
• ActiveSG Gym  
• ActiveSG Swimming Complex  
• Sembawang Polyclinic  
• SPD@Canberra Senior Care Centre  
• Hawker Centre



Heritage Black-and-White Houses



## GREEN SPACES

Montreal Green Park  
Sembawang Park  
Sembawang Hot Spring Park  
Yishun Neighbourhood Park  
Yishun Park



## NORTHERN EXPLORER LOOP | 25KM

Canberra PC  
Canberra – Sembawang PC  
Simpang Kiri PC  
Yishun PC



## HEALTHCARE

Khoo Teck Puat Hospital  
Yishun Community Hospital



## BEACHES

Sembawang Park Jetty & Beach  
Eagles Point Beach



## FUTURE DEVELOPMENTS

Sembawang Shipyard Redevelopment

Source: URA Draft Master Plan

These are only conceptual and subject to approval & further review by URA

All subject to final clarification on OneMap:

\*Blocks 51 and 53 are within 1 km and Blocks 55 and 57 are within 2 km

\*\*All 4 blocks are within 1km



## *Timeless charm, unrivalled views*

Coveted north-facing units showcase scenic, unblocked views where conserved iconic black-and-white bungalows are gracefully set within the expansive greenery, enhancing the overall ambience.





# Northern Explorer Loop

## ONE PATH, LIMITLESS DISCOVERY

Dive into Singapore’s amazing Park Connector Network. The 25km Northern Explorer Loop links 11 northern gems, promising incredible nature, heritage and hidden finds. Adventure awaits!



## THE NORTHERN GEMS, ALL WITHIN REACH

Uncover Sembawang Park’s cool beach vibes, then soak in the gorgeous sea views at Eagles Point Beach along the scenic Simpang Kiri PC. Find peaceful moments by Lower Seletar Reservoir Park, enjoy the tranquillity of Montreal Green Park and explore the fascinating arboretum at Yishun Park.

### LOOP HIGHLIGHTS

Admiralty Park	Central Catchment PC
Woodlands Waterfront	Lower Seletar Reservoir Park
Woodlands Town Garden	Yishun Park
Ulu Sembawang PC	Sembawang Park

### MONTREAL GREEN PARK

Prepare to be impressed by all the flora and fauna in this secluded urban sanctuary. Stroll along lovely paths and discover quiet spaces perfect for observing the world passing by.



### EAGLES POINT BEACH

Journey to a secret haven where calm waters, soft breezes and jaw-dropping views across the Johor Strait await. It’s the perfect chill-out spot by the sea for outdoor lovers.



### SEMBAWANG PARK

Take in the chill vibes of this 15-hectare green escape that merges its naval past with natural beauty. Grab a bite at the Beaulieu House, then visit the 30m Sembawang Jetty, great for fishing and crabbing in the sun!



### LOWER SELETAR RESERVOIR PARK

Seeking a peaceful retreat with stunning lake views? Visit Lower Seletar Reservoir Park! This lesser-known locale is a goldmine of abundant foliage and serene scenery, presenting delightful family-oriented activities.



### YISHUN PARK

Calling all thrill seekers! Roam through tropical fruit trees and excellent recreational areas. Visit Singapore’s first arboretum and look at over 70 varieties of Dipterocarp trees!





Photo Courtesy of DP Architects Pte Ltd

# *Kickstart your active life at Bukit Canberra ActiveSG Sport Hall*

A few steps away is Bukit Canberra ActiveSG Sport Hall, a sprawling 12-hectare integrated hub redefining community spaces in Singapore. More than just a park, it's a vibrant nexus of sports, community interaction and lush greenery. With Singapore's largest gym at its heart, indoor and outdoor pools complement it.

It boasts a full suite of amenities and an eye-catching architectural design that seamlessly blends modern design with the surrounding nature, creating a visually stunning and functional masterpiece.



**1,500 sq m**  
SINGAPORE'S LARGEST  
ACTIVESG GYM



**4**  
NUMBER OF  
SWIMMING POOLS



**15**  
COURTS  
INDOOR SPORTS HALL



**100,000**  
SEMBAWANG RESIDENTS  
ARE SERVED BY THIS HUB



# Seamlessly connected to the North Coast Innovation Corridor

Nestled within the thriving North Coast Innovation Corridor, Canberra Crescent Residences provides unmatched access to a world of opportunity. This dynamic economic zone is set for remarkable growth, with high-value industries driving a vibrant hub of innovation and employment.



The upcoming **Johor-Singapore Special Economic Zone (JS-SEZ)** is expected to create 20,000 skilled jobs and boost regional growth.

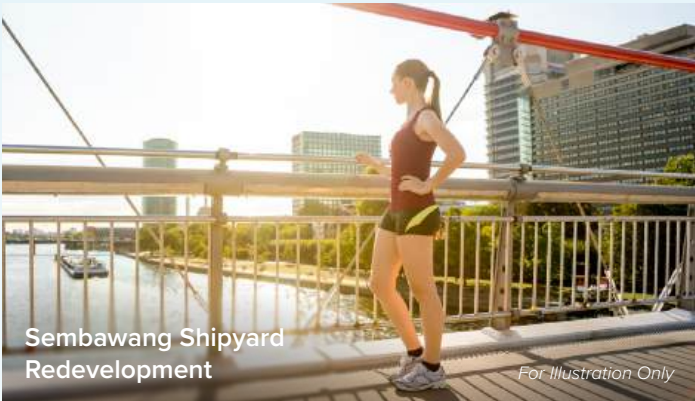


The new **Sembawang North HDB New Town**, under the URA Master Plan, will offer enhanced convenience with new commercial spaces, schools and recreational areas.



Woodlands Regional Centre

For Illustration Only



Sembawang Shipyard Redevelopment

For Illustration Only



Seletar Aerospace Park

For Illustration Only

## CANBERRA Crescent Residences



### 1 SEMBAWANG SHIPYARD REDEVELOPMENT

This historic 86-hectare naval shipyard will become a multi-purpose waterfront destination by 2030, with potential for sports facilities, a nightclub, a cycling path connecting Sembawang and Woodlands, a museum or gym and an expanded Sembawang Park.

🚗 5 mins

### 2 WOODLANDS NORTH COAST

A vibrant mixed-use waterfront precinct connecting people, places and businesses.

🚗 15 mins

### 3 WOODLANDS REGIONAL CENTRE

Singapore's largest regional centre offers emerging business, industry, research and innovation opportunities.

🚗 15 mins

### 4 PROPOSED FUTURE SELETAR MRT LINE

The Seletar MRT line extension to Woodlands North would provide faster access to Malaysia through the Johor Bahru-Singapore RTS Link.

### 5 SELETAR AEROSPACE PARK

A premier aerospace hub, home to over 60 MNCs and local aerospace enterprises.

🚗 15 mins

### 6 PUNGGOL DIGITAL DISTRICT

A 50-hectare smart, mixed-use hub driven by an Open Digital Platform, integrating business, academia and community life.

🚗 20 mins



# Sembawang Shipyard, charting a course for new opportunities

By 2028, Sembawang Shipyard will become The Waterfront Heritage Arboretum for a Resilient Future (W.H.A.R.F.), a vibrant, mixed-use hub that promotes sustainability, culture and community. Discover Singapore's Heritage Waterfront Town, where urban life meets the sea, offering a vibrant "live, work, play" district with public promenades, lush green spaces and a rich maritime history.



## A LIVE-IN HERITAGE WATERFRONT TOWN BY THE SINGAPORE INSTITUTE OF PLANNERS (SIP)

- 1 Experience a dynamic community hub.
- 2 Embrace waterfront living where modern facilities meet spectacular views.
- 3 A dry dock reimagined as a vibrant recreational basin.
- 4 Dive into exciting water activities and find serenity among coastal greenery and the gentle sea breeze.
- 5 Wander down the seaside boulevard, leading you to the waterfront.
- 6 Unwind under the breezy waterfront pavilions.



# Elevate your every day

Discover the perfect blend of comfort, style and convenience at Canberra Crescent Residences, where you can enjoy every day. Whether you're unwinding at home, exploring vibrant community spaces or sampling the excellent range of local eateries, there's always something to brighten your day. Here, every moment is cherished, and every day is a new opportunity to thrive.



For Illustration Only

## CANBERRA Crescent Residences



Canberra Club      Family Pool & Poolside BBQ      Kid's Water Slide      Forest Playground      Artist's Impression





# *Floor Plans*



Unblocked north-facing balcony views

Artist's Impression



51 CANBERRA CRESCENT, 759827

	1	2	3	4	5	6	7	8
12	2BR-C	3BR-Cb	3BR-Sa	2BR-Pa	3BR-Ca (P)	3BR-Sb	3BR-Sb	3BR-Ca
11	2BR-C	3BR-Cb	3BR-Sa	2BR-Pa	3BR-Ca	3BR-Sb	3BR-Sb	3BR-Ca
10	2BR-C	3BR-Cb	3BR-Sa	2BR-Pa	3BR-Ca	3BR-Sb	3BR-Sb	3BR-Ca
9	2BR-C	3BR-Cb	3BR-Sa	2BR-Pa	3BR-Ca	3BR-Sb	3BR-Sb	3BR-Ca
8	2BR-C	3BR-Cb	3BR-Sa	2BR-Pa	3BR-Ca	3BR-Sb	3BR-Sb	3BR-Ca
7	2BR-C	3BR-Cb	3BR-Sa	2BR-Pa	3BR-Ca	3BR-Sb	3BR-Sb	3BR-Ca
6	2BR-C	3BR-Cb	3BR-Sa	2BR-Pa	3BR-Ca	3BR-Sb	3BR-Sb	3BR-Ca
5	2BR-C	3BR-Cb	3BR-Sa	2BR-Pa	3BR-Ca	3BR-Sb	3BR-Sb	3BR-Ca
4	2BR-C	3BR-Cb	3BR-Sa	2BR-Pa	3BR-Ca	3BR-Sb	3BR-Sb	3BR-Ca
3	2BR-C	3BR-Cb	3BR-Sa	2BR-Pa	3BR-Ca	3BR-Sb	3BR-Sb	3BR-Ca
2	2BR-C	3BR-Cb	3BR-Sa	2BR-Pa	3BR-Ca	3BR-Sb	3BR-Sb	3BR-Ca
1	Childcare Centre							

53 CANBERRA CRESCENT, 759828

	9	10	11	12	13	14	15	16
12	2BR-C	3BR-Cb	4BR-Ca	2BR-Pa	3BR-Ca (P)	4BR-Sb	3BR-Cc	3BR-Ca
11	2BR-C	3BR-Cb	4BR-Ca	2BR-Pa	3BR-Ca	4BR-Sb	3BR-Cc	3BR-Ca
10	2BR-C	3BR-Cb	4BR-Ca	2BR-Pa	3BR-Ca	4BR-Sb	3BR-Cc	3BR-Ca
9	2BR-C	3BR-Cb	4BR-Ca	2BR-Pa	3BR-Ca	4BR-Sb	3BR-Cc	3BR-Ca
8	2BR-C	3BR-Cb	4BR-Ca	2BR-Pa	3BR-Ca	4BR-Sb	3BR-Cc	3BR-Ca
7	2BR-C	3BR-Cb	4BR-Ca	2BR-Pa	3BR-Ca	4BR-Sb	3BR-Cc	3BR-Ca
6	2BR-C	3BR-Cb	4BR-Ca	2BR-Pa	3BR-Ca	4BR-Sb	3BR-Cc	3BR-Ca
5	2BR-C	3BR-Cb	4BR-Ca	2BR-Pa	3BR-Ca	4BR-Sb	3BR-Cc	3BR-Ca
4	2BR-C	3BR-Cb	4BR-Ca	2BR-Pa	3BR-Ca	4BR-Sb	3BR-Cc	3BR-Ca
3	2BR-C	3BR-Cb	4BR-Ca	2BR-Pa	3BR-Ca	4BR-Sb	3BR-Cc	3BR-Ca
2	2BR-C	3BR-Cb	4BR-Ca	2BR-Pa	3BR-Ca	4BR-Sb	3BR-Cc	3BR-Ca
1	2BR-C (PES)	3BR-Cb (PES)	4BR-Ca (PES)	1BR	3BR-Ca (PES)	4BR-Sb (PES)	3BR-Cc (PES)	3BR-Ca (PES)

55 CANBERRA CRESCENT, 759829

	17	18	19	20	21	22	23	24
	SKY GARDEN							
12	2BR-Pb	4BR-Cb	4BR-Ca	2BR-Pa	3BR-Ca (P)	4BR-Sb	3BR-Sb	3BR-Ca
11	2BR-Pb	4BR-Cb	4BR-Ca	2BR-Pa	3BR-Ca	4BR-Sb	3BR-Sb	3BR-Ca
10	2BR-Pb	4BR-Cb	4BR-Ca	2BR-Pa	3BR-Ca	4BR-Sb	3BR-Sb	3BR-Ca
9	2BR-Pb	4BR-Cb	4BR-Ca	2BR-Pa	3BR-Ca	4BR-Sb	3BR-Sb	3BR-Ca
8	2BR-Pb	4BR-Cb	4BR-Ca	2BR-Pa	3BR-Ca	4BR-Sb	3BR-Sb	3BR-Ca
7	2BR-Pb	4BR-Cb	4BR-Ca	2BR-Pa	3BR-Ca	4BR-Sb	3BR-Sb	3BR-Ca
6	2BR-Pb	4BR-Cb	4BR-Ca	2BR-Pa	3BR-Ca	4BR-Sb	3BR-Sb	3BR-Ca
5	2BR-Pb	4BR-Cb	4BR-Ca	2BR-Pa	3BR-Ca	4BR-Sb	3BR-Sb	3BR-Ca
4	2BR-Pb	4BR-Cb	4BR-Ca	2BR-Pa	3BR-Ca	4BR-Sb	3BR-Sb	3BR-Ca
3	2BR-Pb	4BR-Cb	4BR-Ca	2BR-Pa	3BR-Ca	4BR-Sb	3BR-Sb	3BR-Ca
2	2BR-Pb	4BR-Cb	4BR-Ca	2BR-Pa	3BR-Ca	4BR-Sb	3BR-Sb	3BR-Ca
1	2BR-Pb (PES)	4BR-Cb (PES)	4BR-Ca (PES)	1BR	3BR-Ca (PES)	4BR-Sb (PES)	3BR-Sb (PES)	3BR-Ca (PES)

57 CANBERRA CRESCENT, 759830

	25	26	27	28	29	30	31	32
	SKY GARDEN							
12	3BR-Ca	3BR-Sb	4BR-P	3BR-Ca (P)	2BR-Pa	4BR-Sa	3BR-Cb	2BR-Pb
11	3BR-Ca	3BR-Sb	4BR-P	3BR-Ca	2BR-Pa	4BR-Sa	3BR-Cb	2BR-Pb
10	3BR-Ca	3BR-Sb	4BR-P	3BR-Ca	2BR-Pa	4BR-Sa	3BR-Cb	2BR-Pb
9	3BR-Ca	3BR-Sb	4BR-P	3BR-Ca	2BR-Pa	4BR-Sa	3BR-Cb	2BR-Pb
8	3BR-Ca	3BR-Sb	4BR-P	3BR-Ca	2BR-Pa	4BR-Sa	3BR-Cb	2BR-Pb
7	3BR-Ca	3BR-Sb	4BR-P	3BR-Ca	2BR-Pa	4BR-Sa	3BR-Cb	2BR-Pb
6	3BR-Ca	3BR-Sb	4BR-P	3BR-Ca	2BR-Pa	4BR-Sa	3BR-Cb	2BR-Pb
5	3BR-Ca	3BR-Sb	4BR-P	3BR-Ca	2BR-Pa	4BR-Sa	3BR-Cb	2BR-Pb
4	3BR-Ca	3BR-Sb	4BR-P	3BR-Ca	2BR-Pa	4BR-Sa	3BR-Cb	2BR-Pb
3	3BR-Ca	3BR-Sb	4BR-P	3BR-Ca	2BR-Pa	4BR-Sa	3BR-Cb	2BR-Pb
2	3BR-Ca	3BR-Sb	4BR-P	3BR-Ca	2BR-Pa	4BR-Sa	3BR-Cb	2BR-Pb
1	3BR-Ca (PES)	3BR-Sb (PES)	4BR-P (PES)	3BR-Ca (PES)	1BR	4BR-Sa (PES)	3BR-Cb (PES)	2BR-Pb (PES)

Legend

1-Bedroom

2-Bedroom Compact

2-Bedroom Premium

3-Bedroom Compact

3-Bedroom Premium

4-Bedroom Compact

4-Bedroom Standard

4-Bedroom Premium





# Site Plan

## Arrival Zone

- 1 Grand Arrival
- 2 Side Gate 1
- 3 Side Gate 2
- 4 Side Gate 3

## Social Zone

- 5 Childcare Centre (Level 1)
- 6 Camper's Hut
- 7 Seating Lounge
- 8 Forest Foraging Garden
- 9 BBQ Pavilion
- 10 Meadow Garden
- 11 Meadow Trail
- 12 Floating Meadow

## Rejuvenate Zone

- 13 50m Lap Pool
- 14 Poolside Deck
- 15 Function Deck
- 16 Gym
- 17 Changing Room
- 18 Steam Room
- 19 Garden Alcove
- 20 Blossom Garden
- 21 Clubhouse Lawn
- 22 Outdoor Fitness

## Ancillary

- A Guardhouse
- B Meter Compartment
- C Access to Carpark
- D Substation (Basement)
- E Bin Centre (Basement)
- F Bicycle Bays (Basement)
- G Management Office (Basement)
- H Genset
- I Ventilation Shaft
- Solar Panel (Roof of Blocks 51 & 53)
- Water Tank (Roof of Blocks 51, 53, 55 & 57)

## Legend

- 1-Bedroom
- 2-Bedroom Compact
- 2-Bedroom Premium
- 3-Bedroom Compact
- 3-Bedroom Premium
- 4-Bedroom Compact
- 4-Bedroom Standard
- 4-Bedroom Premium

## Canberra Club

### Lifestyle Zone

- 23 Function Room 1
- 24 Function Room 2
- 25 Social Working Space
- 26 Entertainment Room 1
- 27 Entertainment Room 2
- 28 Family Pool
- 29 Poolside BBQ 1
- 30 Poolside BBQ 2
- 31 Cabanas
- 32 Mini Golf

### Kid's Zone

- 33 Kid's Club Hut
- 34 Kid's Water Slide
- 35 Kid's Pool
- 36 Forest Playground

## Sky Garden (Spanning Across Blocks 55 and 57)

### Block 55

- Reading Corner
- Couple Spa Pool
- Family Spa Pool
- Sunset Yoga Deck 1
- Sunset Yoga Deck 2
- Sky Lounge

### Block 57

- Lookout Point
- Gourmet Pavilion
- Culinary Pavilion
- BBQ Pavilion
- Sky Lawn



0 15 30 45 60m



A 1805-00015-2024-BP01 APPROVED ON 19 MAY 2025  
A 1805-00015-2024-BP02 APPROVED ON 16 JUNE 2025

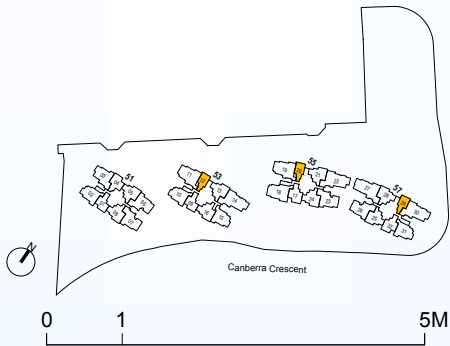
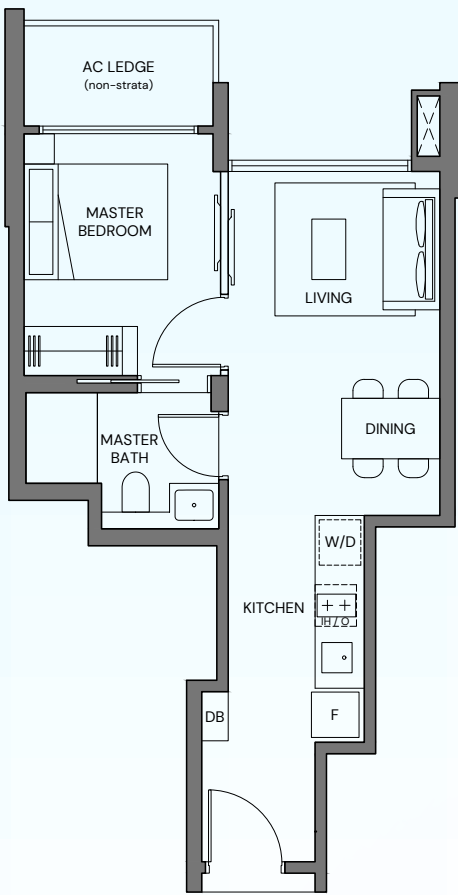


# 1-Bedroom

TYPE 1BR  
38 sqm / 409 sqft

BLK 53 #01-12  
BLK 55 #01-20  
BLK 57 #01-29\*

\*Mirrored unit



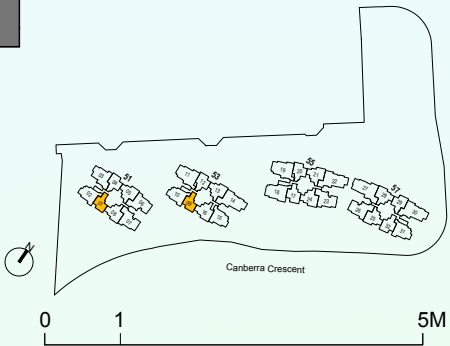
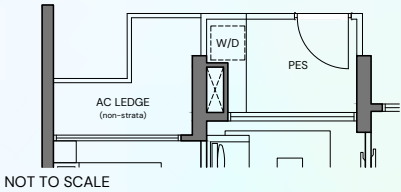
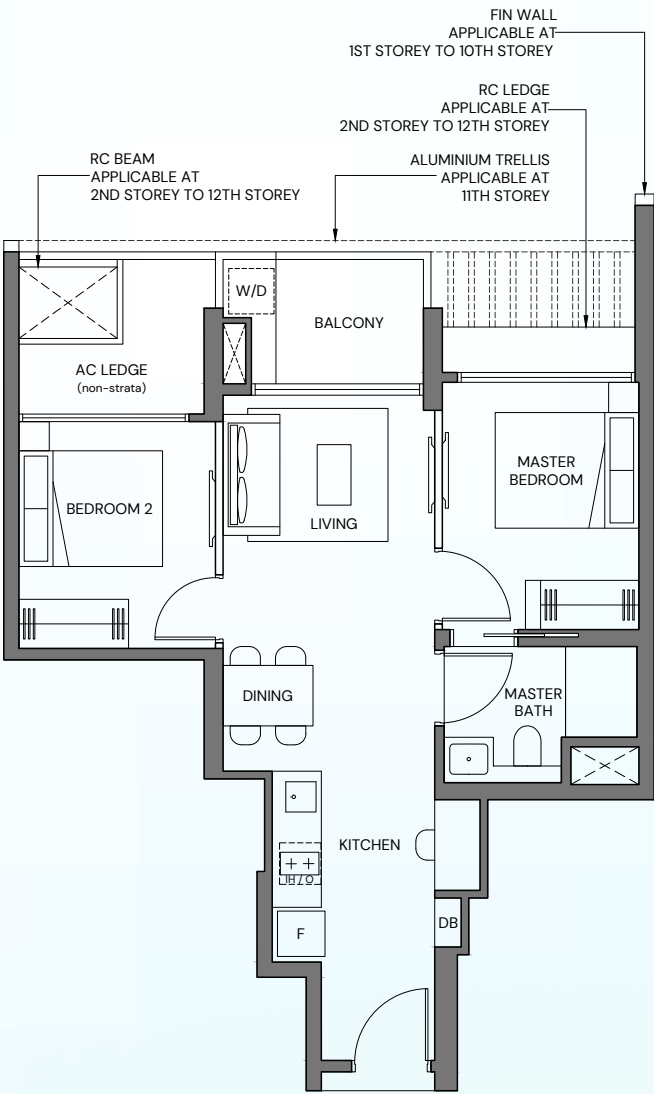
# 2-Bedroom Compact

TYPE 2BR-C (PES)  
53 sqm / 570 sqft

BLK 53 #01-09

TYPE 2BR-C  
53 sqm / 570 sqft

BLK 51 #02-01 - #12-01  
BLK 53 #02-09 - #12-09



Area includes private enclosed space (PES) or balcony, where applicable. all AC ledges and RC ledges (non-load bearing) are excluded from strata area. The plans are subjected to change as may be required by relevant authorities. All areas and measurements stated herein as approximate and subject to final survey.



# 2-Bedroom Premium

TYPE 2BR-Pa  
62 sqm / 667 sqft

BLK 51 #02-04 - #12-04  
BLK 53 #02-12 - #12-12  
BLK 55 #02-20 - #02-20  
BLK 57 #02-29\* - #12-29\*  
\*Mirrored unit



# 2-Bedroom Premium

TYPE 2BR-Pb (PES)  
62 sqm / 667 sqft

BLK 55 #01-17\*  
BLK 57 #01-32

TYPE 2BR-Pb  
62 sqm / 667 sqft

BLK 55 #02-17\* - #12-17\*  
BLK 57 #02-32 - #12-32  
\*Mirrored unit





# 3-Bedroom Compact

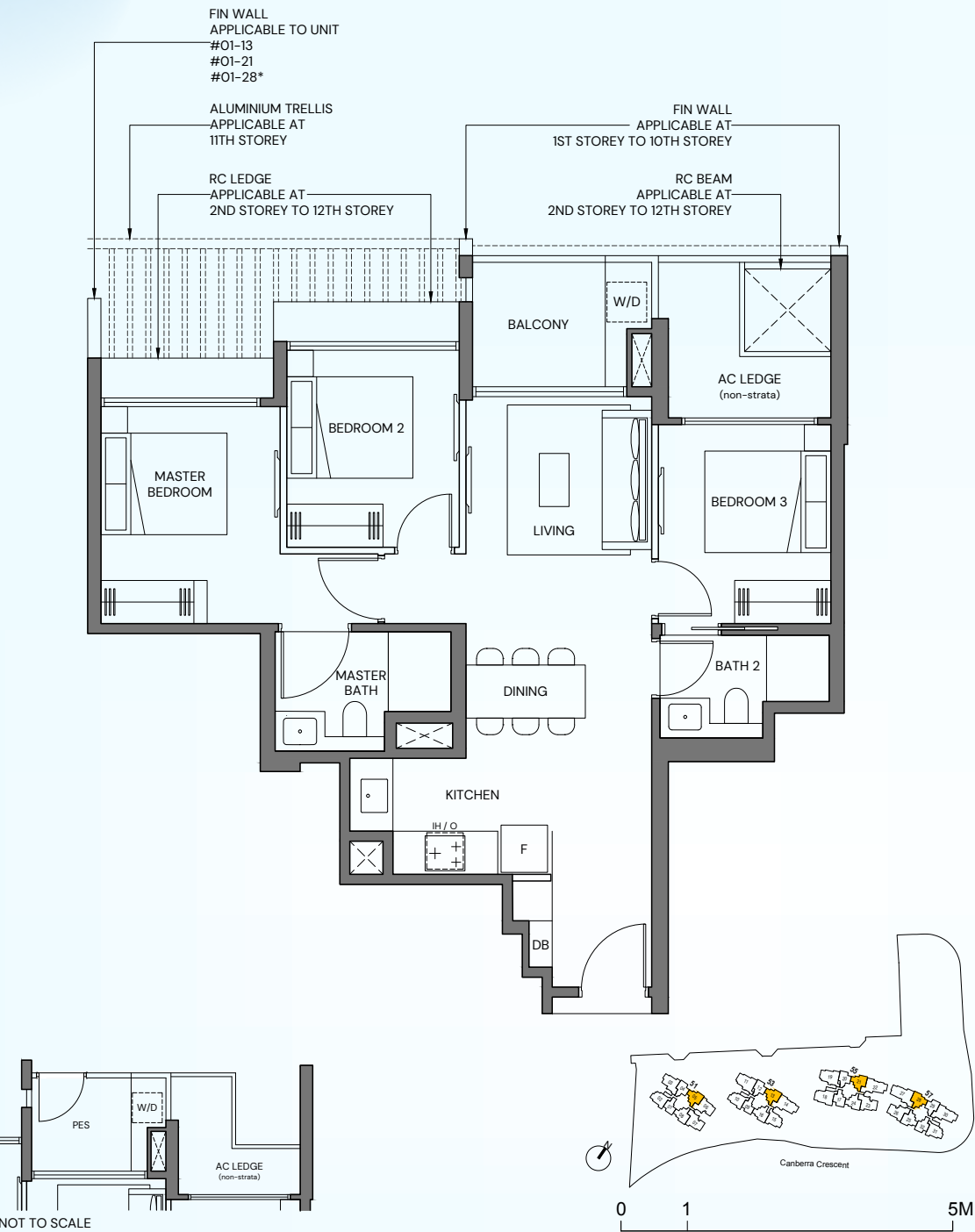
TYPE 3BR-Ca (PES)  
74 sqm / 797 sqft

BLK 53 #01-13  
BLK 55 #01-21  
BLK 57 #01-28\*

TYPE 3BR-Ca  
74 sqm / 797 sqft

BLK 51 #02-05 - #11-05  
BLK 53 #02-13 - #11-13  
BLK 55 #02-21 - #11-21  
BLK 57 #02-28\* - #11-28\*

\*Mirrored unit



# 3-Bedroom Compact

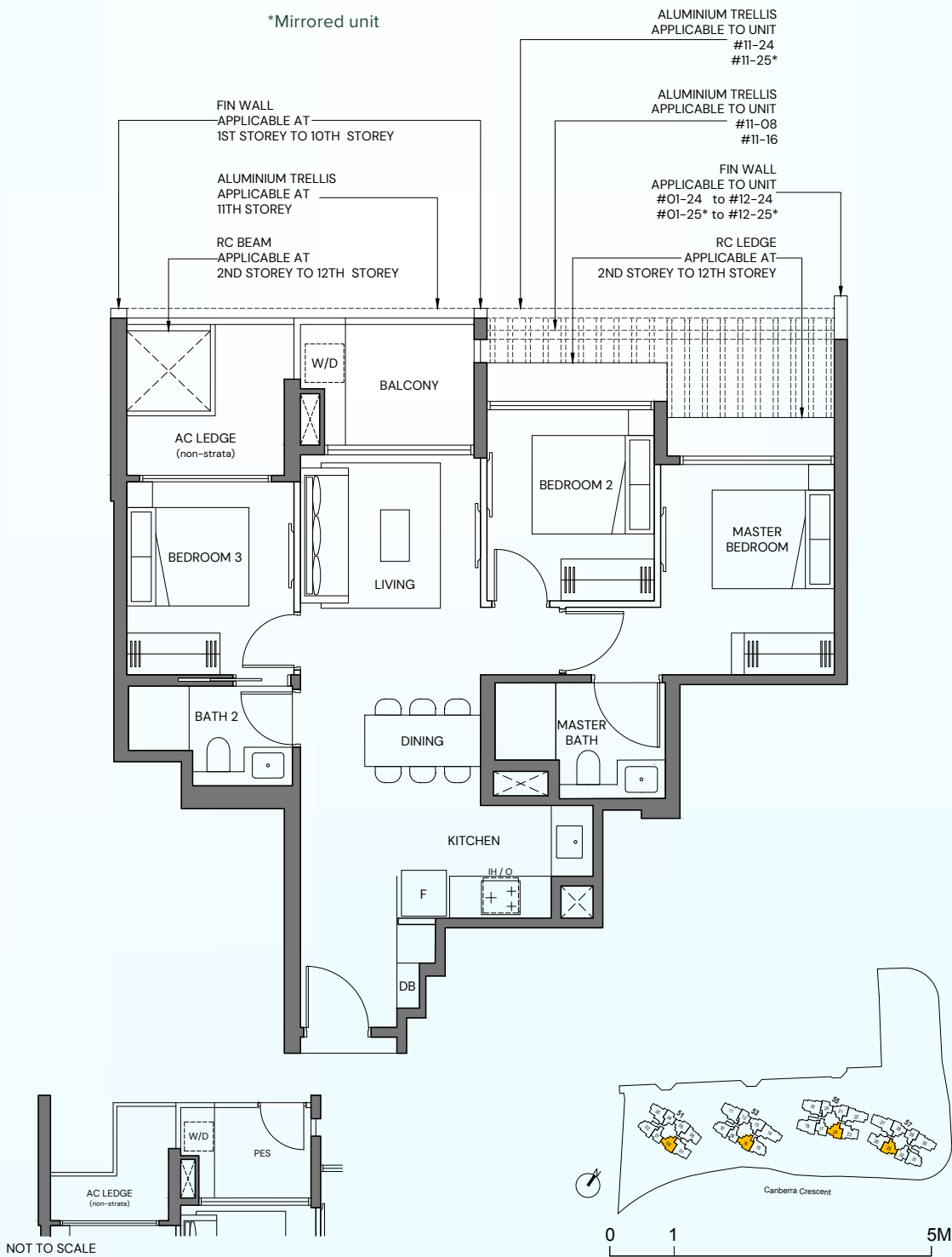
TYPE 3BR-Ca (PES)  
74 sqm / 797 sqft

BLK 53 #01-16  
BLK 55 #01-24  
BLK 57 #01-25\*

TYPE 3BR-Ca  
74 sqm / 797 sqft

BLK 51 #02-08 - #12-08  
BLK 53 #02-16 - #12-16  
BLK 55 #02-24 - #12-24  
BLK 57 #02-25\* - #12-25\*

\*Mirrored unit



Area includes private enclosed space (PES) or balcony, where applicable. all AC ledges and RC ledges (non-load bearing) are excluded from strata area. The plans are subjected to change as may be required by relevant authorities. All areas and measurements stated herein as approximate and subject to final survey.

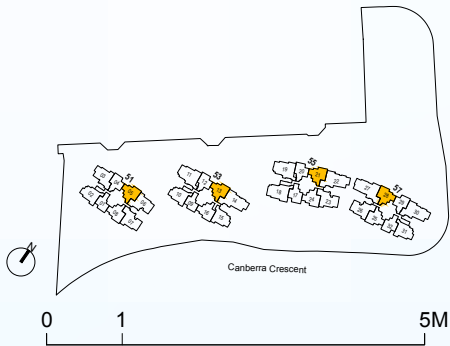
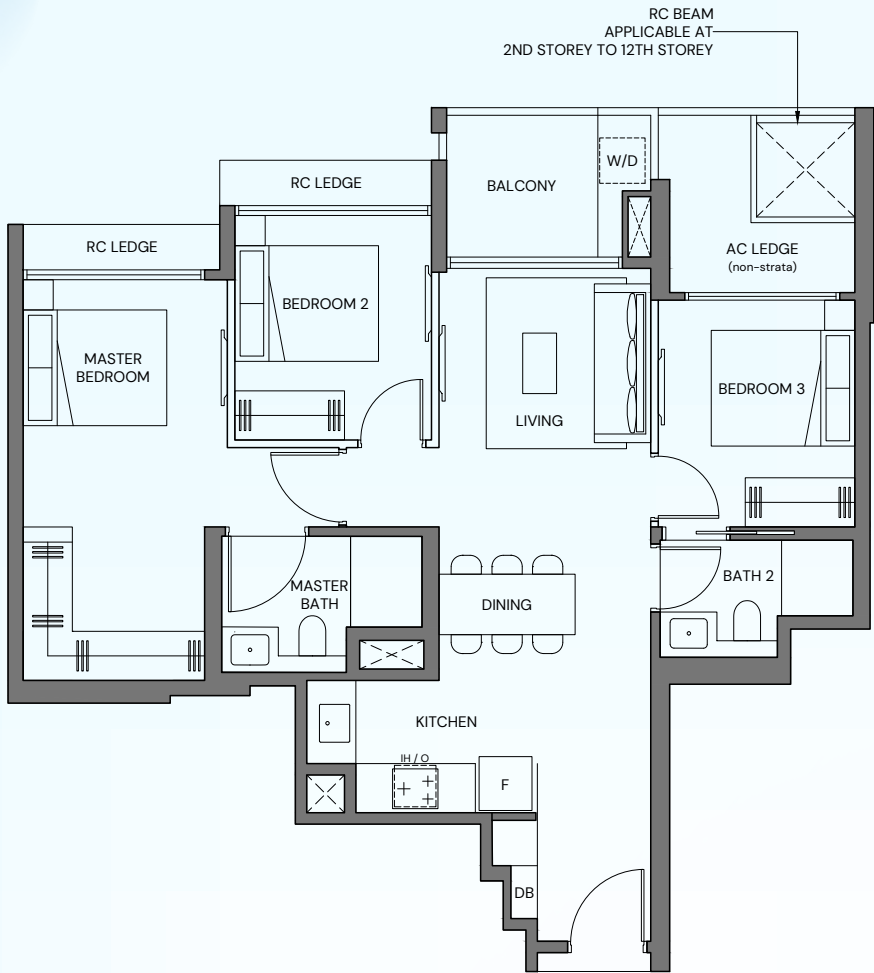


# 3-Bedroom Compact

TYPE 3BR-Ca (P)  
81 sqm / 872 sqft

BLK 51 #12-05  
BLK 53 #12-13  
BLK 55 #12-21  
BLK 57 #12-28\*

\*Mirrored unit



# 3-Bedroom Compact

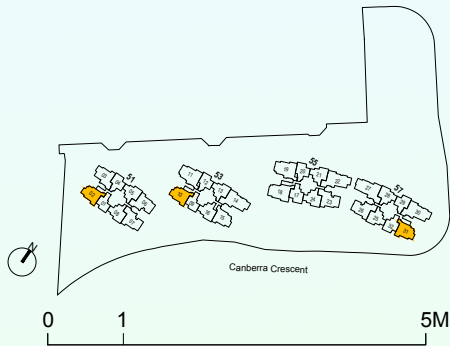
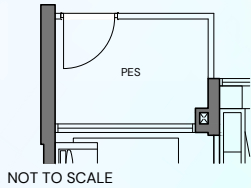
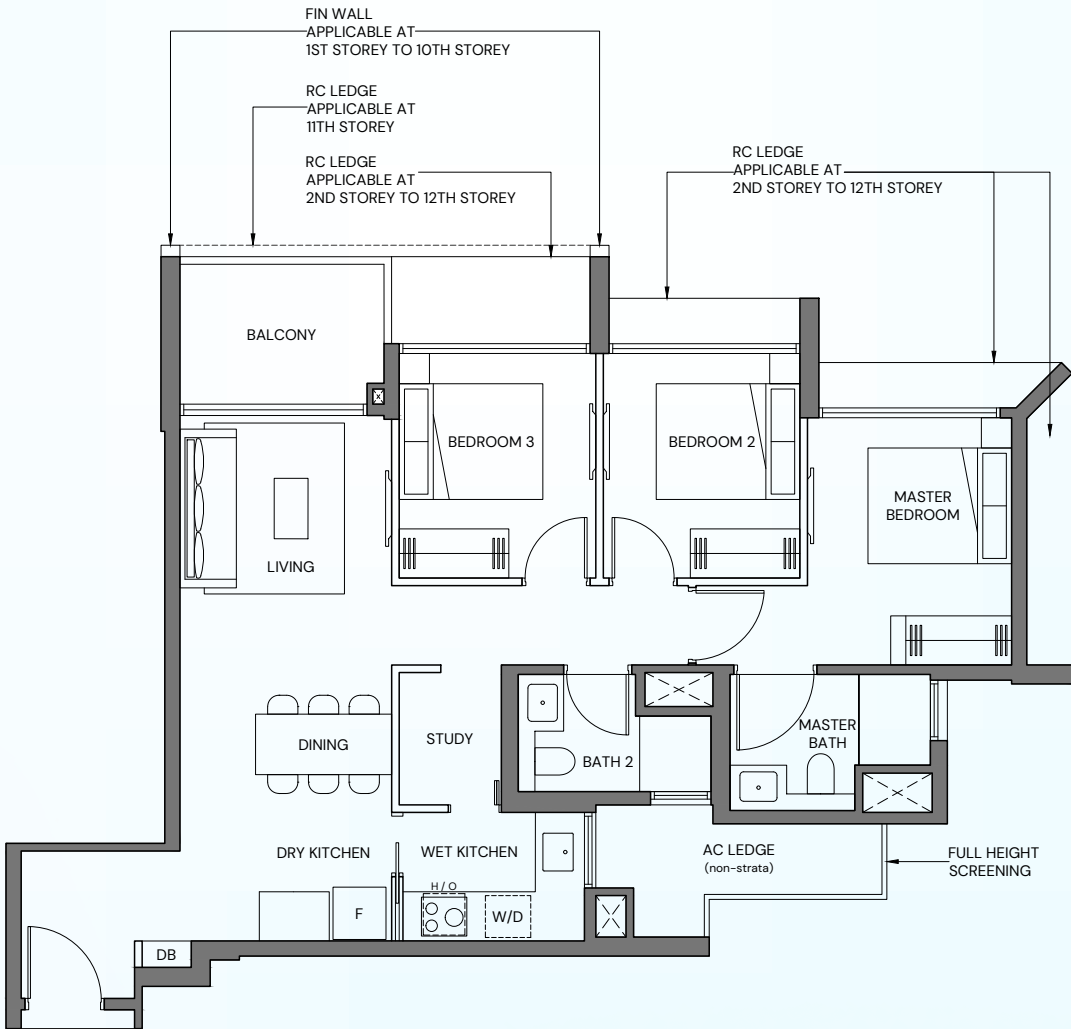
TYPE 3BR-Cb (PES)  
82 sqm / 883 sqft

BLK 53 #01-10  
BLK 57 #01-31\*

TYPE 3BR-Cb  
82 sqm / 883 sqft

BLK 51 #02-02 - #12-02  
BLK 53 #02-10 - #12-10  
BLK 57 #02-31\* - #12-31\*

\*Mirrored unit

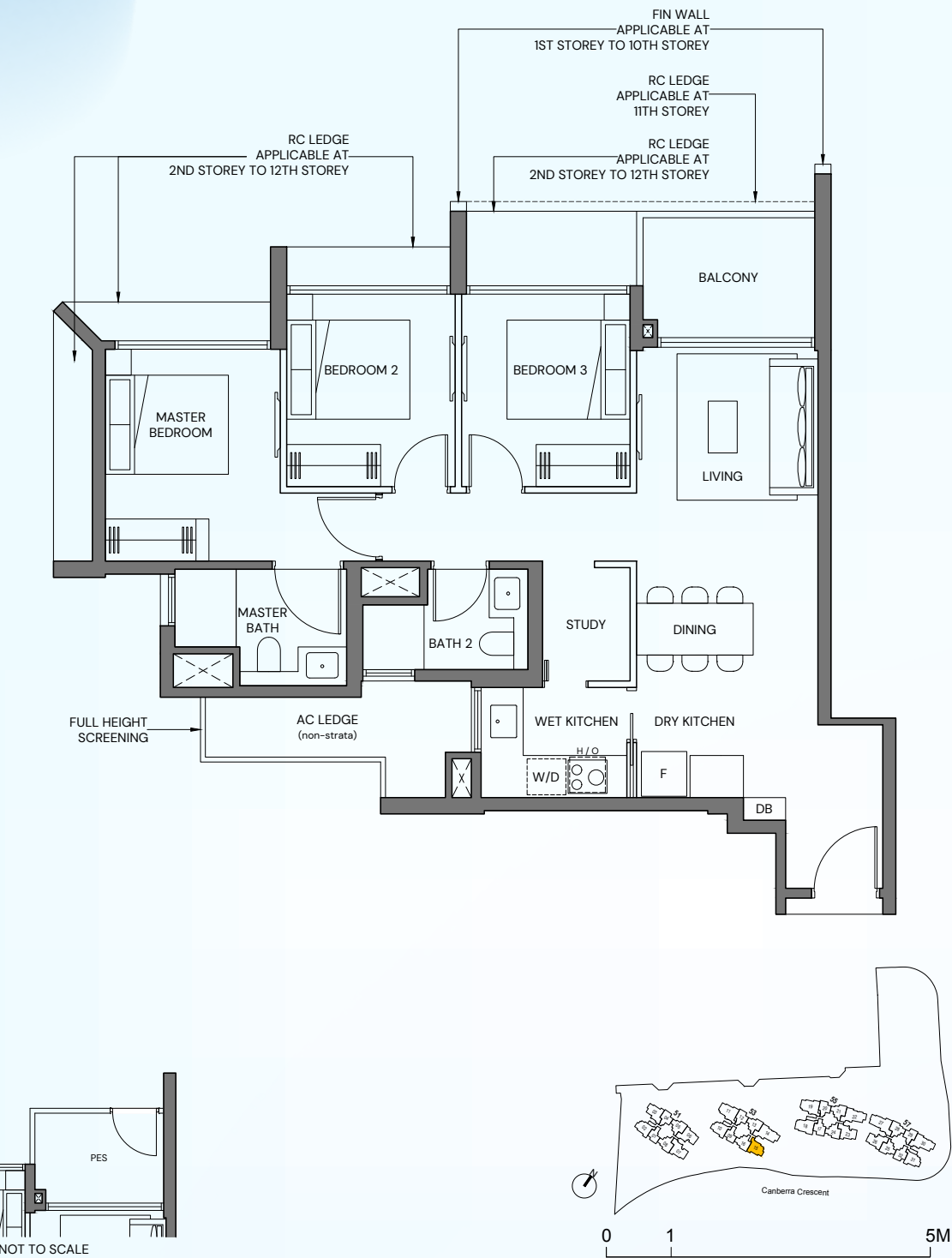




# 3-Bedroom Compact

TYPE 3BR-Cc (PES)      BLK 53 #01-15  
81 sqm / 872 sqft

TYPE 3BR-Cc      BLK 53 #02-15 - #12-15  
81 sqm / 872 sqft



# 3-Bedroom Premium

TYPE 3BR-Sa      BLK 51 #02-03 - #12-03  
92 sqm / 990 sqft

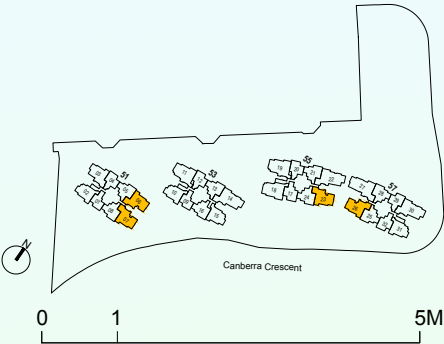
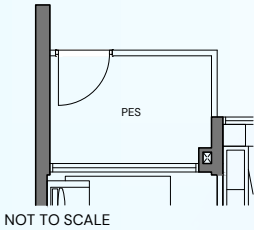
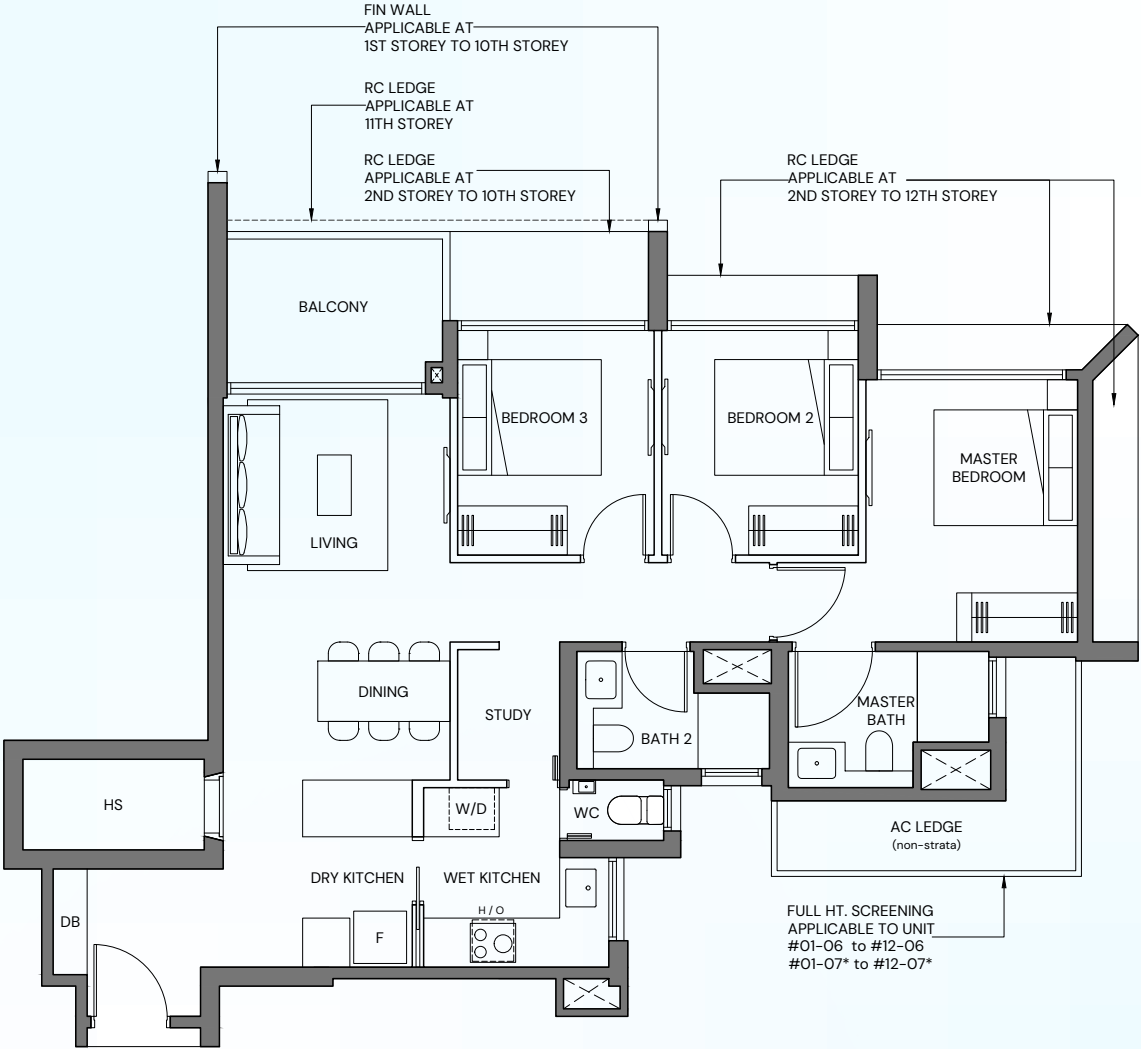


Area includes private enclosed space (PES) or balcony, where applicable. all AC ledges and RC ledges (non-load bearing) are excluded from strata area. The plans are subjected to change as may be required by relevant authorities. All areas and measurements stated herein as approximate and subject to final survey.



# 3-Bedroom Premium

TYPE 3BR-Sb (PES) 92 sqm / 990 sqft	BLK 55 #01-23*
	BLK 57 #01-26
TYPE 3BR-Sb 92 sqm / 990 sqft	BLK 51 #02-06 - #12-06
	BLK 51 #02-07* - #12-07*
	BLK 55 #02-23* - #12-23*
	BLK 57 #02-26 - #12-26
*Mirrored unit	

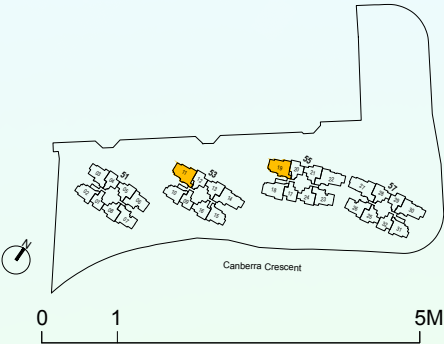
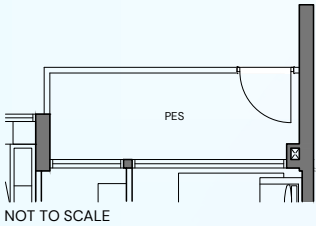
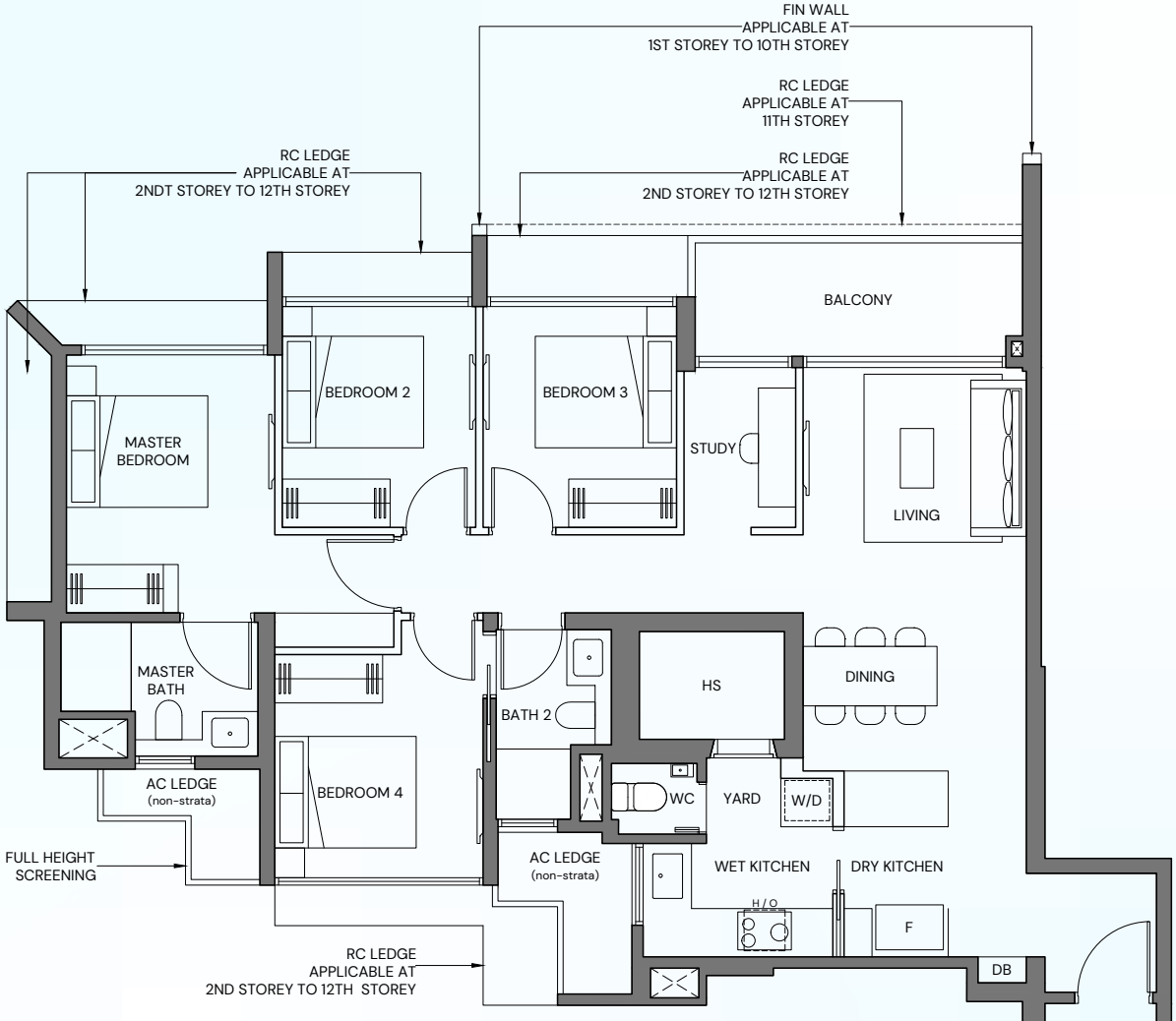


Area includes private enclosed space (PES) or balcony, where applicable. all AC ledges and RC ledges (non-load bearing) are excluded from strata area. The plans are subjected to change as may be required by relevant authorities. All areas and measurements stated herein as approximate and subject to final survey.



# 4-Bedroom Compact

TYPE 4BR-Ca (PES)	BLK 53 #01-11
108 sqm / 1163 sqft	BLK 55 #01-19
TYPE 4BR-Ca	BLK 53 #02-11 - #12-11
108 sqm / 1163 sqft	BLK 55 #02-19 - #12-19



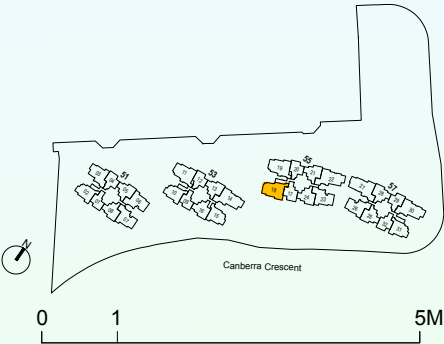
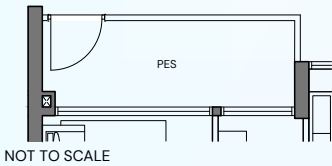
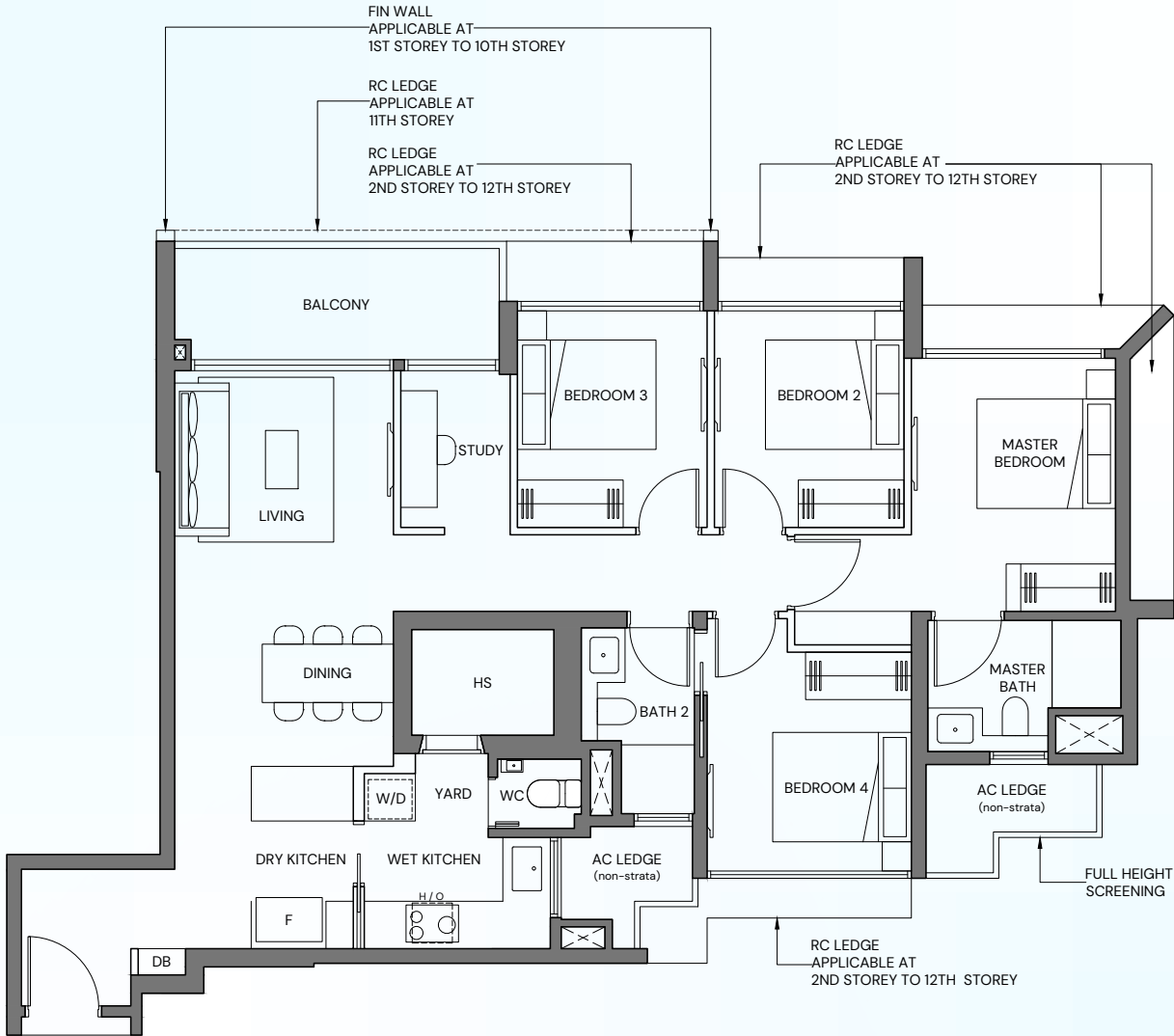
Area includes private enclosed space (PES) or balcony, where applicable. all AC ledges and RC ledges (non-load bearing) are excluded from strata area. The plans are subjected to change as may be required by relevant authorities. All areas and measurements stated herein as approximate and subject to final survey.



# 4-Bedroom Compact

TYPE 4BR-Cb (PES)      BLK 55 #01-18  
109 sqm / 1173 sqft

TYPE 4BR-Cb      BLK 55 #02-18 - #12-18  
109 sqm / 1173 sqft



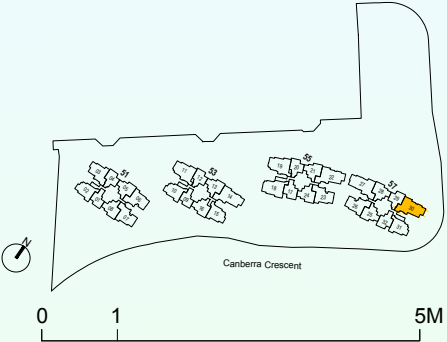
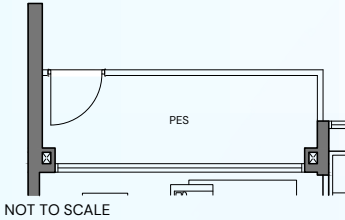
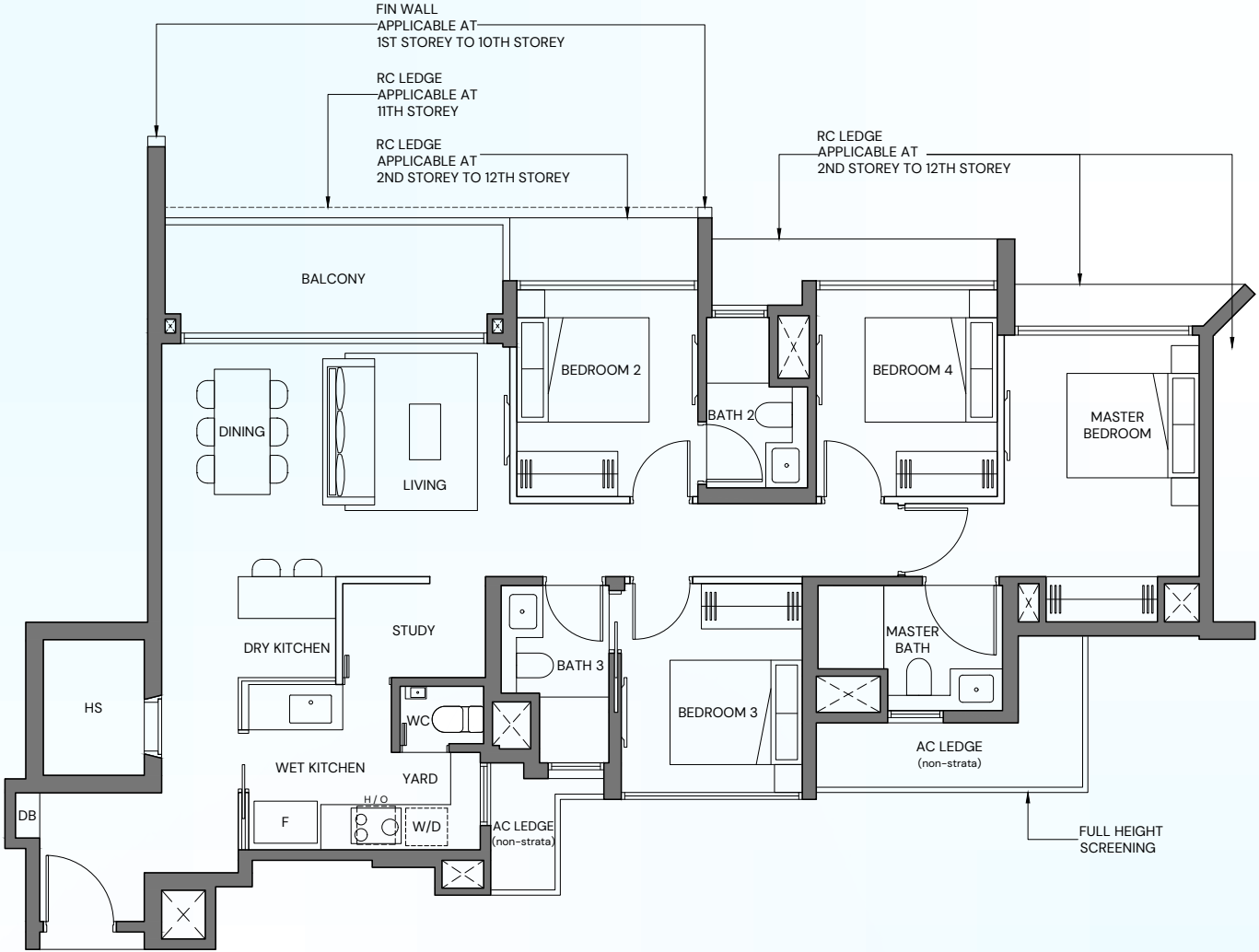
Area includes private enclosed space (PES) or balcony, where applicable. all AC ledges and RC ledges (non-load bearing) are excluded from strata area. The plans are subjected to change as may be required by relevant authorities. All areas and measurements stated herein as approximate and subject to final survey.



# 4-Bedroom Standard

TYPE 4BR-Sa (PES)      BLK 57 #01-30  
113 sqm / 1216 sqft

TYPE 4BR-Sa      BLK 57 #02-30 - #12-30  
113 sqm / 1216 sqft

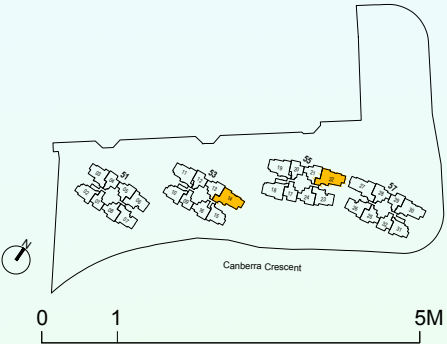
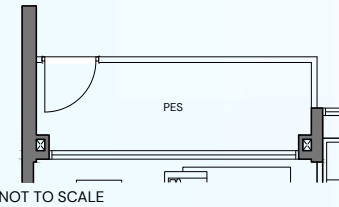
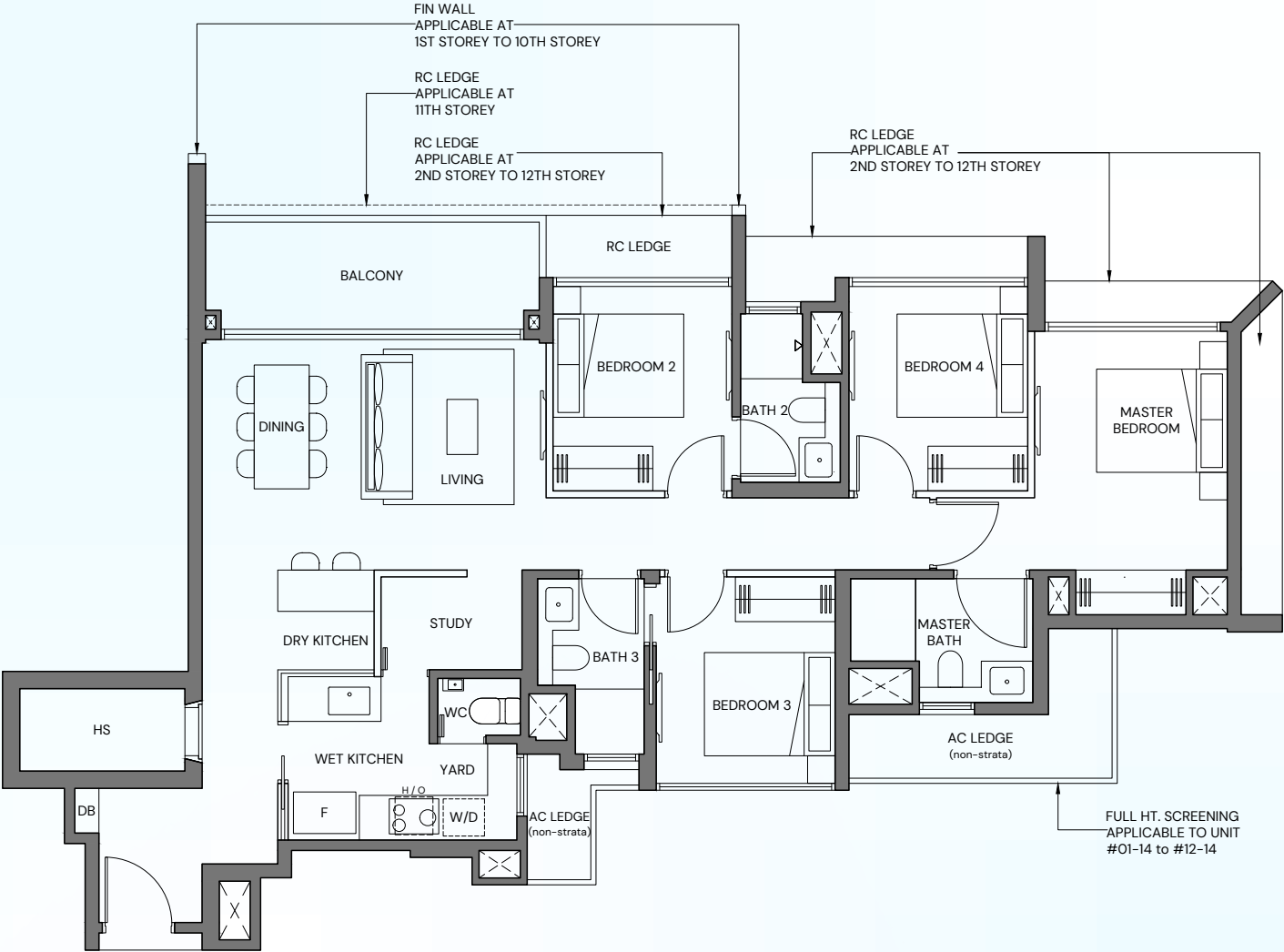


Area includes private enclosed space (PES) or balcony, where applicable. all AC ledges and RC ledges (non-load bearing) are excluded from strata area. The plans are subjected to change as may be required by relevant authorities. All areas and measurements stated herein as approximate and subject to final survey.



# 4-Bedroom Standard

TYPE 4BR-Sb (PES)	BLK 53 #01-14
113 sqm / 1216 sqft	BLK 55 #01-22
TYPE 4BR-Sb	BLK 53 #02-14 - #12-14
113 sqm / 1216 sqft	BLK 55 #02-22 - #12-22



Area includes private enclosed space (PES) or balcony, where applicable. all AC ledges and RC ledges (non-load bearing) are excluded from strata area. The plans are subjected to change as may be required by relevant authorities. All areas and measurements stated herein as approximate and subject to final survey.



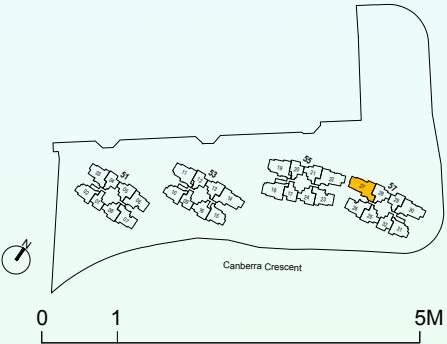
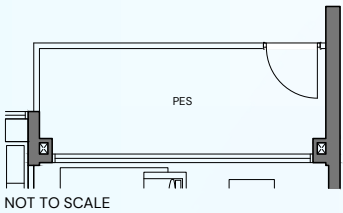
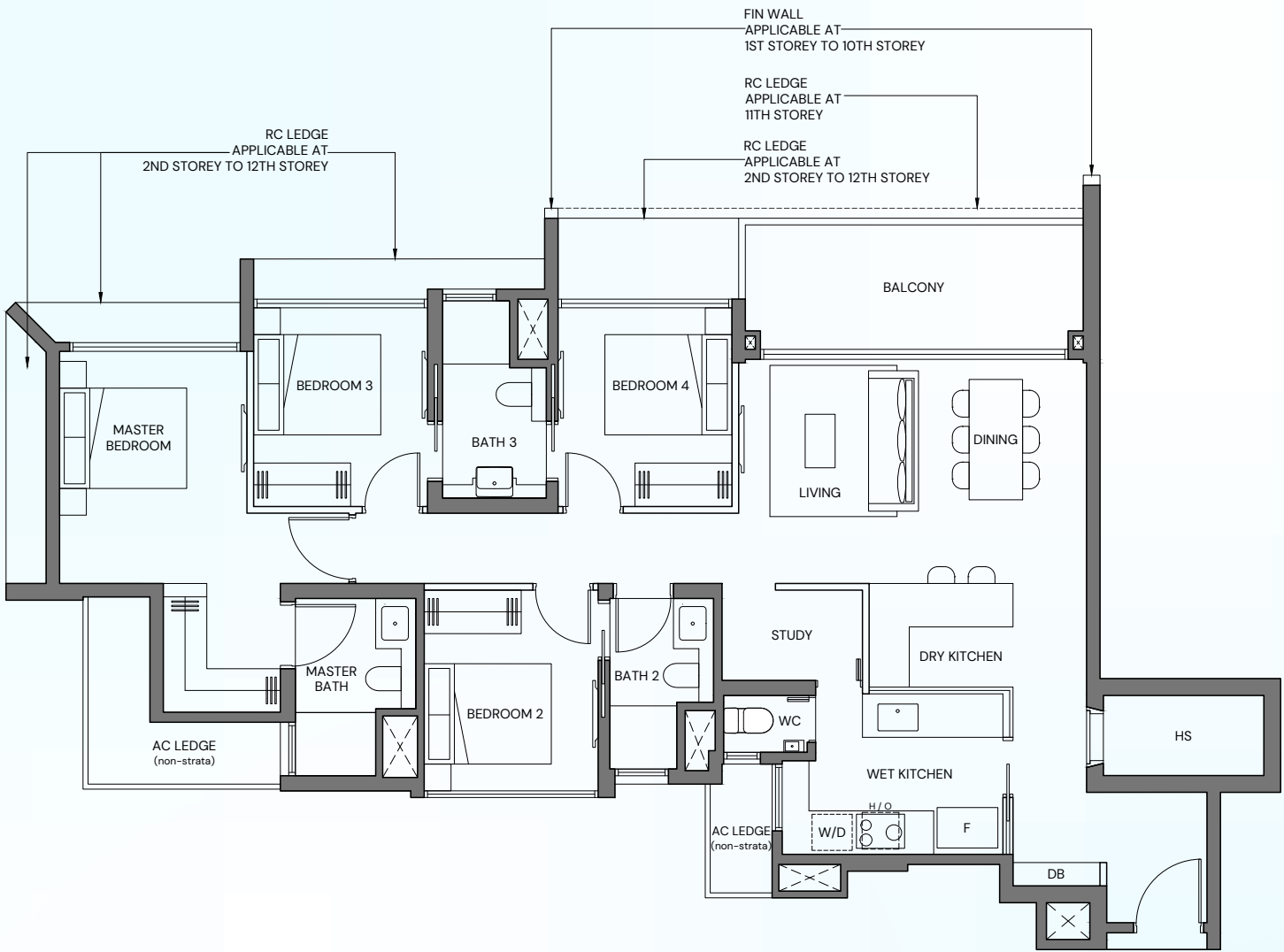
# 4-Bedroom Premium

TYPE 4BR-P (PES)  
123 sqm / 1324 sqft

TYPE 4BR-P  
123 sqm / 1324 sqft

BLK 57 #01-27

BLK 57 #02-27 - #12-27



Area includes private enclosed space (PES) or balcony, where applicable. all AC ledges and RC ledges (non-load bearing) are excluded from strata area. The plans are subjected to change as may be required by relevant authorities. All areas and measurements stated herein as approximate and subject to final survey.



# A distinctive vision brought to life by award-winning designers



15 Holland Hill



AMO Residence



The Minton



The Woods



One North Residences



Clavon

## Architect

### P&T GROUP

With 150 years of unparalleled design experience in the world's emerging and developed countries and more than 20 offices and associated offices in Singapore, Hong Kong, China, Thailand, UAE, Vietnam and other countries, P&T Group is award-winning and one of the largest Architectural and Engineering practices in the world.

Notable projects in Singapore include 15 Holland Hill, Normanton Park, Parktown Residence and Mapletree Business City.

As an organisation, P&T is committed to pursuing excellence in architecture and aims to improve the quality of life by practising the highest standards in design methodologies. A team approach is adopted towards projects, providing continuity in design and enhancing the coordination and collaboration of all parties involved. P&T also believes in the responsibility of architecture beyond mere building through enhancing the environment and sense of place. Special emphasis is placed on the visual, spatial and functional elements of design, to create buildings that are both aesthetically pleasing and sympathetic to their surroundings.

## Landscape Designer

### SALAD DRESSING

An award-winning landscape architecture studio, Salad Dressing specialises in Rewilding Strategies, Experiential Curation and Digital Umwelt, crafting bold ideas into transformative and immersive experiences.

With a portfolio of over 300 projects in 16 countries, notable works include the Singapore Pavilion at Expo 2020 in Dubai, Jurong Lake Gardens, luxury resorts in the Maldives and Aman Tokyo.

## Interior Designer

### INDEX DESIGN

Based in Singapore, this acclaimed interior design consultancy is known for its innovative and client-focused approach to residential and commercial design. Established in 1994 with a vision to blend creativity with functionality, the firm has built a strong reputation for delivering sophisticated, timeless and user-centric spaces across the residential, commercial, hospitality and healthcare sectors.

In 2021, the firm was awarded Best Design Firm by the Society of Interior Designers Singapore, a prestigious recognition for its excellence in design quality and creativity. This accolade reflects the firm's commitment to design integrity and its leadership in shaping Singapore's interior design landscape. The award-winning firm partners with premier property developers to create luxurious, innovative living spaces, continually pushing boundaries and redefining industry standards.



# Two trusted names, one common goal



KHENG LEONG CO.

For generations, Kheng Leong has been crafting exceptional living spaces, from luxurious residences to thoughtfully-designed homes for all.

Iconic projects include The Nassim, 32 Gilstead, MeyerHouse and Nassim Park Residences, along with award-winning developments such as AMO Residence, The Watergardens at Canberra, The Terrace and The Topiary Executive Condominium.

Canberra Crescent Residences is set to redefine northern living with innovative design and sustainable living for all.



LOW KENG HUAT (SINGAPORE) LIMITED

With a rich history spanning five decades, Low Keng Huat (Singapore) Limited has earned its reputation as a trusted name in real estate.

From property development and investments to hospitality, its diverse portfolio boasts premier projects like Dalvey Haus, Klimt Cairnhill, The Minton and Paya Lebar Square.

Driven by a commitment to quality and innovation, the company continues to shape vibrant communities and elevate lifestyles, ensuring every project makes a lasting impact.



The Watergardens at Canberra



MeyerHouse



The Minton



Klimt Cairnhill



**DISCLAIMER** While every reasonable care has been taken in preparing this brochure and in constructing the models and showflats, the developer and the marketing agents cannot be held responsible for any inaccuracies or omissions. Visual representations, models, showflat displays and illustrations, photographs, art renderings and other graphic representations and references are intended to portray only artistic impressions of the development and cannot be regarded as a representation of fact. The property is subject to inspection by the relevant authorities to comply with the current codes of practice. All information, specifications, renderings, visual representations and plans are current at the time of publication and are subject to change as may be required by us and/or the competent authorities and shall not be regarded as statements or representations of facts. All plans are subject to amendments as directed and/or approved by the building authorities. All areas are approximate measurements only and subject to the final survey. The Sales and Purchase Agreement shall form the entire agreement between us, the Developer and the Purchaser and shall supersede all statements, representations or promises made prior to the signing of the Sale and Purchase Agreement and shall in no way be modified by any statements, representations or promises made by us or the Marketing Agent.

**PROJECT INFORMATION**

Developer: Peak Crescent Pte Ltd (Co. Registration No. 202434281E) • Tenure: 99 Years Commencing From 4th November 2024 • Expected Date of Vacant Possession: 30th April 2030 • Expected Date of Legal Completion: 30th April 2033 • Encumbrance: Caveat IJ/723119J In Favour of United Overseas Bank • Lot & Mukim Number: Lot 04181V MK19 At Canberra Crescent • Developer’s License No.: C1527