

SUITE

PREMIER COLLECTION

Type S1

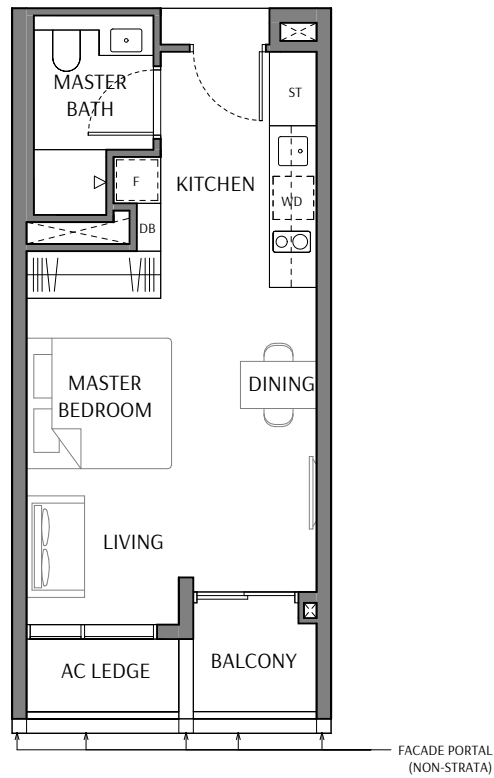
Area: 40 sqm | 431 sqft

Unit(s): #03-35 to #09-35

#03-36 to #09-36

#03-37 to #09-37

#03-38* to #09-38*



Type S1 (P)

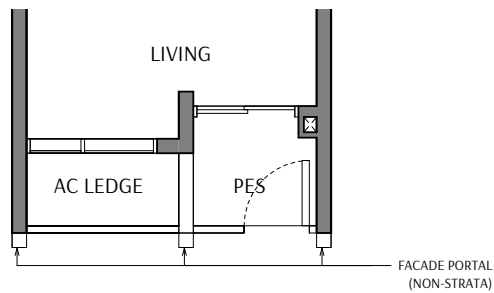
Area: 40 sqm | 431 sqft

Unit(s): #02-35

#02-36

#02-37

#02-38*



LEGEND

WD - Washer Cum Dryer

F - Refrigerator

DB - Distribution Board

ST - Storage

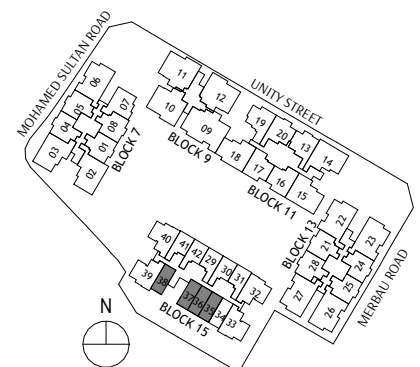
* - Mirrored Unit

>< Void Space (excluded from strata area)

Wall not allowed to be hacked or altered



Area includes air conditioner (AC) ledge, balcony, PES and strata void where applicable. RC ledge do not form part of the unit strata area. The above plans are subject to change as may be approved by the relevant authorities. All floor plans are approximate measurements only and are subject to government re-survey. These are for the purpose of visual presentation only. The balcony and PES shall not be enclosed unless with the approved balcony screen. The installation and cost of the screen shall be borne by the purchaser.



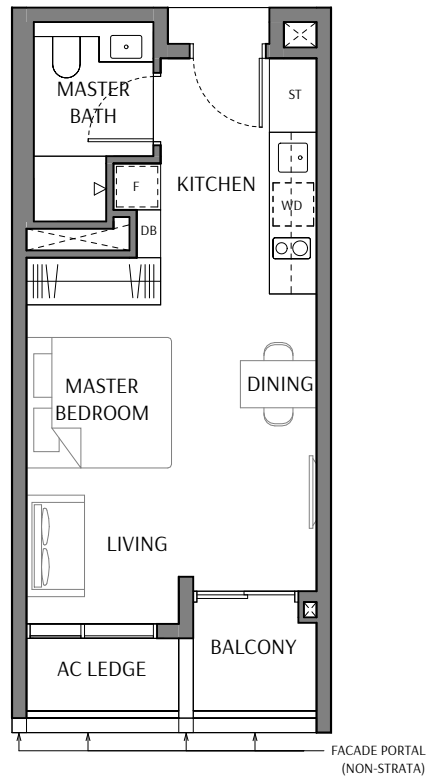
SUITE

PREMIER COLLECTION

Type S1a

Area: 40 sqm | 431 sqft

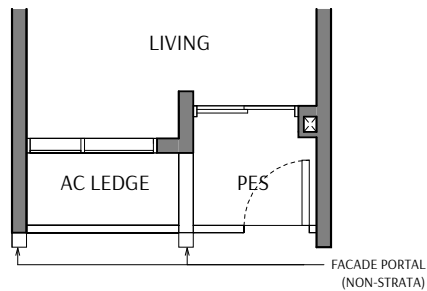
Unit(s): #03-34 to #09-34



Type S1a (P)

Area: 40 sqm | 431 sqft

Unit(s): #02-34



LEGEND

WD - Washer Cum Dryer

F - Refrigerator

DB - Distribution Board

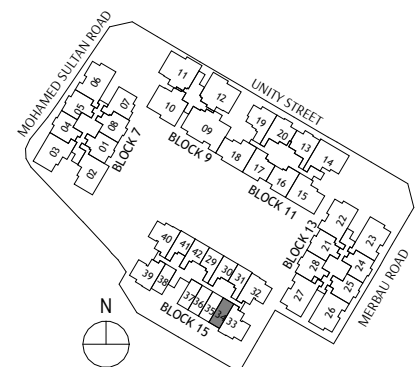
ST - Storage

Void Space (excluded from strata area)

Wall not allowed to be hacked or altered



Area includes air conditioner (AC) ledge, balcony, PES and strata void where applicable. RC ledge do not form part of the unit strata area. The above plans are subject to change as may be approved by the relevant authorities. All floor plans are approximate measurements only and are subject to government re-survey. These are for the purpose of visual presentation only. The balcony and PES shall not be enclosed unless with the approved balcony screen. The installation and cost of the screen shall be borne by the purchaser.



1 BEDROOM

PREMIER COLLECTION

Type A1

Area: 46 sqm | 495 sqft

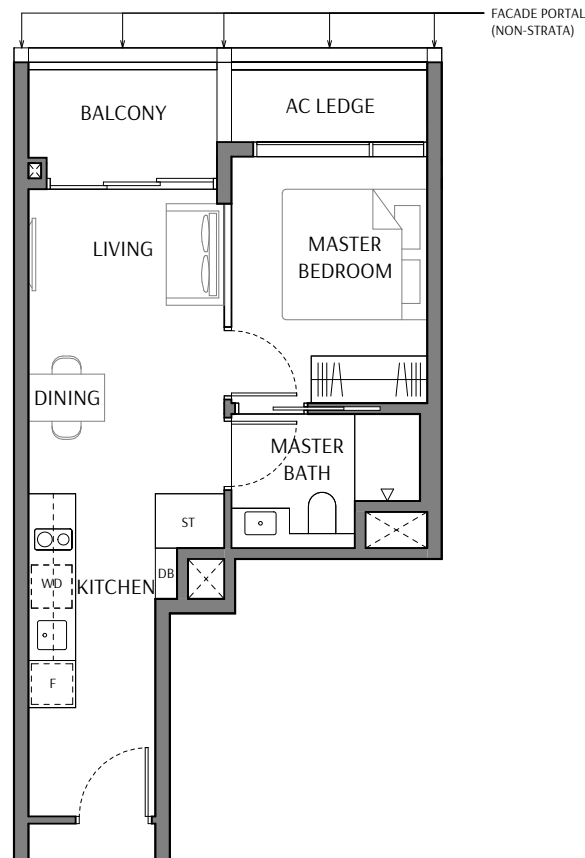
Unit(s): #03-29* to #09-29*

#03-30 to #09-30

#03-31* to #09-31*

#03-41 to #09-41

#03-42 to #09-42



Type A1 (P)

Area: 46 sqm | 495 sqft

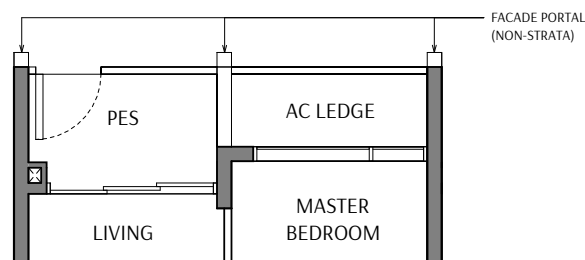
Unit(s): #02-29*

#02-30

#02-31*

#02-41

#02-42



LEGEND

WD - Washer Cum Dryer

F - Refrigerator

DB - Distribution Board

ST - Storage

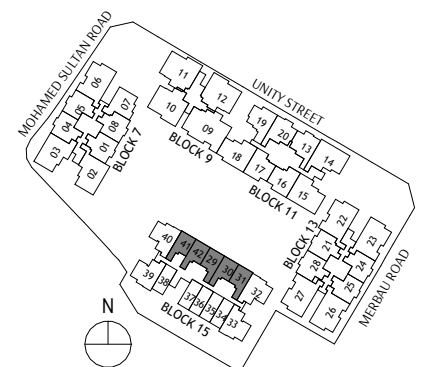
* - Mirrored Unit

Void Space (excluded from strata area)

Wall not allowed to be hacked or altered



Area includes air conditioner (AC) ledge, balcony, PES and strata void where applicable. RC ledge do not form part of the unit strata area. The above plans are subject to change as may be approved by the relevant authorities. All floor plans are approximate measurements only and are subject to government re-survey. These are for the purpose of visual presentation only. The balcony and PES shall not be enclosed unless with the approved balcony screen. The installation and cost of the screen shall be borne by the purchaser.



2 BEDROOM

PREMIER COLLECTION

Type B1

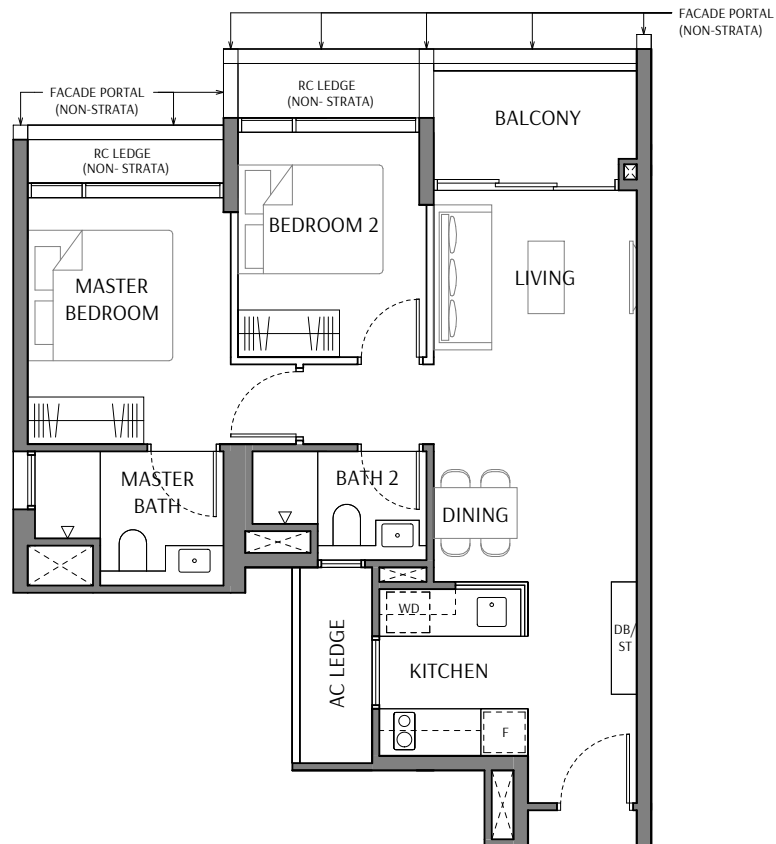
Area: 67 sqm | 721 sqft

Unit(s): #03-32* to #09-32*

#03-33 to #09-33

#03-39* to #09-39*

#03-40 to #09-40



Type B1 (P)

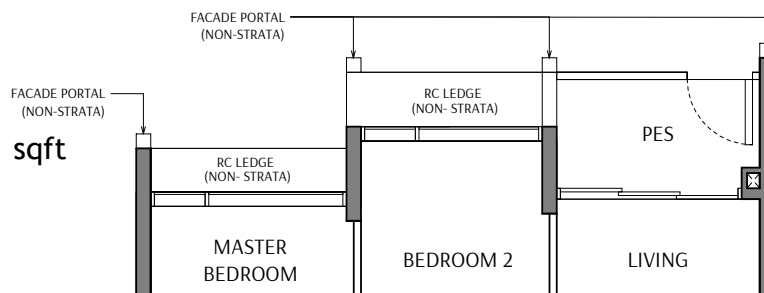
Area: 67 sqm | 721 sqft

Unit(s): #02-32*

#02-33

#02-39*

#02-40



LEGEND

WD - Washer Cum Dryer

F - Refrigerator

DB - Distribution Board

ST - Storage

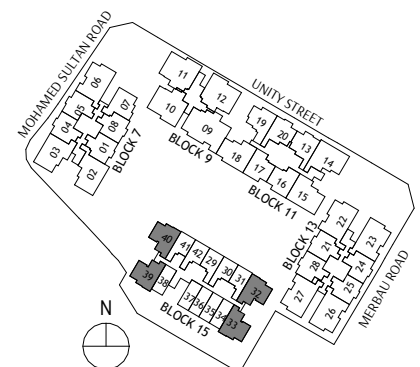
* - Mirrored Unit

Void Space (excluded from strata area)

Wall not allowed to be hacked or altered



Area includes air conditioner (AC) ledge, balcony, PES and strata void where applicable. RC ledge do not form part of the unit strata area. The above plans are subject to change as may be approved by the relevant authorities. All floor plans are approximate measurements only and are subject to government re-survey. These are for the purpose of visual presentation only. The balcony and PES shall not be enclosed unless with the approved balcony screen. The installation and cost of the screen shall be borne by the purchaser.



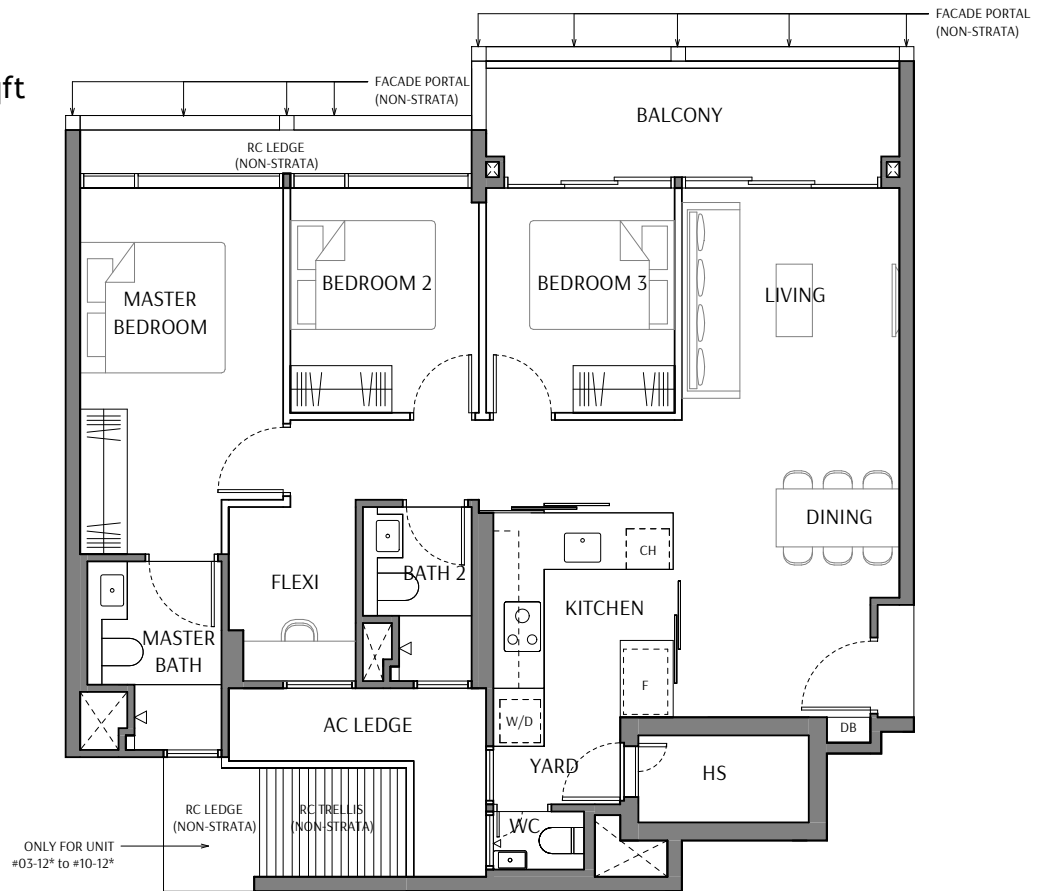
3 BEDROOM PREMIUM

LEGACY COLLECTION

Type C1-P

Area: 107 sqm | 1152 sqft

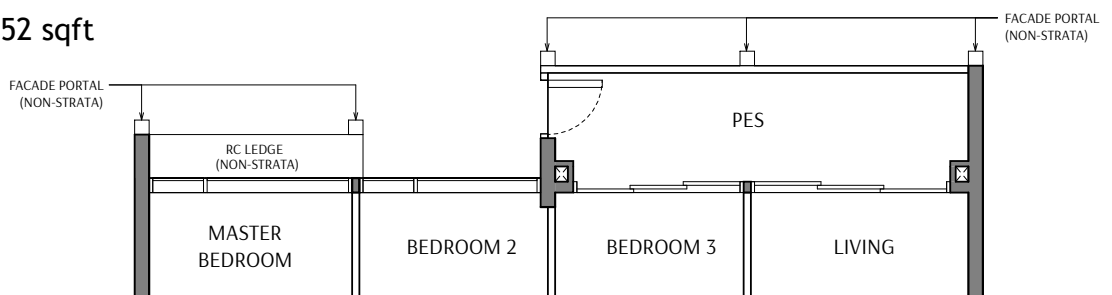
Unit(s): #03-11 to #10-11
#03-12* to #10-12*



Type C1-P (P)

Area: 107 sqm | 1152 sqft

Unit(s): #02-11
#02-12*



LEGEND

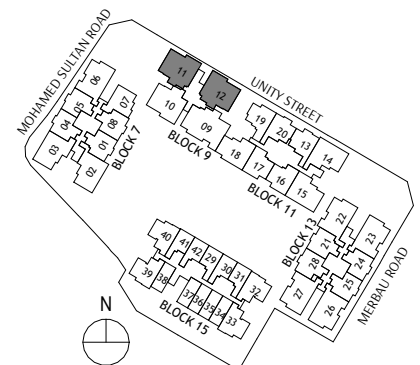
HS - Household Shelter
W/D - Washer and Dryer
F - Refrigerator

Void Space (excluded from strata area)
Wall not allowed to be hacked or altered

CH - Wine Chiller
DB - Distribution Board
* - Mirrored Unit



Area includes air conditioner (AC) ledge, balcony, PES and strata void where applicable. RC ledge do not form part of the unit strata area. The above plans are subject to change as may be approved by the relevant authorities. All floor plans are approximate measurements only and are subject to government re-survey. These are for the purpose of visual presentation only. The balcony and PES shall not be enclosed unless with the approved balcony screen. The installation and cost of the screen shall be borne by the purchaser.

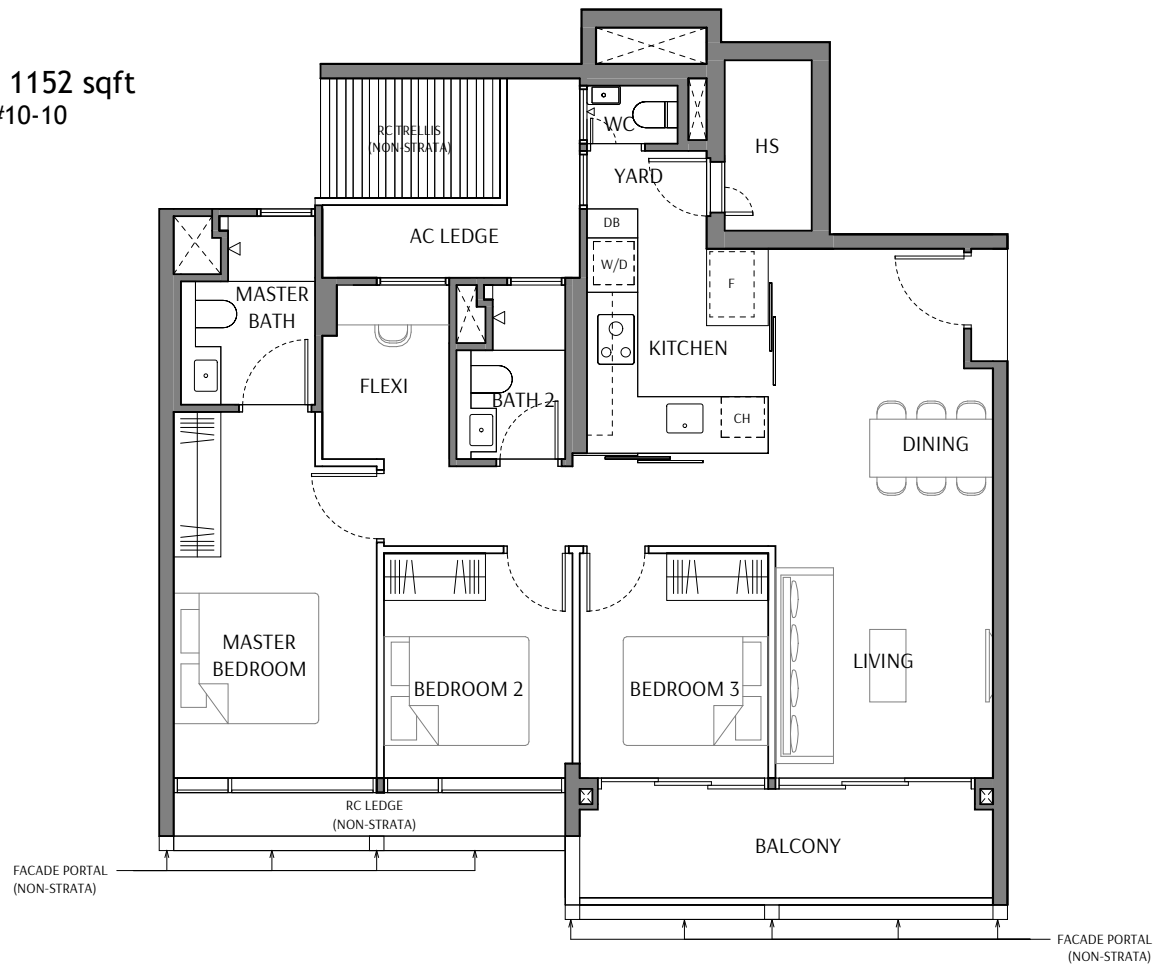


3 BEDROOM PREMIUM

LEGACY COLLECTION

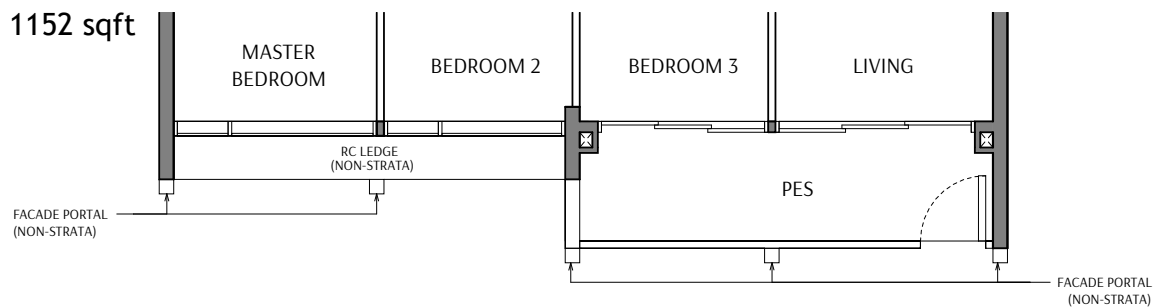
Type C2-P

Area: 107 sqm | 1152 sqft
Unit(s): #03-10 to #10-10



Type C2-P (P)

Area: 107 sqm | 1152 sqft
Unit(s): #02-10



LEGEND

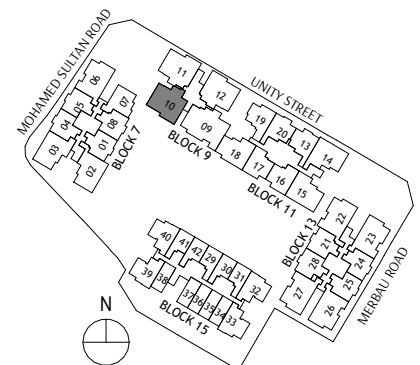
HS - Household Shelter
W/D - Washer and Dryer
F - Refrigerator

CH - Wine Chiller
DB - Distribution Board

□ > < □ Void Space (excluded from strata area)
■ Wall not allowed to be hacked or altered

0 1 3 5m

Area includes air conditioner (AC) ledge, balcony, PES and strata void where applicable. RC ledge do not form part of the unit strata area. The above plans are subject to change as may be approved by the relevant authorities. All floor plans are approximate measurements only and are subject to government re-survey. These are for the purpose of visual presentation only. The balcony and PES shall not be enclosed unless with the approved balcony screen. The installation and cost of the screen shall be borne by the purchaser.

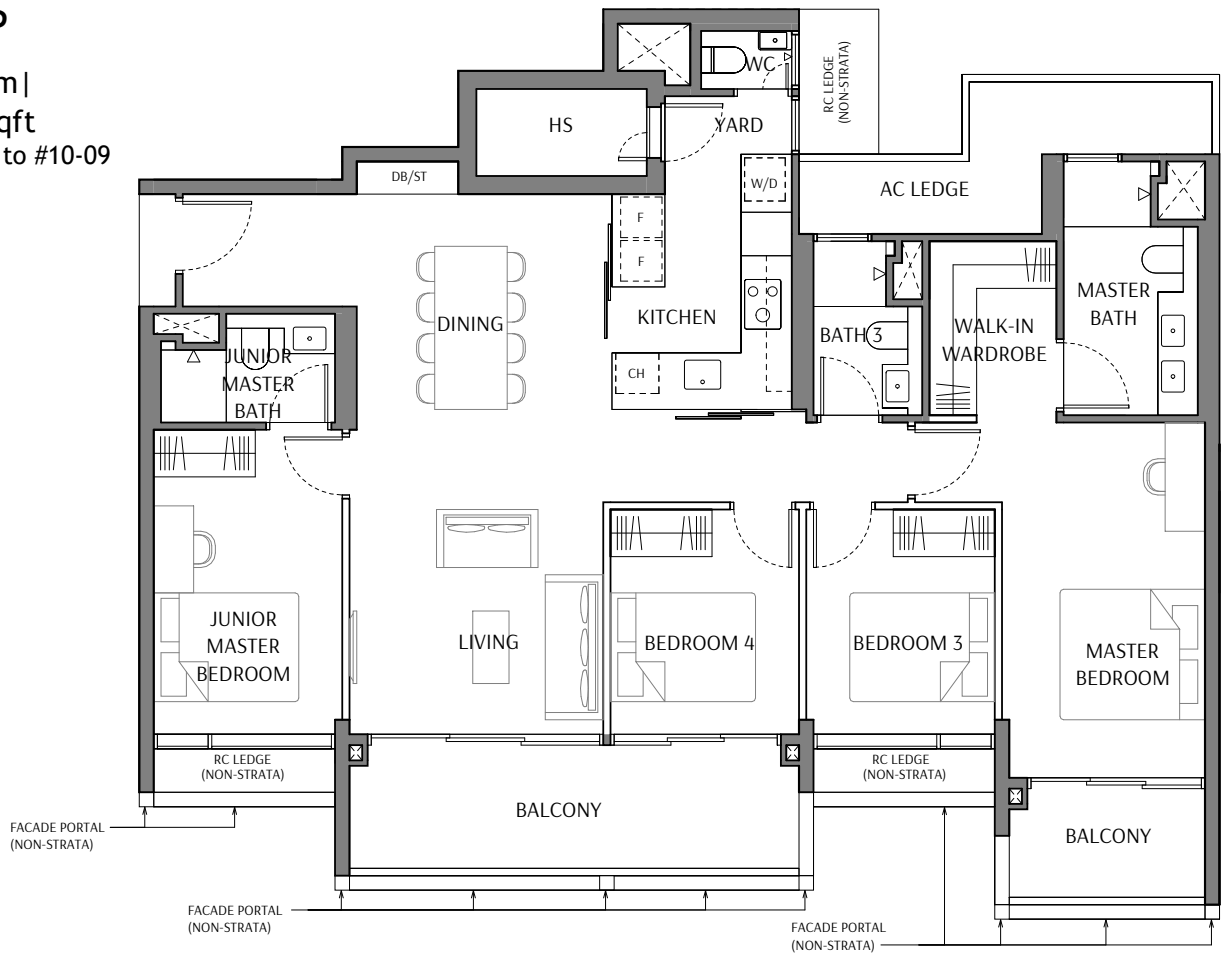


4 BEDROOM PREMIUM

LEGACY COLLECTION

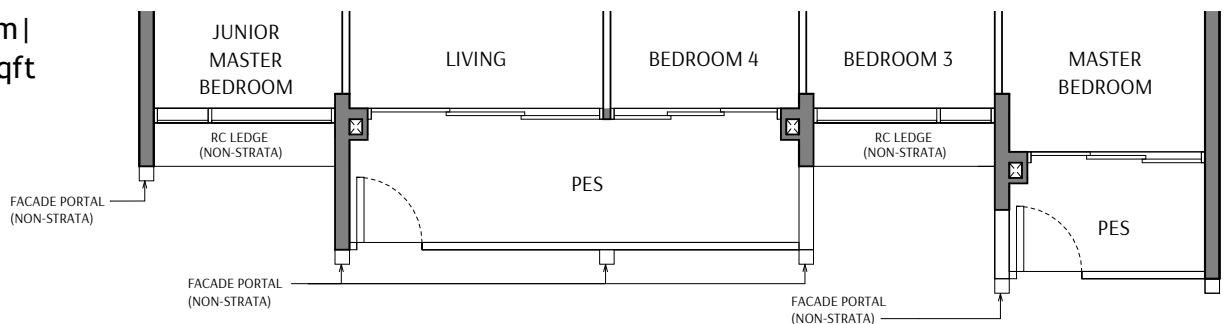
Type D1-P

Area: 143 sqm |
1539 sqft
Unit(s): #03-09 to #10-09



Type D1-P (P)

Area: 143 sqm |
1539 sqft
Unit(s): #02-09

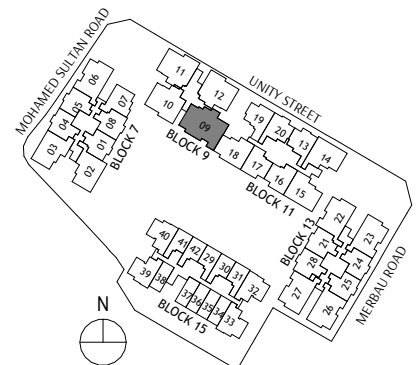


LEGEND

HS - Household Shelter
W/D - Washer and Dryer
F - Refrigerator
CH - Wine Chiller
ST - Storage
DB - Distribution Board
[Symbol] Void Space (excluded from strata area)
[Symbol] Wall not allowed to be hacked or altered

0 1 3 5m

Area includes air conditioner (AC) ledge, balcony, PES and strata void where applicable. RC ledge do not form part of the unit strata area. The above plans are subject to change as may be approved by the relevant authorities. All floor plans are approximate measurements only and are subject to government re-survey. These are for the purpose of visual presentation only. The balcony and PES shall not be enclosed unless with the approved balcony screen. The installation and cost of the screen shall be borne by the purchaser.



2 BEDROOM

LUXURY COLLECTION

Type B2

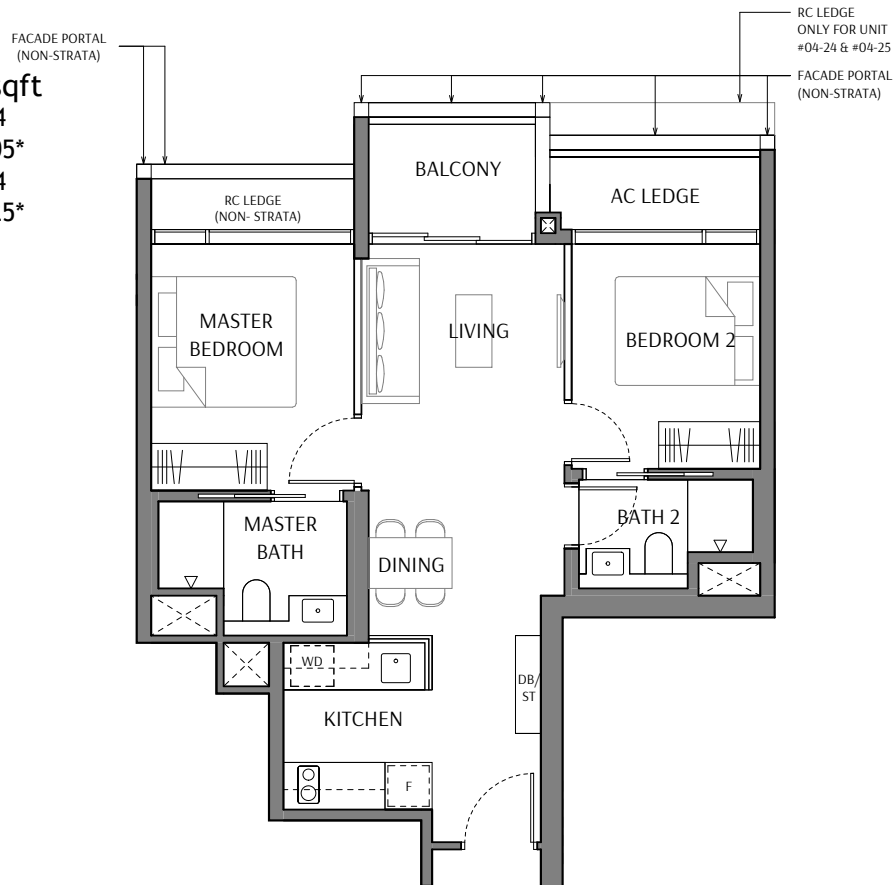
Area: 64 sqm | 689 sqft

Unit(s): #03-04 to #10-04

#03-05* to #10-05*

#04-24 to #10-24

#04-25* to #10-25*

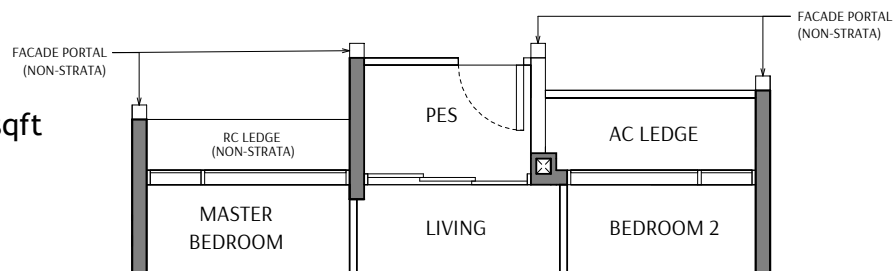


Type B2 (P)

Area: 64 sqm | 689 sqft

Unit(s): #02-04

#02-05*



LEGEND

WD - Washer Cum Dryer

F - Refrigerator

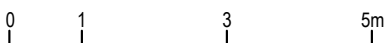
DB - Distribution Board

ST - Storage

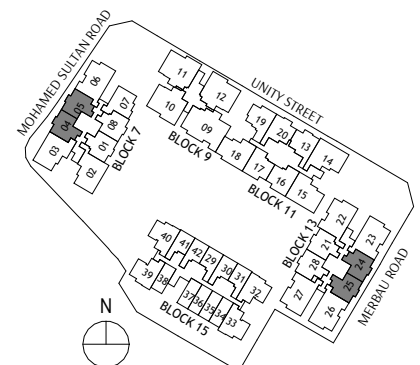
* - Mirrored Unit

[] - Void Space (excluded from strata area)

[] - Wall not allowed to be hacked or altered



Area includes air conditioner (AC) ledge, balcony, PES and strata void where applicable. RC ledge do not form part of the unit strata area. The above plans are subject to change as may be approved by the relevant authorities. All floor plans are approximate measurements only and are subject to government re-survey. These are for the purpose of visual presentation only. The balcony and PES shall not be enclosed unless with the approved balcony screen. The installation and cost of the screen shall be borne by the purchaser.



2 BEDROOM

LUXURY COLLECTION

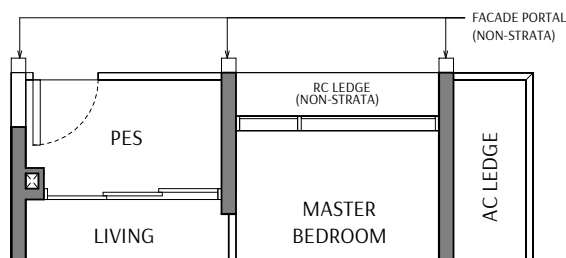
Type B3

Area: 66 sqm | 710 sqft
Unit(s): #03-07 to #10-07



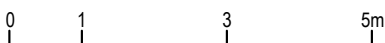
Type B3 (P)

Area: 66 sqm | 710 sqft
Unit(s): #02-07

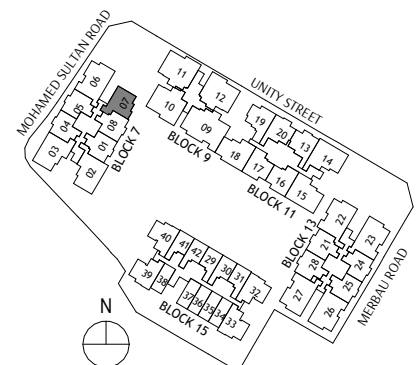


LEGEND

- WD - Washer Cum Dryer
- F - Refrigerator
- DB - Distribution Board
- ST - Storage
- >< Void Space (excluded from strata area)
- Wall not allowed to be hacked or altered



Area includes air conditioner (AC) ledge, balcony, PES and strata void where applicable. RC ledge do not form part of the unit strata area. The above plans are subject to change as may be approved by the relevant authorities. All floor plans are approximate measurements only and are subject to government re-survey. These are for the purpose of visual presentation only. The balcony and PES shall not be enclosed unless with the approved balcony screen. The installation and cost of the screen shall be borne by the purchaser.

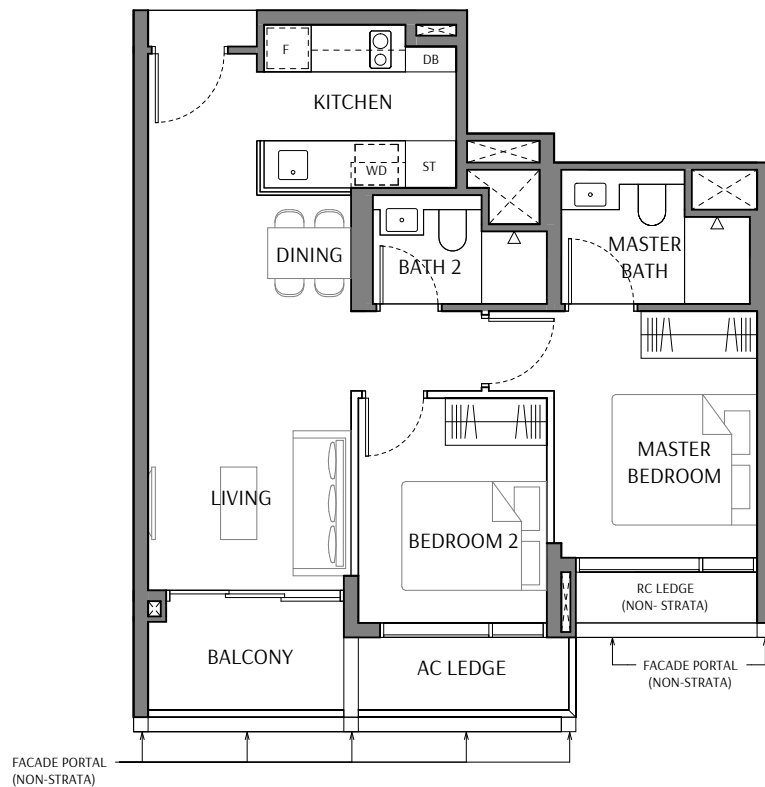


2 BEDROOM

LUXURY COLLECTION

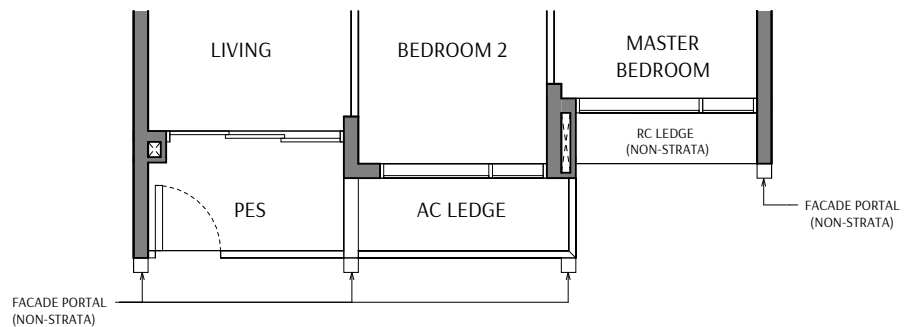
Type B4

Area: 67 sqm | 721 sqft
Unit(s): #03-16* to #10-16*
#03-17 to #10-17



Type B4 (P)

Area: 67 sqm | 721 sqft
Unit(s): #02-16*
#02-17



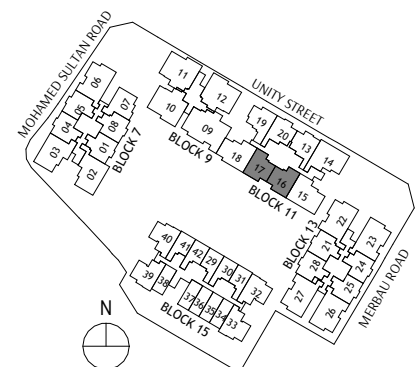
LEGEND

WD - Washer Cum Dryer
F - Refrigerator
DB - Distribution Board
ST - Storage
* - Mirrored Unit

Void Space (excluded from strata area)
 Wall not allowed to be hacked or altered

0 1 3 5m

Area includes air conditioner (AC) ledge, balcony, PES and strata void where applicable. RC ledge do not form part of the unit strata area. The above plans are subject to change as may be approved by the relevant authorities. All floor plans are approximate measurements only and are subject to government re-survey. These are for the purpose of visual presentation only. The balcony and PES shall not be enclosed unless with the approved balcony screen. The installation and cost of the screen shall be borne by the purchaser.

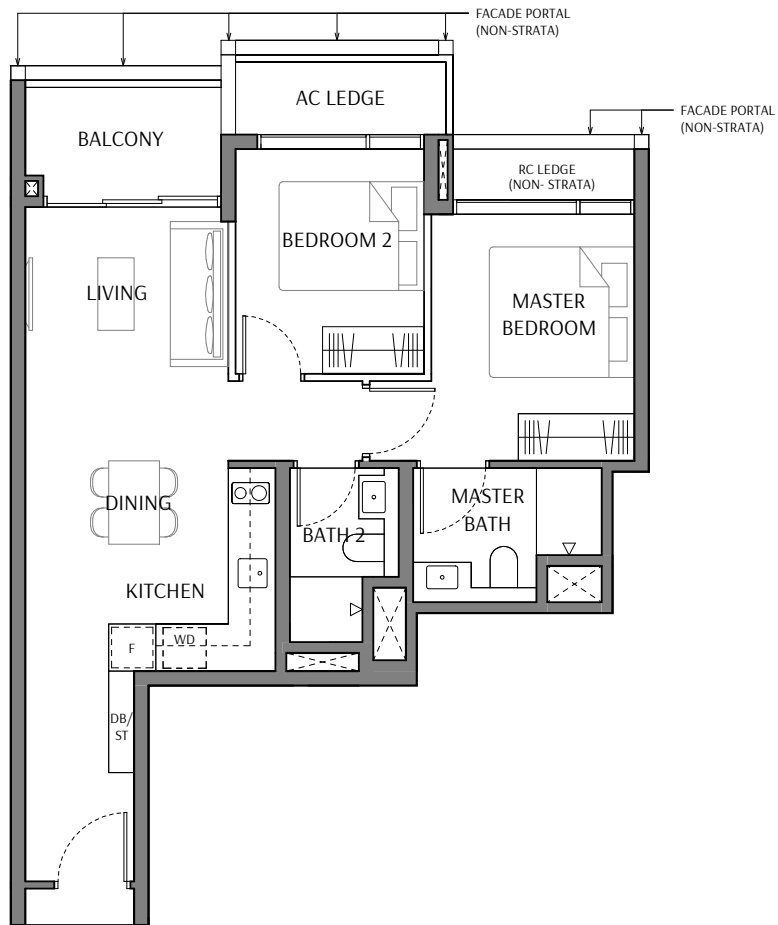


2 BEDROOM

LUXURY COLLECTION

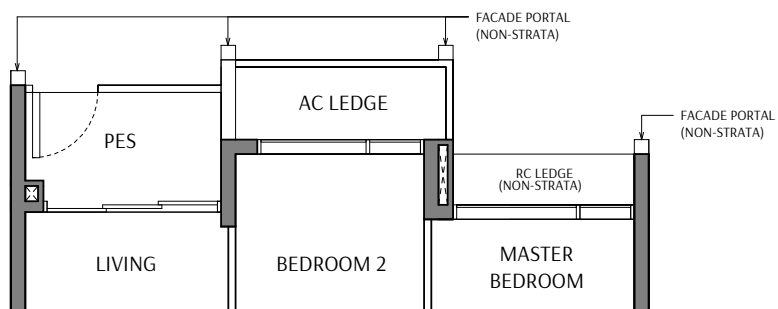
Type B5

Area: 67 sqm | 721 sqft
Unit(s): #03-13* to #10-13*
#03-20 to #10-20



Type B5 (P)

Area: 67 sqm | 721 sqft
Unit(s): #02-13*
#02-20



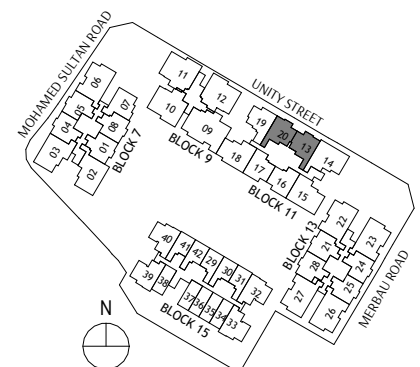
LEGEND

WD - Washer Cum Dryer
F - Refrigerator
DB - Distribution Board
ST - Storage
* - Mirrored Unit

Void Space (excluded from strata area)
Wall not allowed to be hacked or altered

0 1 3 5m

Area includes air conditioner (AC) ledge, balcony, PES and strata void where applicable. RC ledge do not form part of the unit strata area. The above plans are subject to change as may be approved by the relevant authorities. All floor plans are approximate measurements only and are subject to government re-survey. These are for the purpose of visual presentation only. The balcony and PES shall not be enclosed unless with the approved balcony screen. The installation and cost of the screen shall be borne by the purchaser.

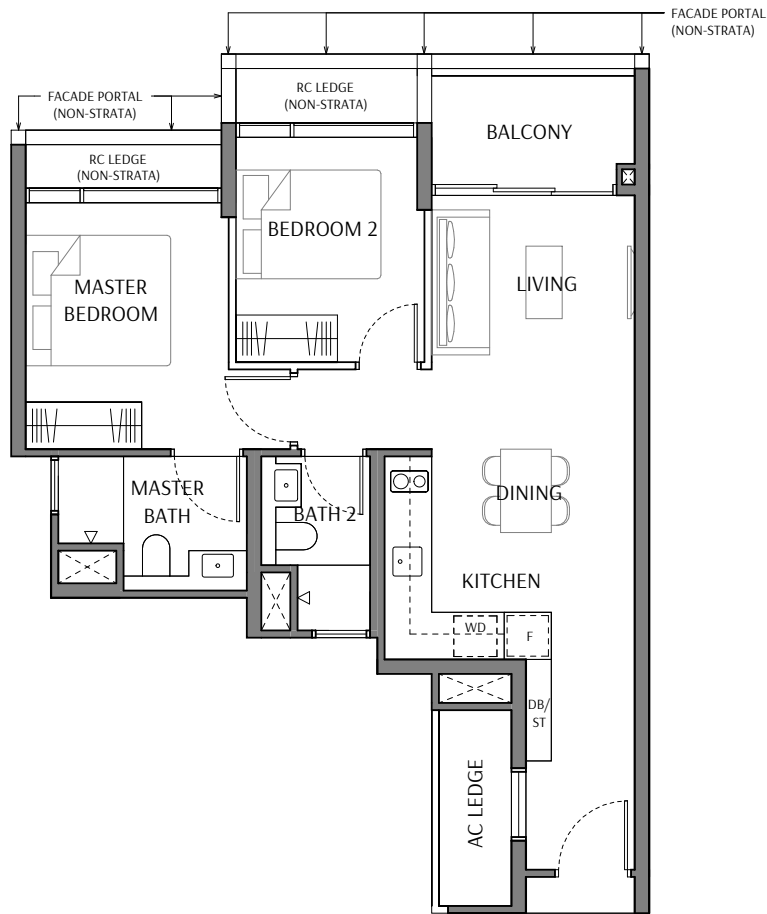


2 BEDROOM

LUXURY COLLECTION

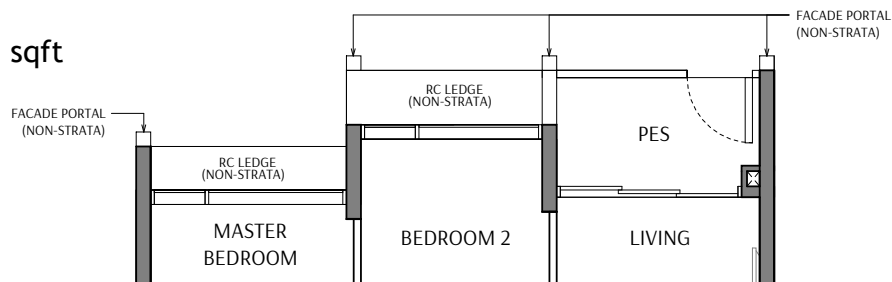
Type B6

Area: 67 sqm | 721 sqft
Unit(s): #03-19 to #10-19



Type B6 (P)

Area: 67 sqm | 721 sqft
Unit(s): #02-19



LEGEND

WD - Washer Cum Dryer

F - Refrigerator

DB - Distribution Board

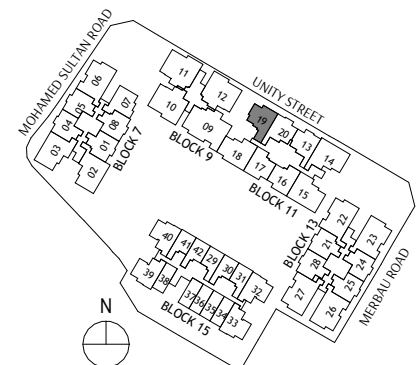
ST - Storage

Void Space (excluded from strata area)

Wall not allowed to be hacked or altered



Area includes air conditioner (AC) ledge, balcony, PES and strata void where applicable. RC ledge do not form part of the unit strata area. The above plans are subject to change as may be approved by the relevant authorities. All floor plans are approximate measurements only and are subject to government re-survey. These are for the purpose of visual presentation only. The balcony and PES shall not be enclosed unless with the approved balcony screen. The installation and cost of the screen shall be borne by the purchaser.



2 BEDROOM + STUDY

LUXURY COLLECTION

Type B7-S

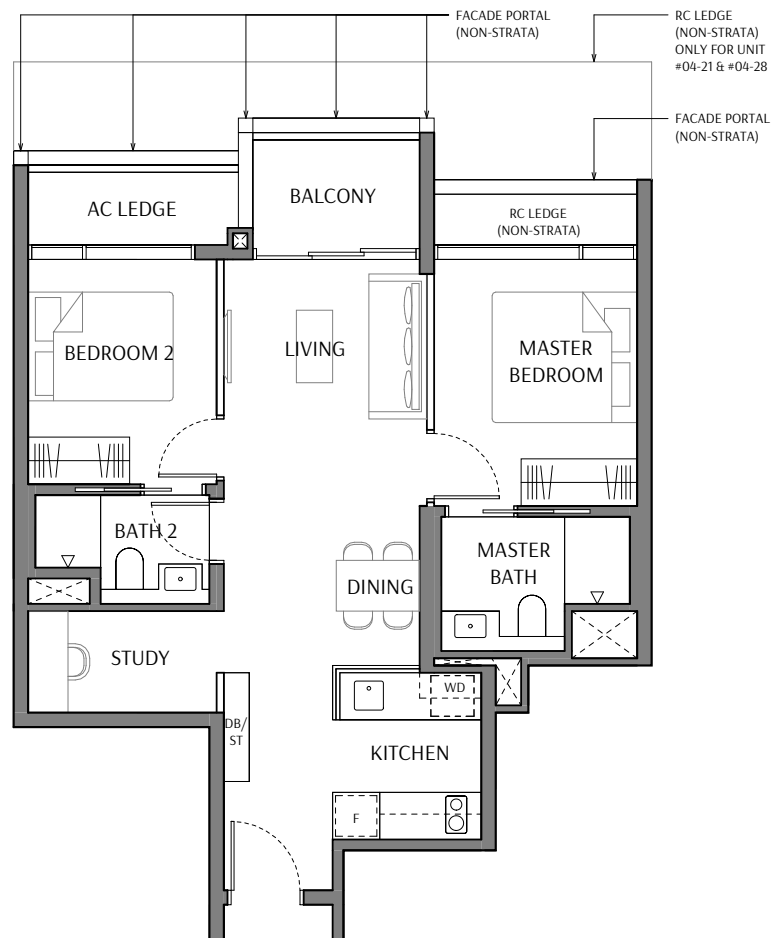
Area: 69 sqm | 743 sqft

Unit(s): #03-01 to #10-01

#03-08* to #10-08*

#04-21 to #10-21

#04-28* to #10-28*

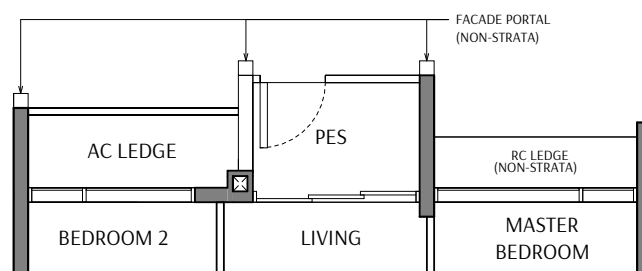


Type B7-S (P)

Area: 69 sqm | 743 sqft

Unit(s): #02-01

#02-08*



LEGEND

WD - Washer Cum Dryer

F - Refrigerator

DB - Distribution Board

ST - Storage

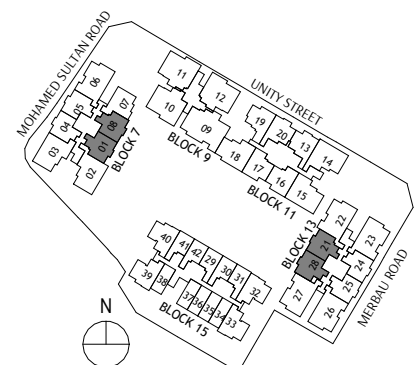
* - Mirrored Unit

[Hatched Box] Void Space (excluded from strata area)

[Solid Grey Box] Wall not allowed to be hacked or altered



Area includes air conditioner (AC) ledge, balcony, PES and strata void where applicable. RC ledge do not form part of the unit strata area. The above plans are subject to change as may be approved by the relevant authorities. All floor plans are approximate measurements only and are subject to government re-survey. These are for the purpose of visual presentation only. The balcony and PES shall not be enclosed unless with the approved balcony screen. The installation and cost of the screen shall be borne by the purchaser.



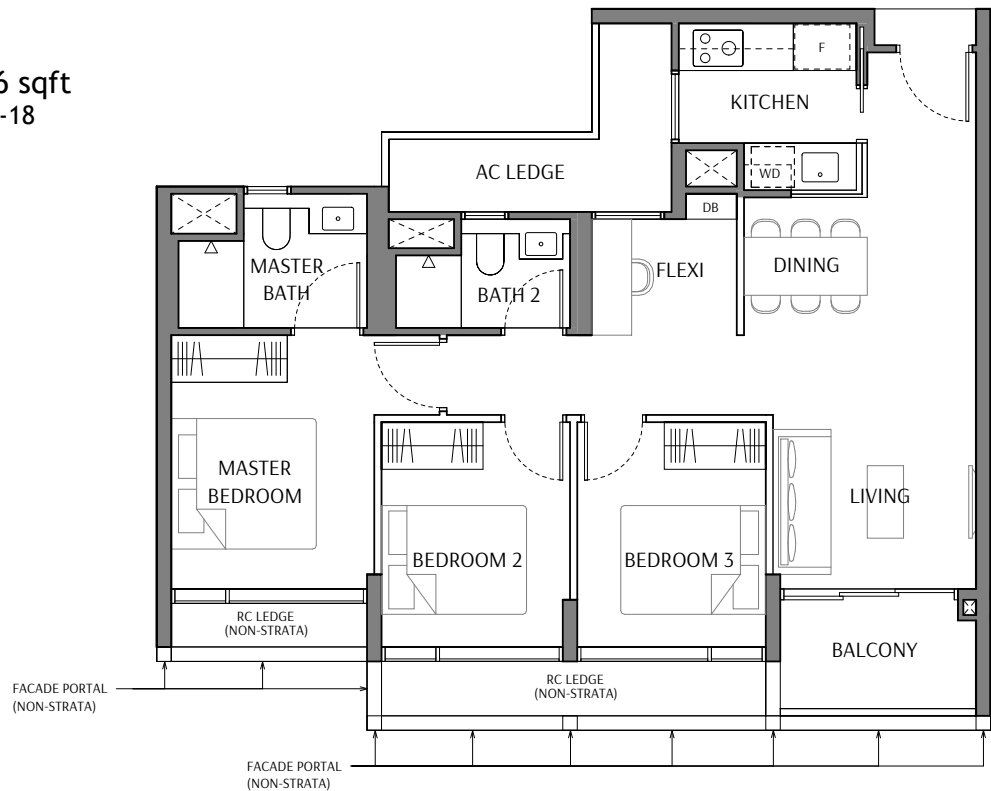
3 BEDROOM + FLEXI

LUXURY COLLECTION

Type C1-S

Area: 86 sqm | 926 sqft

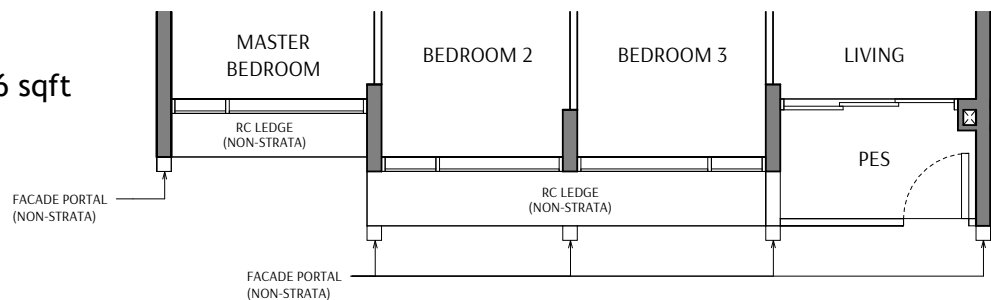
Unit(s): #03-18 to #10-18



Type C1-S (P)

Area: 86 sqm | 926 sqft

Unit(s): #02-18



LEGEND

WD - Washer Cum Dryer

F - Refrigerator

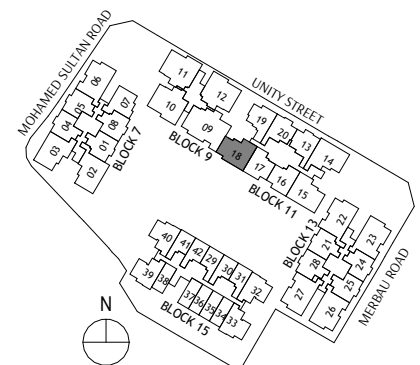
DB - Distribution Board

Void Space (excluded from strata area)

Wall not allowed to be hacked or altered



Area includes air conditioner (AC) ledge, balcony, PES and strata void where applicable. RC ledge do not form part of the unit strata area. The above plans are subject to change as may be approved by the relevant authorities. All floor plans are approximate measurements only and are subject to government re-survey. These are for the purpose of visual presentation only. The balcony and PES shall not be enclosed unless with the approved balcony screen. The installation and cost of the screen shall be borne by the purchaser.

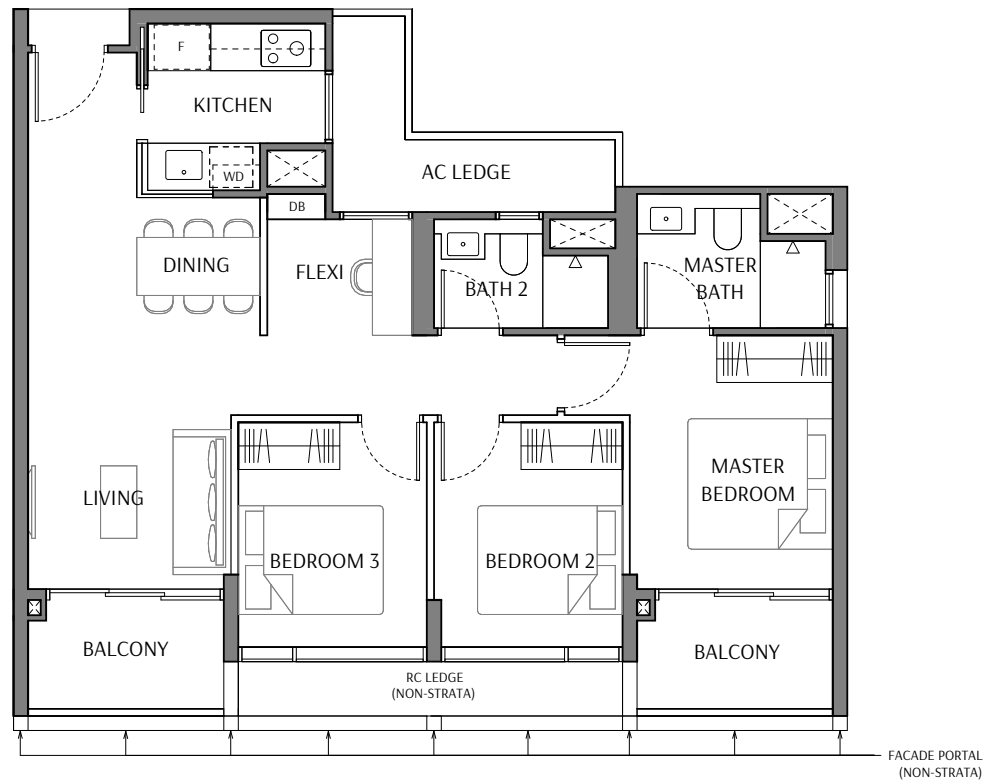


3 BEDROOM + FLEXI

LUXURY COLLECTION

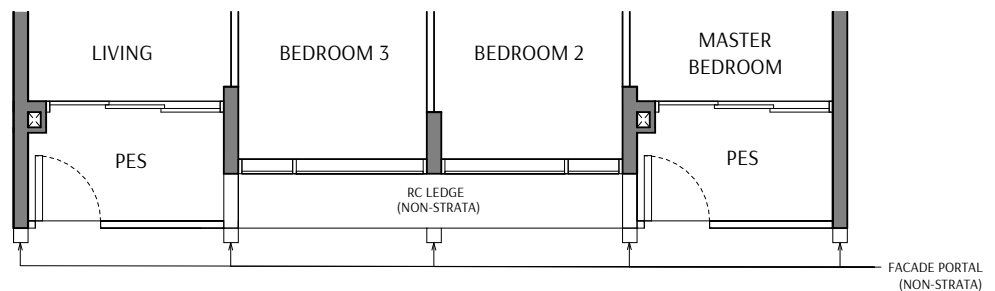
Type C2-S

Area: 91 sqm | 980 sqft
Unit(s): #03-15 to #10-15



Type C2-S (P)

Area: 91 sqm | 980 sqft
Unit(s): #02-15

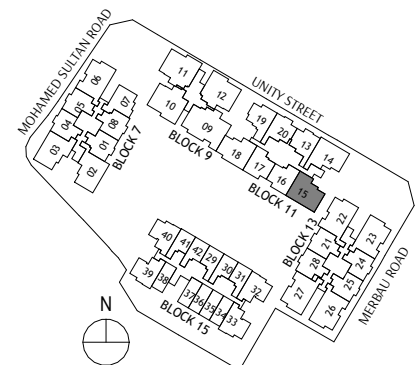


LEGEND

- WD - Washer Cum Dryer
- F - Refrigerator
- DB - Distribution Board
- < > Void Space (excluded from strata area)
- Wall not allowed to be hacked or altered



Area includes air conditioner (AC) ledge, balcony, PES and strata void where applicable. RC ledge do not form part of the unit strata area. The above plans are subject to change as may be approved by the relevant authorities. All floor plans are approximate measurements only and are subject to government re-survey. These are for the purpose of visual presentation only. The balcony and PES shall not be enclosed unless with the approved balcony screen. The installation and cost of the screen shall be borne by the purchaser.

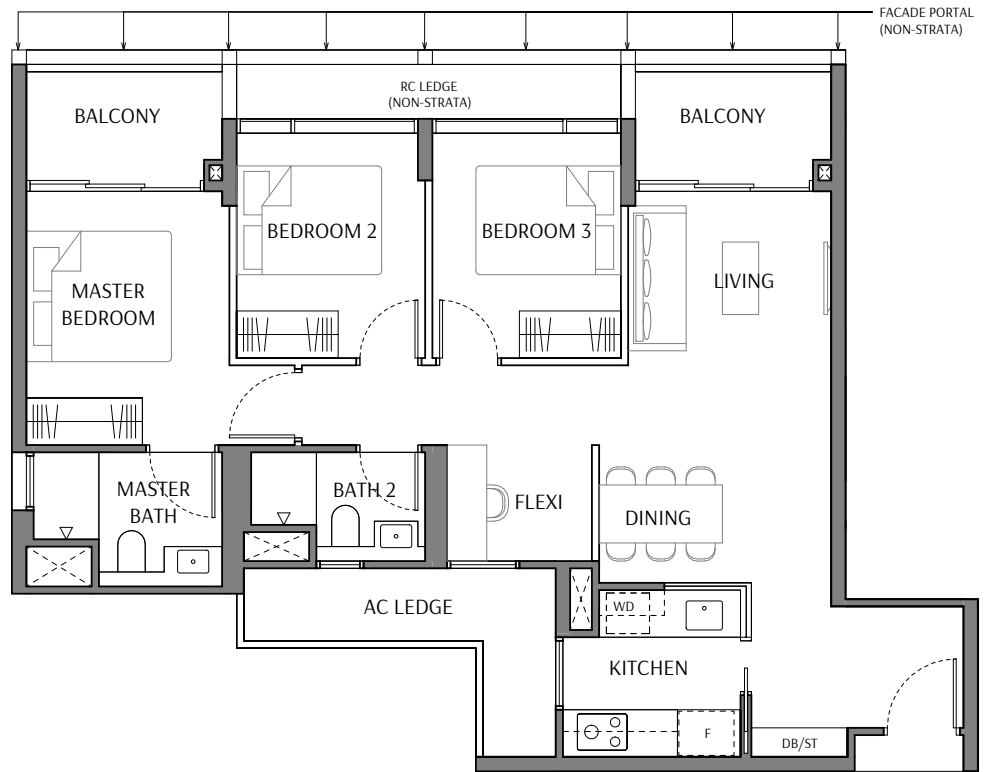


3 BEDROOM + FLEXI

LUXURY COLLECTION

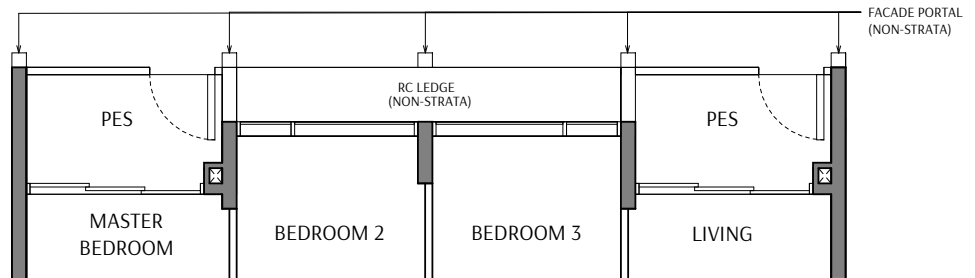
Type C3-S

Area: 94 sqm | 1012 sqft
Unit(s): #03-03 to #10-03



Type C3-S (P)

Area: 94 sqm | 1012 sqft
Unit(s): #02-03



LEGEND

WD - Washer Cum Dryer

F - Refrigerator

DB - Distribution Board

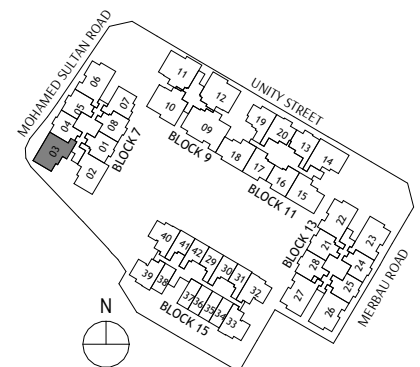
ST - Storage

>< Void Space (excluded from strata area)

Wall not allowed to be hacked or altered



Area includes air conditioner (AC) ledge, balcony, PES and strata void where applicable. RC ledge do not form part of the unit strata area. The above plans are subject to change as may be approved by the relevant authorities. All floor plans are approximate measurements only and are subject to government re-survey. These are for the purpose of visual presentation only. The balcony and PES shall not be enclosed unless with the approved balcony screen. The installation and cost of the screen shall be borne by the purchaser.

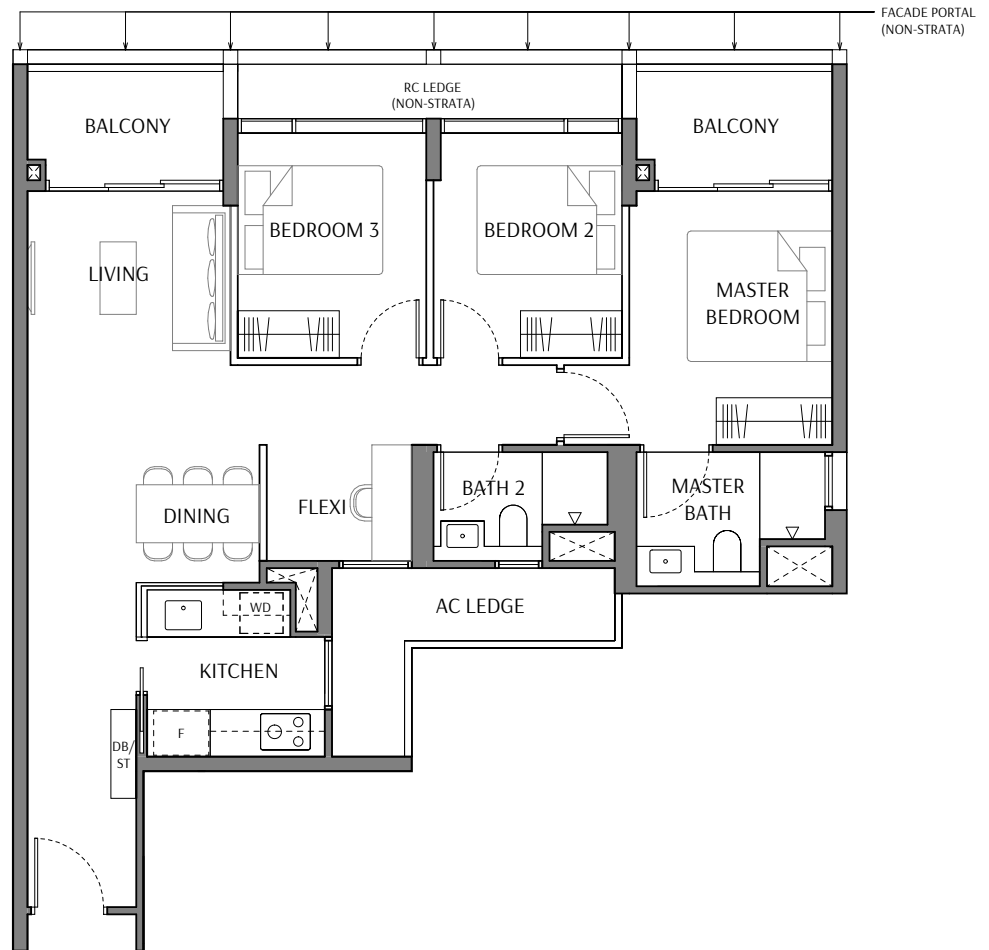


3 BEDROOM + FLEXI

LUXURY COLLECTION

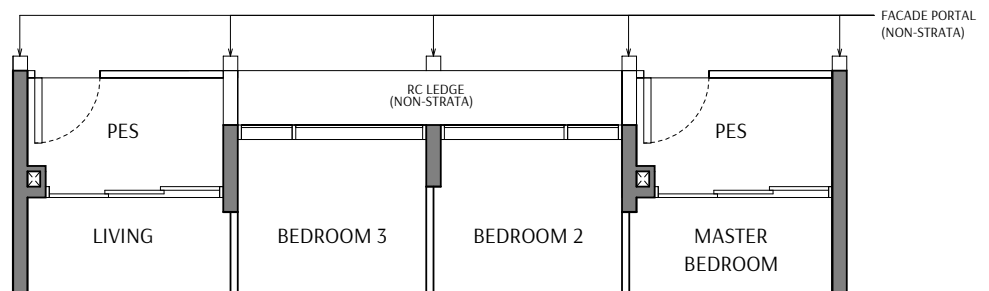
Type C4-S

Area: 95 sqm | 1023 sqft
Unit(s): #03-14 to #10-14



Type C4-S (P)

Area: 95 sqm | 1023 sqft
Unit(s): #02-14



LEGEND

WD - Washer Cum Dryer

F - Refrigerator

DB - Distribution Board

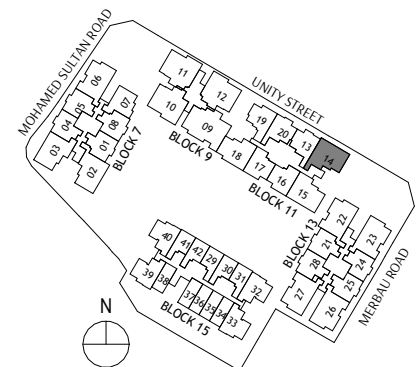
ST - Storage

Void Space (excluded from strata area)

Wall not allowed to be hacked or altered



Area includes air conditioner (AC) ledge, balcony, PES and strata void where applicable. RC ledge do not form part of the unit strata area. The above plans are subject to change as may be approved by the relevant authorities. All floor plans are approximate measurements only and are subject to government re-survey. These are for the purpose of visual presentation only. The balcony and PES shall not be enclosed unless with the approved balcony screen. The installation and cost of the screen shall be borne by the purchaser.

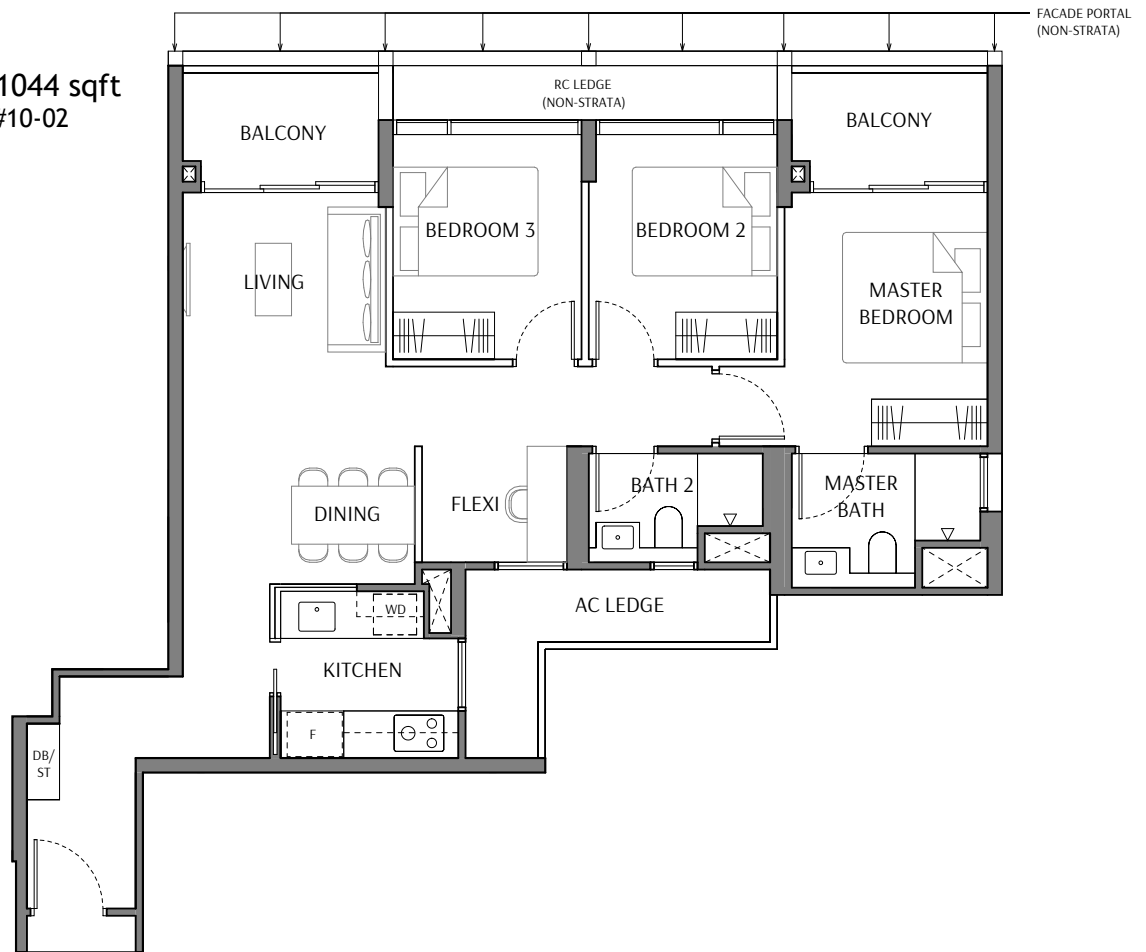


3 BEDROOM + FLEXI

LUXURY COLLECTION

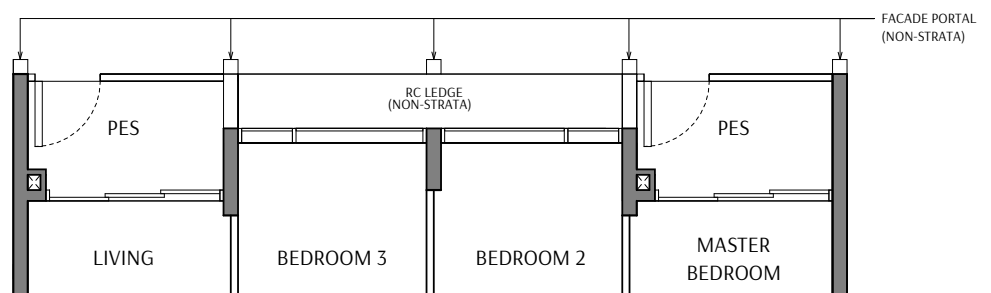
Type C5-S

Area: 97 sqm | 1044 sqft
Unit(s): #03-02 to #10-02



Type C5-S (P)

Area: 97 sqm | 1044 sqft
Unit(s): #02-02

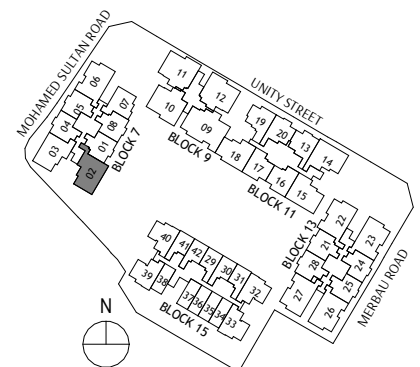


LEGEND

- WD - Washer Cum Dryer
- F - Refrigerator
- DB - Distribution Board
- ST - Storage
- < > Void Space (excluded from strata area)
- Wall not allowed to be hacked or altered



Area includes air conditioner (AC) ledge, balcony, PES and strata void where applicable. RC ledge do not form part of the unit strata area. The above plans are subject to change as may be approved by the relevant authorities. All floor plans are approximate measurements only and are subject to government re-survey. These are for the purpose of visual presentation only. The balcony and PES shall not be enclosed unless with the approved balcony screen. The installation and cost of the screen shall be borne by the purchaser.



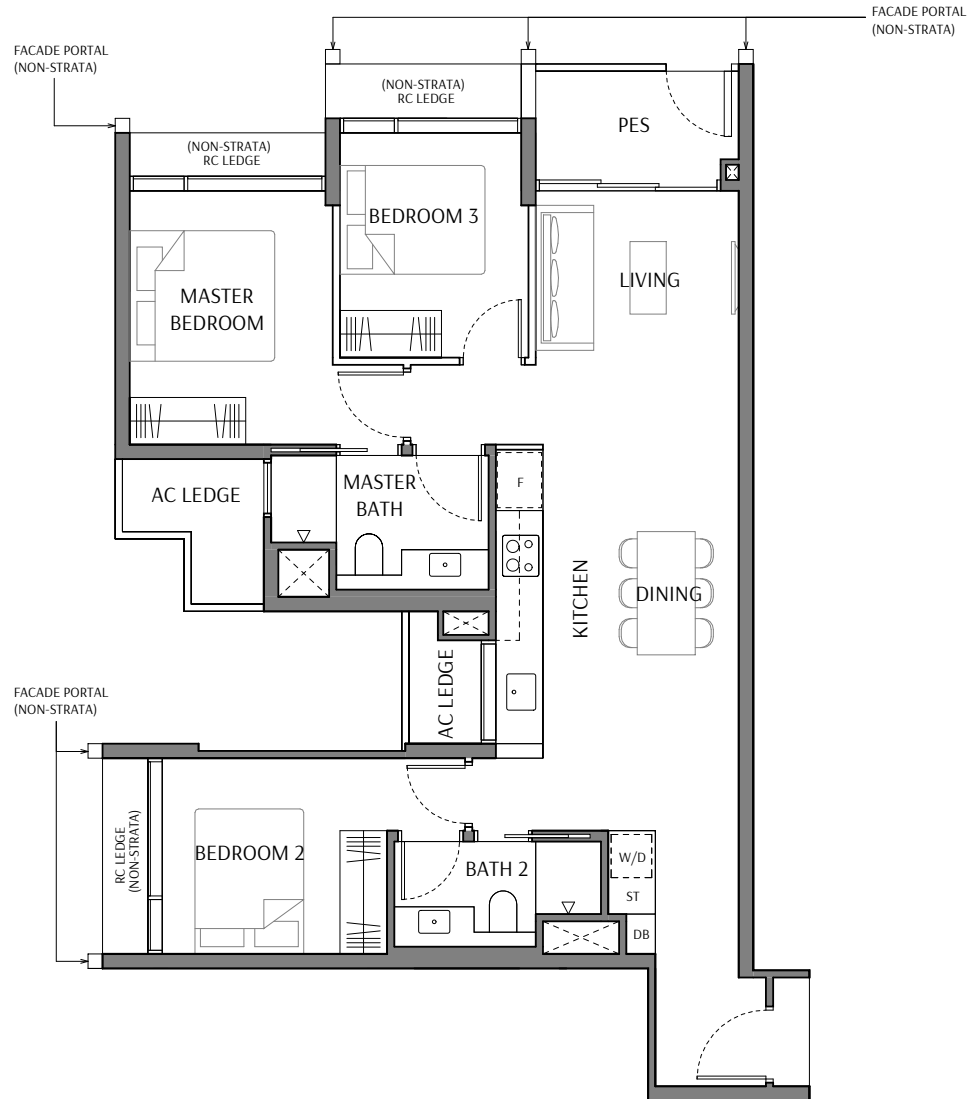
3 BEDROOM DUOFLEX

LUXURY COLLECTION

Type C6 (P)

Area: 92 sqm | 990 sqft

Unit(s): #02-06



LEGEND

W/D - Washer and Dryer

F - Refrigerator

DB - Distribution Board

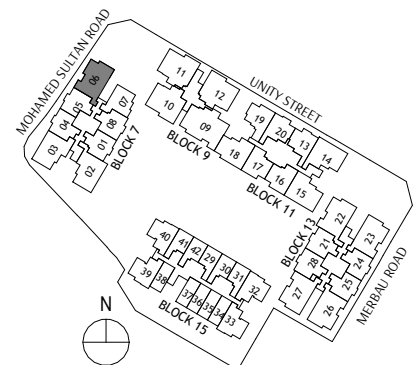
ST - Storage

Void Space (excluded from strata area)

Wall not allowed to be hacked or altered



Area includes air conditioner (AC) ledge, balcony, PES and strata void where applicable. RC ledge do not form part of the unit strata area. The above plans are subject to change as may be approved by the relevant authorities. All floor plans are approximate measurements only and are subject to government re-survey. These are for the purpose of visual presentation only. The balcony and PES shall not be enclosed unless with the approved balcony screen. The installation and cost of the screen shall be borne by the purchaser.



3 BEDROOM DUOFLEX

LUXURY COLLECTION

Type C6

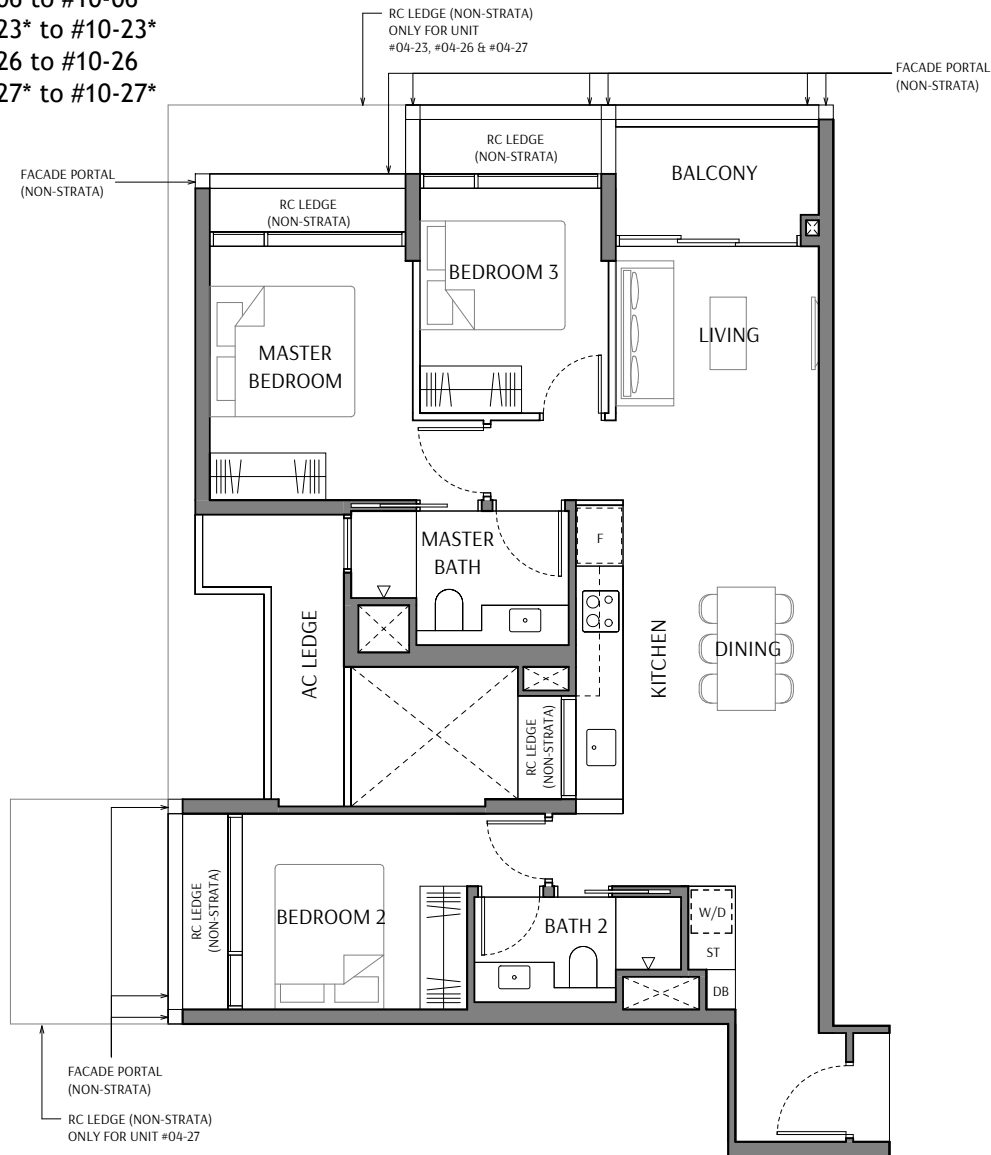
Area: 92 sqm | 990 sqft

Unit(s): #03-06 to #10-06

#04-23* to #10-23*

#04-26 to #10-26

#04-27* to #10-27*



LEGEND

W/D - Washer and Dryer

F - Refrigerator

DB - Distribution Board

ST - Storage

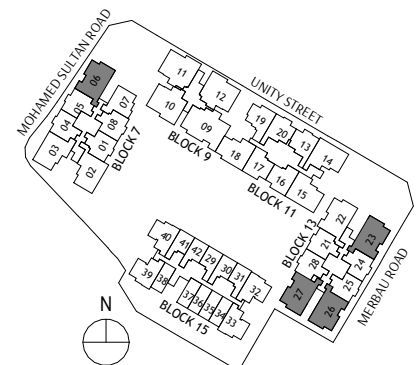
* - Mirrored Unit

□ > < □ Void Space (excluded from strata area)

■ Wall not allowed to be hacked or altered



Area includes air conditioner (AC) ledge, balcony, PES and strata void where applicable. RC ledge do not form part of the unit strata area. The above plans are subject to change as may be approved by the relevant authorities. All floor plans are approximate measurements only and are subject to government re-survey. These are for the purpose of visual presentation only. The balcony and PES shall not be enclosed unless with the approved balcony screen. The installation and cost of the screen shall be borne by the purchaser.



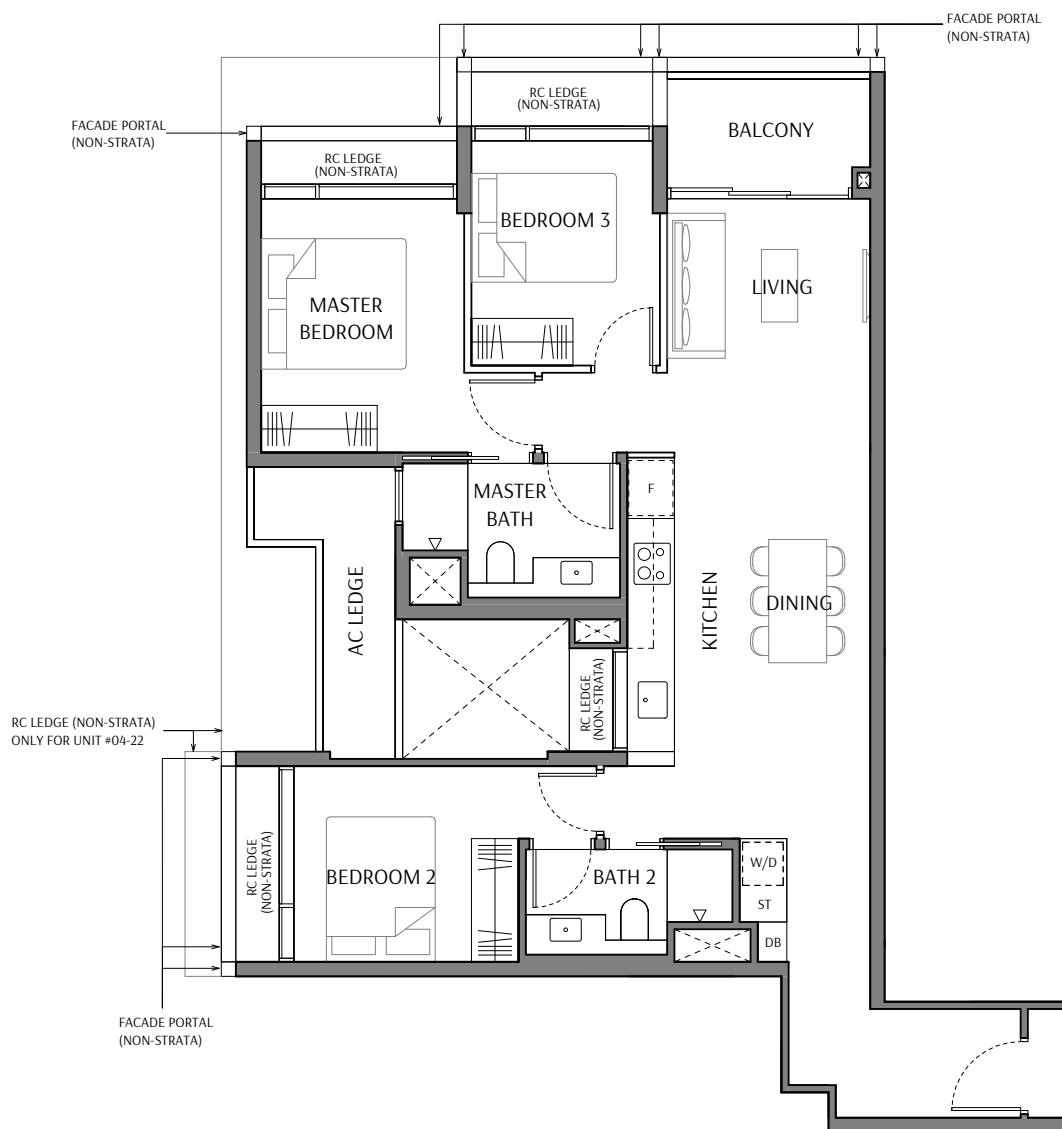
3 BEDROOM DUOFLEX

LUXURY COLLECTION

Type C7

Area: 95 sqm | 1023 sqft

Unit(s): #04-22 to #10-22



LEGEND

W/D - Washer and Dryer

F - Refrigerator

DB - Distribution Board

ST - Storage

Void Space (excluded from strata area)

Wall not allowed to be hacked or altered



Area includes air conditioner (AC) ledge, balcony, PES and strata void where applicable. RC ledge do not form part of the unit strata area. The above plans are subject to change as may be approved by the relevant authorities. All floor plans are approximate measurements only and are subject to government re-survey. These are for the purpose of visual presentation only. The balcony and PES shall not be enclosed unless with the approved balcony screen. The installation and cost of the screen shall be borne by the purchaser.

