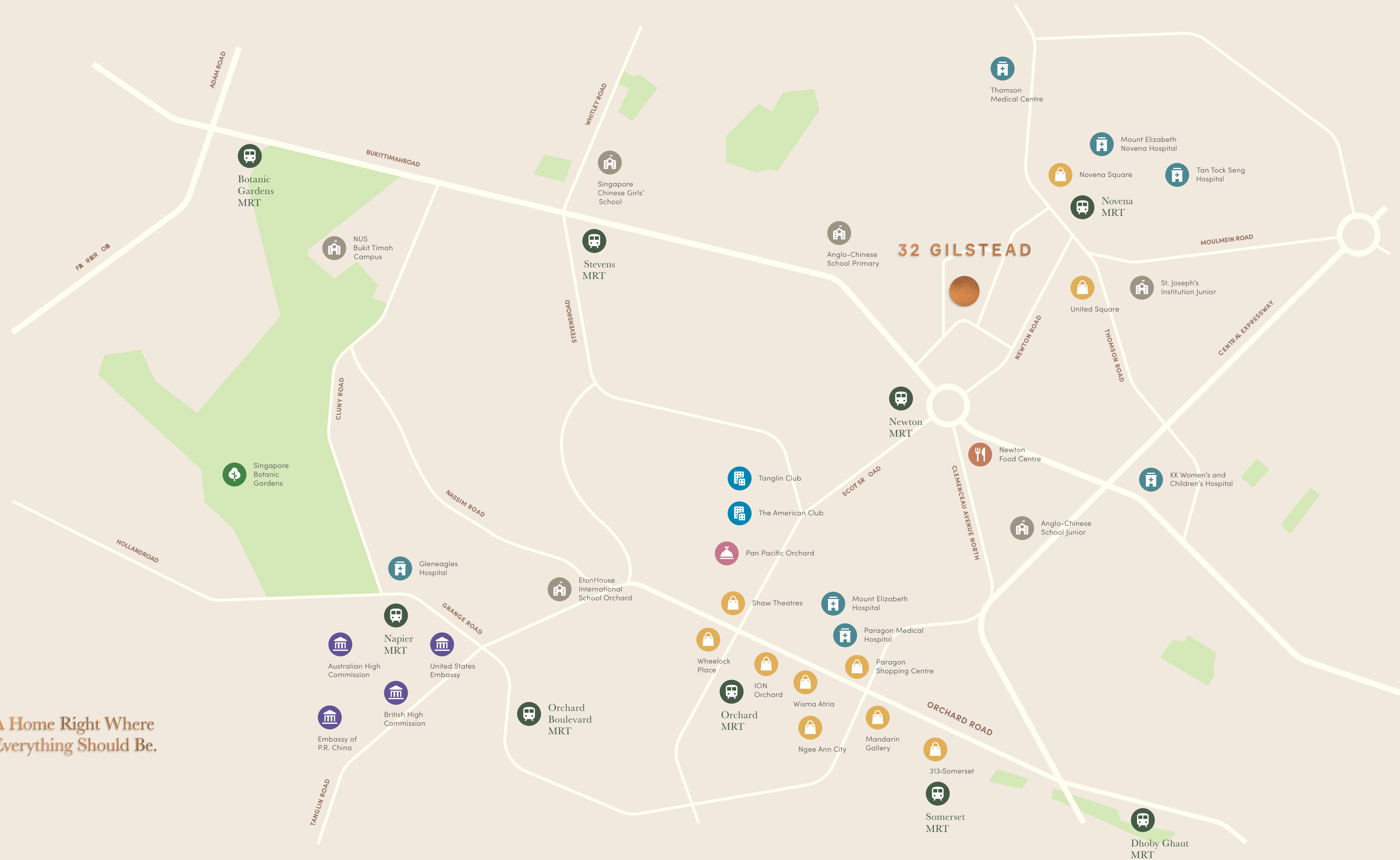


Designed and Built Around You,
Cherished Across Generations.

A Home Right Where
Everything Should Be.



32 GILSTEAD

Botanic
Gardens
MRT

NUS
Bukit Timah
Campus

Stevens
MRT

Anglo-Chinese
School Primary

Thomson
Medical Centre

Mount Elizabeth
Novena Hospital

Novena Square

Tan Tock Seng
Hospital

Novena
MRT

MOULMEIN ROAD

United Square

St. Joseph's
Institution Junior

Newton
MRT

THOMSON ROAD

Newton
Food Centre

KK Women's and
Children's Hospital

Tanglin Club

The American Club

Pan Pacific Orchard

Anglo-Chinese
School Junior

Gleneagles
Hospital

EtonHouse
International
School Orchard

Shaw Theatres

Mount Elizabeth
Hospital

Napier
MRT

Australian High
Commission

United States
Embassy

Wheelock
Place

ION
Orchard

Wisma Atria

Paragon Medical
Hospital

Paragon
Shopping Centre

Embassy of
P.R. China

British High
Commission

Orchard
Boulevard
MRT

Orchard
MRT

Ngee Ann City

Mandarin
Gallery

ORCHARD ROAD

313Somerset

Somerset
MRT

Dhoby Ghaut
MRT

TANGLIN ROAD



“I try to create beautiful and spiritual-oriented exterior design in harmony with the architecture and the interior. Sharpen your senses and find true richness in simplicity. I create spaces of ‘Extremely Simple and Pure Beauty.’ I would be grateful if people living here could experience being in this space and feel it firsthand.”

SHUNMYO MASUNO
Landscape Architect

枡野俊明



Every element is chosen to evoke a deep sense of calm.



Bamboo Grove with Stone Benches and Low Waterfall



Building Façade with Landscaped Bamboo Garden

A timeless design with unrivalled living comfort, set amidst a lush and tranquil landscaped bamboo garden.



“The central idea for 32 Gilstead is to attain reduction through a clarity that emerges from the anonymous simplicity of ordinary things. The combination of elements like the fins and stone cladding of the main block create a composition of simplicity that belies its strength.”

ERNESTO BEDMAR
Principal Architect & Director,
Ernesto Bedmar Architects



Arrival Lobby with Dedicated Private Lift Access

The arrival lobby is accentuated by the expanse of twin reflecting pools.



“32 Gilstead is an exceptional space that is carefully composed, both aesthetically and functionally, using elegant, understated materials and colours to achieve a refined simplicity for one’s own enjoyment. Tactility, presented in the form of details and craftsmanship, create a timeless sense of luxury.”

KOICHIRO IKEBUCHI
Atelier Ikebuchi

Private Lift Opening with Bespoke Library Bar



Living Room with Balcony View of Garden

Spacious interiors that exude comfort and sophistication in every detail.



Library Salon with Stucco Spatulata Finished Ceiling

Bask in the ambience of spaces
made for quieter moments.



Master Bedroom



Walk-in Wardrobe



Master Ensuite



Ensuite Bedroom



Colours and materials are brought into harmony with their surroundings.



Wet and Dry Kitchens with Island Counter



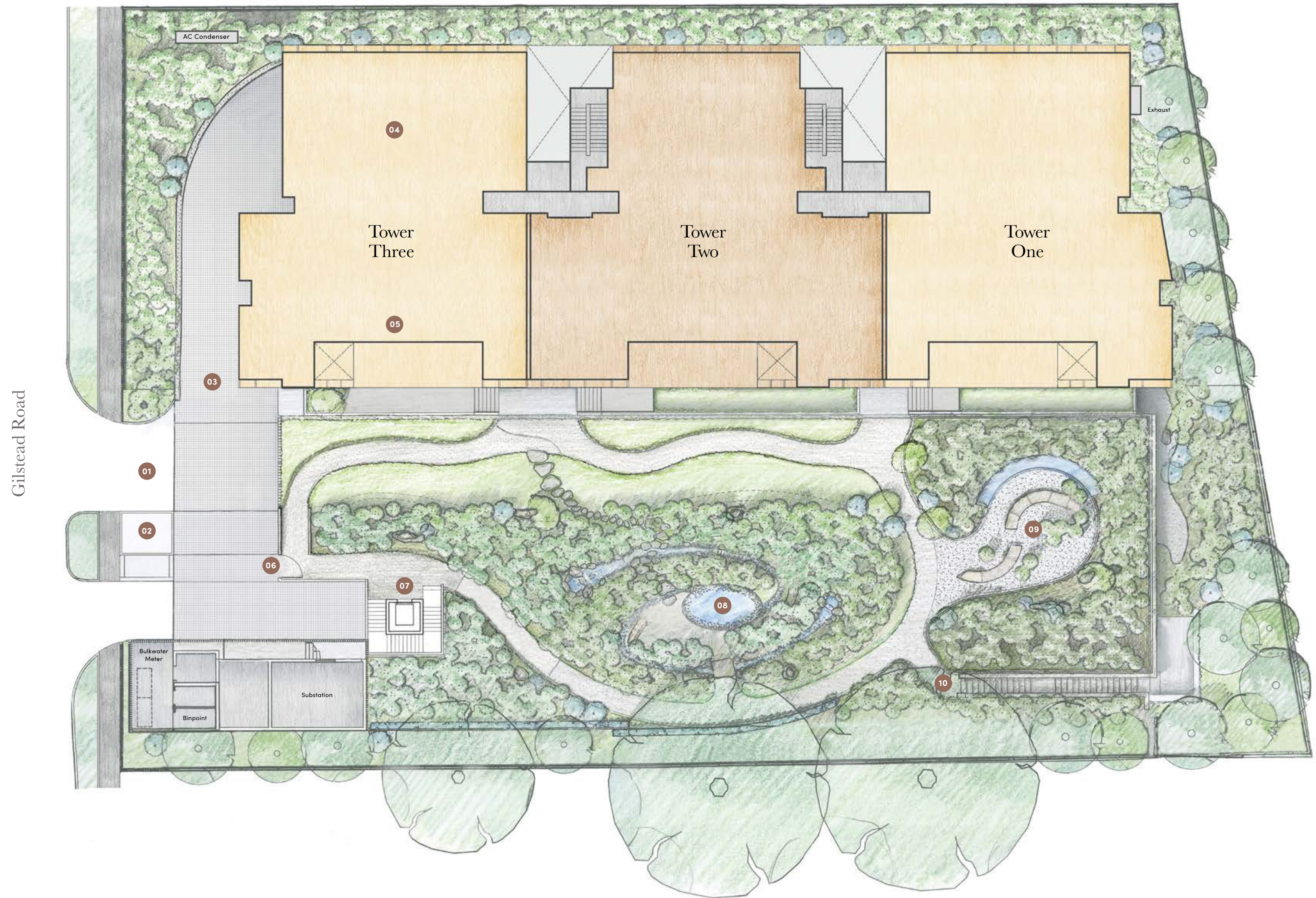
The Clubhouse

The Clubhouse features a cosy dining room with a generous 14-seater for relaxing and entertaining.



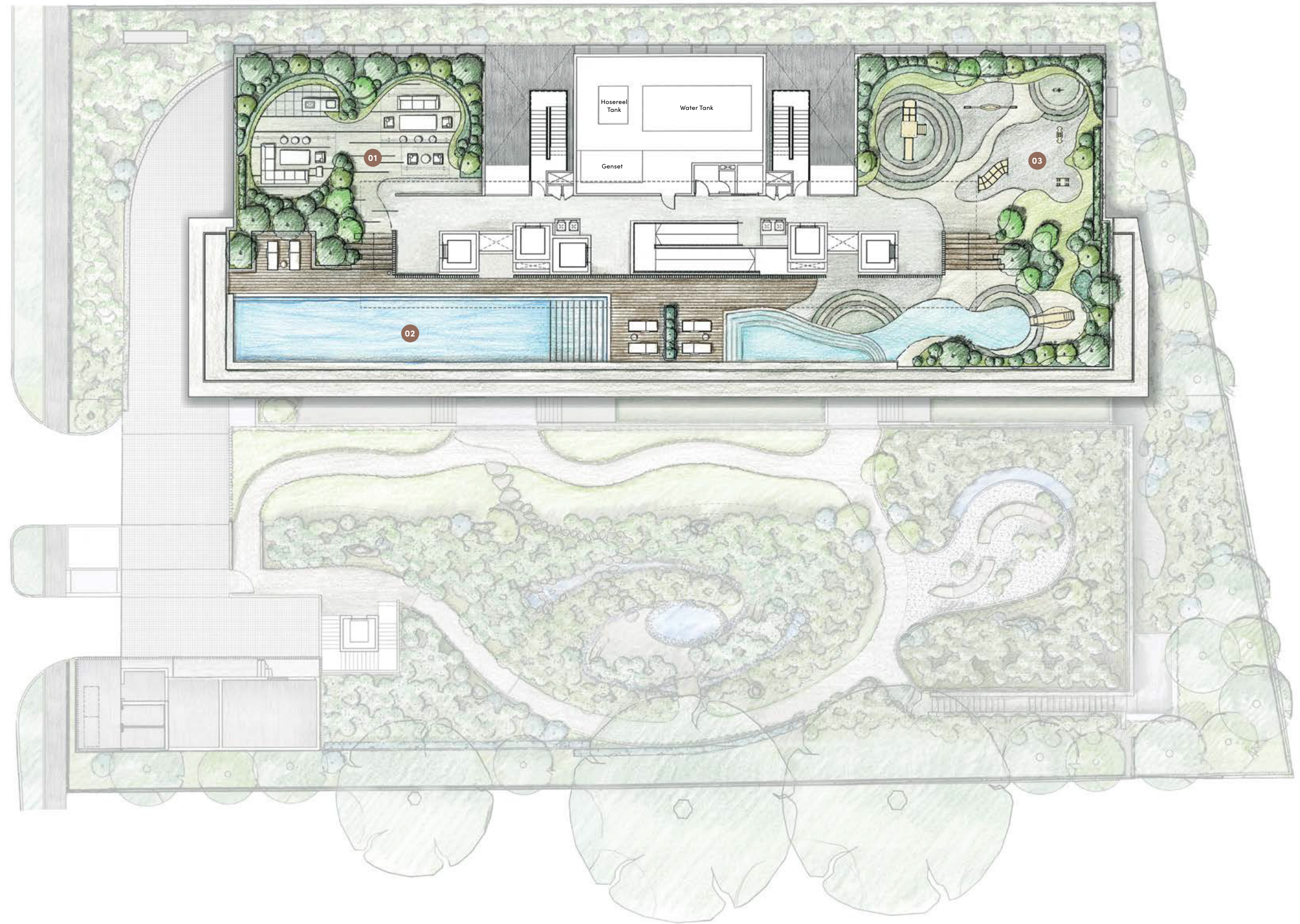
SITE PLAN

- 01 Main Entrance
- 02 Guardhouse
- 03 Ramp to Drop-off
- 04 Gym
- 05 Clubhouse
- 06 Pedestrian Entrance
- 07 Lift/Stairs to Carpark
- 08 Bamboo Garden
- 09 Bamboo Garden
- 10 Garden Stairs to Lower Ground



ROOF GARDEN

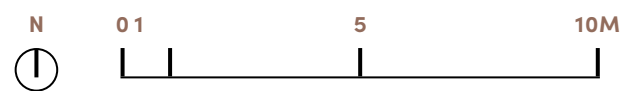
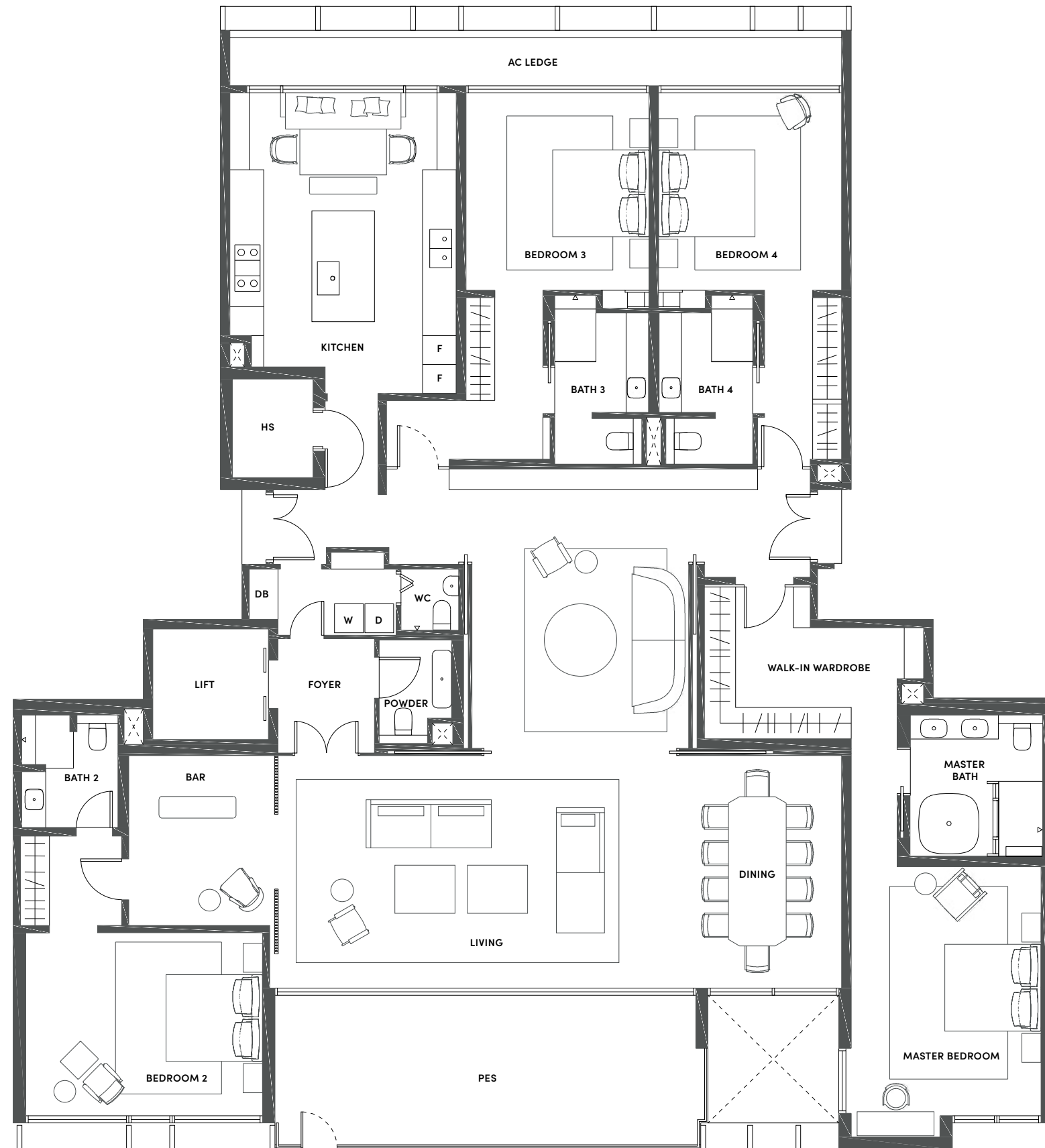
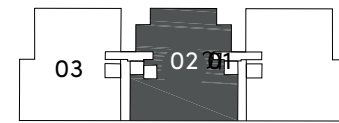
- 01 Barbecue Area
- 02 Swimming Pool
- 03 Children's Playground



TYPE D2P • 4 BEDROOM

355 m² / 3,821 ft²

Units: #01-02

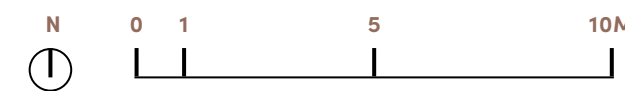
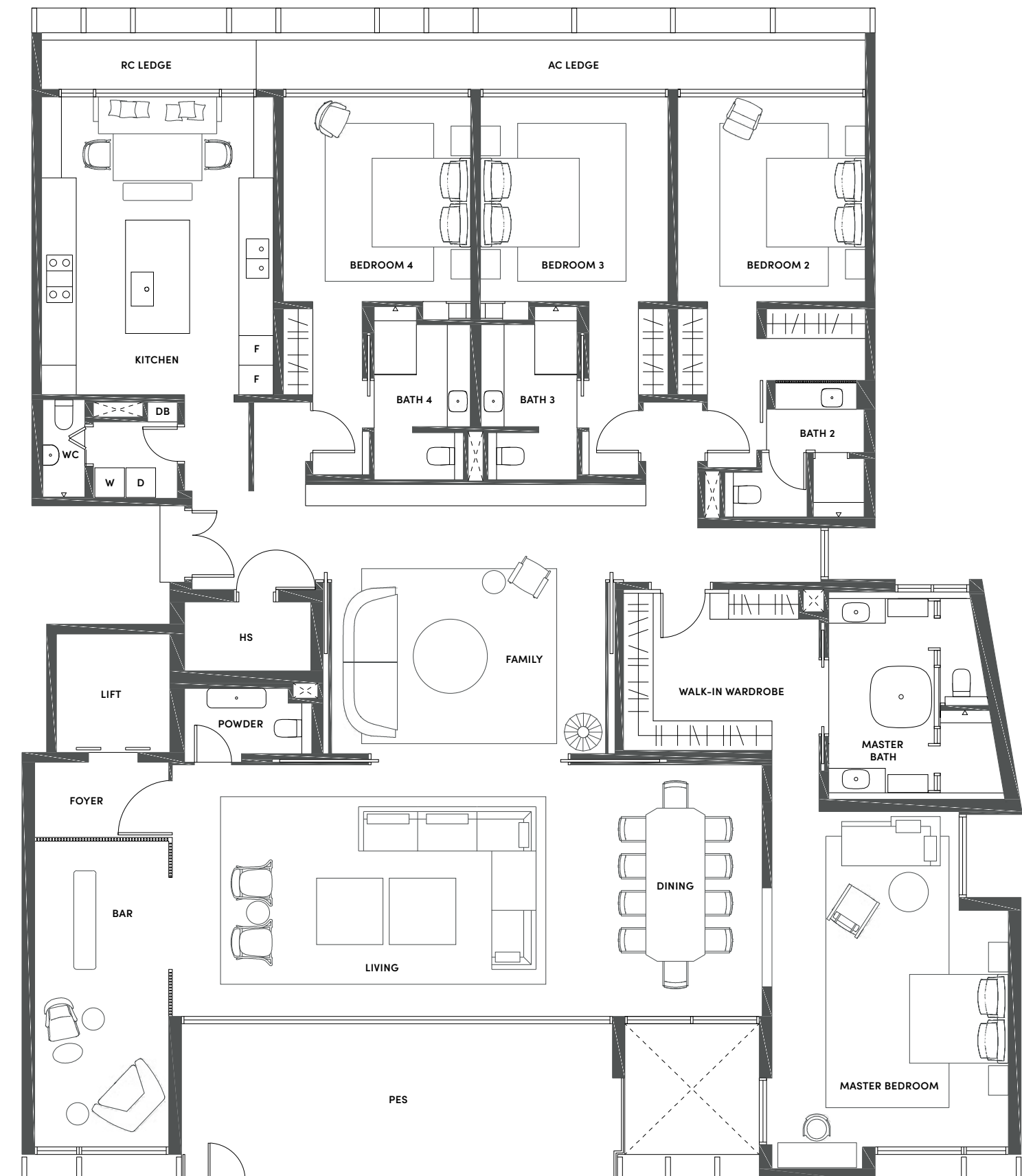
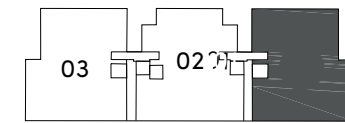


Area includes air-con (A/C) ledge, PES/Balcony and strata void area where applicable. Please refer to the key plan for orientation. The plans are subject to change as may be approved by relevant authorities. All floor plans are approximate measurements only and are subject to final re-survey. The balcony shall not be enclosed.

TYPE D1P • 4 BEDROOM

388 m² / 4,176 ft²

Units: #01-01

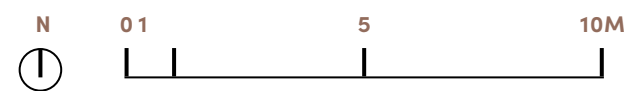
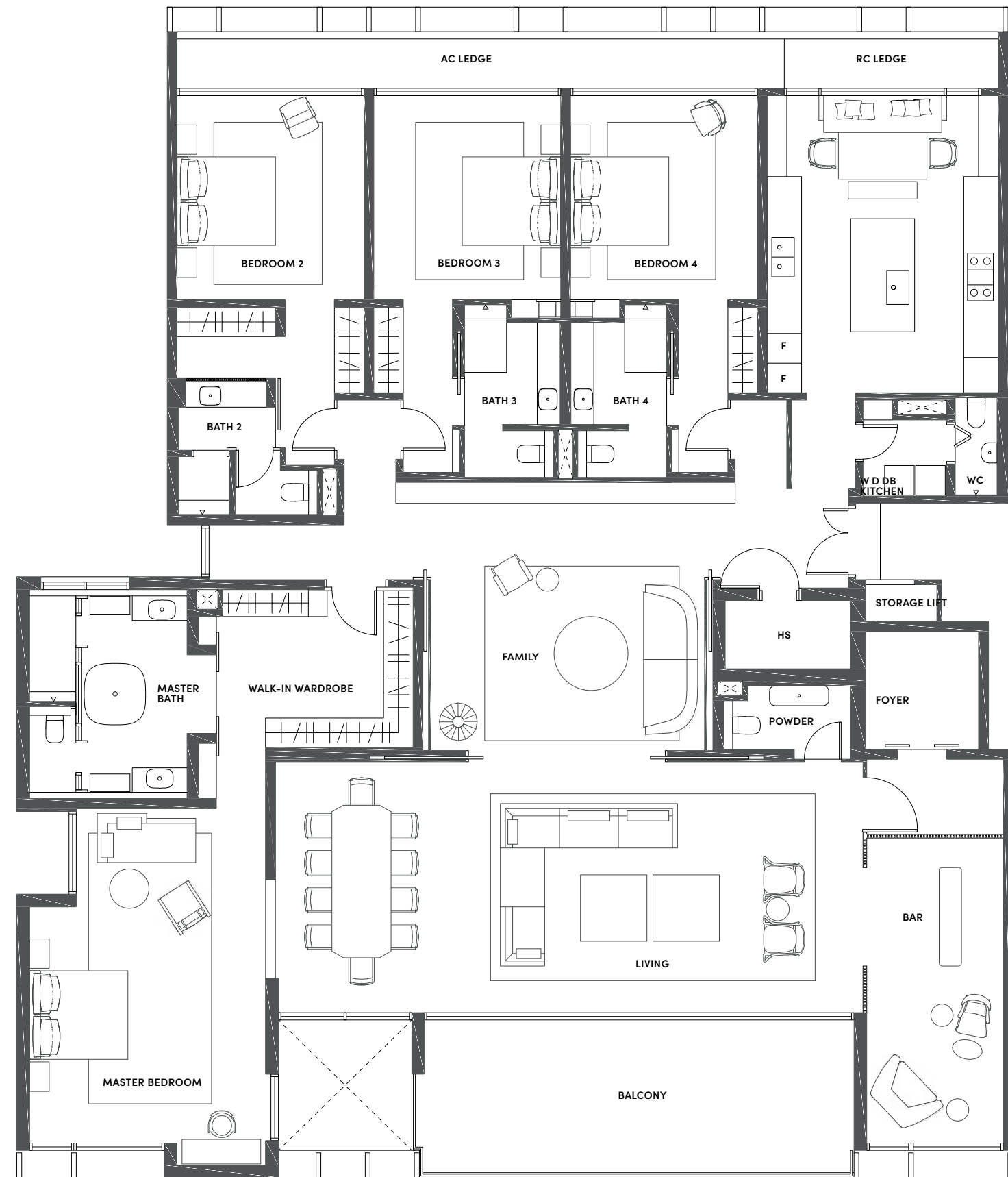
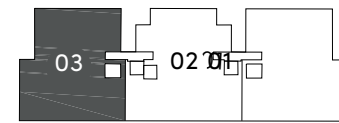


Area includes air-con (A/C) ledge, PES/Balcony and strata void area where applicable. Please refer to the key plan for orientation. The plans are subject to change as may be approved by relevant authorities. All floor plans are approximate measurements only and are subject to final re-survey. The balcony shall not be enclosed.

TYPE D1A • 4 BEDROOM 392

m² / 4,219 ft²

Units: #02-03, #03-03, #04-03, #05-03

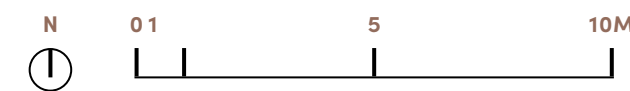
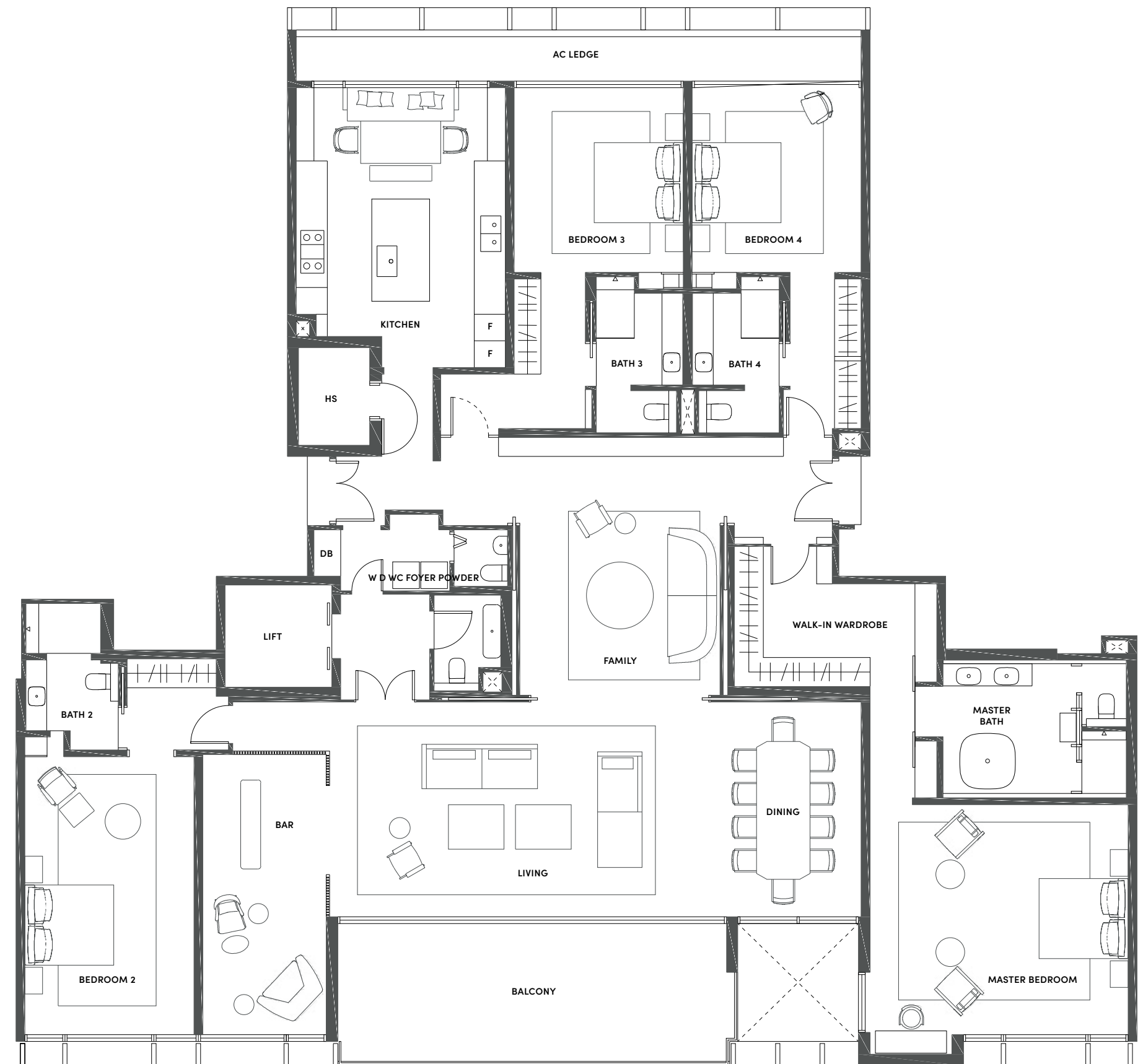
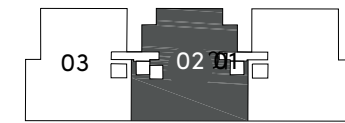


Area includes air-con (A/C) ledge, Balcony and strata void area where applicable. Please refer to the key plan for orientation. The plans are subject to change as may be approved by relevant authorities. All floor plans are approximate measurements only and are subject to final re-survey. The balcony shall not be enclosed.

TYPE D2 • 4 BEDROOM 391

m² / 4,209 ft²

Units: #02-02, #03-02, #04-02, #05-02

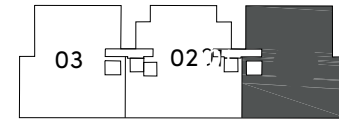


Area includes air-con (A/C) ledge, Balcony and strata void area where applicable. Please refer to the key plan for orientation. The plans are subject to change as may be approved by relevant authorities. All floor plans are approximate measurements only and are subject to final re-survey. The balcony shall not be enclosed.

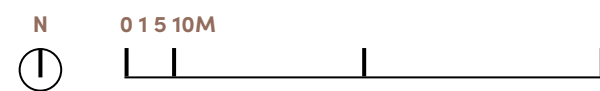
TYPE D1 • 4 BEDROOM 390

m² / 4,198 ft²

Units: #02-01, #03-01, #04-01, #05-01



A Masterful Collaboration
by Three Luminaries.



Area includes air-con (A/C) ledge, Balcony and strata void area where applicable. Please refer to the key plan for orientation. The plans are subject to change as may be approved by relevant authorities. All floor plans are approximate measurements only and are subject to final re-survey. The balcony shall not be enclosed.

ARCHITECT



Ernesto Bedmar

Ernesto Bedmar Architects is a Singapore-based architectural practice established in 2015, specialising in a wide range of architectural, conservation, landscape and interior designs.

Since its inception, it has always maintained a compact staff of multicultural personalities, designers with a singular desire to explore the relationships of buildings to nature with a particular emphasis on quality design and execution of its diversified portfolio.

The directors, Mr. Ernesto Bedmar and Mr. Iylia Zakaria, personally liaise and direct each of the company's projects. Its portfolio includes works from all over Asia and many parts of the world.

INTERIOR ARCHITECT



Koichiro Ikebuchi

Born in Osaka in 1965, Koichiro Ikebuchi moved to Singapore after obtaining his degree in architecture. With his extensive experience in interior design work, Ikebuchi started his own practice in Singapore and Osaka in 1996. His current company, Atelier Ikebuchi was set up in 2004.

Koichiro Ikebuchi has participated in a number of international design competitions and received numerous awards, including the Diamonds International Awards by De Beers, Design Award by Saporiti Italia, and President's Design Award Singapore.

Koichiro Ikebuchi has completed projects for clients across Asia, Middle East, Oceania and North America, with works ranging from luxury residences, hotels, offices and boutiques, to product design, including furniture and lighting.

LANDSCAPE ARCHITECT



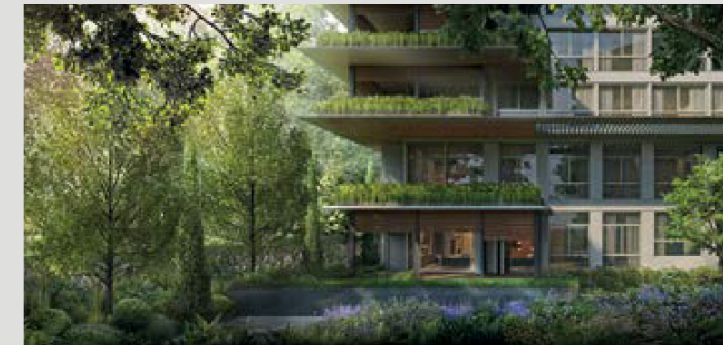
Shunmyo Masuno

Shunmyo Masuno is an 18th generation Zen priest and founder of Japan Landscape Consultants, established in 1982, renowned worldwide for designing 21st century gardens inspired by ancient Zen traditions.

His two seemingly diverse roles are inextricably linked. In Zen ascetic practice, an emotion of the mind is found that is beyond words. It is through the art of landscaping that Masuno finds an avenue for expressing his emotion and inner feelings. It is a contemplative practice that involves meditation to understand the essence of each natural element before arranging them.

Achieving a balance between Zen tradition and contemporary expression, Masuno continues to draw renewed attention to the important role of garden architecture in today's world.

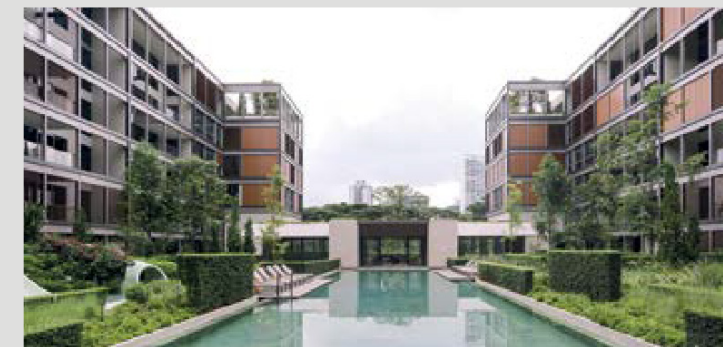
DEVELOPER



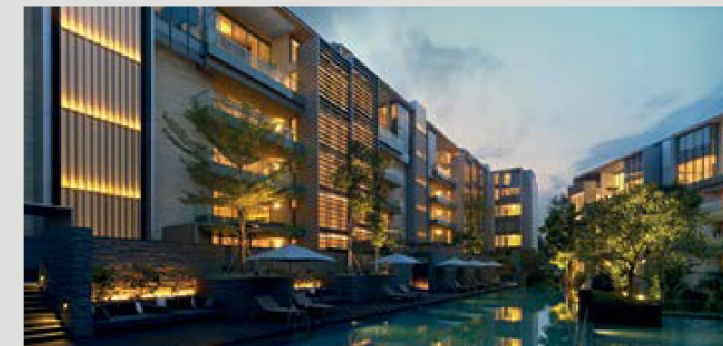
15 Holland Hill, Singapore



沁风雅苑, Shanghai



Meyer House, Singapore



Nassim Park Residences, Singapore

Incorporated in 1949, Kheng Leong Co. began operations as an international commodity and spice trading company. Over the years, the company has kept pace with the changing business landscape and has evolved as an investment group with interests in property development and real estate investment.

Today, the Kheng Leong Group has a growing portfolio of development projects and business interests, through direct investment or collaboration with strategic partners, that spans across the Asia Pacific region from Shanghai and Hong Kong to Sydney as well as London and Los Angeles.

The Group has chalked up a proven track record in developing refined residences and built up a brand voice that connotes quality and value.

A forerunner in the development of refined cluster houses in Singapore, the Group has built up a portfolio that includes both residential developments and retail projects in choice locations and prime districts.

DEVELOPED BY



KHENG LEONG CO.

DESIGNER ARCHITECT

Ernesto Bedmar Architects

PROJECT ARCHITECT

P & T Consultants Pte Ltd

BRANDING & ART DIRECTION

&Larry

DEVELOPER'S SALES TEAM

Huttons Asia Pte Ltd

Huttons
SINGAPORE'S LARGEST
PRIVATE REAL ESTATE AGENCY

DISCLAIMER

While every reasonable care has been taken in preparing this brochure and in constructing the models and showflats, the developer and the marketing agents cannot be held responsible for any inaccuracies or omissions. Visual representations, models, showflat displays and illustrations, photographs, art renderings and other graphic representations and references are intended to portray only artistic impressions of the development and cannot be regarded as representation of fact. The property is subject to inspection by the relevant authorities to comply with the current codes of practice. All information, specifications, renderings, visual representations and plans are current at the time of publication and are subject to change as may be required by us and/or the competent authorities and shall not be regarded as statements or representations of facts. All plans are subject to amendments as directed and/or approved by the building authorities. All areas are approximate measurements only and subject to the final survey. The Sales and Purchase Agreement shall form the entire agreement between us, the Developer and the Purchaser and shall supersede all statements, representations or promises made prior to the signing of the Sale and Purchase Agreement and shall in no way be modified by any statements, representations or promises made by us or the Marketing Agent.

PROJECT INFORMATION

Developer: Peak Vista Pte Ltd (Co.
Registration No. 201923383Z)
Tenure: Freehold Expected Date of Vacant
Possession: 1 March 2028
Expected Date of Legal Completion: 1 March 2031
Encumbrance: Mortgage registered in favour of United Overseas Bank
Lot No.: 99446W & 99447V TS28
Developer's License No.: C1481 A1805-00005-2022-BP01
approved on 15 February 2024

