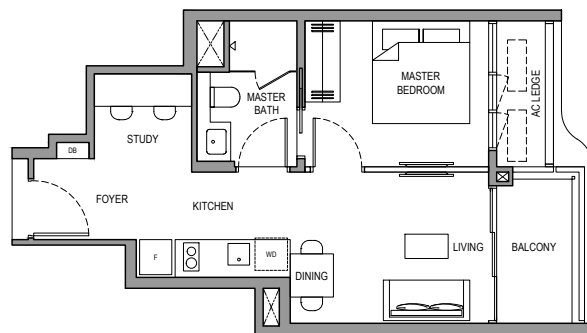
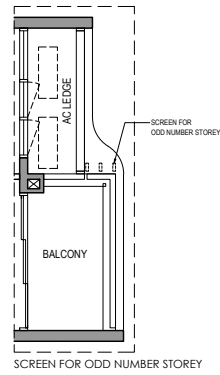


1 BEDROOM + STUDY

TYPE 1BR + S(A)

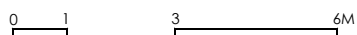
45 SQM/ 484 SQFT
(INCLUSIVE OF 5 SQM BALCONY)

BLOCK 1 #05-04 to #31-04

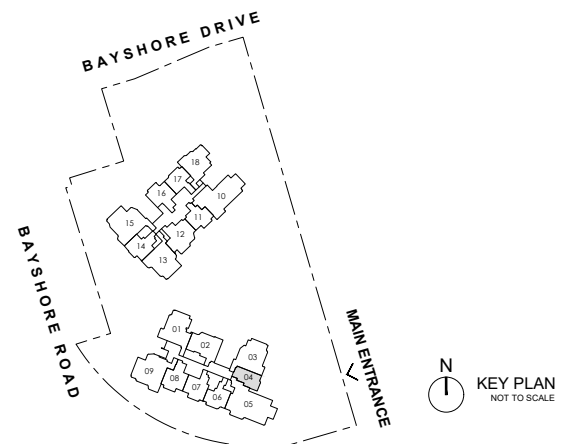


LEGEND:

- F FRIDGE
- WD WASHER CUM DRYER
- DB DISTRIBUTION BOARD
- AC AIR-CONDITIONER (EXCLUDED FROM STRATA AREA)
- RC REINFORCED CONCRETE (EXCLUDED FROM STRATA AREA)
- ☒ VOID SPACE (EXCLUDED FROM STRATA AREA)
- ☒ RAINWATER DOWNPIPE FOR BALCONY (EXCLUDED FROM STRATA AREA)
- WALLS NOT ALLOWED TO BE HACKED / ALTERED / DRILLED



ALL PLANS ARE SUBJECT TO CHANGES BY THE RELEVANT AUTHORITIES.
MEASUREMENTS ARE APPROXIMATE ONLY AND SUBJECT TO FINAL SURVEY.
INFORMATION ACCURATE AT POINT OF PRINTING.
BP NO.: A1716-00045-2025-BP01 DATED 09-FEB-2026

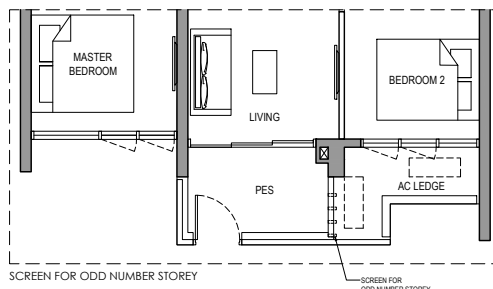


2 BEDROOM

TYPE 2BR (A) PES

55 SQM/ 592 SQFT
(INCLUSIVE OF 5 SQM PES)

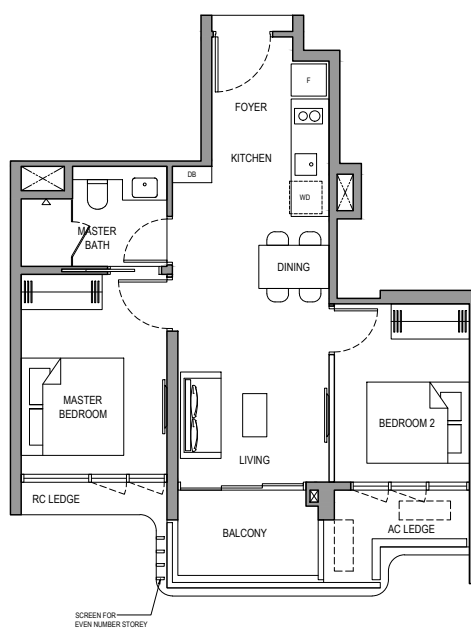
BLOCK 3 #01-11



TYPE 2BR (A)

55 SQM/ 592 SQFT
(INCLUSIVE OF 5 SQM BALCONY)

BLOCK 3 #02-11 to #30-11

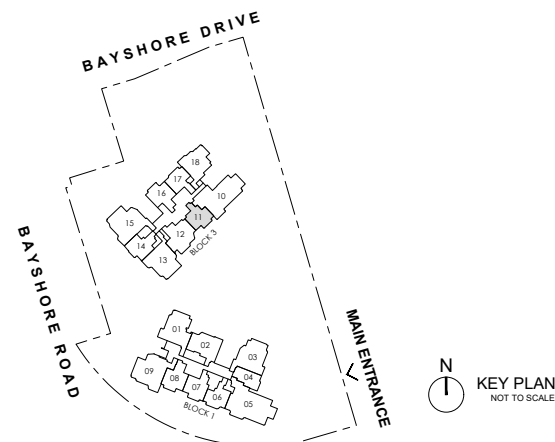


LEGEND:

- F FRIDGE
- WD WASHER CUM DRYER
- DB DISTRIBUTION BOARD
- AC AIR-CONDITIONER (EXCLUDED FROM STRATA AREA)
- RC REINFORCED CONCRETE (EXCLUDED FROM STRATA AREA)
- ☒ VOID SPACE (EXCLUDED FROM STRATA AREA)
- ☒ RAINWATER DOWNPIPE FOR BALCONY (EXCLUDED FROM STRATA AREA)
- WALLS NOT ALLOWED TO BE HACKED / ALTERED / DRILLED

0 1 3 6M

ALL PLANS ARE SUBJECT TO CHANGES BY THE RELEVANT AUTHORITIES.
MEASUREMENTS ARE APPROXIMATE ONLY AND SUBJECT TO FINAL SURVEY.
INFORMATION ACCURATE AT POINT OF PRINTING.
BP NO.: A1716-00045-2025-BP01 DATED 09-FEB-2026

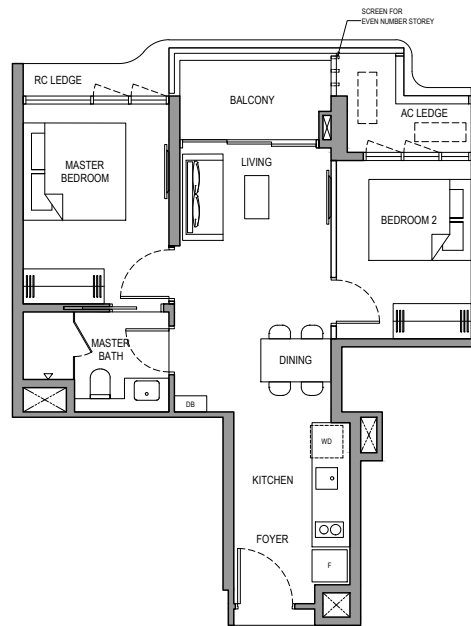
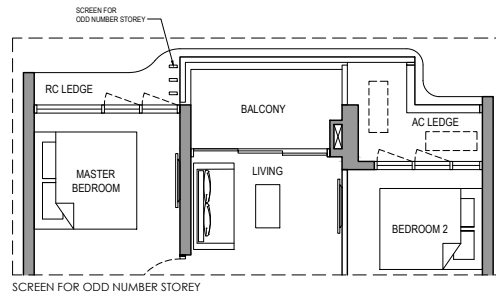


2 BEDROOM

TYPE 2BR (B)

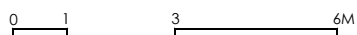
55 SQM/ 592 SQFT
(INCLUSIVE OF 5 SQM BALCONY)

BLOCK 3 #03-17 to #30-17

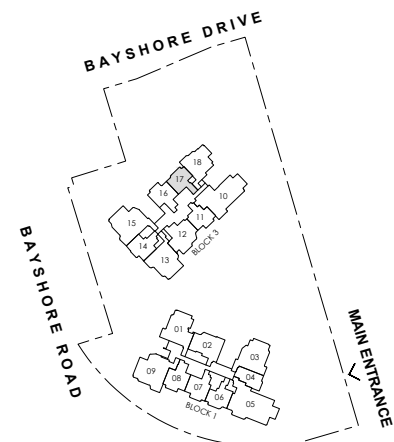


LEGEND:

- F FRIDGE
- WD WASHER CUM DRYER
- DB DISTRIBUTION BOARD
- AC AIR-CONDITIONER (EXCLUDED FROM STRATA AREA)
- RC REINFORCED CONCRETE (EXCLUDED FROM STRATA AREA)
- ☒ VOID SPACE (EXCLUDED FROM STRATA AREA)
- ☒ RAINWATER DOWNPIPE FOR BALCONY (EXCLUDED FROM STRATA AREA)
- WALLS NOT ALLOWED TO BE HACKED / ALTERED / DRILLED



ALL PLANS ARE SUBJECT TO CHANGES BY THE RELEVANT AUTHORITIES.
MEASUREMENTS ARE APPROXIMATE ONLY AND SUBJECT TO FINAL SURVEY.
INFORMATION ACCURATE AT POINT OF PRINTING.
BP NO.: A1716-00045-2025-BP01 DATED 09-FEB-2026



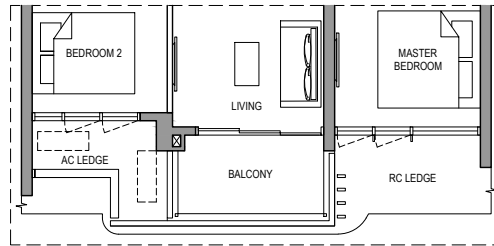
N
KEY PLAN
NOT TO SCALE

2 BEDROOM

TYPE 2BR (C)

55 SQM/ 592 SQFT
(INCLUSIVE OF 5 SQM BALCONY)

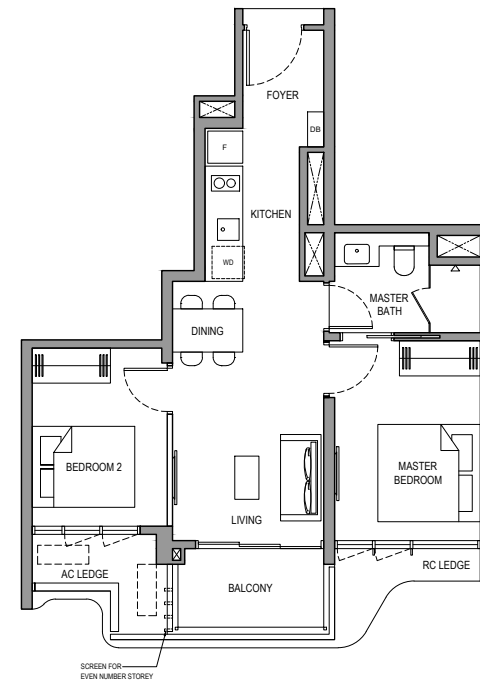
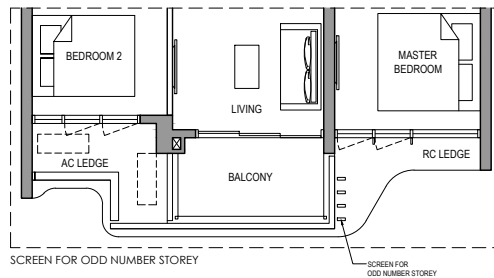
BLOCK 1 #05-06



TYPE 2BR (C)

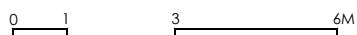
55 SQM/ 592 SQFT
(INCLUSIVE OF 5 SQM BALCONY)

BLOCK 1 #06-06 to #30-06

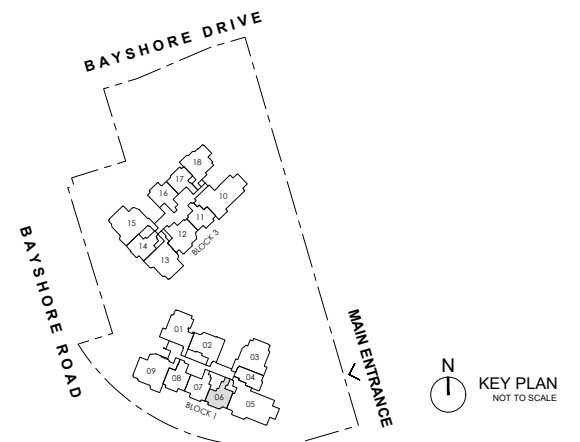


LEGEND:

- F FRIDGE
- WD WASHER CUM DRYER
- DB DISTRIBUTION BOARD
- AC AIR-CONDITIONER (EXCLUDED FROM STRATA AREA)
- RC REINFORCED CONCRETE (EXCLUDED FROM STRATA AREA)
- ☒ VOID SPACE (EXCLUDED FROM STRATA AREA)
- ☒ RAINWATER DOWNPIPE FOR BALCONY (EXCLUDED FROM STRATA AREA)
- WALLS NOT ALLOWED TO BE HACKED / ALTERED / DRILLED



ALL PLANS ARE SUBJECT TO CHANGES BY THE RELEVANT AUTHORITIES.
MEASUREMENTS ARE APPROXIMATE ONLY AND SUBJECT TO FINAL SURVEY.
INFORMATION ACCURATE AT POINT OF PRINTING.
BP NO.: A1716-00045-2025-BP01 DATED 09-FEB-2026

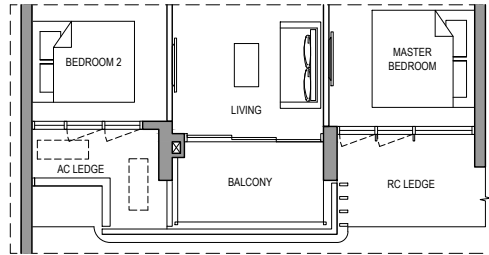


2 BEDROOM PREMIUM

TYPE 2BR P(A)

64 SQM/ 689 SQFT
(INCLUSIVE OF 5 SQM BALCONY)

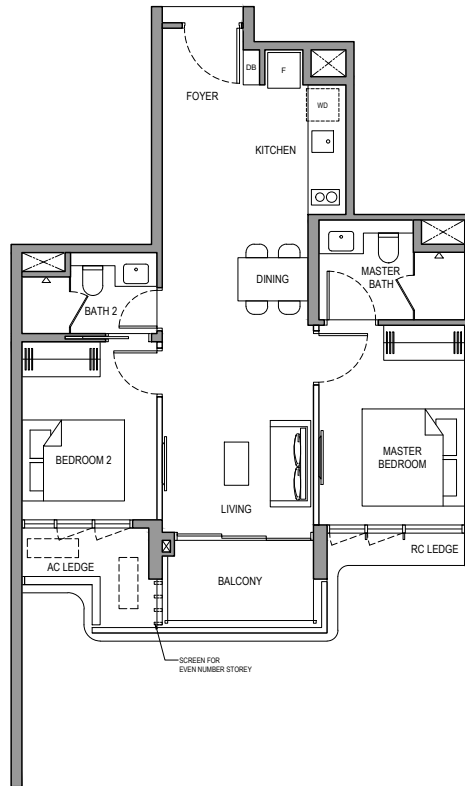
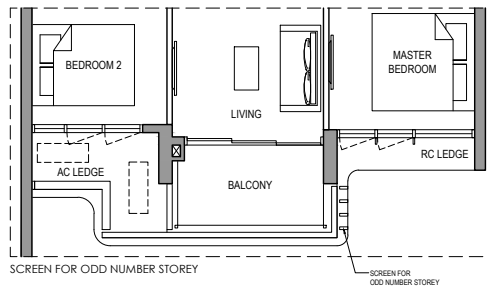
BLOCK 1 #05-08



TYPE 2BR P(A)

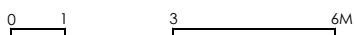
64 SQM/ 689 SQFT
(INCLUSIVE OF 5 SQM BALCONY)

BLOCK 1 #06-08 to #31-08

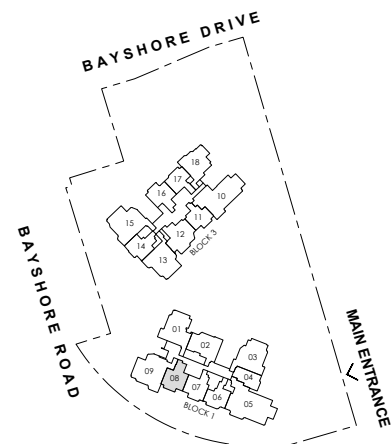


LEGEND:

- F FRIDGE
- WD WASHER CUM DRYER
- DB DISTRIBUTION BOARD
- AC AIR-CONDITIONER (EXCLUDED FROM STRATA AREA)
- RC REINFORCED CONCRETE (EXCLUDED FROM STRATA AREA)
- ☐ VOID SPACE (EXCLUDED FROM STRATA AREA)
- ☒ RAINWATER DOWNPIPE FOR BALCONY (EXCLUDED FROM STRATA AREA)
- WALLS NOT ALLOWED TO BE HACKED / ALTERED / DRILLED



ALL PLANS ARE SUBJECT TO CHANGES BY THE RELEVANT AUTHORITIES.
MEASUREMENTS ARE APPROXIMATE ONLY AND SUBJECT TO FINAL SURVEY.
INFORMATION ACCURATE AT POINT OF PRINTING.
BP NO.: A1716-00045-2025-BP01 DATED 09-FEB-2026



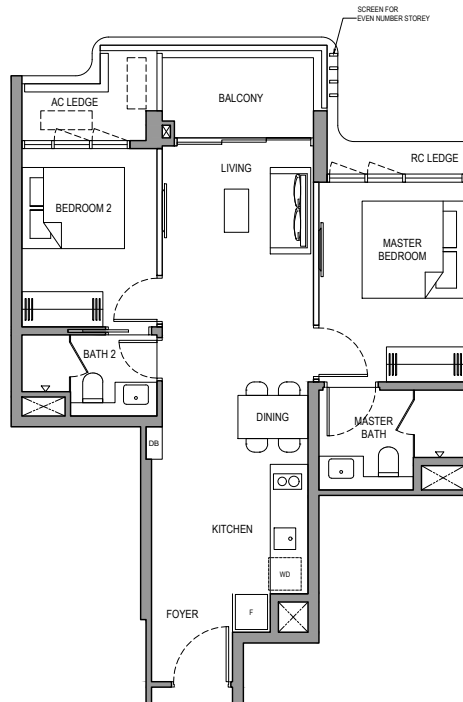
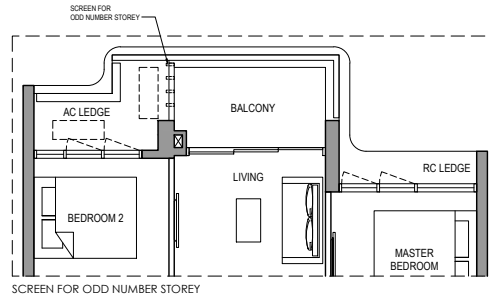
N
KEY PLAN
NOT TO SCALE

2 BEDROOM PREMIUM

TYPE 2BR P(B)

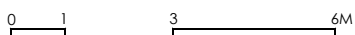
64 SQM/ 689 SQFT
(INCLUSIVE OF 5 SQM BALCONY)

BLOCK 3 #03-16 to #30-16

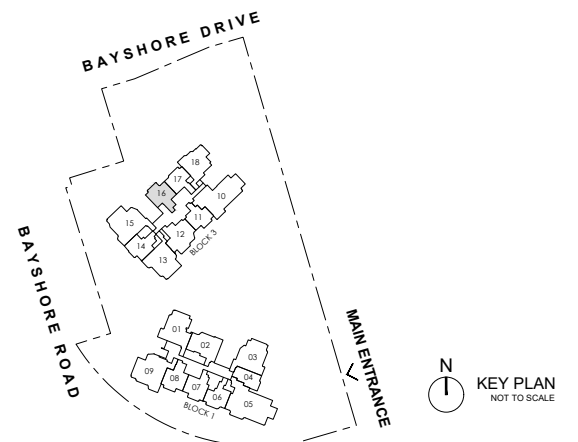


LEGEND:

- F FRIDGE
- WD WASHER CUM DRYER
- DB DISTRIBUTION BOARD
- AC AIR-CONDITIONER (EXCLUDED FROM STRATA AREA)
- RC REINFORCED CONCRETE (EXCLUDED FROM STRATA AREA)
- ☒ VOID SPACE (EXCLUDED FROM STRATA AREA)
- ☒ RAINWATER DOWNPIPE FOR BALCONY (EXCLUDED FROM STRATA AREA)
- WALLS NOT ALLOWED TO BE HACKED / ALTERED / DRILLED



ALL PLANS ARE SUBJECT TO CHANGES BY THE RELEVANT AUTHORITIES.
MEASUREMENTS ARE APPROXIMATE ONLY AND SUBJECT TO FINAL SURVEY.
INFORMATION ACCURATE AT POINT OF PRINTING.
BP NO.: A1716-00045-2025-BP01 DATED 09-FEB-2026

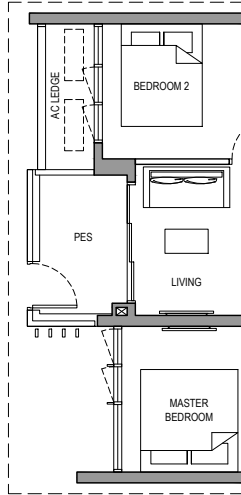


2 BEDROOM PREMIUM

TYPE 2BR P(C) PES

63 SQM/ 678 SQFT
(INCLUSIVE OF 5 SQM PES)

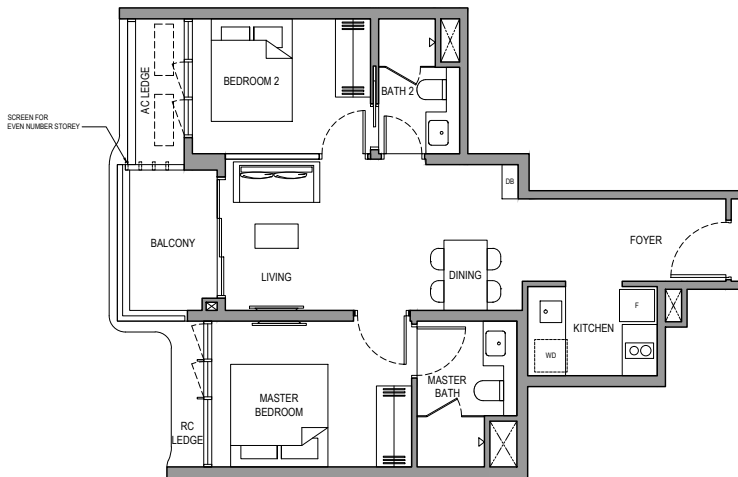
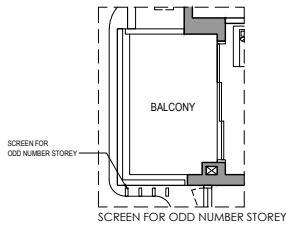
BLOCK 3 #01-14



TYPE 2BR P(C)

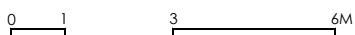
63 SQM/ 678 SQFT
(INCLUSIVE OF 5 SQM BALCONY)

BLOCK 3 #02-14 to #31-14

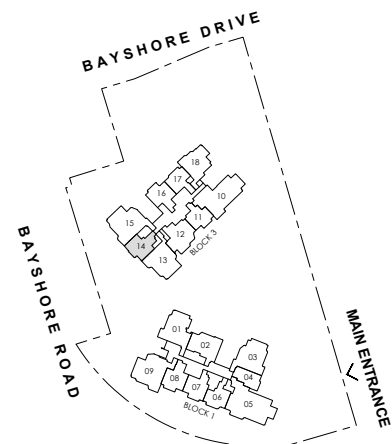


LEGEND:

- F FRIDGE
- WD WASHER CUM DRYER
- DB DISTRIBUTION BOARD
- AC AIR-CONDITIONER (EXCLUDED FROM STRATA AREA)
- RC REINFORCED CONCRETE (EXCLUDED FROM STRATA AREA)
- ☒ VOID SPACE (EXCLUDED FROM STRATA AREA)
- ☒ RAINWATER DOWNPIPE FOR BALCONY (EXCLUDED FROM STRATA AREA)
- WALLS NOT ALLOWED TO BE HACKED / ALTERED / DRILLED



ALL PLANS ARE SUBJECT TO CHANGES BY THE RELEVANT AUTHORITIES.
MEASUREMENTS ARE APPROXIMATE ONLY AND SUBJECT TO FINAL SURVEY.
INFORMATION ACCURATE AT POINT OF PRINTING.
BP NO.: A1716-00045-2025-BP01 DATED 09-FEB-2026



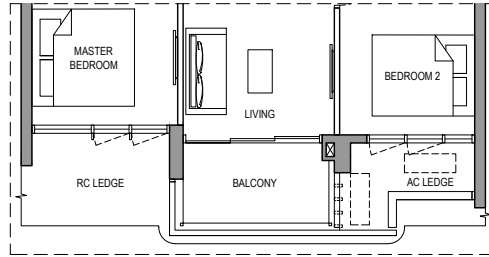
N
KEY PLAN
NOT TO SCALE

2 BEDROOM PREMIUM

TYPE 2BR P(D)

63 SQM/ 678 SQFT
(INCLUSIVE OF 5 SQM BALCONY)

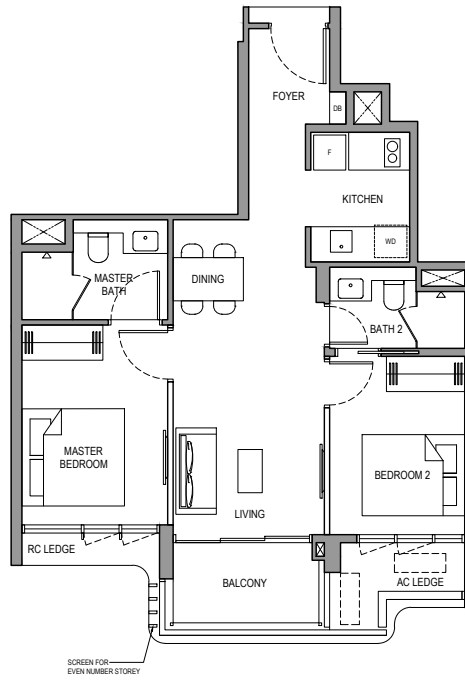
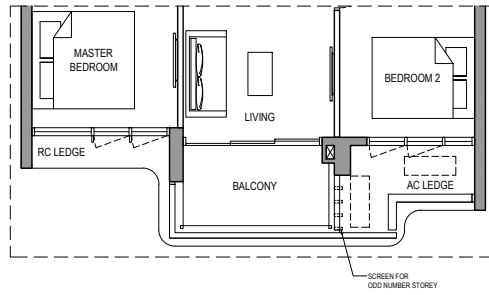
BLOCK 1 #05-07



TYPE 2BR P(D)

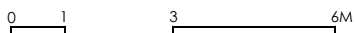
63 SQM/ 678 SQFT
(INCLUSIVE OF 5 SQM BALCONY)

BLOCK 1 #06-07 to #31-07

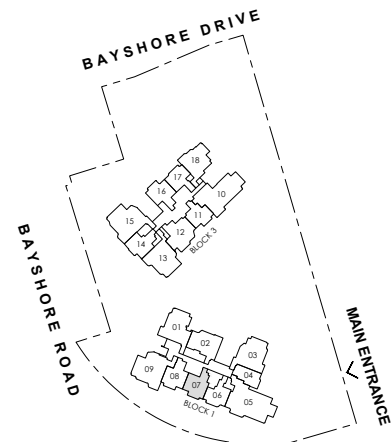


LEGEND:

- F FRIDGE
- WD WASHER CUM DRYER
- DB DISTRIBUTION BOARD
- AC AIR-CONDITIONER (EXCLUDED FROM STRATA AREA)
- RC REINFORCED CONCRETE (EXCLUDED FROM STRATA AREA)
- VOID SPACE (EXCLUDED FROM STRATA AREA)
- X RAINWATER DOWNPIPE FOR BALCONY (EXCLUDED FROM STRATA AREA)
- WALLS NOT ALLOWED TO BE HACKED / ALTERED / DRILLED



ALL PLANS ARE SUBJECT TO CHANGES BY THE RELEVANT AUTHORITIES.
MEASUREMENTS ARE APPROXIMATE ONLY AND SUBJECT TO FINAL SURVEY.
INFORMATION ACCURATE AT POINT OF PRINTING.
BP NO.: A1716-00045-2025-BP01 DATED 09-FEB-2026

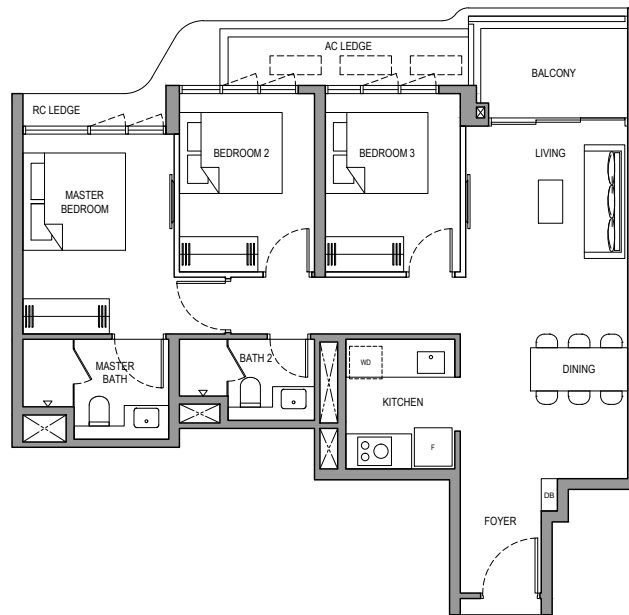
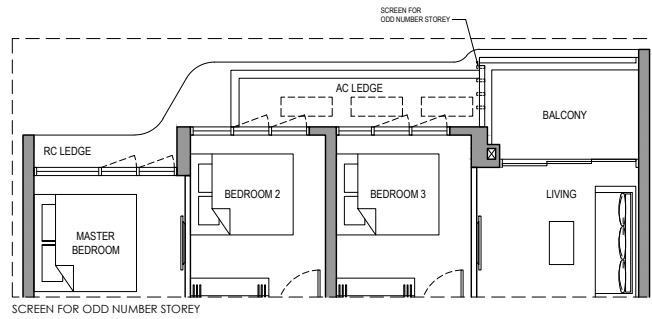


3 BEDROOM

TYPE 3BR (A)

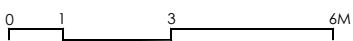
82 SQM/ 883 SQFT
(INCLUSIVE OF 6 SQM BALCONY)

BLOCK 1 #05-02 to #30-02

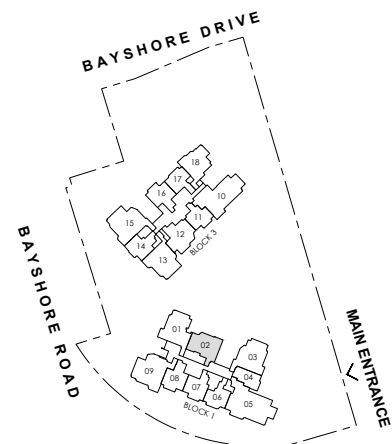


LEGEND:

- F FRIDGE
- WD WASHER CUM DRYER
- DB DISTRIBUTION BOARD
- AC AIR-CONDITIONER (EXCLUDED FROM STRATA AREA)
- RC REINFORCED CONCRETE (EXCLUDED FROM STRATA AREA)
- ☒ VOID SPACE (EXCLUDED FROM STRATA AREA)
- ☒ RAINWATER DOWNPIPE FOR BALCONY (EXCLUDED FROM STRATA AREA)
- WALLS NOT ALLOWED TO BE HACKED / ALTERED / DRILLED



ALL PLANS ARE SUBJECT TO CHANGES BY THE RELEVANT AUTHORITIES.
MEASUREMENTS ARE APPROXIMATE ONLY AND SUBJECT TO FINAL SURVEY.
INFORMATION ACCURATE AT POINT OF PRINTING.
BP NO.: A1716-00045-2025-BP01 DATED 09-FEB-2026



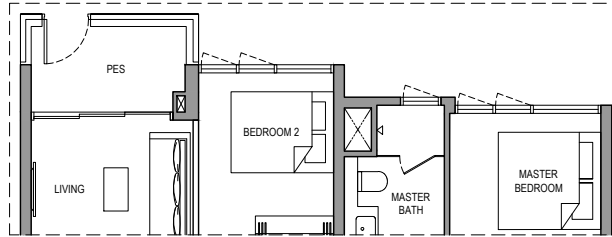
N
KEY PLAN
NOT TO SCALE

3 BEDROOM

TYPE 3BR (B) PES

83 SQM/ 893 SQFT
(INCLUSIVE OF 6 SQM PES)

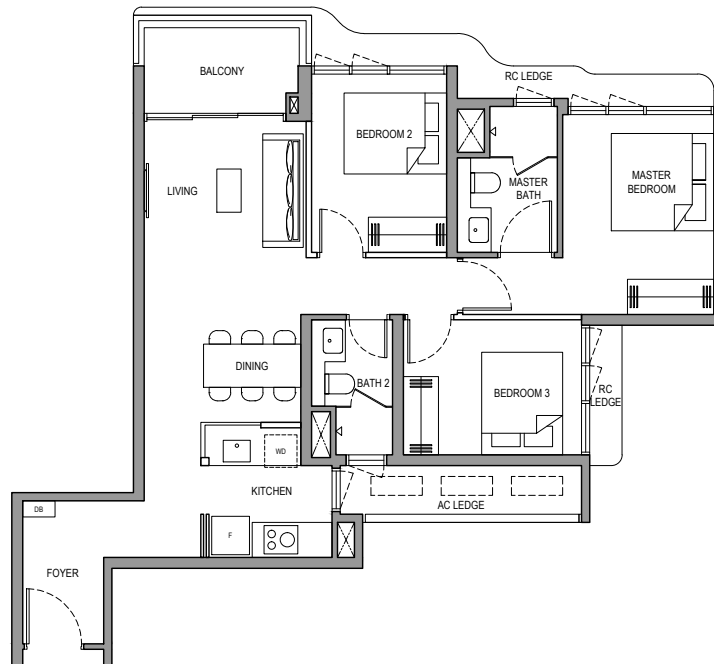
BLOCK 3 #01-18



TYPE 3BR (B)

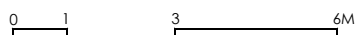
83 SQM/ 893 SQFT
(INCLUSIVE OF 6 SQM BALCONY)

BLOCK 3 #02-18 to #30-18

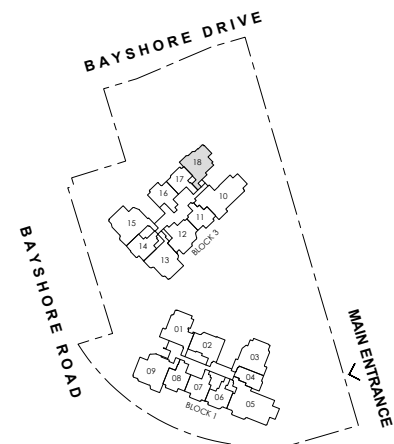


LEGEND:

- F FRIDGE
- WD WASHER CUM DRYER
- DB DISTRIBUTION BOARD
- AC AIR-CONDITIONER (EXCLUDED FROM STRATA AREA)
- RC REINFORCED CONCRETE (EXCLUDED FROM STRATA AREA)
- ☒ VOID SPACE (EXCLUDED FROM STRATA AREA)
- ☒ RAINWATER DOWNPIPE FOR BALCONY (EXCLUDED FROM STRATA AREA)
- WALLS NOT ALLOWED TO BE HACKED / ALTERED / DRILLED



ALL PLANS ARE SUBJECT TO CHANGES BY THE RELEVANT AUTHORITIES.
MEASUREMENTS ARE APPROXIMATE ONLY AND SUBJECT TO FINAL SURVEY.
INFORMATION ACCURATE AT POINT OF PRINTING.
BP NO.: A1716-00045-2025-BP01 DATED 09-FEB-2026



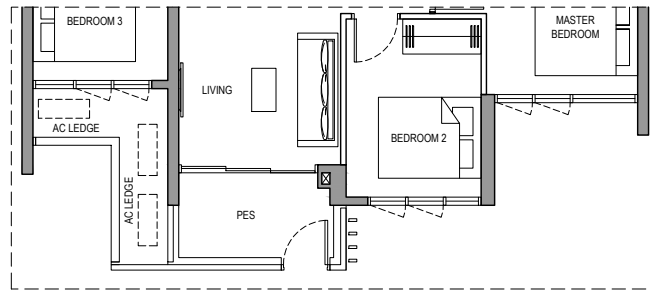
N
KEY PLAN
NOT TO SCALE

3 BEDROOM

TYPE 3BR (C) PES

82 SQM/ 883 SQFT
(INCLUSIVE OF 6 SQM PES)

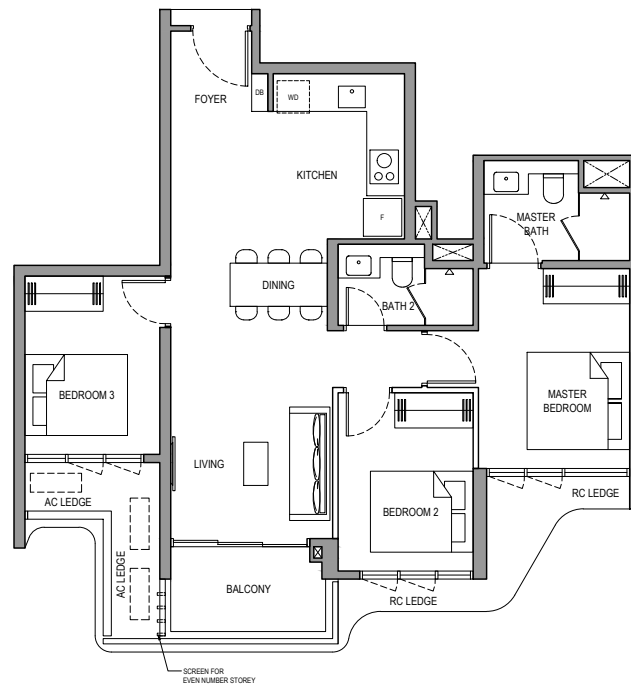
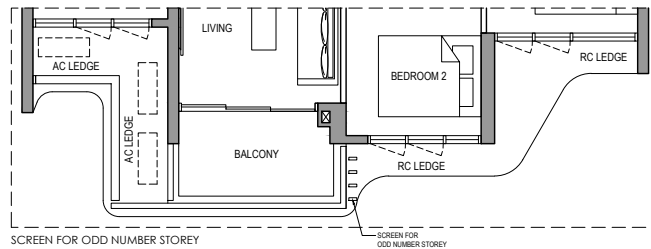
BLOCK 3 #01-12



TYPE 3BR (C)

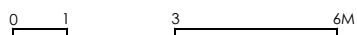
82 SQM/ 883 SQFT
(INCLUSIVE OF 6 SQM BALCONY)

BLOCK 3 #02-12 to #31-12

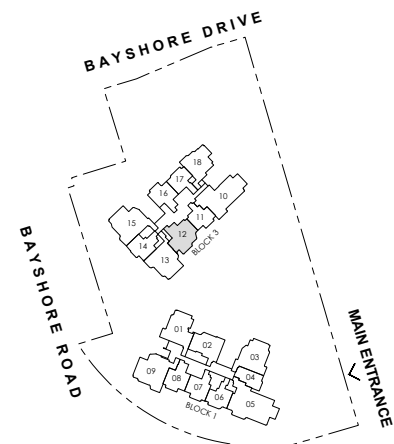


LEGEND:

- F FRIDGE
- WD WASHER CUM DRYER
- DB DISTRIBUTION BOARD
- AC AIR-CONDITIONER (EXCLUDED FROM STRATA AREA)
- RC REINFORCED CONCRETE (EXCLUDED FROM STRATA AREA)
- ☒ VOID SPACE (EXCLUDED FROM STRATA AREA).
- ☒ RAINWATER DOWNPIPE FOR BALCONY (EXCLUDED FROM STRATA AREA)
- WALLS NOT ALLOWED TO BE HACKED / ALTERED / DRILLED



ALL PLANS ARE SUBJECT TO CHANGES BY THE RELEVANT AUTHORITIES.
MEASUREMENTS ARE APPROXIMATE ONLY AND SUBJECT TO FINAL SURVEY.
INFORMATION ACCURATE AT POINT OF PRINTING.
BP NO.: A1716-00045-2025-BP01 DATED 09-FEB-2026



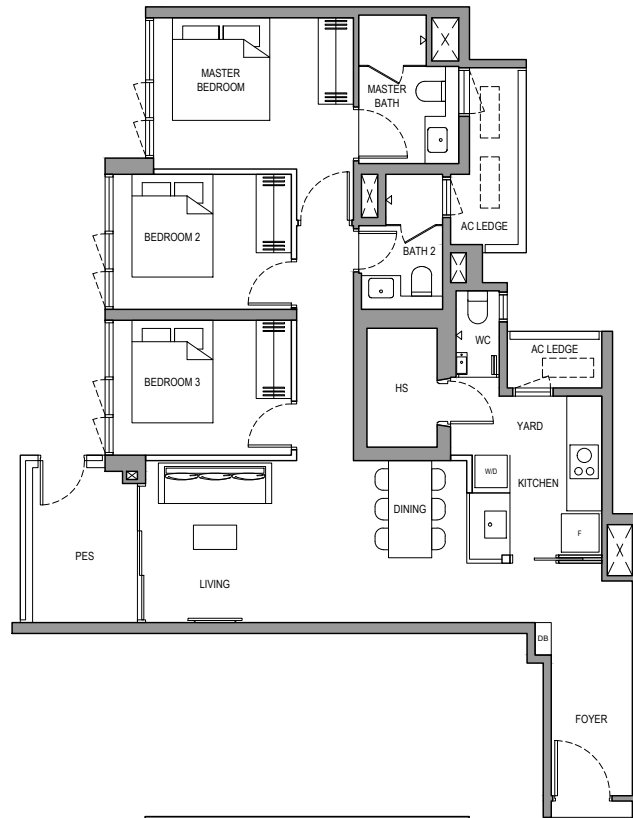
N
KEY PLAN
NOT TO SCALE

3 BEDROOM PREMIUM

TYPE 3BR P(A) PES

96 SQM/ 1,033 SQFT
(INCLUSIVE OF 7 SQM PES)

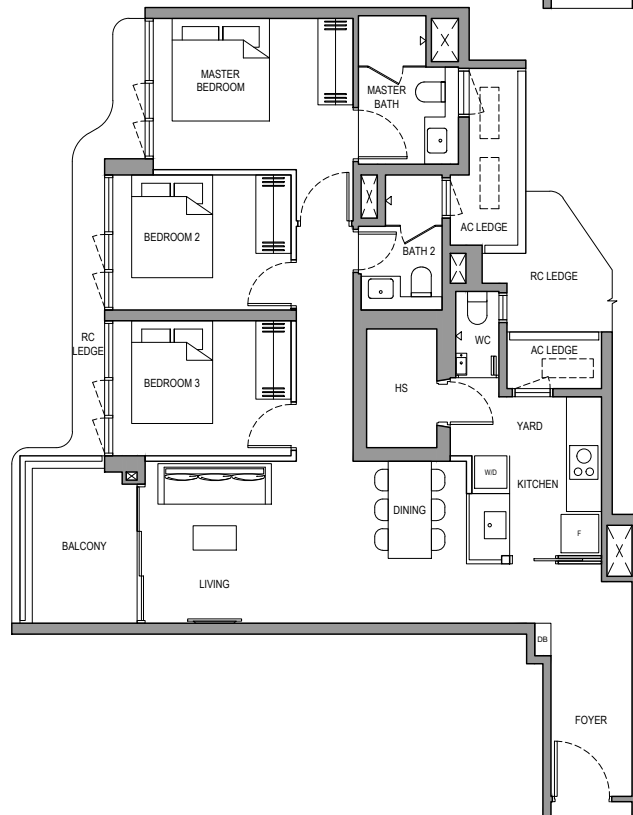
BLOCK 1 #01-01



TYPE 3BR P(A)

96 SQM/ 1,033 SQFT
(INCLUSIVE OF 7 SQM BALCONY)

BLOCK 1 #02-01 to #30-01

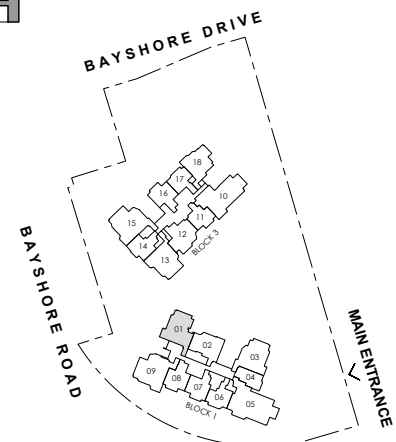


LEGEND:

- F FRIDGE
- W/D WASHER AND DRYER
- DB DISTRIBUTION BOARD
- WC WATER CLOSET
- HS HOUSEHOLD SHELTER
- AC AIR-CONDITIONER (EXCLUDED FROM STRATA AREA)
- RC REINFORCED CONCRETE (EXCLUDED FROM STRATA AREA)
- ☒ VOID SPACE (EXCLUDED FROM STRATA AREA)
- ☒ RAINWATER DOWNPIPE FOR BALCONY (EXCLUDED FROM STRATA AREA)
- WALLS NOT ALLOWED TO BE HACKED / ALTERED / DRILLED

0 1 3 6M

ALL PLANS ARE SUBJECT TO CHANGES BY THE RELEVANT AUTHORITIES.
MEASUREMENTS ARE APPROXIMATE ONLY AND SUBJECT TO FINAL SURVEY.
INFORMATION ACCURATE AT POINT OF PRINTING.
BP NO.: A1716-00045-2025-BP01 DATED 09-FEB-2026



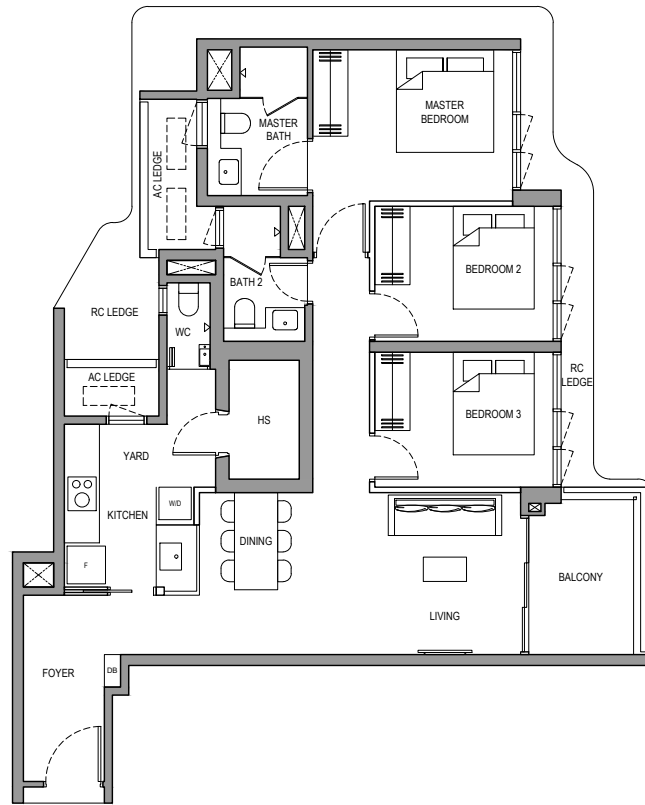
N
KEY PLAN
NOT TO SCALE

3 BEDROOM PREMIUM

TYPE 3BR P(B)

96 SQM/ 1,033 SQFT
(INCLUSIVE OF 7 SQM BALCONY)

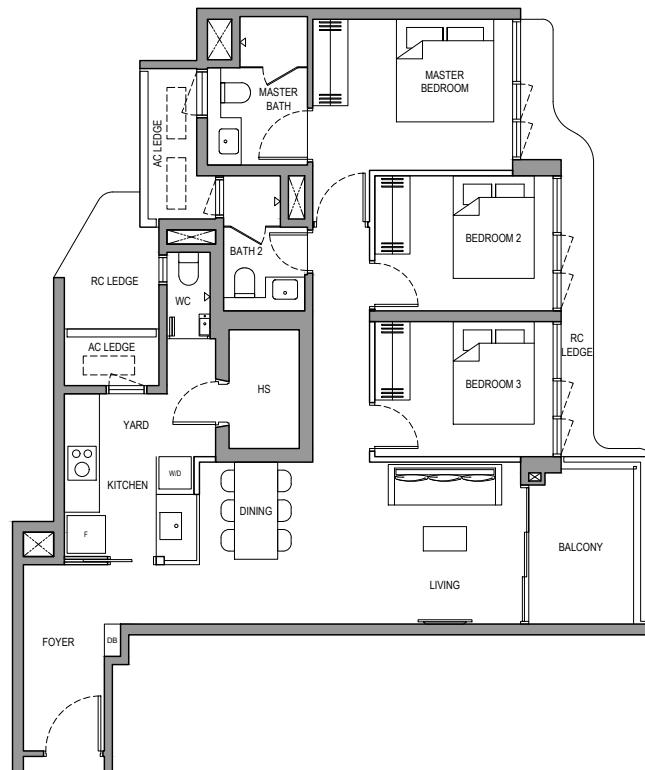
BLOCK 1 #05-03



TYPE 3BR P(B)

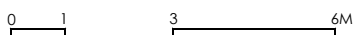
96 SQM/ 1,033 SQFT
(INCLUSIVE OF 7 SQM BALCONY)

BLOCK 1 #06-03 to #31-03

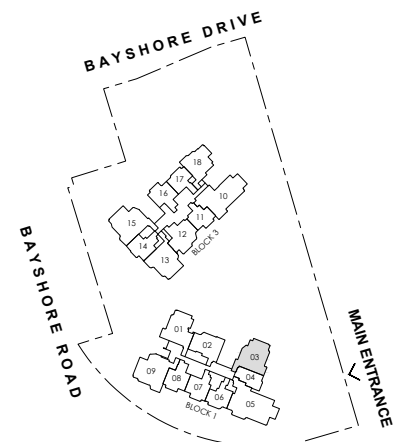


LEGEND:

- F FRIDGE
- W/D WASHER AND DRYER
- DB DISTRIBUTION BOARD
- WC WATER CLOSET
- HS HOUSEHOLD SHELTER
- AC AIR-CONDITIONER (EXCLUDED FROM STRATA AREA)
- RC REINFORCED CONCRETE (EXCLUDED FROM STRATA AREA)
- ☒ VOID SPACE (EXCLUDED FROM STRATA AREA)
- ☒ RAINWATER DOWNPIPE FOR BALCONY (EXCLUDED FROM STRATA AREA)
- ▬ WALLS NOT ALLOWED TO BE HACKED / ALTERED / DRILLED



ALL PLANS ARE SUBJECT TO CHANGES BY THE RELEVANT AUTHORITIES.
MEASUREMENTS ARE APPROXIMATE ONLY AND SUBJECT TO FINAL SURVEY.
INFORMATION ACCURATE AT POINT OF PRINTING.
BP NO.: A1716-00045-2025-BP01 DATED 09-FEB-2026



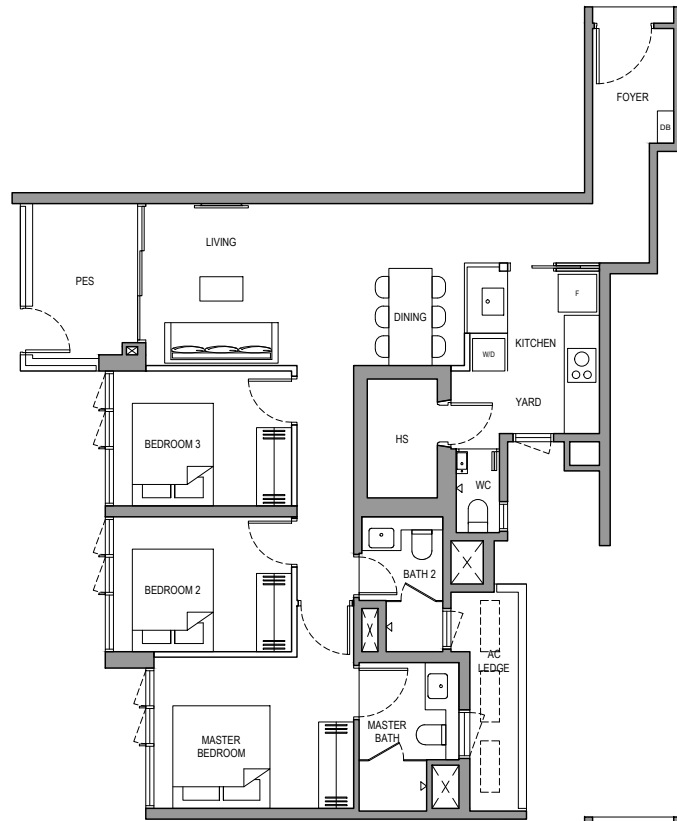
N
KEY PLAN
NOT TO SCALE

3 BEDROOM PREMIUM

TYPE 3BR P(C) PES

96 SQM/ 1,033 SQFT
(INCLUSIVE OF 7 SQM PES)

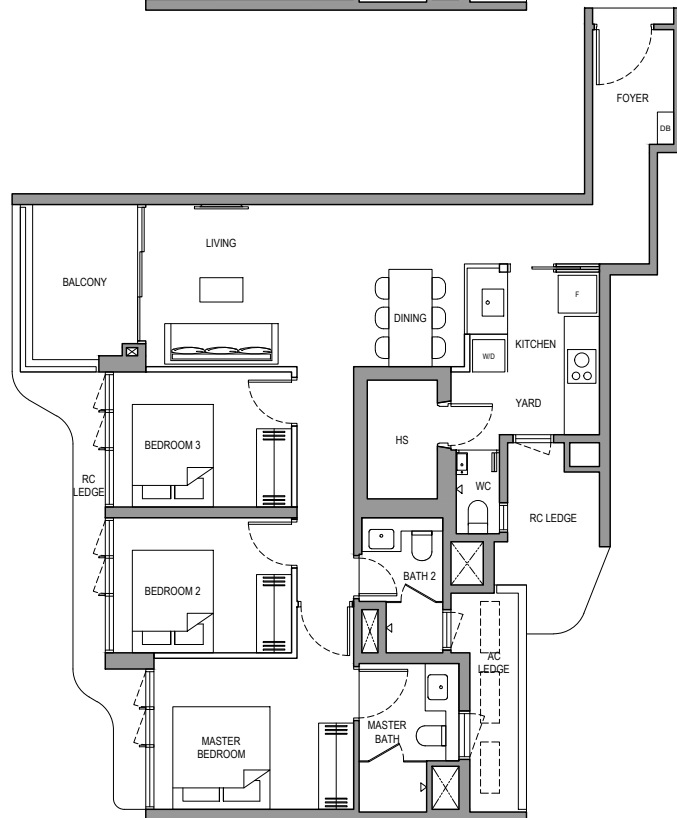
BLOCK 3 #01-13



TYPE 3BR P(C)

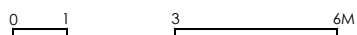
96 SQM/ 1,033 SQFT
(INCLUSIVE OF 7 SQM BALCONY)

BLOCK 3 #02-13 to #31-13

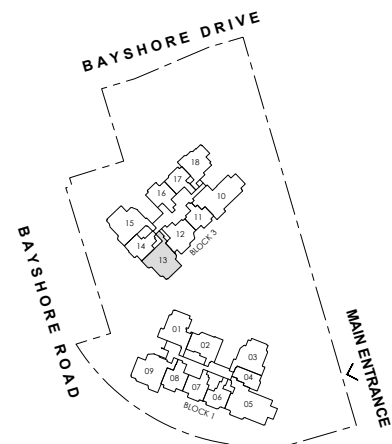


LEGEND:

- F FRIDGE
- W/D WASHER AND DRYER
- DB DISTRIBUTION BOARD
- WC WATER CLOSET
- HS HOUSEHOLD SHELTER
- AC AIR-CONDITIONER (EXCLUDED FROM STRATA AREA)
- RC REINFORCED CONCRETE (EXCLUDED FROM STRATA AREA)
- ☒ VOID SPACE (EXCLUDED FROM STRATA AREA)
- ☒ RAINWATER DOWNPIPE FOR BALCONY (EXCLUDED FROM STRATA AREA)
- WALLS NOT ALLOWED TO BE HACKED / ALTERED / DRILLED



ALL PLANS ARE SUBJECT TO CHANGES BY THE RELEVANT AUTHORITIES.
MEASUREMENTS ARE APPROXIMATE ONLY AND SUBJECT TO FINAL SURVEY.
INFORMATION ACCURATE AT POINT OF PRINTING.
BP NO.: A1716-00045-2025-BP01 DATED 09-FEB-2026



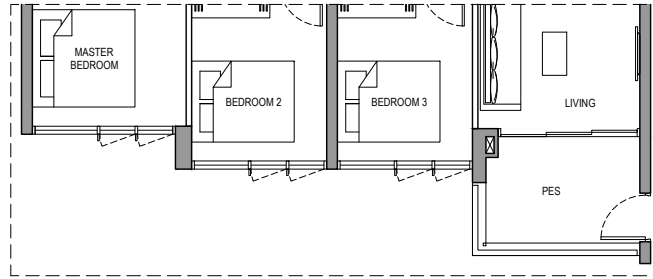
N
KEY PLAN
NOT TO SCALE

4 BEDROOM

TYPE 4BR (A) PES

109 SQM/ 1,173 SQFT
(INCLUSIVE OF 7 SQM PES)

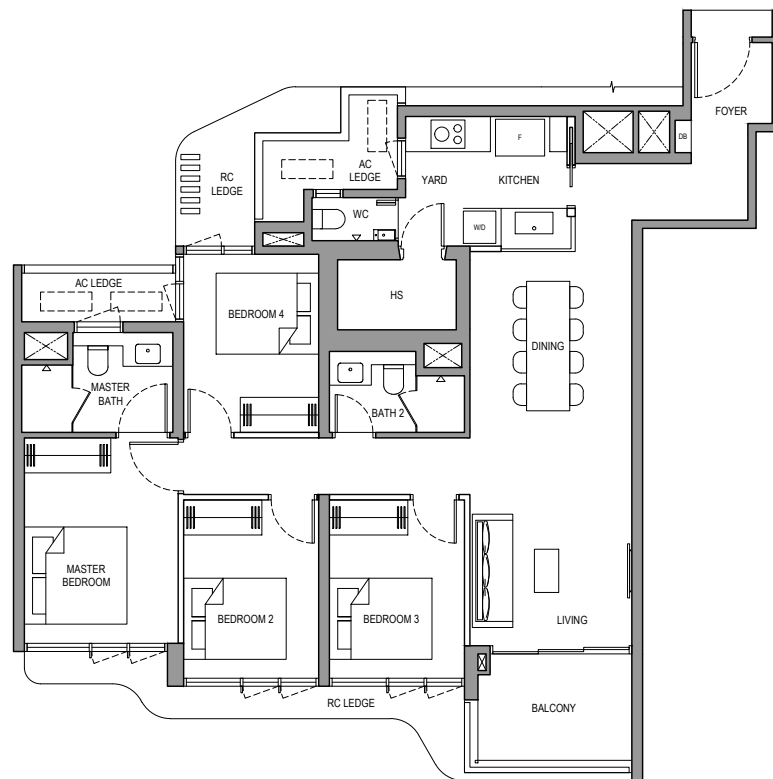
BLOCK 1 #01-09



TYPE 4BR (A)

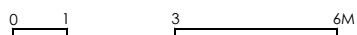
109 SQM/ 1,173 SQFT
(INCLUSIVE OF 7 SQM BALCONY)

BLOCK 1 #02-09 to #31-09

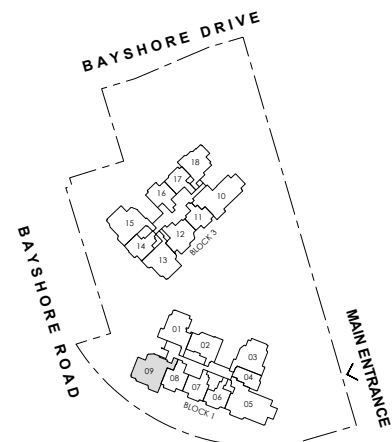


LEGEND:

- F FRIDGE
- W/D WASHER AND DRYER
- DB DISTRIBUTION BOARD
- WC WATER CLOSET
- HS HOUSEHOLD SHELTER
- AC AIR-CONDITIONER (EXCLUDED FROM STRATA AREA)
- RC REINFORCED CONCRETE (EXCLUDED FROM STRATA AREA)
- ☒ VOID SPACE (EXCLUDED FROM STRATA AREA)
- ☒ RAINWATER DOWNPIPE FOR BALCONY (EXCLUDED FROM STRATA AREA)
- WALLS NOT ALLOWED TO BE HACKED / ALTERED / DRILLED



ALL PLANS ARE SUBJECT TO CHANGES BY THE RELEVANT AUTHORITIES.
MEASUREMENTS ARE APPROXIMATE ONLY AND SUBJECT TO FINAL SURVEY.
INFORMATION ACCURATE AT POINT OF PRINTING.
BP NO.: A1716-00045-2025-BP01 DATED 09-FEB-2026



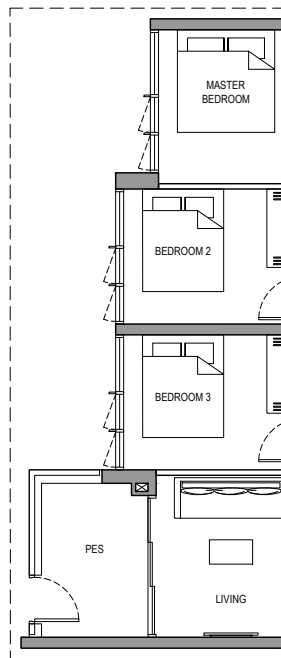
N
KEY PLAN
NOT TO SCALE

4 BEDROOM

TYPE 4BR (B) PES

109 SQM/ 1,173 SQFT
(INCLUSIVE OF 7 SQM PES)

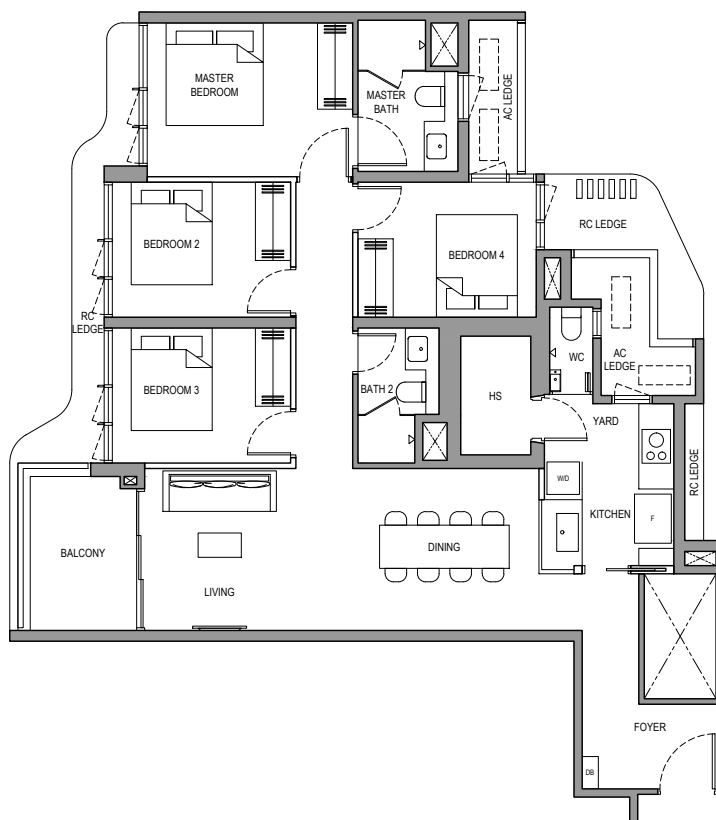
BLOCK 3 #01-15



TYPE 4BR (B)

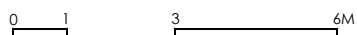
109 SQM/ 1,173 SQFT
(INCLUSIVE OF 7 SQM BALCONY)

BLOCK 3 #02-15 to #31-15

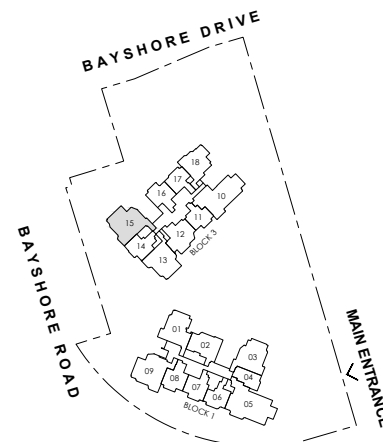


LEGEND:

- F FRIDGE
- W/D WASHER AND DRYER
- DB DISTRIBUTION BOARD
- WC WATER CLOSET
- HS HOUSEHOLD SHELTER
- AC AIR-CONDITIONER (EXCLUDED FROM STRATA AREA)
- RC REINFORCED CONCRETE (EXCLUDED FROM STRATA AREA)
- ☒ VOID SPACE (EXCLUDED FROM STRATA AREA)
- ☒ RAINWATER DOWNPIPE FOR BALCONY (EXCLUDED FROM STRATA AREA)
- WALLS NOT ALLOWED TO BE HACKED / ALTERED / DRILLED



ALL PLANS ARE SUBJECT TO CHANGES BY THE RELEVANT AUTHORITIES.
MEASUREMENTS ARE APPROXIMATE ONLY AND SUBJECT TO FINAL SURVEY.
INFORMATION ACCURATE AT POINT OF PRINTING.
BP NO.: A1716-00045-2025-BP01 DATED 09-FEB-2026

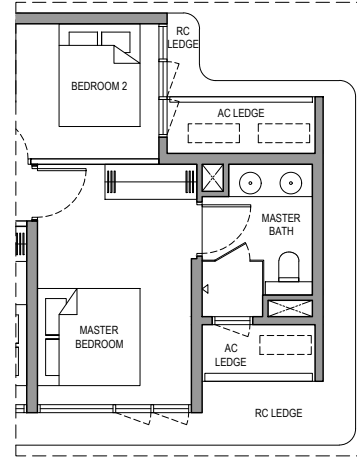


N
KEY PLAN
NOT TO SCALE

4 BEDROOM (PRIVATE LIFT)

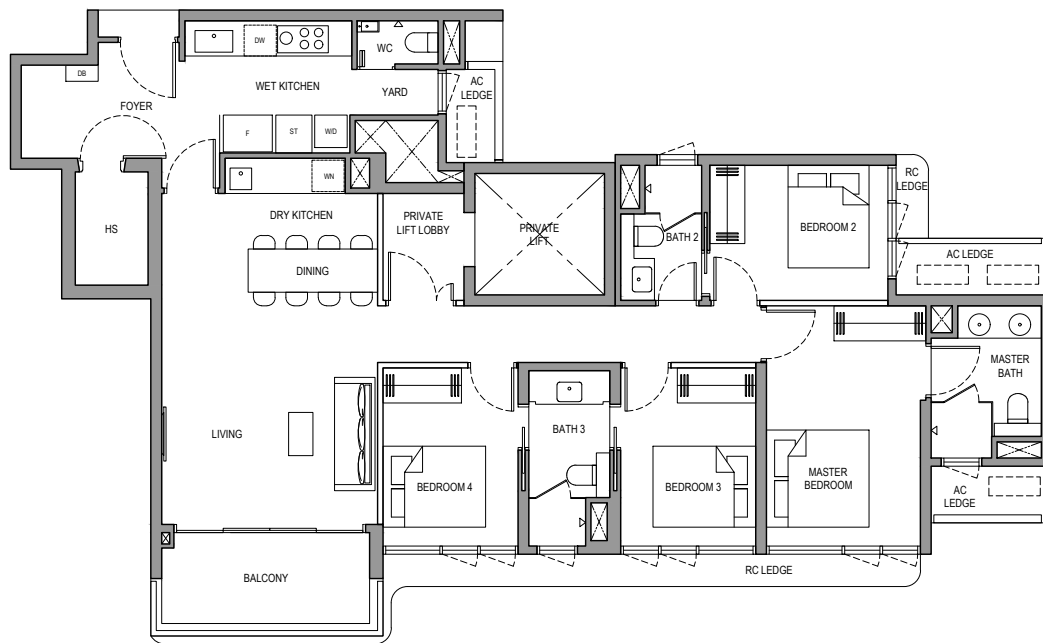
TYPE 4BR PL

128 SQM/ 1,378 SQFT
(INCLUSIVE OF 8 SQM BALCONY,
4 SQM PRIVATE LIFT LOBBY)
BLOCK 3 #05-10



TYPE 4BR PL

128 SQM/ 1,378 SQFT
(INCLUSIVE OF 8 SQM BALCONY,
4 SQM PRIVATE LIFT LOBBY)
BLOCK 3 #06-10 to #30-10

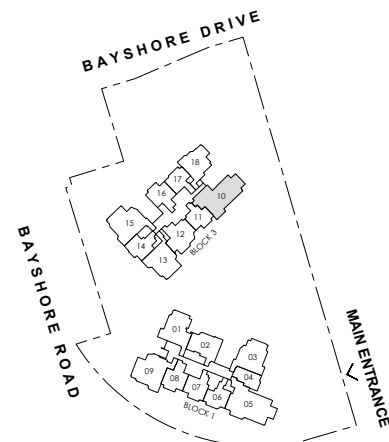


LEGEND:

- F FRIDGE
- W/D WASHER AND DRYER
- DB DISTRIBUTION BOARD
- ST STORE
- WC WATER CLOSET
- HS HOUSEHOLD SHELTER
- WN WINE CHILLER
- DW DISHWASHER
- AC AIR-CONDITIONER (EXCLUDED FROM STRATA AREA)
- RC REINFORCED CONCRETE (EXCLUDED FROM STRATA AREA)
- ☐ VOID SPACE (EXCLUDED FROM STRATA AREA)
- ☒ RAINWATER DOWNPIPE FOR BALCONY (EXCLUDED FROM STRATA AREA)
- WALLS NOT ALLOWED TO BE HACKED / ALTERED / DRILLED

0 1 3 6M

ALL PLANS ARE SUBJECT TO CHANGES BY THE RELEVANT AUTHORITIES.
MEASUREMENTS ARE APPROXIMATE ONLY AND SUBJECT TO FINAL SURVEY.
INFORMATION ACCURATE AT POINT OF PRINTING.
BP NO.: A1716-00045-2025-BP01 DATED 09-FEB-2026



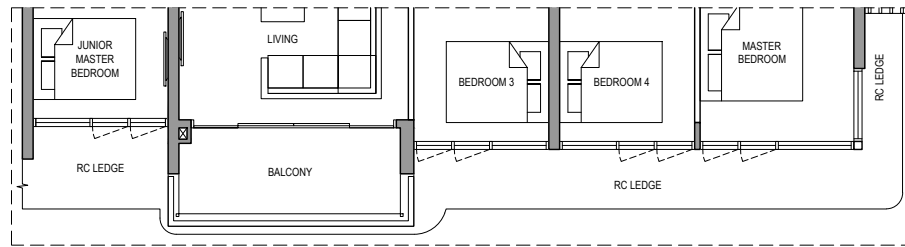
N
KEY PLAN
NOT TO SCALE

5 BEDROOM (PRIVATE LIFT)

TYPE 5BR PL

147 SQM/ 1,582 SQFT
(INCLUSIVE OF 8 SQM BALCONY,
4 SQM PRIVATE LIFT LOBBY)

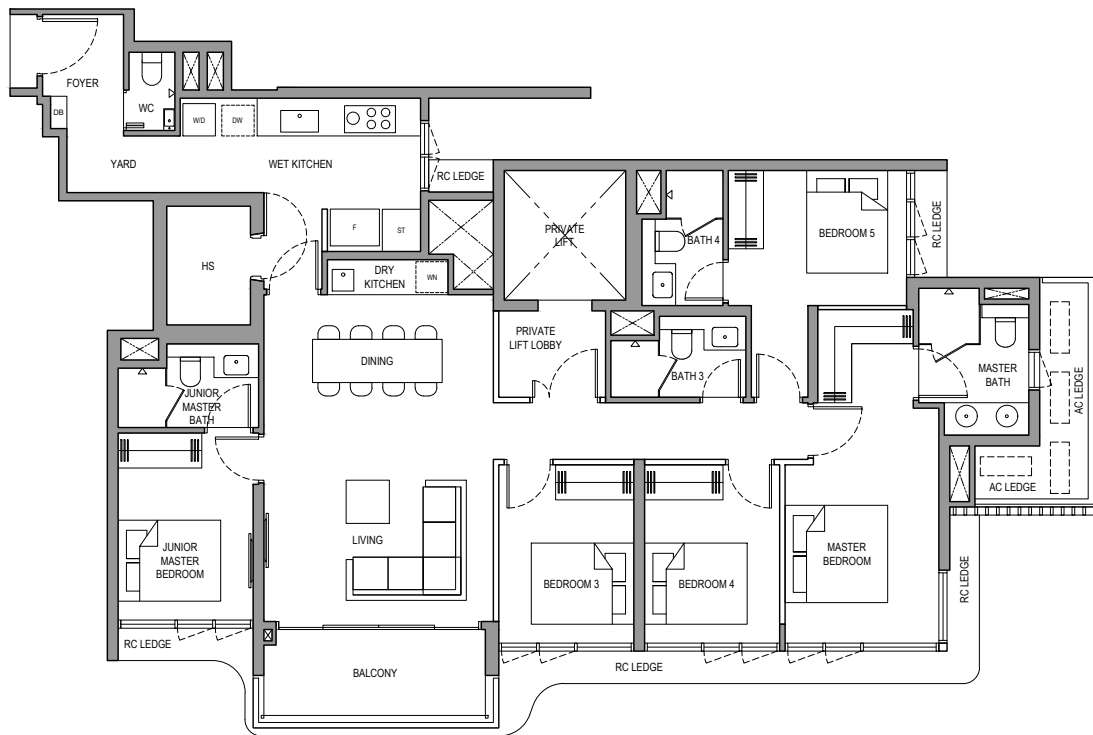
BLOCK 1 #05-05



TYPE 5BR PL

147 SQM/ 1,582 SQFT
(INCLUSIVE OF 8 SQM BALCONY,
4 SQM PRIVATE LIFT LOBBY)

BLOCK 1 #06-05 to #30-05

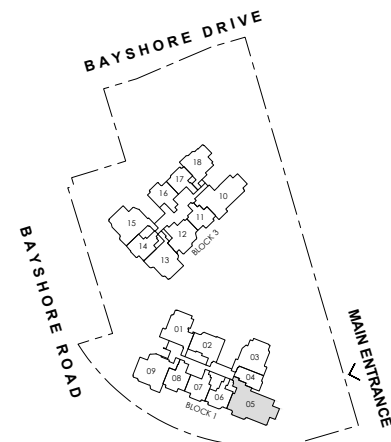


LEGEND:

- F FRIDGE
- W/D WASHER AND DRYER
- DB DISTRIBUTION BOARD
- ST STORE
- WC WATER CLOSET
- HS HOUSEHOLD SHELTER
- WN WINE CHILLER
- DW DISHWASHER
- AC AIR-CONDITIONER (EXCLUDED FROM STRATA AREA)
- RC REINFORCED CONCRETE (EXCLUDED FROM STRATA AREA)
- VOID SPACE (EXCLUDED FROM STRATA AREA)
- RAINWATER DOWNPIPE FOR BALCONY (EXCLUDED FROM STRATA AREA)
- WALLS NOT ALLOWED TO BE HACKED / ALTERED / DRILLED

0 1 3 6M

ALL PLANS ARE SUBJECT TO CHANGES BY THE RELEVANT AUTHORITIES.
MEASUREMENTS ARE APPROXIMATE ONLY AND SUBJECT TO FINAL SURVEY.
INFORMATION ACCURATE AT POINT OF PRINTING.
BP NO.: A1716-00045-2025-BP01 DATED 09-FEB-2026



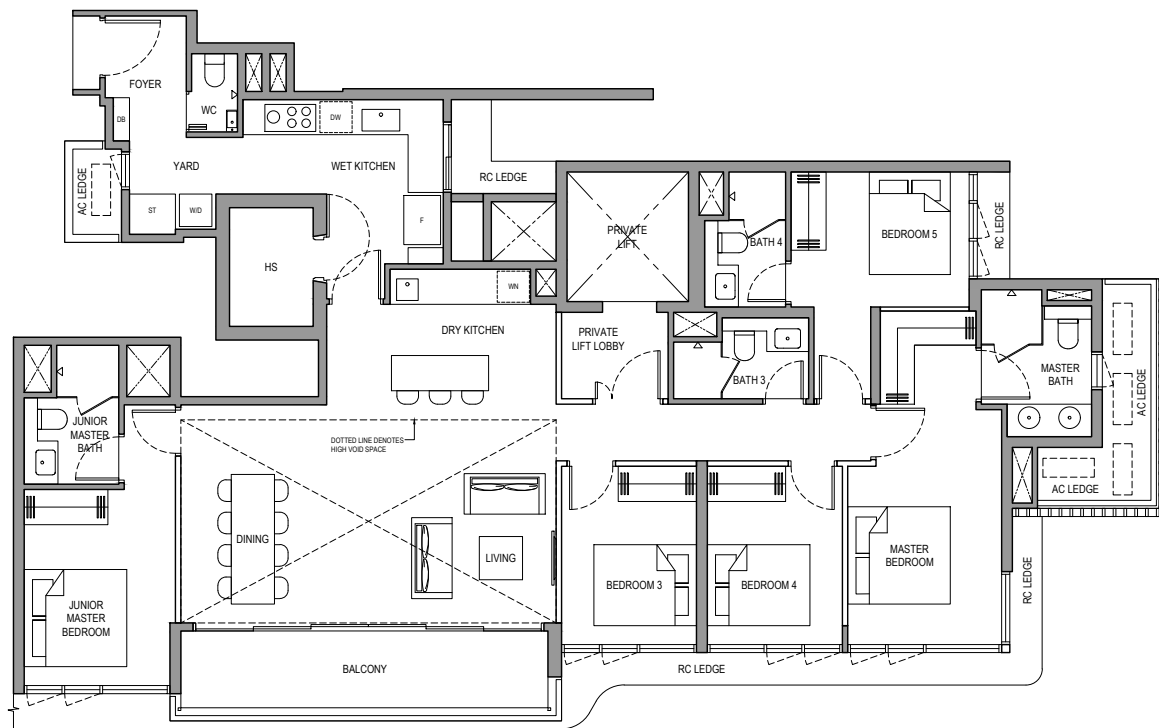
N
KEY PLAN
NOT TO SCALE

PENTHOUSE 1

TYPE PH 1

164 SQM/ 1,765 SQFT
(INCLUSIVE OF 12 SQM BALCONY,
4 SQM PRIVATE LIFT LOBBY)

BLOCK 1 #31-05

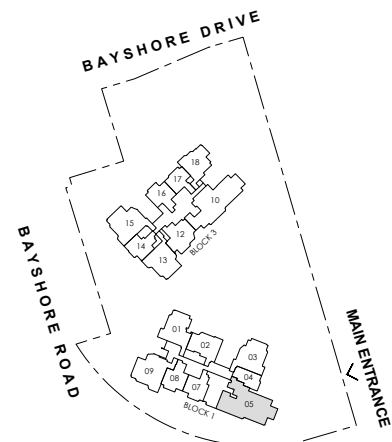


LEGEND:

- F FRIDGE
- W/D WASHER AND DRYER
- DB DISTRIBUTION BOARD
- ST STORE
- WC WATER CLOSET
- HS HOUSEHOLD SHELTER
- WN WINE CHILLER
- DW DISHWASHER
- AC AIR-CONDITIONER (EXCLUDED FROM STRATA AREA)
- RC REINFORCED CONCRETE (EXCLUDED FROM STRATA AREA)
- ⊠ VOID SPACE (EXCLUDED FROM STRATA AREA)
- ⊡ HIGH VOID SPACE (EXCLUDED FROM STRATA AREA)
- WALLS NOT ALLOWED TO BE HACKED / ALTERED / DRILLED

0 1 3 6M

ALL PLANS ARE SUBJECT TO CHANGES BY THE RELEVANT AUTHORITIES.
MEASUREMENTS ARE APPROXIMATE ONLY AND SUBJECT TO FINAL SURVEY.
INFORMATION ACCURATE AT POINT OF PRINTING.
BP NO.: A1716-00045-2025-BP01 DATED 09-FEB-2026



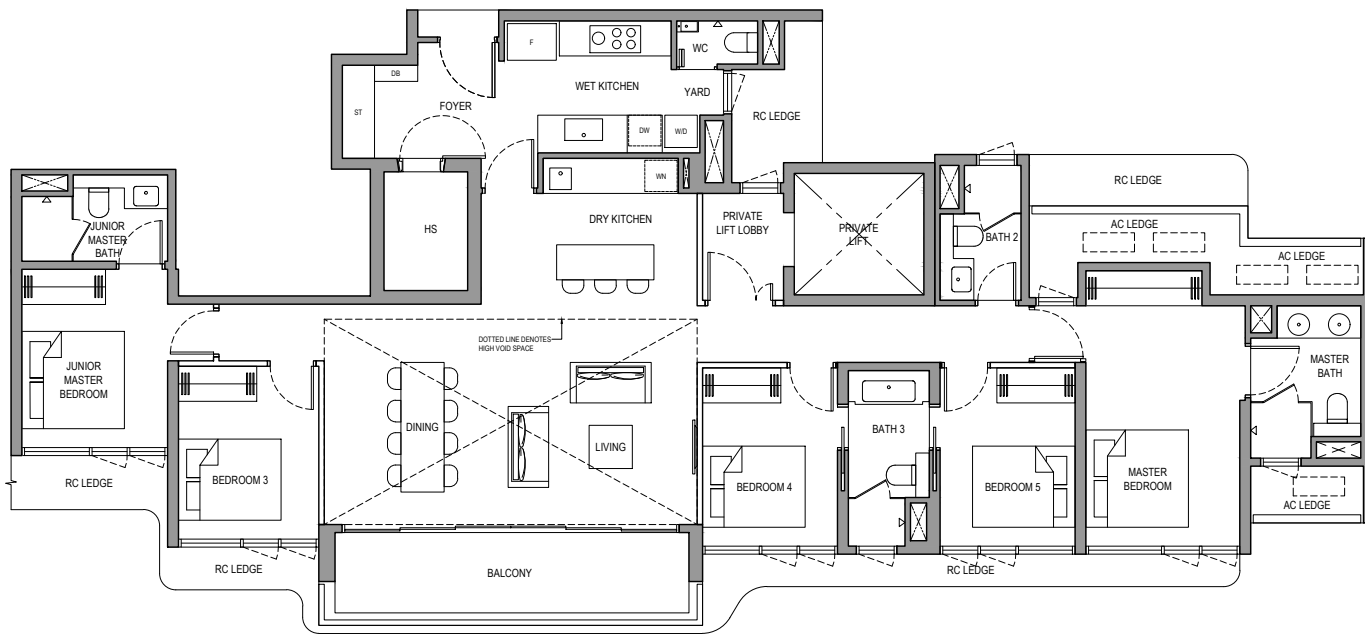
N
KEY PLAN
NOT TO SCALE

PENTHOUSE 2

TYPE PH 2

164 SQM/ 1,765 SQFT
(INCLUSIVE OF 12 SQM BALCONY,
4 SQM PRIVATE LIFT LOBBY)

BLOCK 3 #31-10

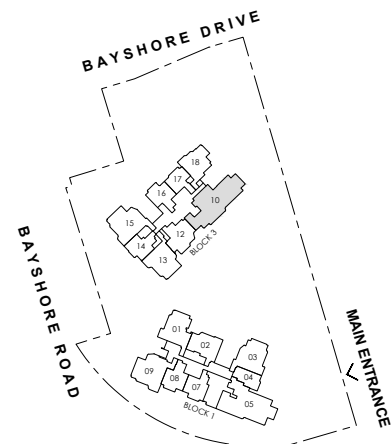


LEGEND:

- F FRIDGE
- W/D WASHER AND DRYER
- DB DISTRIBUTION BOARD
- ST STORE
- WC WATER CLOSET
- HS HOUSEHOLD SHELTER
- WN WINE CHILLER
- DW DISHWASHER
- AC AIR-CONDITIONER (EXCLUDED FROM STRATA AREA)
- RC REINFORCED CONCRETE (EXCLUDED FROM STRATA AREA)
- ▨ VOID SPACE (EXCLUDED FROM STRATA AREA)
- ▩ HIGH VOID SPACE (EXCLUDED FROM STRATA AREA)
- WALLS NOT ALLOWED TO BE HACKED / ALTERED / DRILLED

0 1 3 6M

ALL PLANS ARE SUBJECT TO CHANGES BY THE RELEVANT AUTHORITIES.
MEASUREMENTS ARE APPROXIMATE ONLY AND SUBJECT TO FINAL SURVEY.
INFORMATION ACCURATE AT POINT OF PRINTING.
BP NO.: A1716-00045-2025-BP01 DATED 09-FEB-2026



N
KEY PLAN
NOT TO SCALE