



## CITY DEVELOPMENTS LIMITED

SINGAPORE'S TRUSTED PROPERTY PIONEER SINCE 1963

PROJECT DETAILS: Vendor (developer): Crescent View Developments Pte Ltd (UEN 201222834W) [Jointly developed by City Developments Limited (UEN 1963003162) and Hong Leong Holdings Limited (UEN 1968002902Z)] • Tenure of Land: Leasehold estate 99 years commencing from 5 December 2012 • Lot No.: 10535L MK 24 • Developer Licence No.: C1046 • Expected Date of Vacant Possession: 6 September 2017 • Expected Date of Legal Completion: 6 September 2020

Reasonable care has been taken in the preparation of this brochure, the construction of the scale model and the showflat (collectively called the "Collaterals"), but the vendor and its agents do not warrant the accuracy of the Collaterals and will not be held responsible for any inaccuracy or omission in the Collaterals. The statements, information and depictions in the Collaterals may not be relied upon as statements or representations of fact and they are not intended to form any part of the offer or the contract for the sale of the units. In particular, visual representations such as pictures, art renderings, depictions, illustrations and drawings are artistic impressions only and cannot be regarded as representations of fact. The brand, colour and model of all materials, fittings, equipment, finishes, installations and appliances supplied shall be provided subject to the vendor's architect's selection, market availability and the sole discretion of the vendor.

All information contained in the Collaterals, including equipment, materials, fittings, finishes, installations and appliances description, plans and specifications, are current at the time of print, and are subject to such changes as are required by the vendor and/or the relevant authorities. The floor areas stated in the brochure, scale model and/or showflat are approximate measurements and are subject to final survey. The Sale and Purchase Agreement shall form the entire agreement between the vendor and the purchaser and shall supersede all statements, representations or promises made prior to the signing of the Sale and Purchase Agreement and shall in no way be modified by any statements, representations or promises made by the vendor and/or its agents.

This brochure is printed on eco-friendly paper.

THE VENUE

WHERE IT ALL COMES TOGETHER

RESIDENCES



WHERE IT ALL COMES TOGETHER



Sensible layout and spacious room perfect for families



For illustration only



Artist's impression  
Savour the pleasure of living in a mixed development

# A PERFECT MIX FOR THE GOOD LIFE

Potong Pasir MRT is just a three-minute walk away



Welcome to The Venue Residences and Shoppes, the mixed development where it all comes together. Located at the junction where Upper Serangoon Road meets Macpherson Road, it is a mere three-minute walk to Potong Pasir MRT Station.

Enjoy panoramic views of the city as well as the surrounding landed estate with a thoroughly modern architecture that plays with a mix of high-rise towers and low-rise block. With The Venue Shoppes on the ground floor, savour the pleasure of shopping and dining right at your doorstep with 28 retail units. Truly, all you need for the good life is right here.

360° panoramic view from actual site (estimated Level 18)

For illustration only



Marina Bay Sands (11-min drive)

Raffles Place (10-min drive)

City Square Mall (2 MRT stops)

Orchard Road (8-min drive)

PIE

St. Andrew's Junior Sch (Within 1km/10-min walk)

Potong Pasir MRT (3-min walk)

NEX (2 MRT stops)

Future market square and town plaza

Future Bidadari Park with Alkaff Lake

Maris Stella Pri/High (7-min drive)

Cedar Pri/ Cedar Girls' Sec Sch (3-min drive)

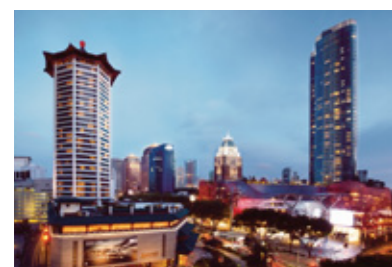
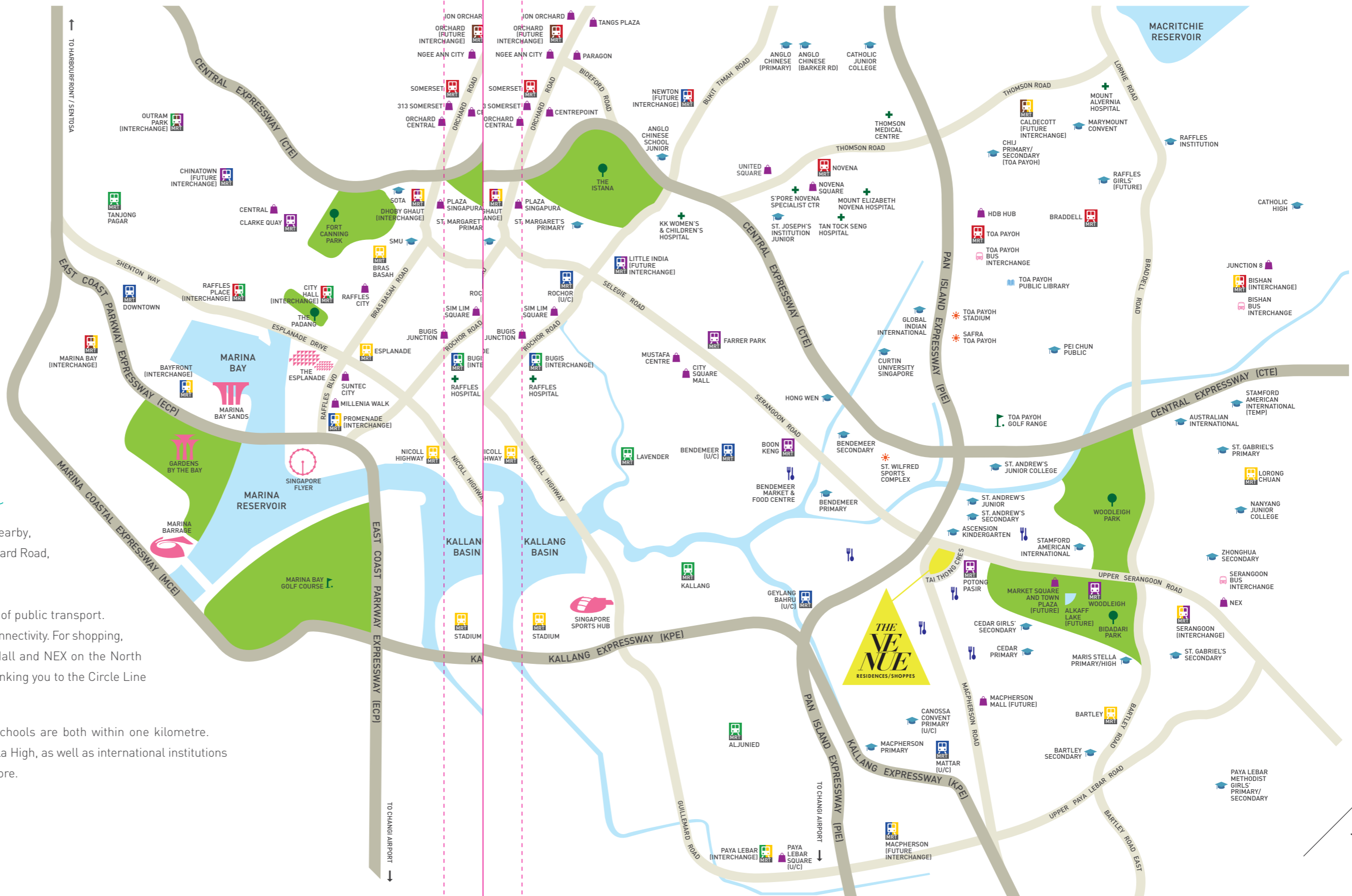
Future Macpherson Mall (3-min drive)

# SO MUCH TO EXPLORE AT YOUR DOOR

Accessibility is never in question with PIE, CTE and KPE conveniently nearby, putting key destinations well within easy reach. By car, you can get to Orchard Road, Raffles Place and Marina Bay Sands in just minutes.

The Venue Residences and Shoppes is also well serviced by a network of public transport. Just steps away, Potong Pasir MRT Station is your gateway to seamless connectivity. For shopping, dining and entertainment options, simply head towards City Square Mall and NEX on the North East Line. Serangoon MRT Interchange is also two stops away, easily linking you to the Circle Line and beyond.

Places of learning abound too. St. Andrew's Junior and Secondary Schools are both within one kilometre. Also close-by are Cedar Primary, Cedar Girls' Secondary and Maris Stella High, as well as international institutions such as Stamford American International and Curtin University Singapore.



Easy drive to Orchard Road with three expressways close-by



Minutes away to Marina Bay Sands and the vibrant downtown area



Short ride to NEX and Serangoon MRT Interchange



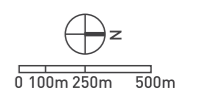
Two MRT stops away, City Square Mall offers more shopping and dining



St. Andrew's Junior School is within one kilometre, a mere 10-minute walk away

## LEGEND

- RECREATION
- MRT
- BUS INTERCHANGE
- GOLF COURSE/RANGE
- GARDEN/PARK
- HOSPITAL
- SHOPPING
- SCHOOL
- LIBRARY
- EATERY



# ROOM FOR INDIVIDUALITY SPACE FOR ALL

Exceptionally spacious 2-bedroom suites designed for family living



For illustration only

Be spoilt for choice with 266 residential units ranging from intimate 1-bedroom suites; spacious 2-bedroom suites; family-sized 3- and 4-bedroom suites; 3-bedroom dual-key suites; to exquisite penthouse suites, the ultimate in luxury.

Luxurious 3-bedroom suites with well-appointed interiors and quality finishes



For illustration only

Kitchen fitted with branded appliances



For illustration only



For illustration only

Whichever home you choose, well-appointed interiors and quality finishes await. For the living and dining area, marble flooring adds a touch of luxe. In the kitchen, a suite of branded appliances from Fisher & Paykel and Teka makes short work of both simple meals or fancy feasts, while the bathroom is a study of modern aesthetics with elegant fittings from Duravit and Hansgrohe.

# LEVEL 1 (RETAIL)



Lounge in origami-inspired cabanas or take a soak in the heated spa



Infinity pool set amidst resort-style landscaping

- \*Sky terraces are located at:
- Blk 6, Level 5 - Reading Garden
  - Blk 8, Level 12 - Meditation Garden
  - Blk 12, Level 5 - Yoga Garden
  - Blk 14, Level 12 - Relaxation Garden

With the blue of the pool calling out, you'd find it hard to resist a quick splash. A whimsical boat sculpture and cabanas inspired by origami further invite you to linger and chill. Over at the club house, the gymnasium stands ready for your workout while the steam rooms offer a spot of therapy. Within the residential blocks, discover sky terraces\* bedecked in green on various levels.

There's plenty to keep kids entertained too such as a children's pool inset with islands of trees. Or let them have the run of the playground with its quaint touches. Game of hopscotch, anyone? Or how about jumping jacks on the trampoline? And with a BBQ alfresco dining area by the pool as well as a function room over at the club house, you'll never be short of party venues.



Vintage lounge with quirky old-school furniture



For illustration only

## KEEP BUSY RELAXING



0 2.5 5 10 15 25m

- 1 GUARD HOUSE
- 2 RESIDENCES ARRIVAL
- 3 SHOPPES ARRIVAL
- 4 CASCADING WATER WALL
- 5 LANDSCAPE POOL
- 6 FOREST WALK
- 7 ANGANA PLAZA
- 8 GARDEN COURT
- 9 ANGANA ALCOVE
- 10 SAGA GROVE
- 11 ASOKA GROVE
- 12 PEDESTRIAN ACCESS

RESTAURANTS/F&B

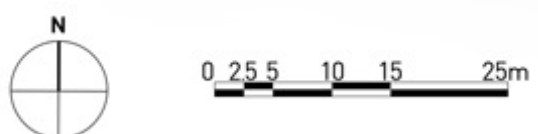
SHOPS

Please note that the renderings of the units shown are for illustrative purpose only. The boundary lines of the units set out herein are accordingly not to be taken as factual representation of the boundary lines of the actual units.

# 1-BEDROOM SUITE

## LEVEL 2 (RESIDENTIAL)

### SCHEMATIC DIAGRAM



- 1 INFINITY POOL
- 2 ORIGAMI BOAT SCULPTURE
- 3 ORIGAMI CABANAS
- 4 CHAMPAKA GROVE
- 5 DAYBED LOUNGE
- 6 SPA
- 7 HEATED SPA
- 8 RAIN SHOWER
- 9 KIDS' POOL
- 10 PALM ISLANDS
- 11 LEAF GARDEN
- 12 FERN GARDEN
- 13 VINTAGE LOUNGE
- 14 HAMMOCK LOUNGE
- 15 CLUB HOUSE  
- FUNCTION ROOM  
- GYMNASIUM  
- CHANGING & STEAM ROOMS
- 16 BBQ ALFRESCO DINING
- 17 KIDS' PLAYGROUND  
- TRAMPOLINE  
- HOPSCOTCH  
- PLAY NET
- 18 MEDITATION PATIO
- 19 YOGA PATIO
- 20 READING PATIO
- 21 FOOT REFLEXOLOGY PATIO
- 22 ROCKING CABANAS
- 23 SKY TERRACES  
- READING GARDEN (BLK 6, LEVEL 5)  
- MEDITATION GARDEN (BLK 8, LEVEL 12)  
- YOGA GARDEN (BLK 12, LEVEL 5)  
- RELAXATION GARDEN (BLK 14, LEVEL 12)

Please note that the renderings of the units as shown are for illustrative purpose only. The boundary lines of the units set out herein are accordingly not to be taken as factual representation of the boundary lines of the actual units.

BLK 6 TAI THONG CRESCENT, SINGAPORE 347840

LEVEL	UNIT	04	01	02	03
18					
17		#17-04 B2	#17-01 PH3	#17-02 PH3	#17-03 B2
16		#16-04 B2	#16-01 D1	#16-02 D1	#16-03 B2
15		#15-04 B2a	#15-01 D1a	#15-02 D1	#15-03 B2
14		#14-04 B2a	#14-01 D1a	#14-02 D1	#14-03 B2
13		#13-04 B2a	#13-01 D1a	#13-02 D1	#13-03 B2
12		#12-04 B2a	#12-01 D1a	#12-02 D1	#12-03 B2
11		#11-04 B2	#11-01 D1	#11-02 D1	#11-03 B2
10		#10-04 B2	#10-01 D1	#10-02 D1	#10-03 B2
09		#09-04 B2	#09-01 D1	#09-02 D1	#09-03 B2
08		#08-04 B2	#08-01 D1	#08-02 D1a	#08-03 B2
07		#07-04 B2	#07-01 D1a	#07-02 D1a	#07-03 B2
06		#06-04 B2	#06-01 D1a	#06-02 D1a	#06-03 B2
05		#05-04 B2	#05-01 D1	#05-02 D1a	#05-03 B2
04		#04-04 B2	#04-01 D1	#04-02 D1	#04-03 B2
03		#03-04 B2	#03-01 D1	#03-02 D1	#03-03 B2
02		#02-04 CP2	#02-01 BP6a	#02-02 BP5	#02-03 AP5

BLK 12 TAI THONG CRESCENT, SINGAPORE 347844

LEVEL	UNIT	17	18	19	20	21	22
18							
17		#17-17 B1	#17-18 PH1	#17-19 PH2	#17-20 B1		
16		#16-17 B1	#16-18 C1	#16-19 CDK	#16-20 B1		
15		#15-17 B1a	#15-18 C1a	#15-19 CDK	#15-20 B1		
14		#14-17 B1a	#14-18 C1a	#14-19 CDK	#14-20 B1		
13		#13-17 B1a	#13-18 C1a	#13-19 CDK	#13-20 B1		
12		#12-17 B1a	#12-18 C1a	#12-19 CDK	#12-20 B1		
11		#11-17 B1	#11-18 C1	#11-19 CDK	#11-20 B1		
10		#10-17 B1	#10-18 C1	#10-19 CDK	#10-20 B1		
09		#09-17 B1	#09-18 C1	#09-19 CDK	#09-20 B1		
08		#08-17 B1	#08-18 C1	#08-19 CDKa	#08-20 A1		
07		#07-17 B1	#07-18 C1	#07-19 CDKa	#07-20 A1		
06		#06-17 B1	#06-18 C1	#06-19 CDKa	#06-20 A1		
05		#05-17 B1	#05-18 C1	#05-19 CDKa	#05-20 A1		
04		#04-17 B1	#04-18 C1	#04-19 CDK	#04-20 B1		
03		#03-17 B1	#03-18 C1	#03-19 CDK	#03-20 B1		
02		#02-17 AP3	#02-18 BP1	#02-19 AP2	#02-20 BP4	#02-21 BP3	#02-22 AP1

BLK 10 TAI THONG CRESCENT, SINGAPORE 347844

LEVEL	UNIT	11	12	13	14	15	16
02		#02-11 BD	#02-12 BD	#02-13 BD	#02-14 BD	#02-15 BD	#02-16 BD

- 1-BEDROOM SUITE
- 2-BEDROOM SUITE
- 2-BEDROOM + STUDY DUPLEX
- 3-BEDROOM SUITE
- 3-BEDROOM DUAL-KEY SUITE
- 4-BEDROOM SUITE
- PENTHOUSE SUITE

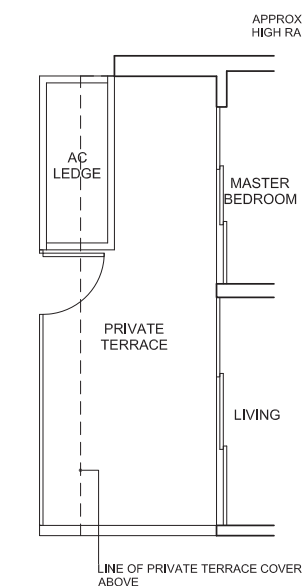
BLK 8 TAI THONG CRESCENT, SINGAPORE 347842

LEVEL	UNIT	05	06	07	08	09	10
18							
17				#17-07 B2	#17-08 PH3	#17-09 PH3	#17-10 B2
16				#16-07 B2	#16-08 C2	#16-09 C2	#16-10 B2
15				#15-07 B2	#15-08 C2a	#15-09 C2	#15-10 B2
14				#14-07 B2	#14-08 C2a	#14-09 C2	#14-10 B2
13				#13-07 B2	#13-08 C2a	#13-09 C2	#13-10 B2
12				#12-07 B2	#12-08 C2a	#12-09 C2	#12-10 B2
11				#11-07 B2	#11-08 C2	#11-09 C2	#11-10 B2
10				#10-07 B2	#10-08 C2	#10-09 C2	#10-10 B2
09				#09-07 B2	#09-08 C2	#09-09 C2	#09-10 B2
08				#08-07 B2	#08-08 C2	#08-09 C2a	#08-10 B2a
07				#07-07 B2	#07-08 C2	#07-09 C2a	#07-10 B2a
06				#06-07 B2	#06-08 C2	#06-09 C2a	#06-10 B2a
05				#05-07 B2	#05-08 C2	#05-09 C2a	#05-10 B2a
04				#04-07 B2	#04-08 C2	#04-09 C2	#04-10 B2
03				#03-07 B2	#03-08 C2	#03-09 C2	#03-10 B2
02		#02-05 AP5a	#02-06 AP5	#02-07 BP5	#02-08 BP6	#02-09 BP7	#02-10 BP5a

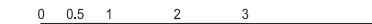
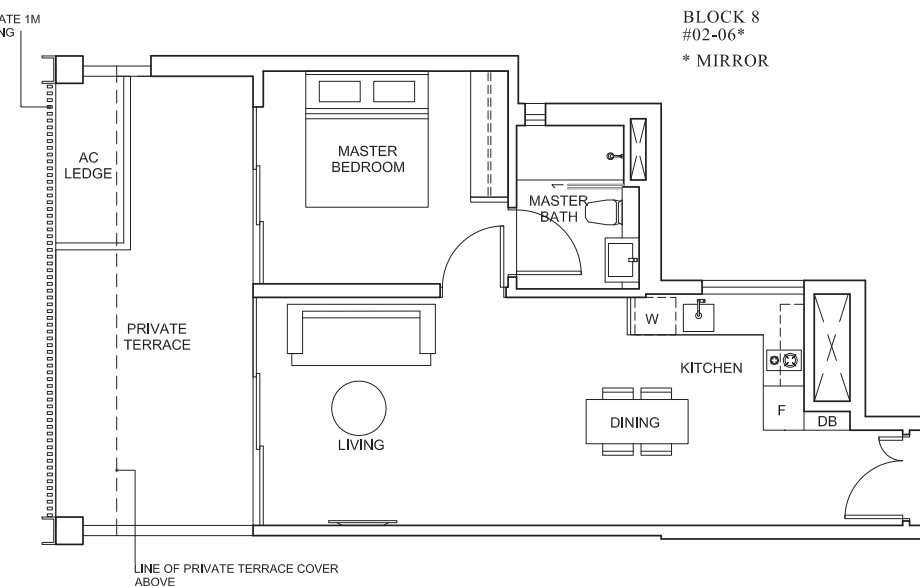
BLK 14 TAI THONG CRESCENT, SINGAPORE 347848

LEVEL	UNIT	24	25	26	23
18					
17		#17-24 B1	#17-25 PH1	#17-26 PH1	#17-23 B1
16		#16-24 B1	#16-25 C1	#16-26 C1	#16-23 B1
15		#15-24 A1	#15-25 C1a	#15-26 C1	#15-23 B1
14		#14-24 A1	#14-25 C1a	#14-26 C1	#14-23 B1
13		#13-24 A1	#13-25 C1a	#13-26 C1	#13-23 B1
12		#12-24 A1	#12-25 C1a	#12-26 C1	#12-23 B1
11		#11-24 B1	#11-25 C1	#11-26 C1	#11-23 B1
10		#10-24 B1	#10-25 C1	#10-26 C1	#10-23 B1
09		#09-24 B1	#09-25 C1	#09-26 C1	#09-23 B1
08		#08-24 B1	#08-25 C1	#08-26 C1a	#08-23 B1a
07		#07-24 B1	#07-25 C1	#07-26 C1a	#07-23 B1a
06		#06-24 B1	#06-25 C1	#06-26 C1a	#06-23 B1a
05		#05-24 B1	#05-25 C1	#05-26 C1a	#05-23 B1a
04		#04-24 B1	#04-25 C1	#04-26 C1	#04-23 B1
03		#03-24 B1	#03-25 C1	#03-26 C1	#03-23 B1
02		#02-24 AP1a	#02-25 AP4	#02-26 BP2	#02-23 CP1

TYPE AP5a  
68 sq.m. / 732 sq.ft  
BLOCK 8  
#02-05



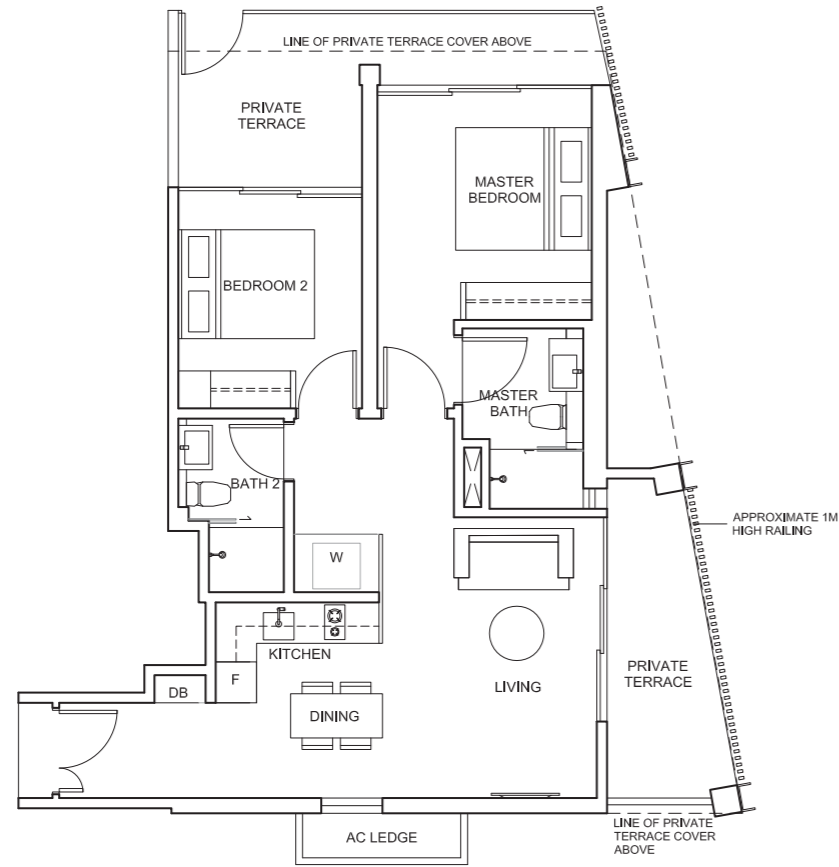
TYPE AP5  
70 sq.m. / 753 sq.ft  
BLOCK 6  
#02-03  
BLOCK 8  
#02-06\*  
\* MIRROR



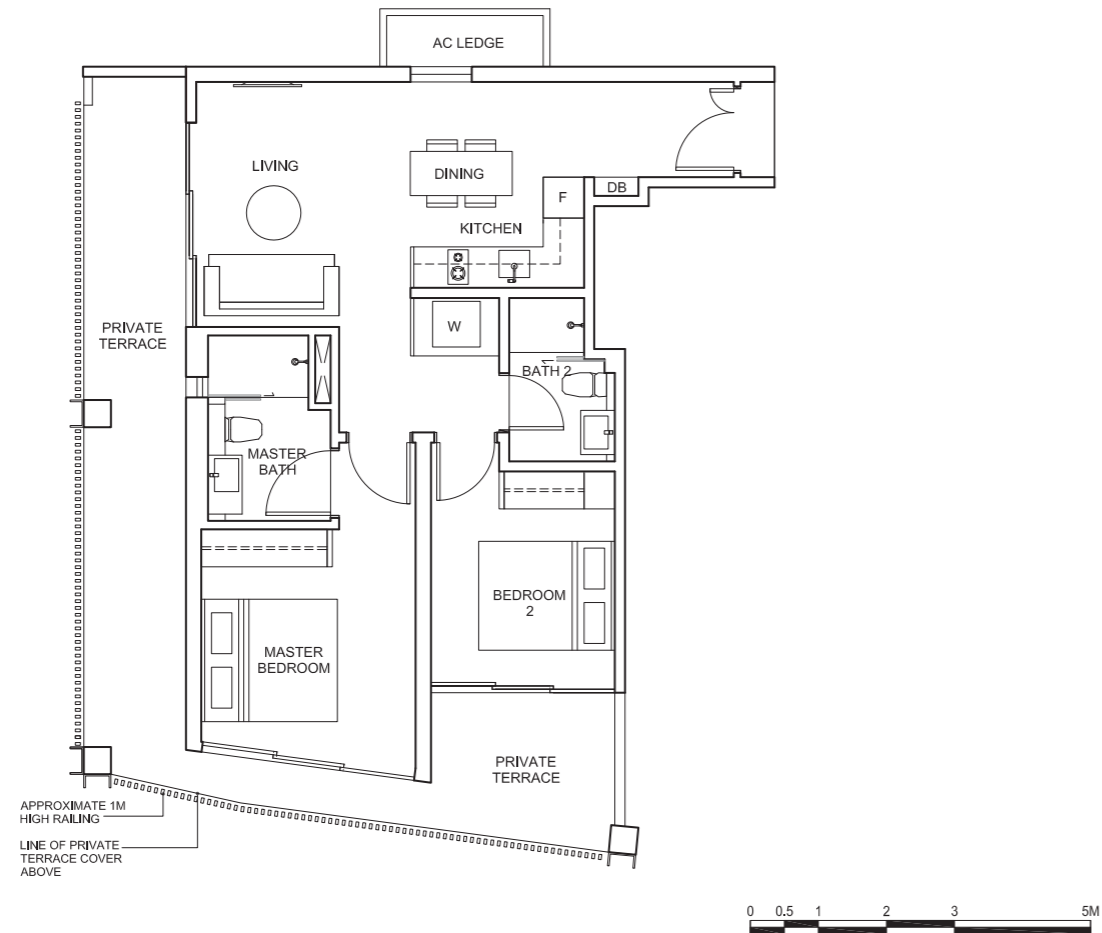
SIZES, QUANTITIES AND SPACING FOR THE RAILING AS INDICATED ARE FOR ILLUSTRATION ONLY AND MAYBE VARIED IN ACTUAL CONSTRUCTION ACCORDING TO THE ARCHITECT'S DISCRETION AND / OR AS REQUIRED BY RELEVANT AUTHORITIES.

# 2-BEDROOM SUITE

**TYPE BP1**  
85 sq.m. / 915 sq.ft  
BLOCK 12  
#02-18



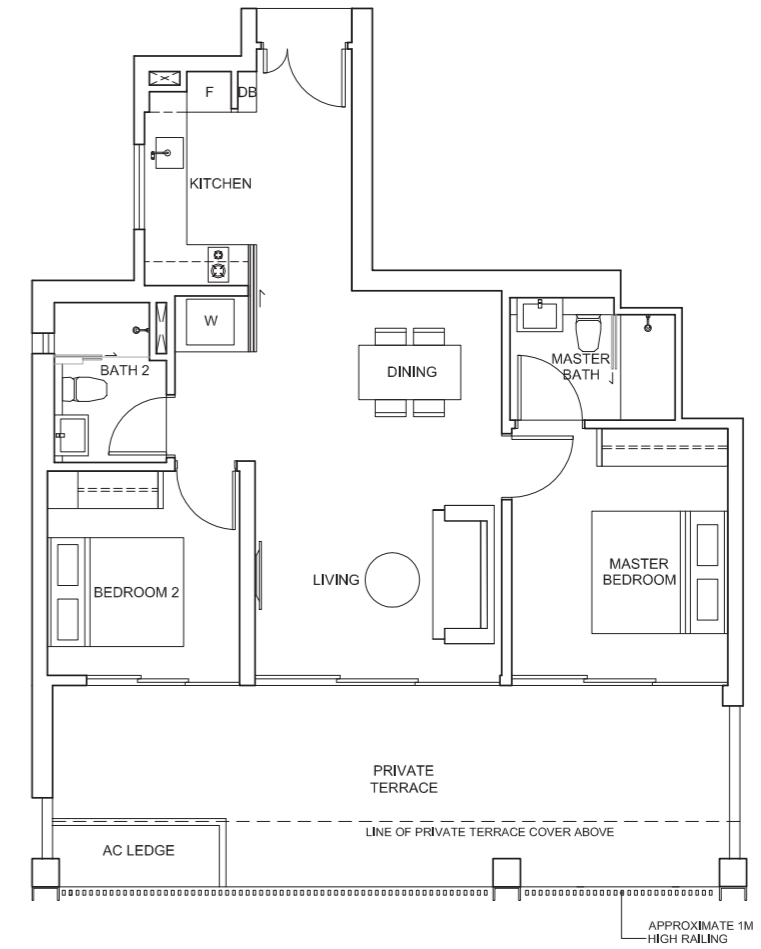
**TYPE BP2**  
91 sq.m. / 980 sq.ft  
BLOCK 14  
#02-26



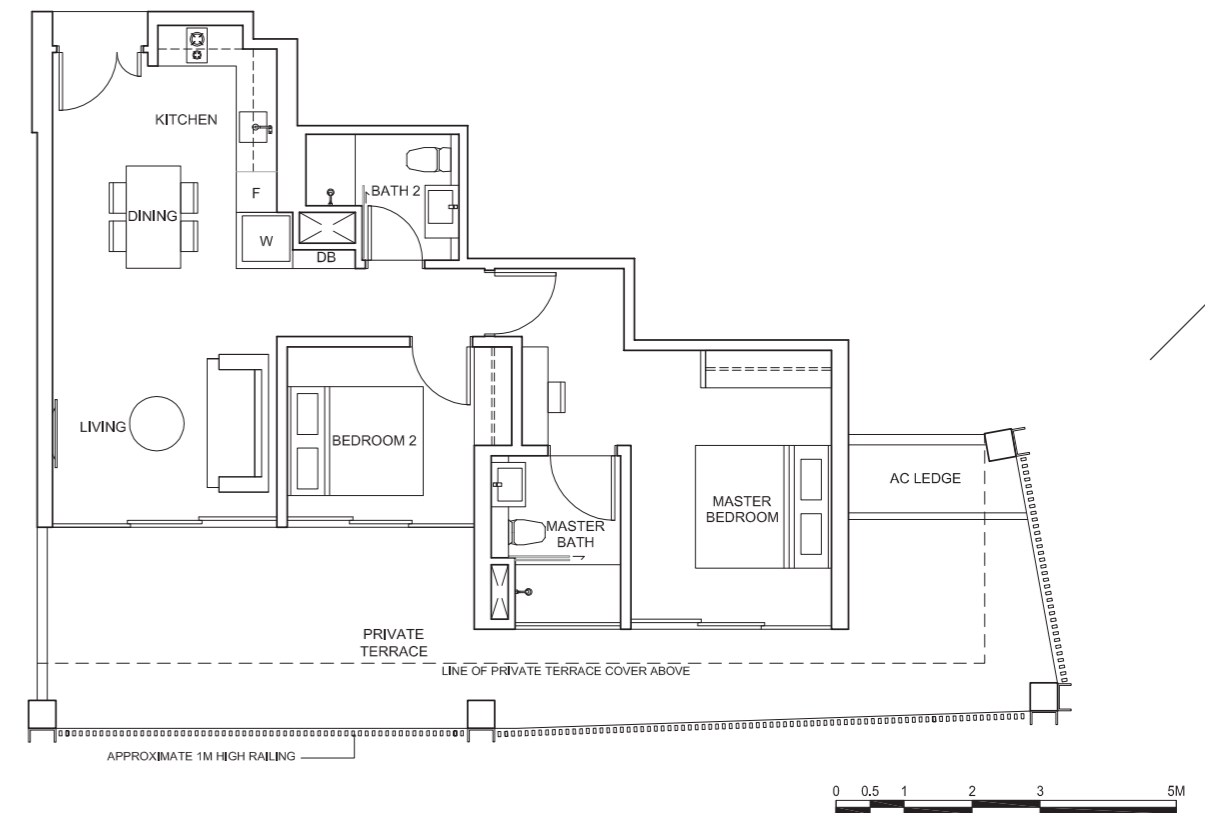
SIZES, QUANTITIES AND SPACING FOR THE RAILING AS INDICATED ARE FOR ILLUSTRATION ONLY AND MAYBE VARIED IN ACTUAL CONSTRUCTION ACCORDING TO THE ARCHITECT'S DISCRETION AND / OR AS REQUIRED BY RELEVANT AUTHORITIES.

# 2-BEDROOM SUITE

**TYPE BP3**  
100 sq.m. / 1076 sq.ft  
BLOCK 12  
#02-21



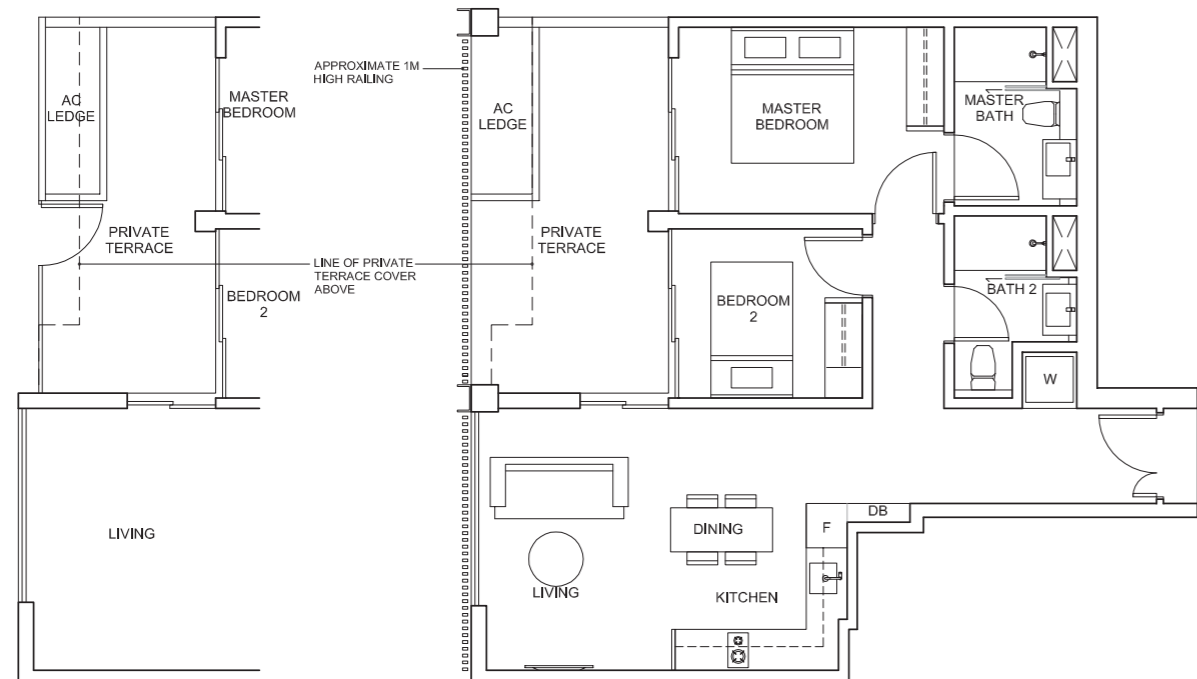
**TYPE BP4**  
104 sq.m. / 1119 sq.ft  
BLOCK 12  
#02-20



SIZES, QUANTITIES AND SPACING FOR THE RAILING AS INDICATED ARE FOR ILLUSTRATION ONLY AND MAYBE VARIED IN ACTUAL CONSTRUCTION ACCORDING TO THE ARCHITECT'S DISCRETION AND / OR AS REQUIRED BY RELEVANT AUTHORITIES.

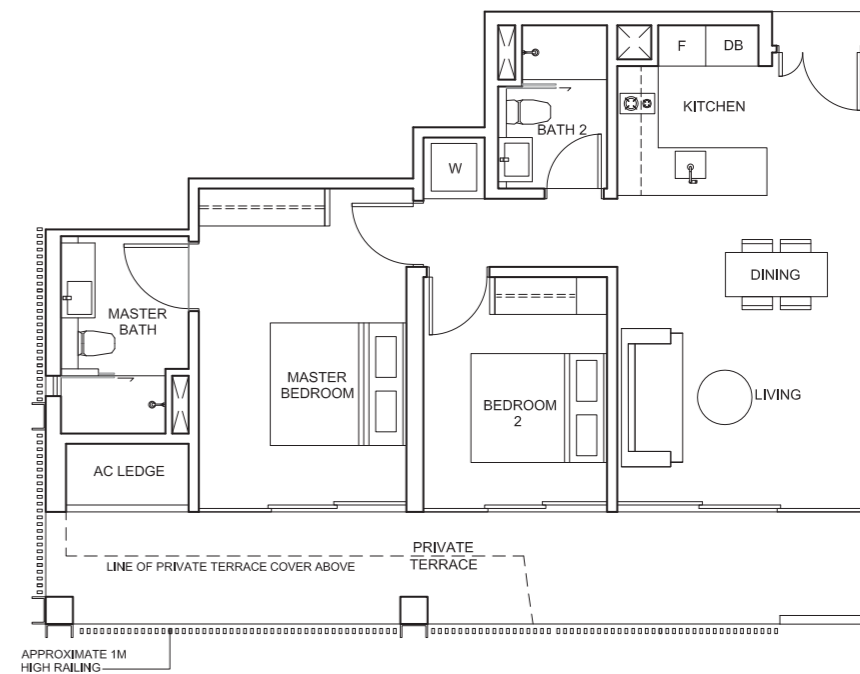
# 2-BEDROOM SUITE

**TYPE BP5a**  
78 sq.m. / 840 sq.ft  
BLOCK 8  
#02-10

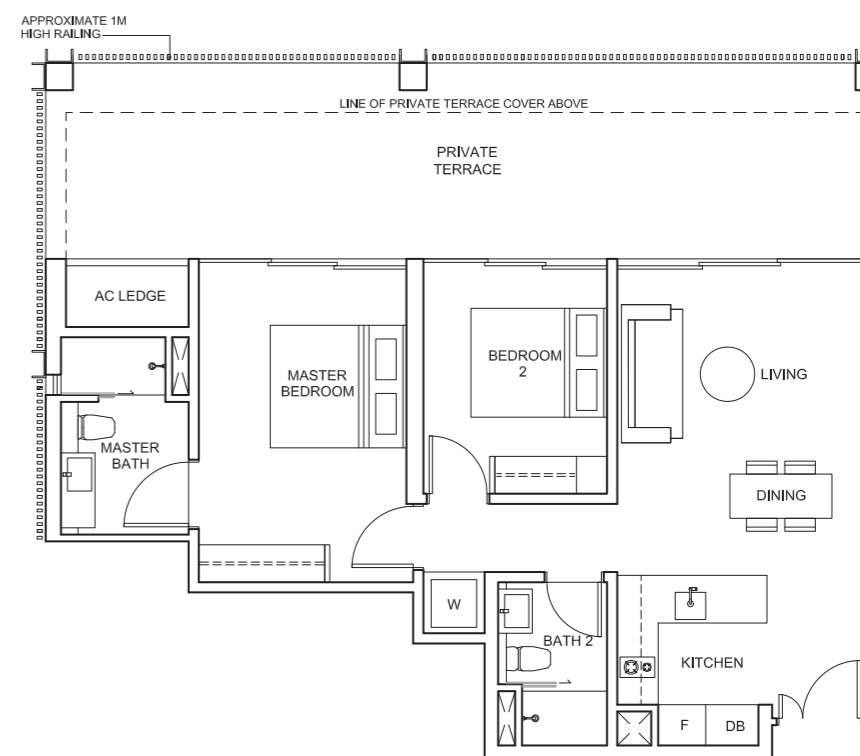


**TYPE BP5**  
80 sq.m. / 861 sq.ft  
BLOCK 6  
#02-02  
BLOCK 8  
#02-07\*  
\* MIRROR

**TYPE BP6a**  
90 sq.m. / 969 sq.ft  
BLOCK 6  
#02-01



**TYPE BP6**  
105 sq.m. / 1130 sq.ft  
BLOCK 8  
#02-08



SIZES, QUANTITIES AND SPACING FOR THE RAILING AS INDICATED ARE FOR ILLUSTRATION ONLY AND MAYBE VARIED IN ACTUAL CONSTRUCTION ACCORDING TO THE ARCHITECT'S DISCRETION AND / OR AS REQUIRED BY RELEVANT AUTHORITIES.

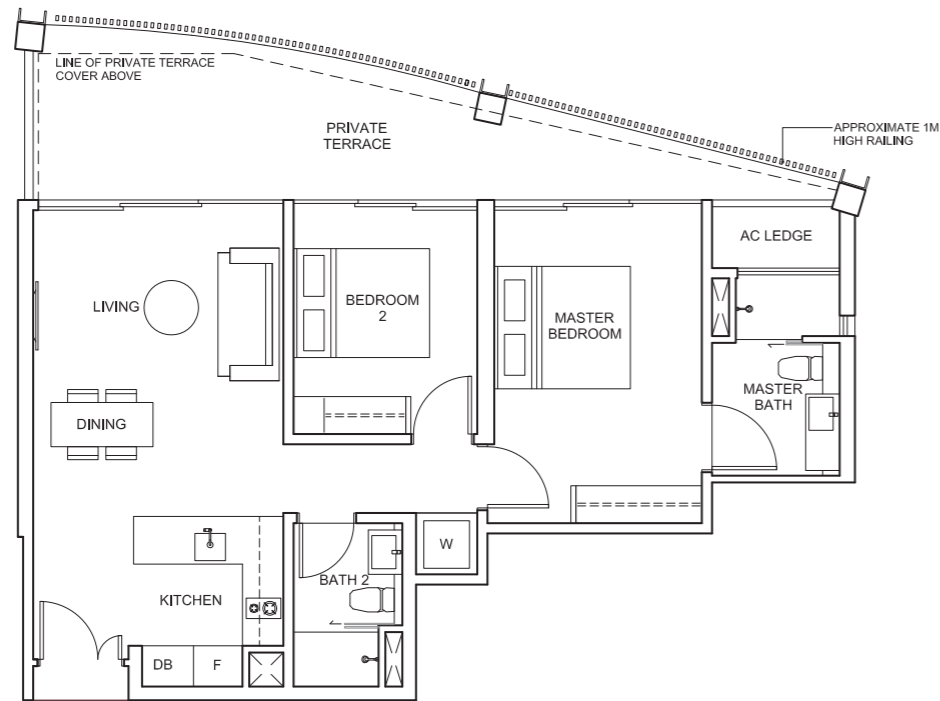


SIZES, QUANTITIES AND SPACING FOR THE RAILING AS INDICATED ARE FOR ILLUSTRATION ONLY AND MAYBE VARIED IN ACTUAL CONSTRUCTION ACCORDING TO THE ARCHITECT'S DISCRETION AND / OR AS REQUIRED BY RELEVANT AUTHORITIES.



# 2-BEDROOM SUITE

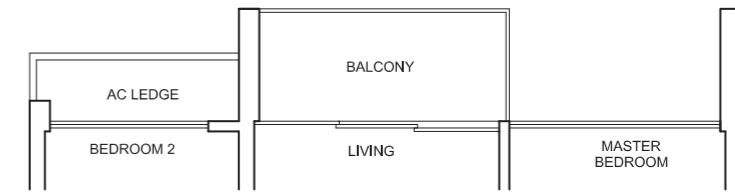
**TYPE BP7**  
90 sq.m. / 969 sq.ft  
BLOCK 8  
#02-09



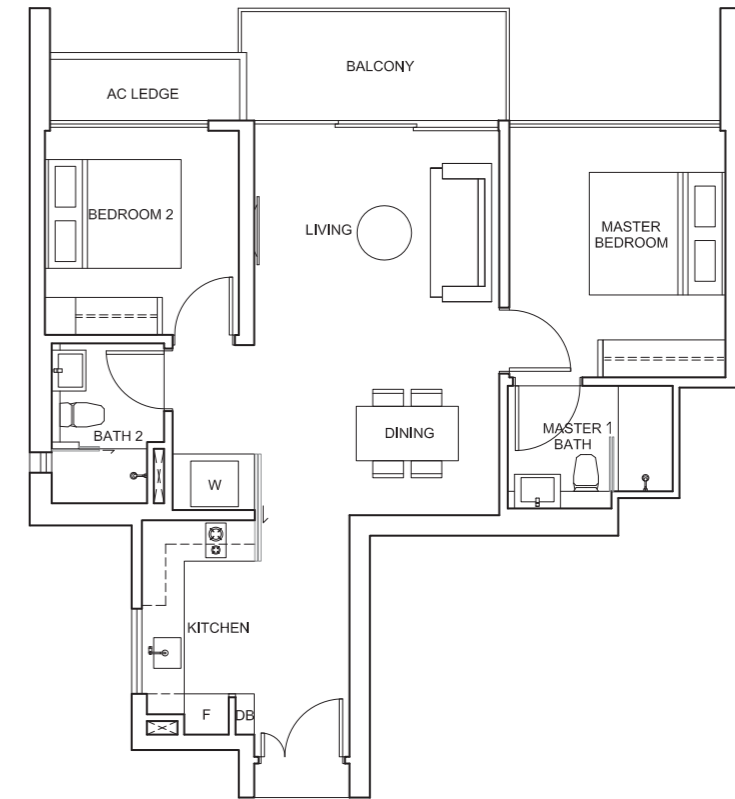
SIZES, QUANTITIES AND SPACING FOR THE RAILING AS INDICATED ARE FOR ILLUSTRATION ONLY AND MAYBE VARIED IN ACTUAL CONSTRUCTION ACCORDING TO THE ARCHITECT'S DISCRETION AND / OR AS REQUIRED BY RELEVANT AUTHORITIES.

# 2-BEDROOM SUITE

**TYPE B1a**  
79 sq.m. / 850 sq.ft  
BLOCK 12  
#12-17 TO #15-17  
BLOCK 14  
#05-23\* TO #08-23\*  
\* MIRROR



**TYPE B1**  
79 sq.m. / 850 sq.ft  
BLOCK 12  
#03-17 TO #11-17  
#16-17 TO #17-17  
#03-20\* TO #04-20\*  
#09-20\* TO #17-20\*  
  
BLOCK 14  
#03-23\* TO #04-23\*  
#09-23\* TO #17-23\*  
#03-24 TO #11-24  
#16-24 TO #17-24  
\* MIRROR

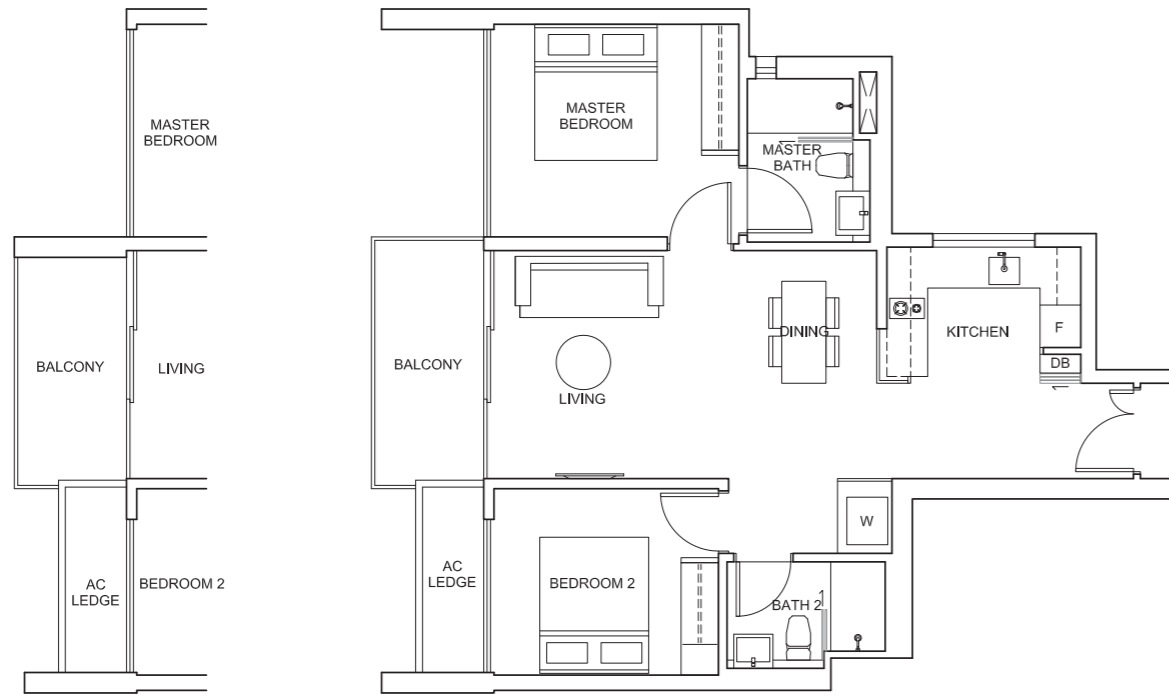


PLEASE NOTE THAT THE ROOF COVERING FOR THE PRIVATE TERRACE OF THE LEVEL 2 UNITS CAN BE SEEN FROM THE LEVEL 3 UNITS. PLEASE REFER TO THE APPROVED PLANS FOR THE ROOF COVERING DESIGN.

# 2-BEDROOM SUITE

**TYPE B2a**  
 78 sq.m. / 840 sq.ft  
 BLOCK 6  
 #12-04\* TO #15-04\*  
 BLOCK 8  
 #05-10 TO #08-10  
 \* MIRROR

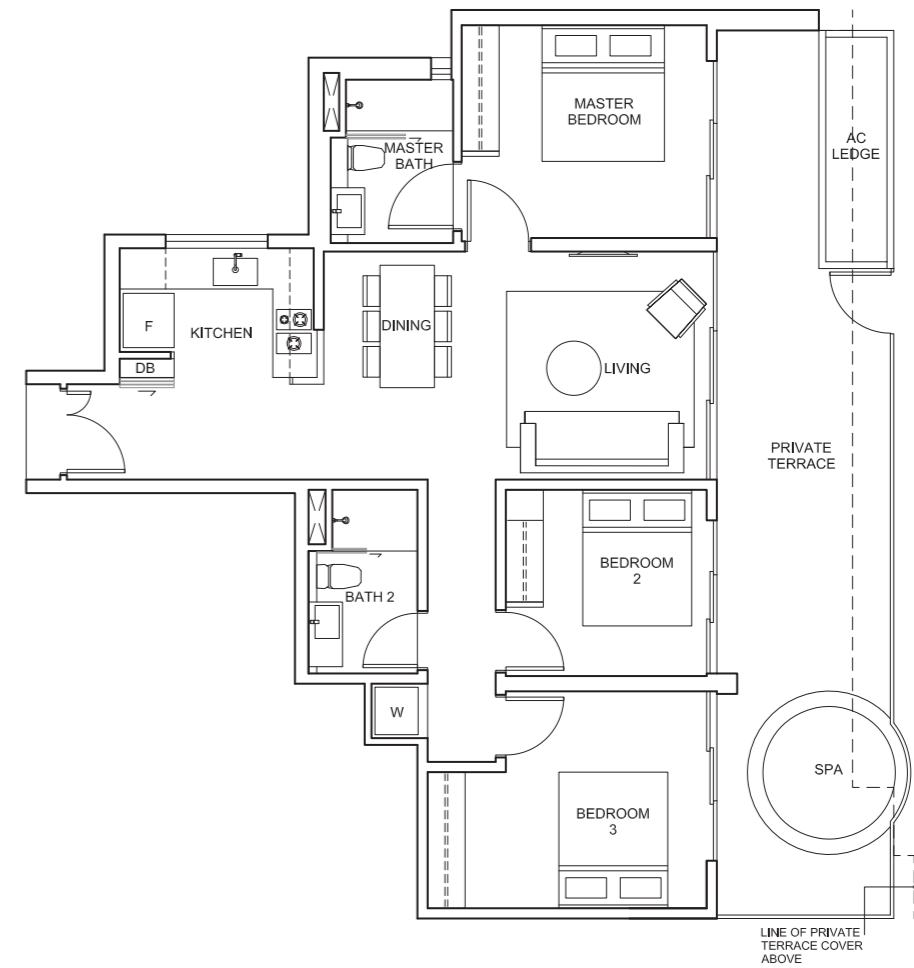
**TYPE B2**  
 78 sq.m. / 840 sq.ft  
 BLOCK 6  
 #03-03 TO #04-03  
 #09-03 TO #17-03  
 #03-04\* TO #11-04\*  
 #16-04\* TO #17-04\*  
 BLOCK 8  
 #03-07\* TO #11-07\*  
 #16-07\* TO #17-07\*  
 #03-10 TO #04-10  
 #09-10 TO #17-10  
 \* MIRROR



PLEASE NOTE THAT THE ROOF COVERING FOR THE PRIVATE TERRACE OF THE LEVEL 2 UNITS CAN BE SEEN FROM THE LEVEL 3 UNITS. PLEASE REFER TO THE APPROVED PLANS FOR THE ROOF COVERING DESIGN.

# 3-BEDROOM SUITE

**TYPE CP2**  
 118 sq.m. / 1270 sq.ft  
 BLOCK 6  
 #02-04



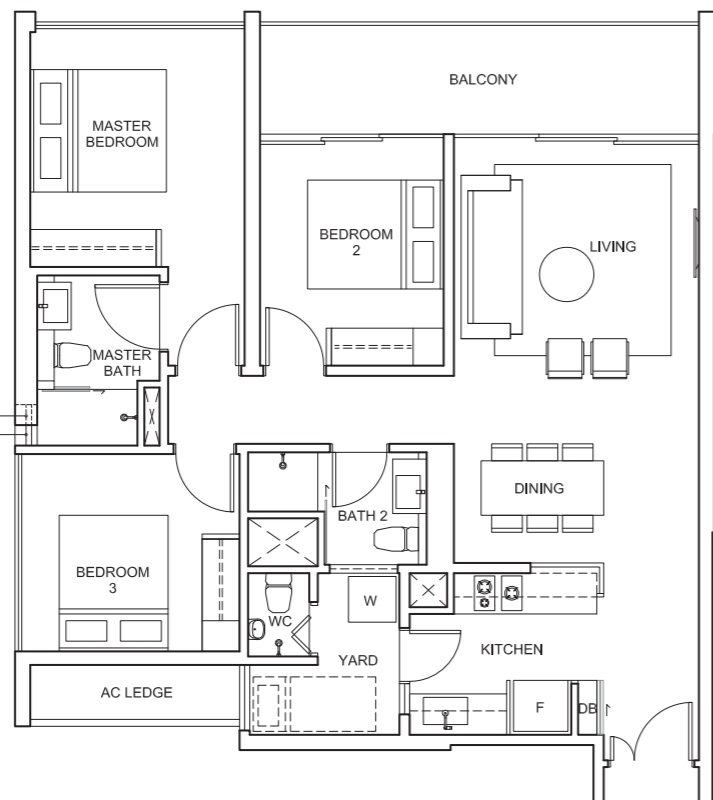
# 3-BEDROOM SUITE

**TYPE C1a**  
 105 sq.m. / 1130 sq.ft  
 BLOCK 12  
 #12-18\* TO #15-18\*  
 BLOCK 14  
 #05-26 TO #08-26  
 #12-25\* TO #15-25\*  
 \* MIRROR



WINDOW POSITION 2 FOR UNITS AT 3RD, 4TH, 7TH, 8TH, 11TH, 12TH, 15TH & 16TH STOREY ONLY  
 WINDOW POSITION 1 FOR UNITS AT 5TH, 6TH, 9TH, 10TH, 13TH & 14TH STOREY ONLY

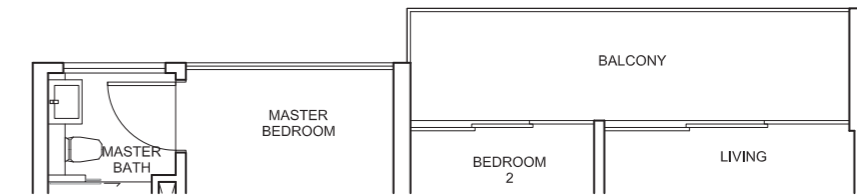
**TYPE C1**  
 105 sq.m. / 1130 sq.ft  
 BLOCK 12  
 #03-18\* TO #11-18\*  
 #16-18\*  
 BLOCK 14  
 #03-25\* TO #11-25\*  
 #16-25\*  
 #03-26 TO #04-26  
 #09-26 TO #16-26  
 \* MIRROR



PLEASE NOTE THAT THE ROOF COVERING FOR THE PRIVATE TERRACE OF THE LEVEL 2 UNITS CAN BE SEEN FROM THE LEVEL 3 UNITS. PLEASE REFER TO THE APPROVED PLANS FOR THE ROOF COVERING DESIGN. RELEVANT AUTHORITIES' APPROVAL WILL BE SOUGHT FOR WINDOW POSITION 2.

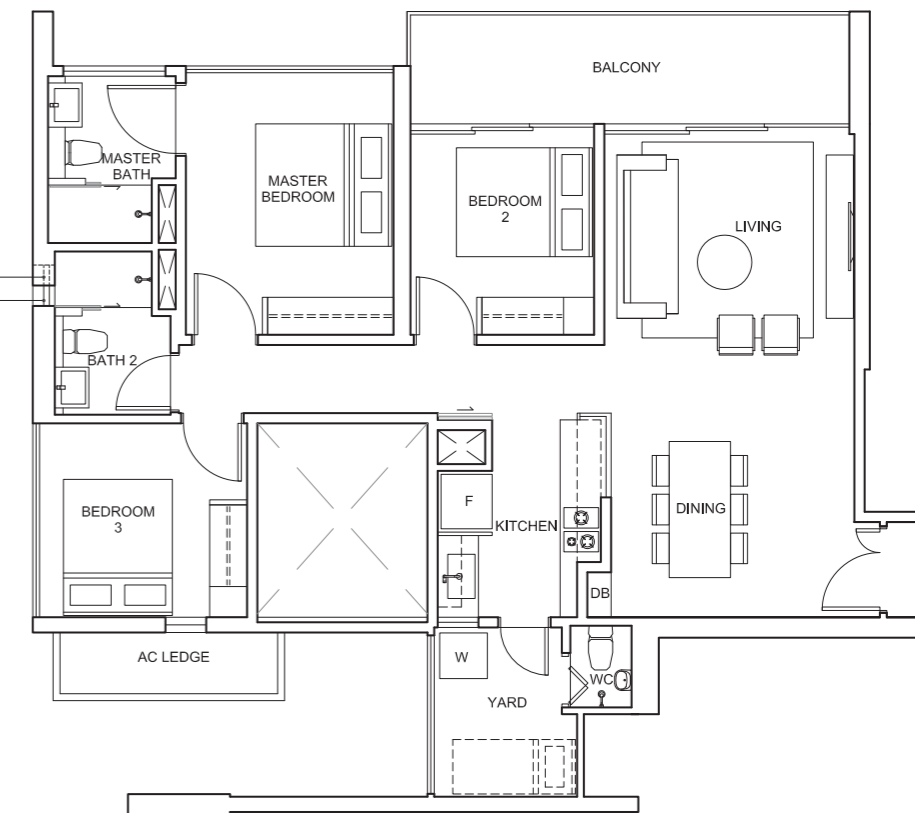
# 3-BEDROOM SUITE

**TYPE C2a**  
 107 sq.m. / 1152 sq.ft  
 BLOCK 8  
 #05-09\* TO #08-09\*  
 #12-08 TO #15-08  
 \* MIRROR



**TYPE C2**  
 107 sq.m. / 1152 sq.ft  
 BLOCK 8  
 #03-08 TO #11-08, #16-08  
 #03-09\* TO #04-09\*  
 #09-09\* TO #16-09\*  
 \* MIRROR

WINDOW POSITION 2 FOR UNITS AT 5TH, 6TH, 9TH, 10TH, 13TH & 14TH STOREY ONLY  
 WINDOW POSITION 1 FOR UNITS AT 3RD, 4TH, 7TH, 8TH, 11TH, 12TH, 15TH & 16TH STOREY ONLY

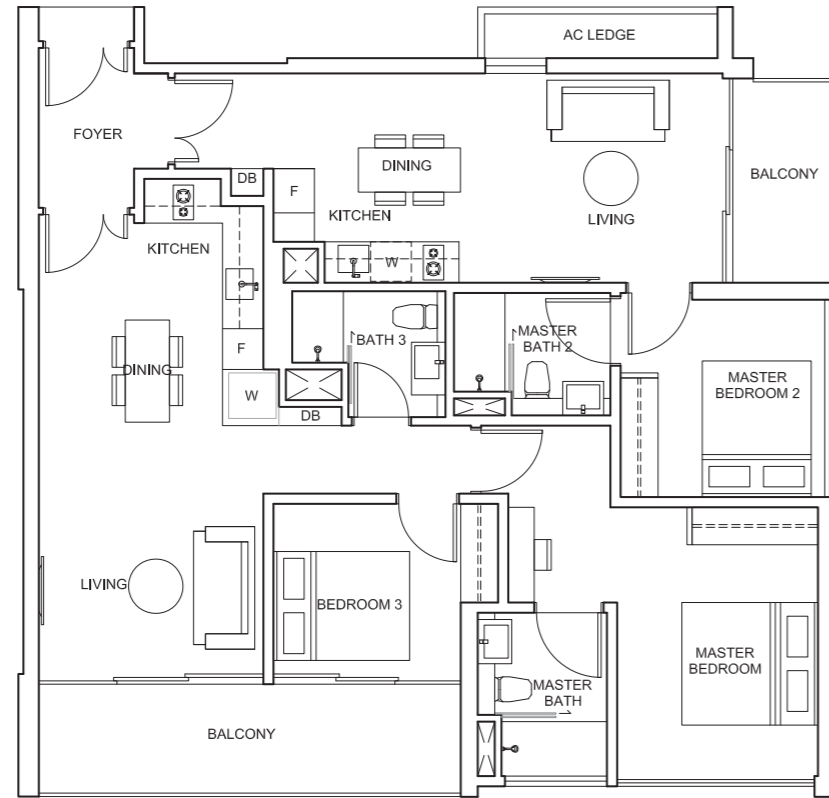


PLEASE NOTE THAT THE ROOF COVERING FOR THE PRIVATE TERRACE OF THE LEVEL 2 UNITS CAN BE SEEN FROM THE LEVEL 3 UNITS. PLEASE REFER TO THE APPROVED PLANS FOR THE ROOF COVERING DESIGN. RELEVANT AUTHORITIES' APPROVAL WILL BE SOUGHT FOR WINDOW POSITION 2.

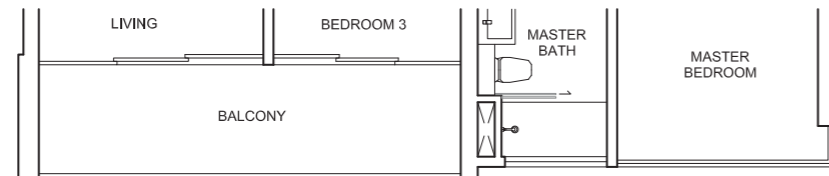
# 3-BEDROOM DUAL-KEY SUITE

# 4-BEDROOM SUITE

**TYPE CDK**  
 128 sq.m. / 1378 sq.ft  
 BLOCK 12  
 #03-19 TO #04-19  
 #09-19 TO #16-19



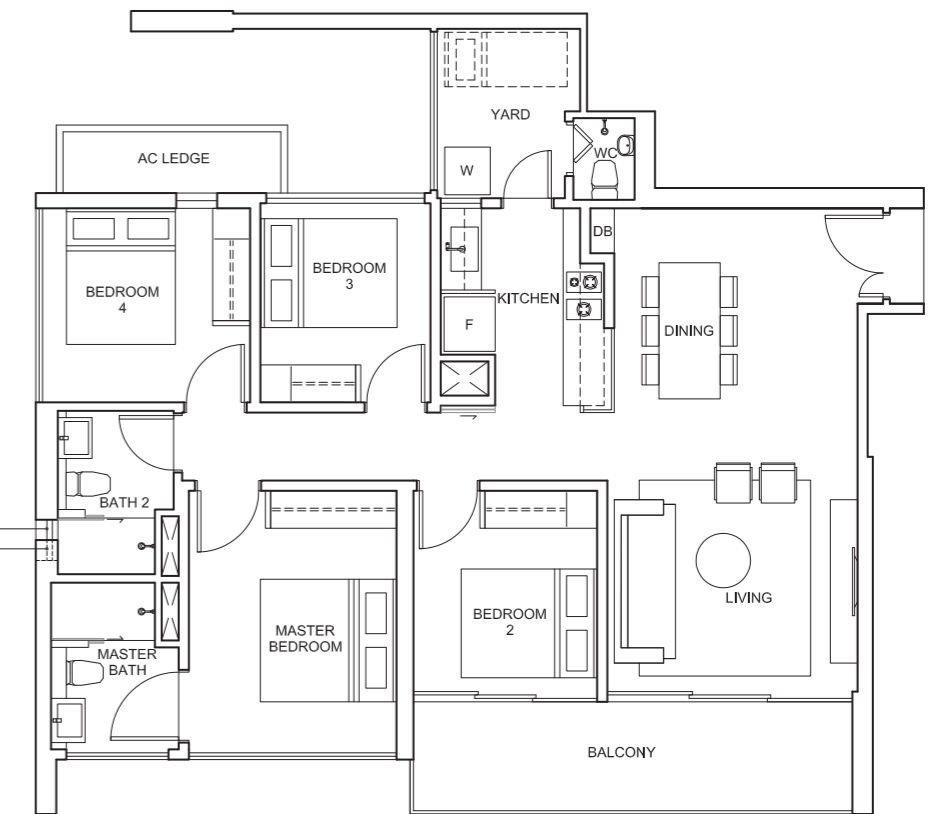
**TYPE CDKa**  
 128 sq.m. / 1378 sq.ft  
 BLOCK 12  
 #05-19 TO #08-19



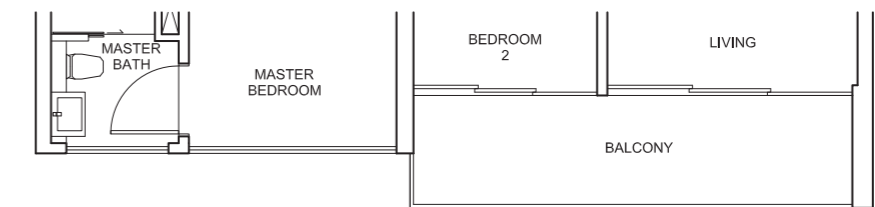
**TYPE D1**  
 115 sq.m. / 1238 sq.ft  
 BLOCK 6  
 #03-01\* TO #11-01\*  
 #16-01\*  
 #03-02 TO #04-02  
 #09-02 TO #16-02  
 \* MIRROR

WINDOW POSITION 1 FOR  
 UNITS AT 5TH, 6TH, 9TH, 10TH,  
 13TH & 14TH STOREY ONLY

WINDOW POSITION 2 FOR  
 UNITS AT 3RD, 4TH, 7TH, 8TH,  
 11TH, 12TH, 15TH & 16TH  
 STOREY ONLY



**TYPE D1a**  
 115 sq.m. / 1238 sq.ft  
 BLOCK 6  
 #05-02 TO #08-02  
 #12-01\* TO #15-01\*  
 \* MIRROR



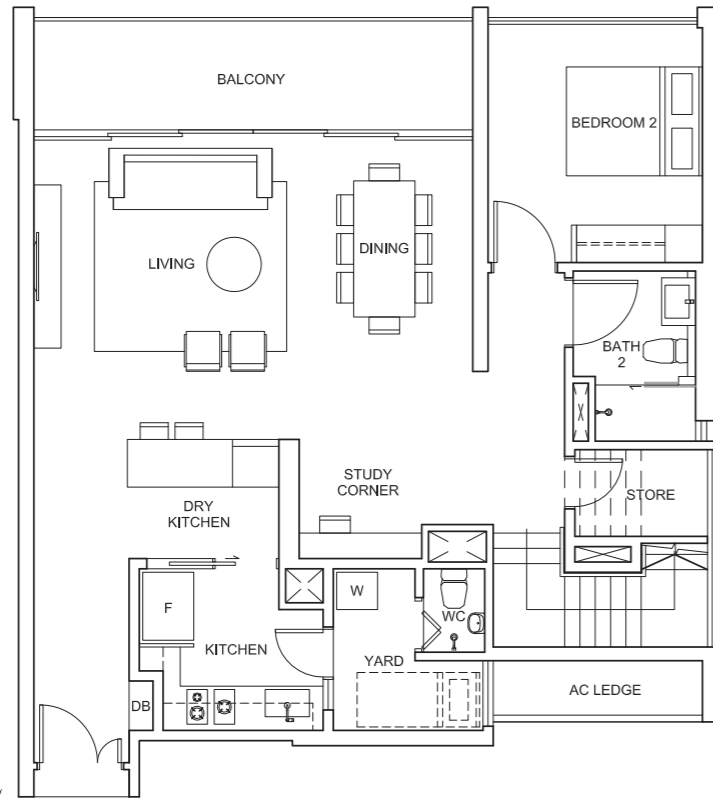
PLEASE NOTE THAT THE ROOF COVERING FOR THE PRIVATE TERRACE OF THE LEVEL 2 UNITS CAN BE SEEN FROM THE LEVEL 3 UNITS. PLEASE REFER TO THE APPROVED PLANS FOR THE ROOF COVERING DESIGN.



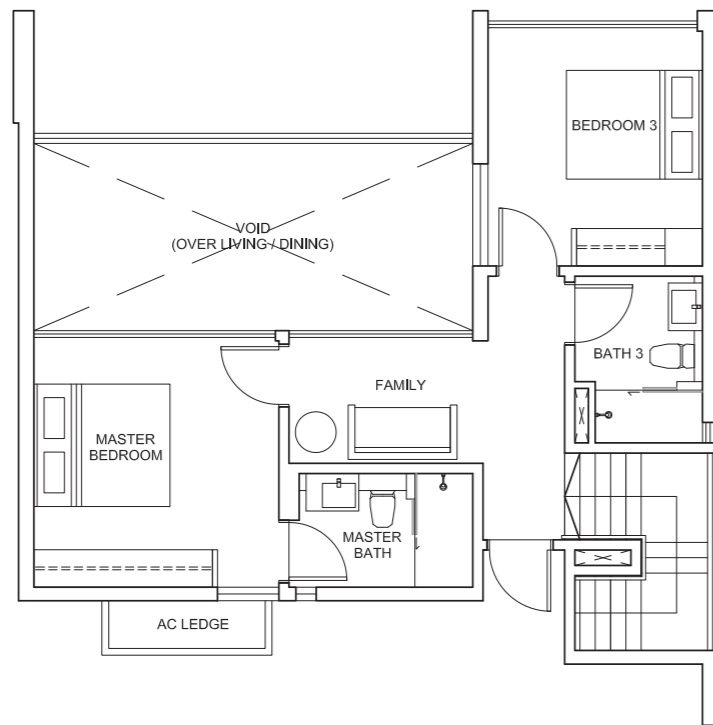
PLEASE NOTE THAT THE ROOF COVERING FOR THE PRIVATE TERRACE OF THE LEVEL 2 UNITS CAN BE SEEN FROM THE LEVEL 3 UNITS. PLEASE REFER TO THE APPROVED PLANS FOR THE ROOF COVERING DESIGN. RELEVANT AUTHORITIES' APPROVAL WILL BE SOUGHT FOR WINDOW POSITION 2.

# PENTHOUSE SUITE (3-BEDROOM+FAMILY+STUDY)

**TYPE PH1**  
181 sq.m. / 1948 sq.ft.  
(including 22 sq.m/237 sq.ft. void)  
BLOCK 12  
#17-18  
BLOCK 14  
#17-25, #17-26\*  
\* MIRROR



LOWER LEVEL

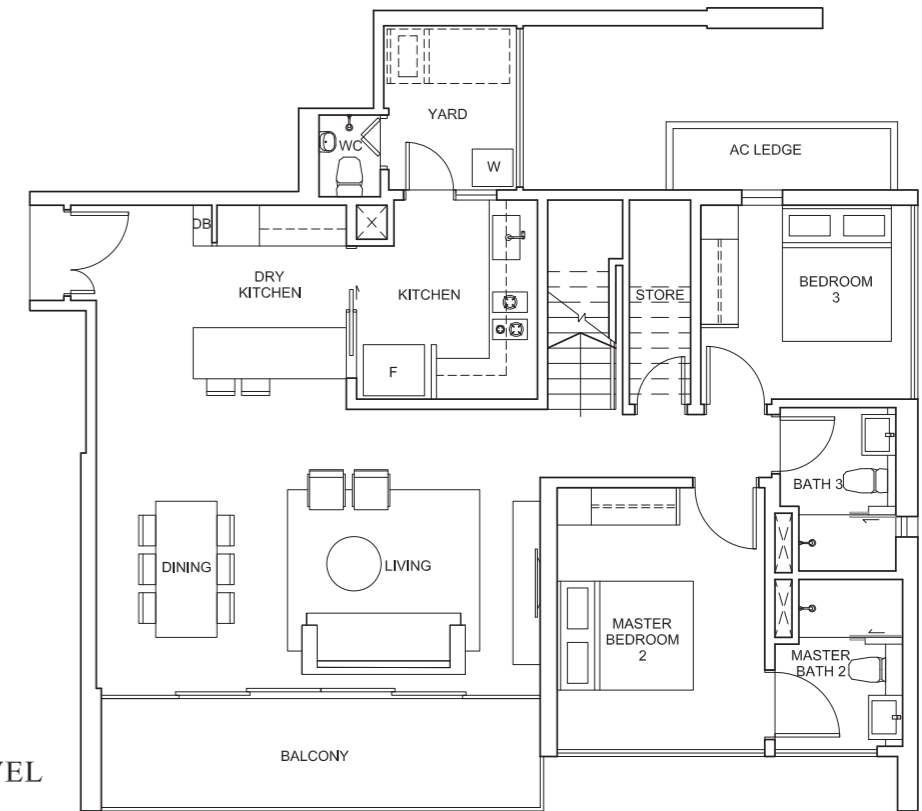


UPPER LEVEL

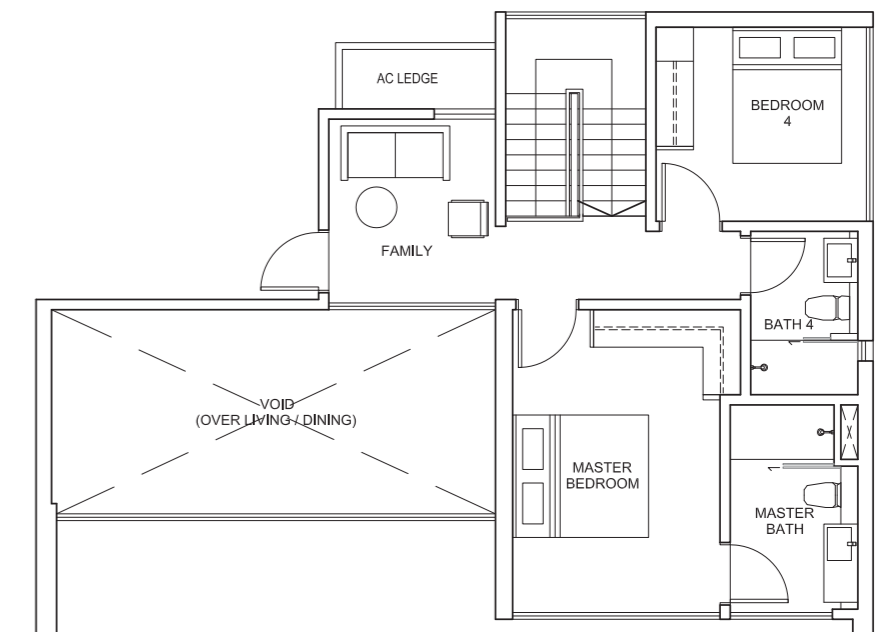


# PENTHOUSE SUITE (4-BEDROOM+FAMILY)

**TYPE PH3**  
193 sq.m. / 2077 sq.ft.  
(including 25 sq.m/269 sq.ft. void)  
BLOCK 6  
#17-01, #17-02\*  
BLOCK 8  
#17-08, #17-09\*  
\* MIRROR



LOWER LEVEL



UPPER LEVEL



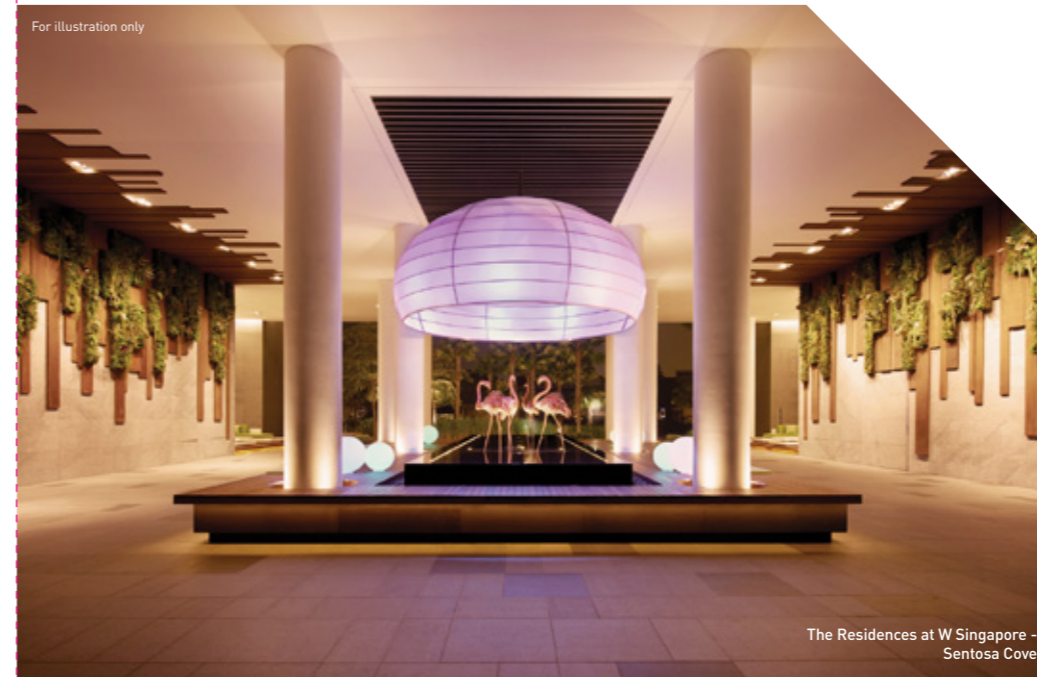


**CITY DEVELOPMENTS LIMITED**

# SINGAPORE'S TRUSTED PROPERTY PIONEER SINCE 1963

Established in 1963, City Developments Limited (CDL) is Singapore's leading property pioneer. It is a Singapore listed international property and hotel conglomerate involved in real estate development and investment, hotel ownership and management, facilities management, as well as hospitality solutions.

CDL's extensive global network spans over 350 subsidiaries and associated companies, five of which are listed on notable stock exchanges in New Zealand, Hong Kong, London and the Philippines. The Group owns and manages a portfolio of residential and investment properties, in addition to hotels, across Asia, Europe, Middle East, North America and New Zealand/Australia.



As one of Singapore's biggest landlords, CDL owns over 7.8 million square feet of floor/lettable area of office, industrial, retail, residential and hotel space here and abroad. Its impressive track record boasts of over 30,000 luxurious and quality homes catering to a wide range of market segments.

As a socially responsible corporation, CDL is fully committed to environmental sustainability. For over a decade, it has been championing the development of Green Building in Singapore through innovation, taking the lead in shaping Singapore's built environment.

CDL is the first Singapore corporation to be listed on three of the world's sustainability benchmarks: the FTSE4Good Index Series (since 2002), the Global 100 Most Sustainable Corporations in the World (since 2010) and the Dow Jones Sustainability Indexes (since 2011).

